

National Trust Cottages Accessibility Guide



Daron
Henfaes
Aberdaron
Pwllheli
Gwynedd
LL53 8BE

Ref 008027

Introduction

Daron is a first and second floor apartment

- Daron is one of the Henfaes holiday apartments situated in Henfaes house. .
- The apartment can accommodate seven people plus a cot.
- Central heating throughout.
- Rear garden shared with other Henfaes holiday apartments. Parking is available on the adjacent National Trust car park.

Pre-Arrival

- See the main webpage for booking and location details.
- Please contact us prior to booking if you have any specific access requirements.
- Directions provided with booking
- Bring torch if arriving in the dark as there are no streetlights here.

Approach

- The cottage is located in the centre of Aberdaron at the entrance to the large National Trust car park. Guests need to follow the information sent with the booking information with care.

Arrival & Parking Facilities

- Parking is in the previously mentioned National Trust car park. The key safe is in a black box outside the rear door to the right (as facing). It is operated by a push button mechanism. A torch is recommended especially if arriving in the dark as the numbers on the box can be difficult to see. The key is returned to the key safe on departure.

Getting in (and out) of the apartment

- There are five steps leading to the ground floor entrance the first of which measures 17.5cm in height with all others measuring 15.5cm.
- The ground floor entrance door has a clear opening width of 84.5cm.
- There is a steep flight of 14 stairs leading to the first floor landing.

The cottage is arranged as follows:

Ground Floor

- Access is at the very rear of Henfaes House.
- There is a steep flight of stairs leading to the first-floor landing.



-  Stairs leading to first floor.

First Floor:

- Bathroom with electric shower over bath, master bedroom with ensuite, lounge with adjoining kitchen/dining room.

Second Floor:

- A second split staircase leads to a landing and three upstairs bedrooms: a single, a double and a twin. It should be noted that the ceiling is low in places here.



Staircase to second floor

- **Getting around the apartment**

First floor:

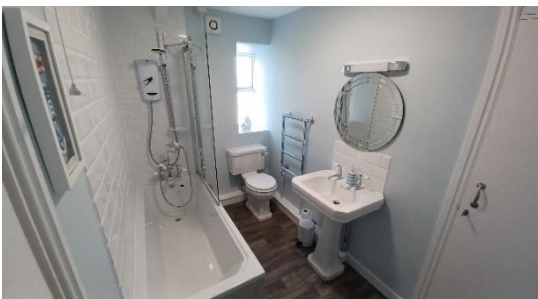
- Level access from first floor landing.
- Internal door widths on the ground floor are as follows; bathroom 76cm, double bedroom 73cm, ensuite door 73.5cm, lounge door 75.5cm and kitchen door 74cm.
- The first floor of the apartment is carpeted apart from the kitchen and bathrooms which are covered with lino.
- The staircase to the first floor is 77cm wide with the height of the risers being 20cm. □
Bannister rail to the left-hand side is 81cm.

Second floor:

- The split staircase to the second-floor landing is quite steep and each riser measures 22cm.
- Bannister rail is 81cm.
- The width of all internal doors on the second floor is as follows; twin 77cm, single 76cm and double 73.5cm...
- The second floor is carpeted.

First floor bathroom

- WC, basin and electric shower over bath – also shower off taps included.
- The WC is 46cm high.
- The basin is 86cm high.
- The bath is 56cm high – Internal: Length 150cm x 66cm wide.



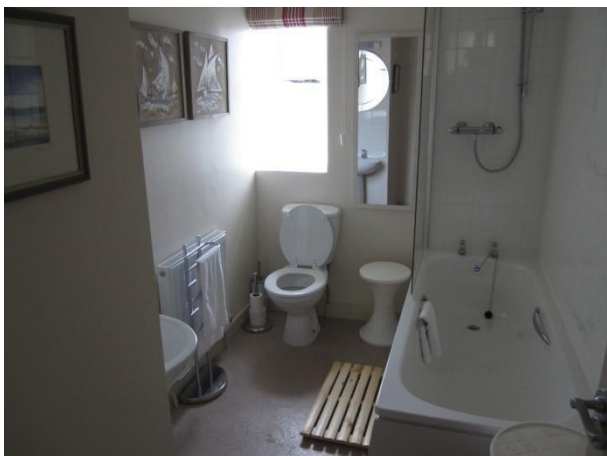
Master (double) bedroom

- On first floor.
- The bed is 64cm high x 147cm wide x 212cm long.
- Wooden sleigh type bed.
- Bedside table with lamp on each side.
- Chair with seat height of 41cm.



Ensuite

- WC, basin and electric shower over bath.
- The WC is 41cm high
- The basin is 78cm high
- The bath is 53.5cm high x 170cm x 68cm wide.



Sitting room/lounge

- Two three seater sofas with seat height of 38cm.
- One armchair with seat height of 38cm.
- Standard lamp, table lamp and main light.



Kitchen/dining room

- Height of worktop is 93cm.
- Electric cooker with ceramic top and fridge freezer.
- Fluorescent lighting.
- Electric toaster and kettle.
- Dining table with a height of 76cm and chairs with a seat height of 47cm.



Single bedroom

- On second floor.
- The bed is 59cm high x 91.5cm wide x 194cm long.
- Wooden bed.
- Main light.
- Bedside table with lamp.
- 1x Chair; Height of 48cm
- Small rug with non-slip backing to left and end of bed. #
- Restricted head height to due slope in doorway.



Twin bedroom

- On second floor.
- The beds are 59cm high x 901.5cm wide and 194cm long.
- Wooden beds.
- Bedside table with lamps.
- Chest of drawers.
- 1x chair; height of 48cm
- Small rug with non-slip backing between beds.
- Restricted head height to due slope in doorway.



Double bedroom

- On second floor.
- The bed is 70cm high x 164.5cm wide x 212cm long.
- Wooden sleigh type bed.
- Bedside tables with lamp on each side.
- Rug on either side of bed.
- 1x Chair; Height of 48cm
- Restricted head height to due slope in doorway.



Garden

- Enclosed informal gardens to the rear of the property with picnic bench.



Additional Information

- Assistance dogs are welcome at all our cottages.
- Pets other than assistance dogs cannot be accommodated here.
- In the event of a fire, it is the responsibility of the guests to evacuate the building themselves. Vibrating fire/smoke detectors are available if requested at time of booking. Please contact us if you have any other specific access requirements in this respect.

Facilities at all cottages

The National Trust aims to expand the list of accessible /equipment/items available at each cottage and these may include.

- Cordless kettle
- Hollow fibre bedding
- Chair with armrests
- Good reading light
- Large handle vegetable peeler
- Easy tin opener
- Non-slip mat for bath/shower
- Non-slip place mat
- Easy jar opener
- Information in alternative formats (on request)

Please note that we cannot guarantee that all items will be available at the time of your visit. Please enquire at the time of booking regarding any particular requests.

Specialist equipment

Other specialist equipment such as wheelchairs, bath seats, toilet frames etc may be available for loan or purchase from the local Red Cross loan centre. Please check this out before booking the Cottage and contact us if you require further information.

<http://www.redcross.org.uk/standard.asp?id=89425>

Future Plans to improve Accessibility to National Trust Holiday Cottages

- We are currently in the process of writing accessibility guides for all our holiday cottages and improving access over time for all our guests. All feedback is very helpful in informing us of ways in which we can improve access to all our cottages. We welcome any comments or ideas from you about access at this cottage and thank you for taking the time to do this. Please do this in the most convenient way for you. See contact details below or information on website.

About the Accessibility Guide

- This Accessibility Guide is intended to provide key information about the cottage that may be particularly relevant to guests with disabilities. Please contact us prior to booking if you would like information that is more specific and we will be happy to oblige.

Email: cottages@nationaltrust.org.uk Phone: 0344 8002070

Access for All at the National Trust

- The Access for All office works to improve access at all National Trust cottages and properties. The office welcomes comments and ideas on improving access.

Phone: 01793 818531

Email: accessforall@nationaltrust.org.uk

Date: May 2023