

National Trust Cottages Accessibility Guide

Deben View, Tranmer House, Sutton Hoo, Ref. 010037

Introduction

- A first-floor apartment within Tranmer House.
- Brick and timber built.
- The apartment is reached by an external staircase.
- Sleeps four in two bedrooms.



** Please note that all door widths given indicate the clearance required for access.*

The Apartment is Arranged as Follows

- Entrance door opens into a lobby and from there to an inner hallway. From the lobby, both bedrooms are accessed and from the lower inner hallway the kitchen. Two steps lead from lower to upper inner hallway from which are accessed the bathroom and living/dining room.

Pre-Arrival

- See the main webpage for booking and location details.
- Please contact us prior to booking if you have any specific access requirements.
- Directions provided with booking.
- Please bring a torch if arriving in the dark as there are no streetlights here.

Approach

- Tranmer House is accessed via a signposted and tarmacked road across the Sutton Hoo estate.
- There are two entrance barriers to drive up to the holiday apartments and the code for these will be emailed to you prior to arrival.
- There is a river bordering the estate.

Arrival & Parking Facilities

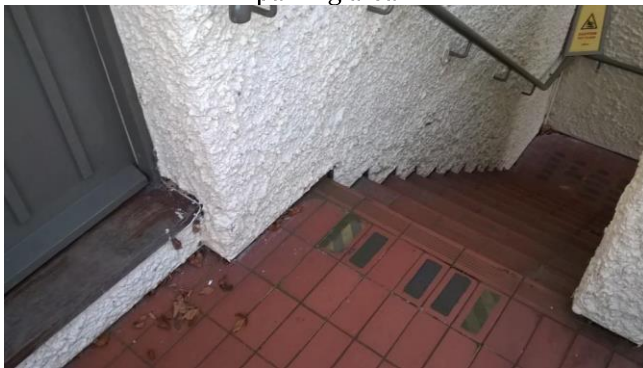
- There is a fenced gravel parking area by Tranmer House and Deben View is assigned one parking space. Additional parking is available in the main visitor car park.
- A gate 880mm wide leads from the gravel parking area, which has a concrete border, rising 40mm to cobbles, which gives way to a path.
- The uneven stone tile path leads through a gap in a further fence 920mm wide to the external stairs.
- The tiled exterior stairs are 170mm high and have anti-slip sections, a metal handrail and exterior lights. There are 5 steps up to a semi-landing, then a 90° turn left to 11 further steps up to a landing.
- The keysafe is on the external wall beside the main entrance door, 1.5m high, beneath a light and labelled with the apartment name.

- Rubber door mat.



parking area

Entrance to



Steps up to apartments
apartments

Top of steps to



car



Gate from parking area to path to base of external steps

Communal First-Floor Lobby

- From the exterior landing there is a door 850mm wide x 211mm high which gives access over a threshold 190mm high and then 60mm down into the lobby.
- Curved, tiled fireplace hearth 960mm high.
- Wooden bureau 1140mm high.
- Three key safes on the wall contain emergency spares beside a larger housekeeping master key safe.
- Two pendant lights on the ceiling.
- Wooden floor with one entrance mat.

- Fire alarm break panel wall mounted by the entrance door.
- Access to Deben View is signed on the door in the far right corner and an inner lobby precedes access to the apartment entrance door.

Internal Lobby

- From the communal lobby, the second door on right 820mm wide x 240mm high with a 25mm high threshold leading into an inner lobby.
- The apartment entrance door to Deben View is on the left and labelled – outward opening 860mm x 2030mm with high level glazed panels. 25mm high threshold.



Apartment internal lobby towards main entrance door and external lobby – showing two steps down & threshold inside.

Apartment Lobby

- Wooden floor with two steps to main level both 150mm high.
- AFF foam fire extinguisher at floor level and emergency lighting and smoke detector on ceiling.
- Door to both bedrooms and door to inner hallway.
- Wooden bureau 950mm high.

Inner Hallway

- Door to the inner hallway from lobby is 890mm x 2030mm with a 20mm high threshold and a further 50mm high lip.
- Wooden floor with two steps 100mm and 200mm high, leading to upper hallway through opening 720mm x 190mm.
- Pendant light, emergency light and two smoke detectors on ceiling.
- Door to cleaning cupboard 860mm x 2030mm.
- Additional storage cupboard with three doors and two shelves 840mm x 2050mm.
- Door to cupboard with high-chair 470mm x 2020mm. High-chair seat height 560mm, back 390mm, tray height 750mm and footrest 360mm.
- Door to kitchen.
- Emergency torch plugged in to power socket.
- Heating panel wall mounted beside emergency exit door.
- Fire alarm break panel.
- Emergency fire exit door 900mm x 2020mm with a threshold 30mm high.



Inner hall towards living/dining room
room



From upper hall towards lower hall

Kitchen

- Fire glazed door on automatic closer 780mm x 2030mm with 20mm high threshold.
- Tiled floor.
- Wall mounted fire blanket.
- Heat detector on ceiling.
- Range of floor and wall cabinets – counter height 600mm & cabinets 380mm above counter.
- Fridge/freezer, dishwasher, microwave, freestanding cooker, washer/dryer, portable CD player with radio, kettle and toaster.
- Tables and six chairs – table 760mm high with knee-space of 680mm. Chair seat height 430mm and backs 460mm.
- Steps to veranda – 1st step 80mm and 2nd step 150mm high.
- Secondary glazed window facing South over the estate.



Kitchen with glazed door to veranda



Double bedroom



Super-king bedroom with glazed door & step to veranda



Marble bathroom

Double Bedroom

- Door 890mm x 233mm with a threshold 20mm high.
- 4' bed 580mm high (without headboard) with 190mm space underneath.
- Two bedside cupboards 720mm high, each with a lamp.

- Chest of drawers with freestanding mirror 1040mm high.
- Wooden chair with upholstered seat 460mm back 480mm.
- Two pendant lights and smoke detector on ceiling.
- Secondary glazed window facing West over the estate.
- Wooden floorboards with two small bedside mats.

Super King/Twin Bedroom

- Door 890mm wide x 230mm high with threshold 10mm high, then further 215mm high step up.
- Super king-size/twin bed(s) 90mm wide each x 580mm high (without headboard) with 190mm clear space underneath.
- Chest of drawers with freestanding mirror 890mm high.
- Upholstered chair 460mm seat height x 350mm back height.
- Two bedside tables 730mm & 760mm high, one with two drawers and both with lamps.
- Wooden freestanding wardrobe – three drawers at low level, three pull out drawers and hanging height 1850 mm from floor.
- In-built cupboard 900mm wide with 1700mm hanging height.
- Travel cot in cupboard.
- Pendant lights & smoke detector on ceiling.
- Secondary glazed window facing North over the estate towards the burial mounds.
- Steps to veranda 100mm and 150mm high.
- Wooden floorboards with two small bedside mats.

Bathroom

- Door 790mm x 204mm with a threshold 30mm high.
- Bath with shower attachment 570mm high x 440mm width at bottom x length 125mm at bottom.
- Basin with crosshead taps 830mm high.
- Toilet seat 440mm high.
- Wooden chair seat height 440mm x seat back 400mm high.
- Marble-topped sink cabinet 790mm high.
- Shelf 1250mm high with mirror above.
- Heated towel rail with top bar 900mm high.
- Three-armed pendant light on ceiling and wall mounted light with cord above mirror.
- Wall mounted extractor fan.
- Secondary glazed window facing South over the estate towards the burial mounds.
- Tiled floor.

Living Room



- Door 770mm x 204mm with a threshold 10mm high, then 20mm down.

- Two two-seater fabric sofas – 1800mm wide x seat height 450mm x seat back height 800mm.
- Fireplace – no longer in use. Marble hearth and surround 10mm high with wooden mantelpiece 2120mm wide x 1640mm high.
- Side table with three drawers bearing television 780mm high.
- Oak side table 700mm high.
- Round oak side table with lamp and telephone 700mm high.
- One extendable wooden side table 770mm high.
- Wooden dresser with glass paneled doors 2440mm high.
- Footstool 350mm high.
- Five double wall lights.
- Two secondary glazed windows facing South and West across the estate towards the woods and the River Deben.
- One secondary glazed French door to veranda – sealed shut.
- Wooden floorboards and one large Persian style rug.
- Wooden dining table 710mm high with 240mm seat space underneath to chair seat. Four wooden upholstered chairs 460mm seat height x 830mm seat back height.
- Smoke detector on ceiling.

Outside

- Bin store across the paved courtyard from the base of the external stairs.

Additional Information

- Assistance dogs are welcome at all our holiday cottages.
- In the event of a fire, it is the responsibility of the guests to evacuate themselves. Vibrating fire/smoke detectors are available if requested at time of booking. Please contact us if you have any other specific access requirements in this respect.

Facilities at All Holiday Cottages

The National Trust aims to expand the list of accessible /equipment/items available at each cottage and these may include:

- Cordless kettle
- Hollow fibre bedding
- Chair with armrests
- Good reading light
- Large handle vegetable peeler
- Easy tin opener
- Non-slip mat for bath/shower
- Non-slip place mats
- Easy jar opener
- Information in alternative formats (on request)

Please note that we cannot guarantee that all items will be available at the time of your visit. Please enquire at the time of booking regarding any particular requests.

Specialist Equipment

Other specialist equipment such as wheelchairs, bath seats and toilet frames etc... may be available for loan or purchase from the local Red Cross loan centre. Please check this out before booking the cottage and contact us if you require further information.
<http://www.redcross.org.uk/standard.asp?id=89425>

About this Accessibility Guide

This Accessibility Guide is intended to provide key information about the cottage that may be particularly relevant to guests with disabilities. Please contact us prior to booking if you would like information that is more specific and we will be happy to oblige.

Email: cottages@nationaltrust.org.uk

Phone: 0344 8002070

Access for All at the National Trust

The Access for All office works to improve access at all National Trust accommodation and properties. The office welcomes comments and ideas on improving access.

Phone: 01793 818531

Email: accessforall@nationaltrust.org.uk

August 2022

