



National Trust Cottages Accessibility Guide

Doyden Castle

Doyden

Port Quin

Nr Port Isaac

Cornwall



Cottage Ref: 011101

Introduction

- Doyden Castle is a little fortress on the edge of the cliffs. Breathtaking views across the ocean from the ground and first floor make this an unrivalled paradise.
- Children under 12 are not able to stay here due to the proximity of the cliff edge.
- Access to vehicles is limited to unloading and loading.
- The cottage is heated by electric eco-radiators, night storage heaters and portable oil filled radiators. There is a wood burning stove in the sitting room and an electric towel rail in the shower room.
- There is a telephone in the main hallway of Doyden House for emergency calls, a little under a mile away. Please note there is no mobile telephone signal.

The accommodation on three floors comprises the following:

Cellar Floor

- Tunnel entrance to front door which opens into the kitchen/diner. Off here is open slate shelved storeroom and a utility room.
- The shower room is also accessed directly off the kitchen.
- A door leads to stairs to the ground floor and steps down to the WC. This door should always be closed at night as it is a fire door.

Ground Floor

- The ground floor has a small landing area.
- Off here is an outside door to the terrace, door into sitting room and stairs to first floor.

First Floor

- Double bedroom which is immediately off the stairs.

Pre-Arrival

- See the main webpage for booking and location details.
- Please contact us prior to booking if you have any specific access requirements.
- Directions provided with booking.

Approach

- Doyden House is approached via a drive of one mile along country lanes. The entrance gates to Doyden House are held open. A short drive along a track sweeps into a large, level car parking area with several non-designated spaces.



Doyden House Entrance



Track to Doyden House. Castle is in the distance

Arrival & Parking Facilities

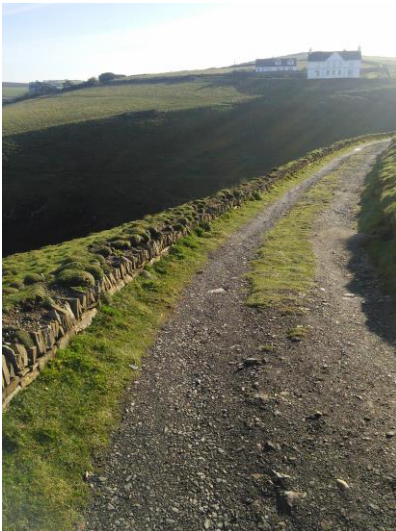
- The level, gravelled car parking area offers ample parking. Please Park here whilst staying in the cottage but to unload and load, you may drive to the Castle.
- Take the track past Stable Cottage (approximately 30 metres) to open a five-bar gate and remember to close it after you. There are often ponies grazing on the headland who will take the opportunity to stray if the gate is left open.



- Drive slowly along the rough track over the cliff top and follow the walled track to the cottage. Here the track is very narrow and quite rough in places.



- Park just before the entrance to the cottage to unload.
- The track to the cottage is sloping and the ground is very uneven.



Part of the track looking back towards Doyden House.



View looking away from a corner of the track



Last corner of track to Doyden Castle.

Getting in (and out) of the cottage

- There is a sensor light at the entrance to the tunnel and above the front door.
- A wide, tunnel entrance leads to the front door.
- The clear opening width of the main entrance door is 800mm.
- The key safe is inside the cupboard in the tunnel on the left-hand side. It is operated by a combination lock mechanism, where the dials need to be turned to the cottage combination code. A torch is recommended, especially if arriving in the dark, as the numbers on the lock can be difficult to see.
- The front door is at a height of 1500mm.



Getting around the cottage

- Several, uneven, flagstone internal steps with a steep, slate staircase with steps of varying heights maximum being 280mm and widths.
- Iron handrail on first stairs with a maximum height of 900mm from stair treads. There are 7 treads on the first stairs and there are 11 treads on the second stairs but no handrail to the bedroom.
- The treads on the first staircase have a minimum height of 230mm and a maximum height of 280mm. The treads on the second staircase have a minimum height of 190mm and a maximum height of 250mm.
- Range of floor coverings from stone, wood, rugs, and carpet.
- There is no window in the shower room.
- There is a window in the kitchen with a wall in front of it which reduces the natural light levels. Ceiling lighting and under counter lights illuminate this room.
- There is a deep step down to shower room.
- Three steps up from kitchen to first set of stairs.
- Three steps down to the lavatory.
- Flagstones on lower floors are uneven in height and width.
- The clear opening widths of the internal doors range from 570mm to 670mm.

Cellar floor - shower room

- Main light switch is on the cupboard outside the shower room to the left at a height of 1380mm.
- There is no natural light, but good illumination level is provided from 4 recessed LED spotlights.
- There is a step down to shower room which is 230mm deep.
- Restricted head room into shower room of 1620mm.
- The clear opening width of door to shower room is 630mm.
- The hand basin is 790mm high.
- Large shower cubicle.
- The shower is electric, and the controls are at a height of 1500mm.
- The height of the ceiling is 1900mm.
- There is a mirror with shaver socket and light above the hand basin.



Step into shower room from door



View of step from shower cubicle.



Cellar floor – kitchen

- Front door opens from tunnel into kitchen.
- Main light switch is to the left of the front door at a height of 1350mm.
- Three ceiling lights, under counter lighting and hob lighting.
- Height of worktop is 920mm from floor level.
- Integrated electric single oven with ceramic hob. Extraction canopy with light.
- Integrated microwave with controls at a height of 1100mm.
- Free standing fridge-freezer and integrated slimline dishwasher.
- Cordless kettle, toaster.
- Ceramic sink with lever taps.
- Dining table with clear knee clearance of 590mm and two wooden seated chairs with a seat height of 450mm and a back height of 440mm.





Cellar floor - utility room

- Directly off kitchen.
- Main light switch is on the wall of the utility at a height of 1540mm.
- Lighting is LED spotlights.
- Work top height is 920mm.
- Washing machine, tumble dryer, broom cupboard.
- Restricted head height of 1700mm.
- Width of entrance into Utility is 620mm.



Utility room



Slate shelved storeroom

WC

- The WC is on the cellar floor.
- There are two flights of stairs from the bedroom to the WC.
- There are also steps 3 steps up and 3 steps down from the kitchen.
- These steps vary in height from 110mm to 240mm down to the WC and from 200mm to 240mm up from the kitchen.

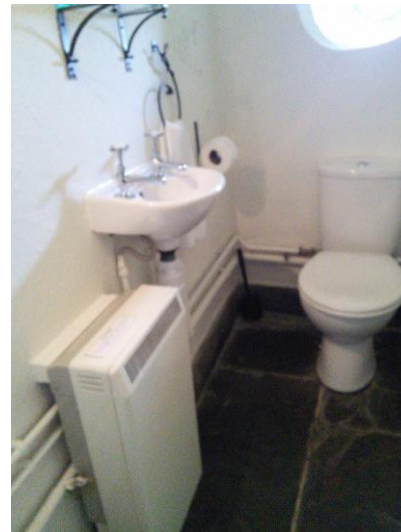
- Restricted head height from bottom 3 stairs to WC of 1200-1400mm.
- Main light switch is on the left of the WC door at a height of 1350mm.
- Lighting is one wall light.
- There is small porthole window.
- The height of the WC is 450mm.
- Small hand basin with twist taps at a height of 890mm.



Steps up from kitchen



Steps down to WC



External door to terrace – ground floor landing.



Looking down first staircase.

Sitting room

- Off ground floor landing.
- Main light switch is on the right of sitting room door at a height of 1370mm.
- The lighting is a three shaded centre light, one table lamp and a floor lamp.
- Large two-seater sofa 1705mm wide with a seat height of 490mm and back height of 500mm.
- Leather armchair 790mm wide with a seat height of 460mm and back height of 700mm.

National Trust

- Small circular Dining table with a knee clearance of 730mm.
- Two carver chairs with a seat height of 420mm and a back height of 400mm.
- 41" TV with separate DVD player.
- Natural lighting from the leaded light windows with sea views.



Stairs to Double bedroom



Stairs to bedroom



Looking downstairs from bedroom

Double bedroom

- Directly off stairs.
- Main light switch is right of bedroom door at a height of 1360mm.
- Central light with 4 shades.
- 6'/1900mm double divan bed, 1960mm long and 680mm high, with drawers under for storage of woollens.
- There is no clearance below the bed to the floor.
- Dressing table with large mirror. The tabletop is 750mm from the floor and has knee clearance of 610mm. Stool with a seat height of 480mm
- Two bedside cabinets with bedside lamps.
- Chair with seat height of 400mm and a back height of 520mm.
- Hanging clothes rail, hooks at a height of 620mm.
- Large wall mirror.
- Three windows with sea views.





Garden

- Level access immediately surrounding the cottage's ground floor where views can be enjoyed but a steep, uneven, climb across rough ground is necessary to reach this terrace.
- The terrace can also be accessed directly from the first floor through the door behind the curtain next to the sitting room.
- There is a small foldaway table and two chairs stored in
- The chairs have a seat height of 450mm and a back height of 410mm.
- The table is 700mm high.
- The outside furniture is stored in the cupboard in the sitting room.
- There is an unfenced drop above the tunnelled area and extreme care is needed.



Additional Information

- Assistance dogs are welcome at all our cottages.
- In the event of a fire, it is the responsibility of the guests to evacuate themselves. Vibrating
- Fire/smoke detectors are available if requested at time of booking. Please contact us if you have any other specific access requirements in this respect.
- Carpets are 80/20 wool/manufactured fibres.
- Duvets and pillows are made of hollowfibre.
- Cushions are hollowfibre.

Facilities at all cottages

In addition to the standard equipment and facilities, each cottage is equipped with the following:

- Chair with armrests in dining/sitting room.
- Good reading light.
- Non-slip mat for bath/shower.
- Information in alternative formats (on request).

We aim to provide these items in all cottages but please check when booking as to their availability and to check if new items have been added to the list.

In Doyden Castle, please pre-request a large handle vegetable peeler and an easy jar opener.

Specialist equipment

Other specialist equipment such as wheelchairs, bath seats, toilet frames etc may be available for loan or purchase from the local Red Cross loan centre. Please check this out before booking the Cottage and contact us if you require further information.

<https://www.redcross.org.uk/get-help/borrow-a-wheelchair>

<https://www.redcross.org.uk/get-help/hire-a-toilet-aid>

Future Plans to improve Access to National Trust Holiday Cottages

- We are currently in the process of writing accessibility guides for all our holiday cottages and improving access over time for all our guests. All feedback is very helpful in informing us of ways in which we can improve access to all our cottages. We welcome any comments or ideas from you about access at this cottage and thank you for taking the time to do this. Please do this in the most convenient way for you. See contact details below or information on website.

About the Accessibility Guide

- This Accessibility Guide is intended to provide key information about the cottage that may be particularly relevant to guests with disabilities. Please contact us prior to booking if you would like information that is more specific, and we will be happy to oblige.
Email: holiday.enquiries@nationaltrust.org.uk.
Phone: 0344 800 2070

Access for All at the National Trust

- The Access for All office works to improve access at all National Trust cottages and properties. The office welcomes comments and ideas on improving access.
Phone: 01793 818531
Email: accessforall@nationaltrust.org.uk

October 2022