

National Trust

National Trust Cottages Accessibility Guide

Ferris's Cottage
Trelissick
Feock
Truro
Cornwall
TR3 6QL

Ref: 011072



Introduction

Ferris's Cottage is a traditional, detached, whitewashed property on the edge of the Trelissick Estate.

It is arranged with a living room, dining room and kitchen on the ground floor and two bedrooms, sleeping 4 guests and a bathroom on the first floor.

Pre-Arrival

- See the main webpage for booking and location details.
- Please contact us prior to booking if you have any specific access requirements.
- Directions are provided with booking.

Approach

Ferris's Cottage is positioned on the side of the road as you drive down the hill having passed Trelissick or up the hill from the King Harry Ferry. This can be a fairly busy road during peak holiday seasons as it is the main route to the King Harry Ferry which is a popular tourist crossing to and from the Roseland Peninsular.



Arrival & Parking Facilities

- The car parking for the cottage is located just after Trellissick's Carcaddon bridge which goes over the road after passing the main entrance to the National Trust Trellissick Estate. Parking for one car is on a short, upwards track.



Getting in (and out) of the cottage

- From the parking area there is a pathway, 30 metres long, down to a stone stairway which drops down to join the path across the cottage front garden. There are solar powered lights which light the path down to the front of the cottage. There are 8 steps (75cm wide x 20cm high) with a wooden banister (90cm high).



National Trust



- The combination key safe for the 'rear' entrance door (used as the main entrance) is on the wall to the right of the far door.
- There is an outside light but we do recommend bringing a torch to set the correct lock code on arrival. Keys to be returned to safe on final departure.



Getting around the cottage

Ground Floor

- Front door opens into lounge with solid, wooden door off to dining room.
- Door off dining room to kitchen and stairway up to first floor.
- 'Rear' door opens directly into the kitchen.

First Floor

- Stairway up from dining room to first floor landing. Three solid, wooden doors off landing.
- One door to bathroom. Other doors to twin and double bedrooms.

Sitting Room – single aspect



- From outside the cottage there are three granite steps (10cm high) up to solid wooden front door, lip 100mm
- Front door 84cm wide opens inwards into lounge.
- Wood effect laminate flooring
- Two pairs of wall lights. One table lamp.
- Wall mounted Rointe electric heater, Wood burning stove in fireplace
- Window, to front aspect, with deep sill, height 66cm and depth 43cm
- Large, 2 seater sofa seat height 50cm, seat width 157cm
- Large, wing back chair, seat height 46cm
- Small armchair, seat height 37cm
- Sideboard
- Round side table, height 63cm and diameter 46cm
- Round coffee table, height 70cm and diameter 60cm
- 32" Panasonic TV, freesat box and DVD player on wooden stand
- Smoke detector
- Carbon monoxide detector
- Built in cupboard housing books and DVDs



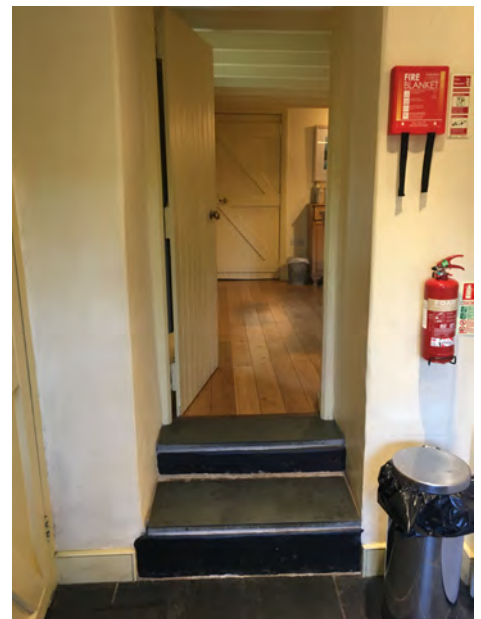
Dining room

- Wood effect laminate flooring
- 70cm wide door opens inwards from lounge
- One wall mounted Rointe electric heater
- Ceiling light, two adjustable spotlights on 2-way switch
- Window, to front aspect with seat below (seat 50cm height)
- Pine cupboard (88cm wide x 44cm deep x 91cm high)
- Pine dining table (120cm long x 90cm wide, knee height is 57cm)
- Four pine chairs (seat height 46cm)
- Radio / CD player
- Multi-sensor alarm

- Door to kitchen and stairway to first floor



Kitchen – Dual aspect



- Solid wooden door 67cm wide opens downwards into dining room.
- Two steps 23cm and 16cm down to kitchen.
- Slate tiled flooring
- Under-counter heater
- Seven recessed down-lights

National Trust

- Smoke detector
- Window, to rear aspect (45cm wide x 80cm high)
- Window, to east aspect (120cm wide x 80cm high)
- Deep, stainless-steel sink. Mixer tap with lever controls
- Range of built in cupboards, and drawers.
- Worktop 90 cm high
- Integrated fridge/freezer, washer/drier and dishwasher
- Cooker and hob with extractor fan over
- Eye-level, built-in microwave
- Toaster and cordless kettle.

Stairway to first floor



- Straight run stairway, with banister (80cm high), from dining room to first floor landing.
- Fitted carpet
- Ten steps (70cm wide x 20cm high) to landing
- Window, with deep sill to rear aspect
- Ceiling light on two way switch
- Stairgate width 66cm

First Floor Landing

- Fitted carpet flooring
- Three, solid wooden doors off – one to bathroom and others leading to twin and double bedrooms
- NuAire positive input ventilation system installed on ceiling

Bathroom – single aspect

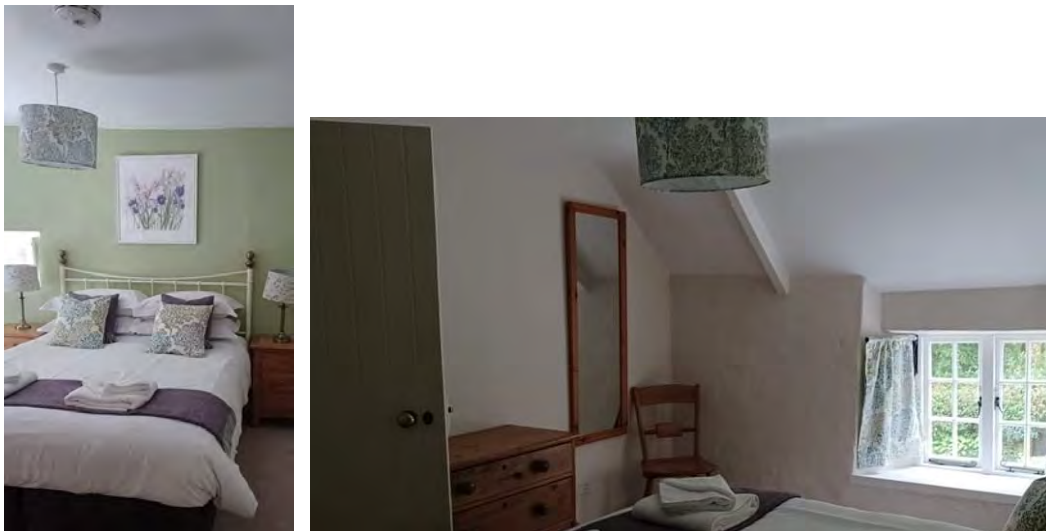
- Solid wooden door 65cm wide opens inwards from landing
- Wood effect vinyl flooring

National Trust

- Ceiling light and light/shaving socket above mirror
- Wall mounted Rointe electric heater
- Heated towel rail
- Window with deep sill
- Cork topped wooden bathroom stool (36cm wide x 30cm deep x 42cm high)
- W.C. (seat height 42cm)
- Wash basin (height 86cm)
- P-shaped bath: 60cm wide at the narrowest point, 70cm at widest point x 150cm long x 57cm high)
- Electric eco-shower over bath with safety glass screen



Double Bedroom – Dual Aspect



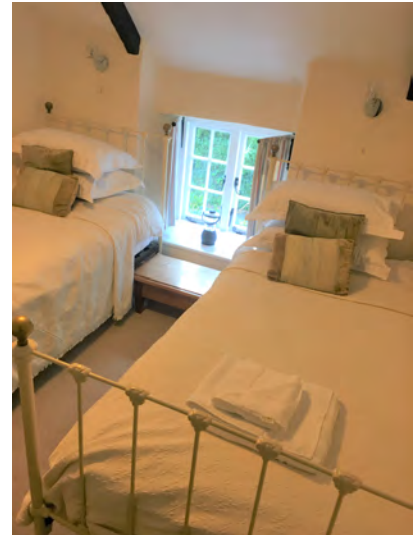
- Solid wooden door 67cm wide opens inwards from landing.
- Fitted carpet flooring
- Ceiling light, pair of table lamps
- Wall mounted Rointe electric heater
- Window with deep sill to front aspect
- Chest of 3 drawers (85cm wide x 45cm deep x 80cm high)

National Trust

- Pair of bedside cabinets (47cm wide x 36cm deep x 63cm high)
- Wooden chair (46cm seat height)
- Built-in wardrobe with hanging rail (rail height 146cm)
- King size bed (160cm wide x 200cm long x 65cm high)
- Multi-sensor alarm
- Full length, wall mounted mirror

Twin Bedroom – Single Aspect

- Solid wooden door 64cm wide opens inwards from landing.
- Fitted carpet flooring
- Ceiling light, pair of wall lights fitted over bedheads
- Wall mounted Rointe electric heater
- Window with deep sill to front aspect
- Pine chest of drawers (74cm wide x 44cm deep x 74cm high)
- Build in wardrobe with hanging rail (height 124cm)
- Pair of contemporary single iron bedsteads (each 100cm wide x 200cm long x 65cm high)



Garden



- The garden is at the front of the cottage and is mainly lawn with flower borders, shrubs, trees and garden furniture. There is a small area to the east side which houses the log store, a small washing line and an outside table (diameter 80cm) and four chairs (seat height 45cm). There is a storage box housing seat pads which is 104cm wide x 60cm deep x 68cm high
- There is also a picnic table on front lawn with seat height of 46cm and knee clearance of 74cm



- There are five stone steps (18cm high) through a metal gate (120cm wide) down to the road. These steps have a metal banister which is 75cm high. Departure by this route should be avoided as it takes guests directly on to the road.

Additional Information

- Assistance dogs are welcome at all of our cottages.
- In the event of a fire, it is the responsibility of the guests to evacuate themselves. Vibrating fire / smoke alarms are available if requested at time of booking. Please contact us if you have any other specific access requirements in this respect.

Facilities at all cottages

The National Trust aims to expand the list of accessible /equipment/items available at each cottage and these may include

- Cordless kettle
- Hollowfibre bedding
- Chair with armrests
- Good reading light
- Large handle vegetable peeler
- Easy tin opener
- Non-slip mat for bath/shower
- Non-slip place mat
- Easy jar opener
- Information in alternative formats (on request)

Please note that we cannot guarantee that all items will be available at the time of your visit. Please enquire at the time of booking regarding any particular requests.

Specialist equipment

Other specialist equipment such as wheelchairs, bath seats, toilet frames etc may be available for loan or purchase from the local Red Cross loan centre. Please check this out before booking the Cottage and contact us if you require further information.

<https://www.redcross.org.uk/get-help/borrow-a-wheelchair>

<https://www.redcross.org.uk/get-help/hire-a-toilet-aid>

Future Plans to improve Access to National Trust Holiday Accommodation

- We are currently in the process of writing accessibility guides for all our holiday cottages and bunkhouses and improving access over time for all our guests. All feedback is very helpful in informing us of ways in which we can improve access. We welcome any comments or ideas from you about access at this cottage and thank you for taking the time to do this. Please do this in the most convenient way for you. See contact details below or information on website.



About the Accessibility Guide

- This Accessibility Guide is intended to provide key information about the accommodation that may be particularly relevant to guests with disabilities. Please contact us prior to booking if you would like information that is more specific and we will be happy to oblige.
Email: holiday.enquiries@nationaltrust.org.uk Phone: 0344 8002070

Access for All at the National Trust

- The Access for All office works to improve access at all National Trust accommodation and properties. The office welcomes comments and ideas on improving access.
Phone: 01793 818531
Email: accessforall@nationaltrust.org.uk

August 2023