

Accessibility Guide

Forge Barn
Berwick Home Farm
Upton Magna
Shropshire
SY4 4TU



Introduction

Berwick New House barns form part of the farm complex at Berwick New House on the Attingham Park estate. The barns were built between the late 1700s and the late 1800s. Forge Barn is on the far left side of the complex, as shown in the picture above and is now a comfortable countryside retreat for four people.

Forge Barn is all on ground level, with the hallway leading to a double-height open-plan kitchen, dining and sitting room area with floor-to-ceiling windows and a woodburning stove.

There is a wet room with shower, and two bedrooms, one with a king-size bed and one with two singles.

Forge Barn has dining patio. The five barns share an enclosed garden, with a lawn and a firepit ready for barbecues. Outside the barns you will also find electric vehicle charging points, a bicycle store and a dog shower.

The cottage is arranged as follows.

Ground Floor:

All the accommodation is on one level. To the right of the front door is an open-plan kitchen, dining and sitting room area. In front of the front door is the double bedroom. To left of front door, the hallway leads to a wet room and twin bedroom.

Pre-Arrival

- See the main webpage for [Forge Barn](https://www.nationaltrust.org.uk/holidays/forge-barn-shropshire) (<https://www.nationaltrust.org.uk/holidays/forge-barn-shropshire>) for booking and location details.
- To enable our housekeepers to prepare the cottage for any particular accessibility requirements you might have, please contact guestrelations@nationaltrust.org.uk.
- Directions are provided electronically three weeks prior to travel. If you need a printed version of any of our holiday documents, please contact guestrelations@nationaltrust.org.uk.
- If, having read this accessibility guide, you still require further information, e.g. a social storybook guide, please contact guestrelations@nationaltrust.org.uk

Arrival & Parking Facilities

- Access is via a single track with passing places.
- The turning is signposted Berwick New Barn.
- Please drive slowly along the driveway.
- There are two spacious parking spaces for Forge Barn directly next to the entrance to the cottage in the concrete parking area which is shared with the other four barns. There are shared electric vehicle charging points which are not specific to each cottage.
- If you park in the closest Forge Barn parking space, access to the property from your vehicle to the entrance door is approximately 3.5m (depending of choice of parking space) via a concrete slopped pathway. The ramp height is 11cm, the length is 200cm and the gradient is 1:18. At the top of the ramp, there is a level platform of 10cm. The ramp is bordered by a wooden hand rail.
- The ramp to the cottage is concrete. The path from the parking area to the rear of the cottage is compacted gravel leading to a grassed area. The outdoor seating area is compacted gravel.
- There is level to the rear of the cottage via the front door and the external path or via the external door in the double bedroom.



Getting in (and out) of the cottage

- The key safe for Forge Barn is on the left-hand side of the front door at low level.
- The front door (image 1) leads to the hallway and has an opening width of 104cm and a threshold height of 3cm.
- The clearance height through the front door is 200cm.
- There are alternative access doors, image 2 leads from the main bedroom to the garden and has an opening width of 107cm, a clearance height of 200cm and a threshold of 2cm.
- Image 3 leads from the sitting room to the garden and has a step down of 25cm, opening width of 90cm and a clearance height of 200cm.



1



2

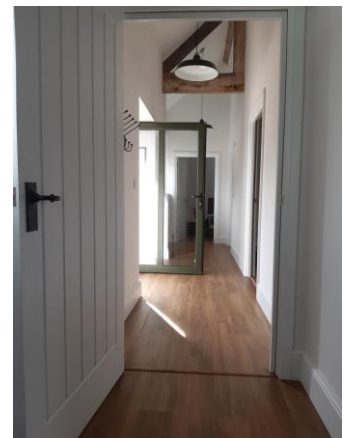


3



Getting around the cottage

- All rooms lead off the hallway. The floor covering throughout is vinyl.
- To the right of the front door is an open-plan kitchen, dining and sitting room. In front of the front door is the double bedroom. To left of front door, the hallway leads to a wet room and twin bedroom.
- There are coat hooks in the hallway with a height from the floor of 144cm.



Kitchen area

- The door from hallway to the open plan kitchen, dining and sitting area has an opening width of 85cm and a height clearance of 200cm.
- The height of worktop is 91cm.
- The adjustable hob and sink units can be moved within a range of of 63cm for knee clearance and 75cm for top of counter to 88cm for knee clearance and 100cm for top of counters.



- There is an electric oven, with a retractable door, dishwasher, washing machine/ dryer, cordless kettle, toaster, microwave and fridge/freezer. (Beko CFP168W).



Sitting Room and Dining Area

- On top of the vinyl floor, there is a thick rug of approximately 3cm high. If you need this to be removed for your holiday, please let us know.
- There is comfortable seating for 4 people. The seat height on the occasional chair is 44cm and the seat height on the sofa and armchair is 43cm.
- The coffee table height 40cm.
- There is a Smart television with DVD player. The TV has various accessibility enhancements including where the programme supports it. Information on how to set them will be in the Accommodation User Guide.



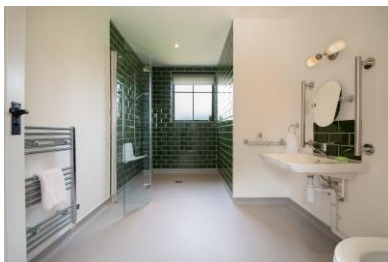
- There is radio and CD player.
- There is a log burner with nursery fire guard. If you require this to be removed for your stay, please let us know.



- There is a dining table with a height of 75cm with a knee clearance height of 66cm to the table apron. The distance from the edge of the table top to the apron is 29cm. The minimum width between the table legs is 43cm.
- The table seats 4 people. The chair height of 46cm.

Wet Room

- The door has an opening width of 85cm and the clearance height is 200cm.
- There is a non-slip floor covering.
- There is a WC which is 50cm high and has a spatula flush. There is no toilet lid. There is static grab rail to the left of the toilet and a drop down grab rail to the right.
- The wet room sink washbasin is 40cm high with long handle adjustable temperature control tap.
- The shower controls are 119cm high.
- Grab handles are provided.
- There is a shelf provided for toiletries to the left hand side of the sink as you face the mirror. The height of the shelf off the floor is 50cm



Master Bedroom

- King size (5ft) bed. The height of the bed is 50cm. The doorway has an opening width of 77cm with a height clearance 200cm.
- There is a built in wardrobe with a two clothes rail, the lower one has a height of 114cm.



Twin Bedroom

- The door leading into it has an opening width of 70cm with a clearance height of 200cm.
- The twin bedroom has two single (3ft) beds. The height of each bed is 49cm.
- There is a free standing wardrobe with a clothes rail which is at a height of 170cm.



Garden

The garden is shared with the other four cottages. It is fairly level and laid to lawn. Outside the cottage there is a compacted gravel patio with a table and chairs to seat four people.

The height of the garden table is 70cm to the base of the table and 74 to the top of the table. There are splayed pedestal feet with a clearance of approximately 30cm at knee height.

The seat height of the garden chairs is 45cm.





Additional Information

- Assistance dogs are welcome at all our cottages. If you are bringing an assistance dog to a non-dog cottage, please contact guestrelations@nationaltrust.org.uk so we may contact all future guests in case of an allergy.
- In the event of a fire, it is the responsibility of the guests to evacuate themselves. Under pillow vibration alarms are available if requested at time of booking.

Specialist equipment

Other specialist equipment such as wheelchairs, bath seats, toilet frames, hoists etc. may be available for loan or purchase from a local disability equipment provider. For further details, please contact guestrelations@nationaltrust.org.uk. Please note that any contacts supplied are done so in good faith and are not endorsed by the National Trust.

Feedback

All feedback is very helpful in informing us of ways in which we can improve access to all our accommodation. We welcome any comments or ideas from you to guestrelations@nationaltrust.org.uk.