

National Trust Cottages Accessibility Guide

South Lodge

Greenway,
Galmpton,
Nr. Brixham,
Devon
TQ5 0ES



Property Ref: 012040

Introduction

South Lodge is located on the Greenway Estate and is set back from the main visitor routes in woodland, enjoying extensive views down to the River Dart.

The cottage sleeps up to 6 people in 3 first-floor bedrooms, with a bathroom with shower and an additional separate shower room on the same floor.

The property is heated via the air source heat pump. There is also a wood burner in the sitting room.

The property is light and spacious. The gardens are not enclosed.

The Cottage is arranged as follows:

Ground floor

Entrance hall, utility room, kitchen, dining room and door to sitting room, sitting room with solid fuel stove. Stairs to the first floor are accessed via the sitting room.

First floor

Three bedrooms (2 doubles both with 5' bed, 1 twin), bathroom with shower over bath and shower room.

Pre-Arrival

- See the main webpage for booking and location details.
- Please contact us prior to booking if you have any specific access requirements. □
Directions provided with booking

Approach

The property is approached via the main entrance to the Greenway estate.

The initial well-maintained, level single-lane driveway is shared with pedestrians who use the driveway to access the main property from the car park. The driveway is wide enough for passing but care should be taken and speed limits adhered to. A green track to the left then ascends up to South Lodge through woodland.



Arrival & Parking Facilities

- There is parking for two vehicles under an open shelter to the left of the property approx. 80 metres away on the other side of the track. It is possible to pull in on a hard-standing, level area by the front door to unload.
- There is a wide area of concrete before the entrance with a small step up of 50mm from the hardstanding.
- There is outside lighting by the front door but if arriving after dark it is advisable to have a torch.



Getting in (and out) of the cottage

- Front door has a clearance width of 950mm, stone threshold with a step up of 30mm
- Combination-dial key box, height 1580mm to the right of the front door
- The front door opens into a hall area with a sunken mat 50mm depth, linoleum floor
- Hall length 2100mm, width 1350mm
- Hall pendant light on a movement sensor
- Back door from the kitchen, width 630mm with 2 x steps up from the kitchen to the back door, step height 130mm, treads of 290mm and 310mm, small wooden threshold



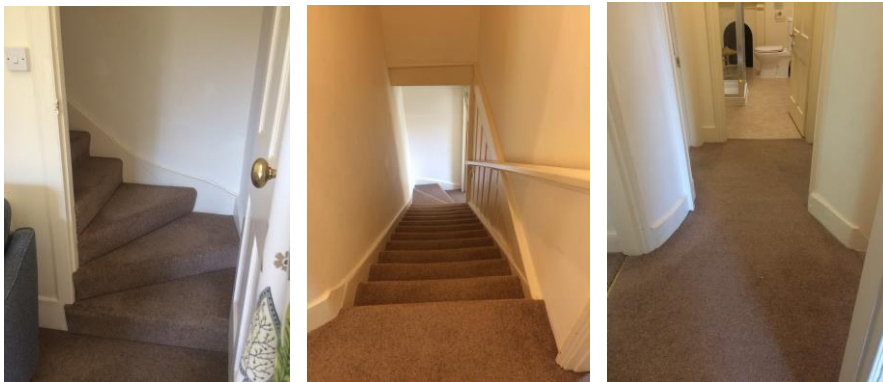
Getting around the cottage

Ground floor:

- Hall width 1350mm, length 2100mm

First floor:

- Door at the bottom of the stairs, width 780mm, height 1900mm
- Straight stairs with quarter-turn angular winders at the bottom, carpet
- Stairs with a step height 170mm, tread 240mm, step width 820mm
- Handrail banister on the left when ascending
- Irregular landing shape, circulation of 1100mm by 1100mm at the top of the stairs, carpet
- Pendant light at the top of the stairs



Ground floor:

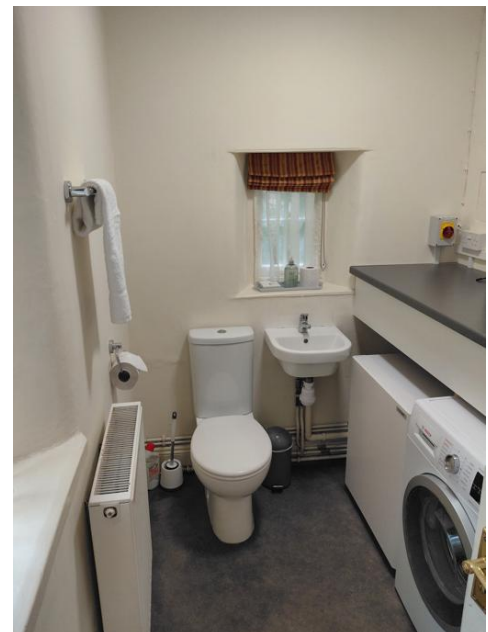
Kitchen



- Door width 900mm, height 1810mm, 10mm step down
- Continuation of linoleum floor from the hall
- Height of worktop 920mm
- Fitted kitchen with electric double oven and ceramic hob, tall freestanding fridge, under counter freezer, dishwasher, microwave
- Sink with mixer tap with washers
- Ceiling track spotlighting with 6 spotlights
- 2 x windows with view over back woodland garden and side garden
- Good circulation with minimum width to get to the fridge 800mm

Utility room/ground floor toilet

- Door width 760mm, step up 220mm
- Continuation of hall linoleum floor
- Toilet, seat height 420mm, push flush
- Sink, height 820mm, with lever mixer tap
- Washer-dryer
- Worktop height 920mm
- 2 x windows one over back garden, one over side by front door
- Minimum circulation width 800mm



Dining Room



- Door width 860mm, no threshold
- Carpet
- Table height 740mm, clearance underneath 620mm
- 6 x wooden dining chairs with wipe-able cushioned seat pads and backs, seat height 480mm
- 2 x windows one with views over front garden and down to the River Dart, the other with views over front entrance and woodland
- Ceiling pendant light and table lamp with under lampshade on/off switch
- Two-seater settee, seat height 500mm
- Good circulation

Sitting Room



- Door width 760mm, level threshold
- Carpet
- Wood burner
- 2 x large two-seater settees with a seat height of 470mm
- Window with views over front garden and down to River Dart, window over side garden and woodland
- Ceiling pendant light, 1 x table lamp with under lampshade on/off switch

First floor:

Double bedroom



- Door width 750mm, height 1910mm, level threshold
- Initial circulation when entering room 850mm, width to bedside table 540mm
- Carpet
- Ornamental fireplace (not in use)
- Divan bed, width 1450mm, length 1950mm, height 710mm
- 2 x side tables, 2 x bedside lamps with under lampshade on/off switches
- Ceiling pendant light
- Front window with river views, side window with woodland views
- Chair, seat height 400mm
- Built-in wardrobe, long cushioned dressing stool, seat height 430mm
- Chest of drawers
- Good circulation, minimum width on one side of the bed of 750mm

Double Bedroom



- Door width 770mm, height 1900mm, level threshold
- Carpet
- Divan bed, width 1350mm, length 1950mm, height 620mm
- 2 x side tables, 2 x bedside lamps with under lampshade on/off switches
- Ceiling pendant light
- Front window with river views, side window with woodland views

- 2 x chairs with a seat height 330mm
- Chest of drawers with table lamp, on/off push switch under lampshade
- Built-in wardrobe, long cushioned dressing stool, seat height 520mm
- Good circulation, minimum width on one side of the bed of 750mm

Twin Bedroom



- Door width 740mm, level threshold
- Carpet
- Twin divan beds, width 900mm, length 1900mm, height 640mm
- Centre table with bedside lamp with on/off switch on the cable, ceiling pendant light
- Chest of drawers with table lamp with on/off switch on the cable
- 2 x windows with side and back views of woodland
- Wall hooks with hangers, height 1800mm
- 2 x small armchairs, seat height 350mm
- Good circulation, space between beds 550mm, width from bed to the door 800mm

Shower room

- Door width 740mm, no threshold
- Linoleum floor
- Toilet height 420mm with push flush
- Shower cubicle internal measurements 700mm by 700mm with pivot door, access width 500mm, controls height 1300mm
- Sink height 820mm with washer twist taps
- Shaver socket height 1800mm
- Ceiling light, no window
- Circulation, minimum width from toilet to wall 830mm, and wall to shower cubicle 830mm



Bathroom



- Door width 720mm, no threshold
- Linoleum floor
- Toilet height is 420mm with push flush
- Bath, height 58mm, with washer twist taps
- Initial fixed screen strip then shower curtain, height to shower controls 1620mm, detachable shower head
- Sink height 840mm with washer twist taps
- Shaver socket 1840mm
- Ceiling light
- Circulation, side of bath 620mm, toilet to door 1100mm, sink to wall 1000mm
- Window overlooking woodland to the side
- Rush chair, seat height 470mm

Garden

- Access to the garden is via back or front door.
- Access to washing line in the back garden is via irregular stone steps, no handrail
- Unenclosed front garden lawn with seating area
- Views down to the River Dart



Additional Information

- Assistance dogs are welcome at all our cottages
- In the event of a fire, it is the responsibility of the guests to evacuate themselves. Vibrating fire/smoke detectors are available if requested at time of booking. Please contact us if you have any other specific access requirements in this respect.

Facilities at all cottages

The National Trust aims to expand the list of accessible /equipment/items available at each cottage and these may include

- Cordless kettle
- Hollowfibre bedding
- Chair with armrests
- Good reading light
- Large handle vegetable peeler
- Easy tin opener
- Non-slip mat for bath/shower
- Non-slip place mat



- Easy jar opener
- Information in alternative formats (on request)

Please note that we cannot guarantee that all items will be available at the time of your visit.

Please enquire at the time of booking regarding any particular requests.

Specialist equipment

Other specialist equipment such as wheelchairs, bath seats, toilet frames etc may be available for loan or purchase from the local Red Cross loan centre. Please check this out before booking the Cottage and contact us if you require further information.

<http://www.redcross.org.uk/standard.asp?id=89425>

Future Plans to improve Accessibility to National Trust Holiday Cottages

We are currently in the process of writing accessibility guides for all our holiday cottages and improving access over time for all our guests. All feedback is very helpful in informing us of ways in which we can improve access to all our cottages. We welcome any comments or ideas from you about access at this cottage and thank you for taking the time to do this. Please do this in the most convenient way for you. See contact details below or information on website.

About the Accessibility Guide

This Accessibility Guide is intended to provide key information about the cottage that may be particularly relevant to guests with disabilities. It is reviewed annually. Please contact us prior to booking if you would like more detailed information and we will be happy to oblige.

Phone: 0344 800 2070

Email: cottages@nationaltrust.org.uk

Access for All at the National Trust

We continue to work to improve accessibility at all our holiday cottages. We welcome comments and ideas on improving access.

Phone: 0344 800 2070

Email: cottages@nationaltrust.org.uk

Date: June 2026