

National Trust

National Trust Cottages Accessibility Guide

Cottage Ref: 007012

Gunby Old Rectory
Off Brambleberry Lane
Bratoft
Nr Skegness
Lincolnshire
PE24 5DJ



Introduction

- Gunby Old Rectory is a two storey cottage set on the edge of the Gunby Hall Estate in rural Lincolnshire but within 7 miles of the bracing Lincolnshire coastline.
- The cottage offers spacious internal accommodation and is set within large gardens.
- The Cottage is arranged as follows:

Ground Floor:

- Entrance Hallway, Reception Room, Lounge, Dining Room, Games Room, Dining Kitchen, Utility Room and Downstairs WC.

First Floor:

- 3 No. Double Bedrooms one with en-suite bathroom, 2 No. Twin Rooms and 1 No. Single Bedroom. 2 No. family bathrooms both with separate shower cubicles.

Pre-Arrival

- See the main webpage for booking and location details.
- Please contact us prior to booking if you have any specific access requirements.
- Directions provided with booking

Approach, Arrival & Parking Facilities



- Cottage is approached via narrow country lanes which are hard surfaced with soft verges.
- Large driveway with separate entrance and exit gates.
- Parking within the driveway for up to 5 vehicles.
- Possible to load and unload vehicles directly outside the cottage door.
- Ground surface relatively flat and constructed of compacted limestone grit.

Getting in (and out) of the cottage



- Keysafe for the cottage is located to the L/H side of the front door at 1230mm from floor level and has a spin dial mechanism.
- There are 3 No. steps up to the door and these are 55mm, 70mm and 150mm high respectively.
- The door width is 1100mm.

Getting around the cottage



Entrance Hallway

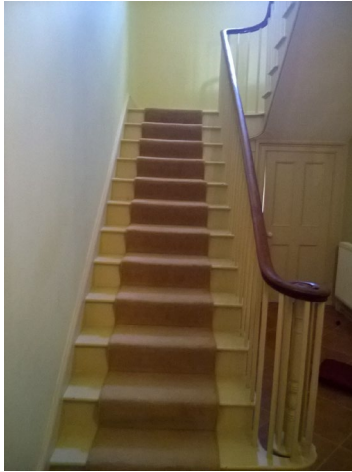


View from rear porch through kitchen corridor back to entrance hallway

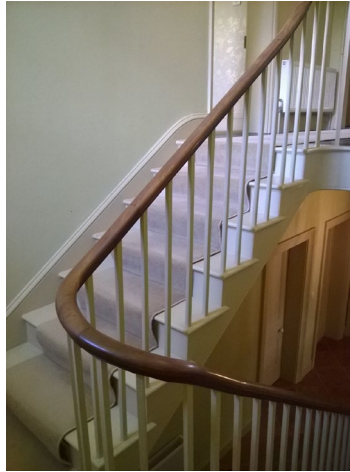
Ground floor:

- The ground floor accommodation has a single change of level where there is a single step between the kitchen corridor and the rear staircase corridor. This is 160mm high. There are tiled floors throughout the downstairs hallways and corridors.
- The lounge, dining room and small reception room all have bare floorboards with loose rugs over. The games room is carpeted. The kitchen has a tiled floor and the utility room has a vinyl cushion floor covering.

First floor:



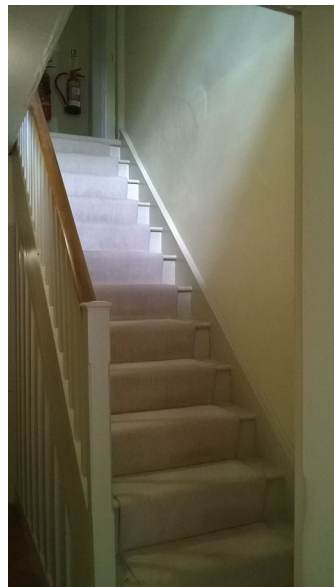
Main Staircase from Hallway



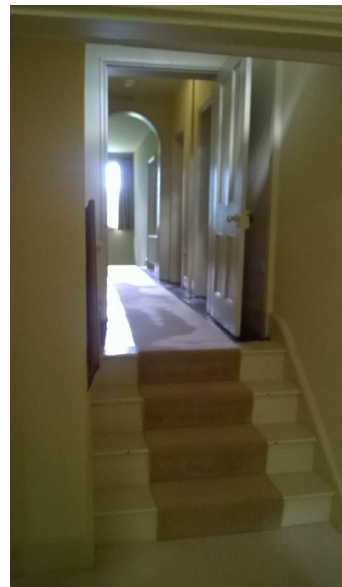
Upper Section of Main Staircase from Mid Landing



Main Staircase viewed from Top Landing



Rear Staircase to First Floor



View towards Main Staircase from Rear Staircase landing

- The first floor accommodation can be accessed via the main staircase or the rear staircase.
- Main staircase has 12 treads to the mid point landing at a height of between 150mm and 180mm. There are 7 further treads from the mid point to the main landing and these are between 150mm and 180mm in height. There is a single handrail to the right hand side as you ascend.
- There is a change in level from the rear staircase landing to the upper landing corridor where there are 4 further stairs which are 180mm high. The door to this corridor is 770mm wide.
- The rear staircase has 2 No. winders and 13 treads to the top. These are between 180mm and 200mm high. There is a single banister on the left hand side as you ascend.

Ground Floor - Hallway

- This is a spacious tiled area with doors off to small reception room with chess table, lounge /dining room, Downstairs WC, kitchen, games room with football table and utility room with washing machine and tumble dryer.

Small Reception (Chess) Room



- Entrance doorway is 890mm wide with level access into room.
- Dual aspect room with views over gardens. Central light pendant with 3 No. lights.
- Sofa with seat height of 360mm.
- Armchair with seat height of 470mm.
- Desk with chair with a seat height of 460mm.
- Chess table.
- Bare painted floorboards and single rug

Sitting Room



- 900mm wide door with level access through into the room
- Large dual aspect room which leads to the dining room with open fire, sofas, armchair and views over garden. Central light pendant with 5 No. lamps. 2 Floor lamps and 1 table lamp.
- 3 x large sofas (3-4 seaters), 2 with seat height of 460mm and 1 with seat height of 430mm. Armchair with seat height of 460mm. TV within cabinet and DVD player.

Dining Room



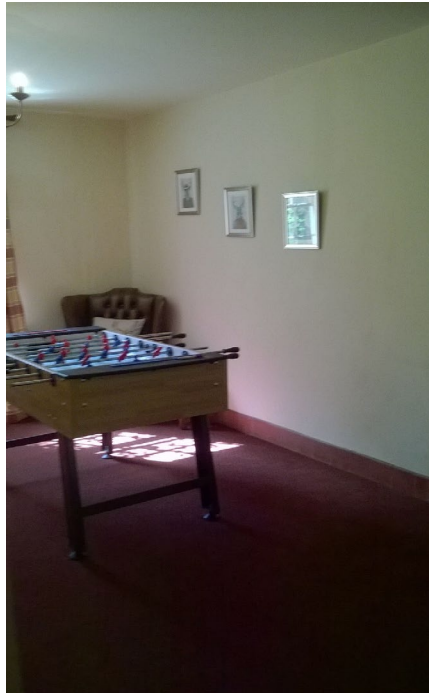
- Spacious dual aspect room with views to garden with long wooden table.
- 8 No. dining chairs with wooden backs and upholstered seats with seat height of 450mm. 2 No. carver chairs with armrests and seat height of 460mm.
- Wing chairs with a seat height of 460mm
- The room has a central pendant light with 5 No. lamps, 1 No. standard lamp and 1 No. table lamp.

Kitchen



- Single aspect room just off the hallway and a short walk to the dining room.
- The door into the kitchen is 800mm wide and has a level access.
- The worktops are 900mm high.
- Dining table with 6 No. chairs with a seat height of 450mm. No chairs have armrests.
- Central light pendant with 5 No. bulbs and under-cupboard lighting throughout.
- The kitchen includes a dishwasher, built under double ovens with induction hob over, microwave, fridge & freezer. Guests with pacemakers are advised to check with their doctor to ensure there will be no interference with their pacemaker. Guests with pacemakers are also advised to keep a distance of at least 60cm (2ft) from the hob when cooking.

Games Room With Table Football



- Entrance doorway is 820mm wide with level access and carpeted floor.
- Single aspect room
- Central ceiling pendant with 3 No. bulbs. 1 No. table lamp.
- Sofa with seat height of 470mm.
- 2 No. wing chairs with seat height of 440mm.

Utility Room

- Doorway is 720mm wide with level access into room.
- Single Strip light to ceiling.
- Worktop height 910mm.
- Washing machine.
- Condensing tumble dryer.



First Floor

Bedroom 1 (double bedroom at top of main stairs)



- Door into bedroom is 800mm wide and there is level access into the room.
- Dual aspect room with views over the gardens.
- Bed is 2000mm long x 1500mm wide x 670mm high
- Central ceiling pendant with 3 No. Lamps
- Bedside lights
- Free-standing wardrobe and chest of drawers.

Bedroom 2 (Twin bedroom top of main stairs)



- Door width is 770mm and has a level access into the room.
- Dual aspect room with views to gardens.
- Divan beds are 1900mm long x 900mm wide x 640mm high.
- Central ceiling pendant with 3 No. lamps.
- Shared bedside table lamp.
- Freestanding wardrobe

Large bath/shower room



- This is a single aspect room and comprises basin, WC, bath and separate walk-in shower unit. The doorway to the room is 770mm wide and has a level access.
- Basin is 820mm high.
- WC seat is 390mm high .
- Free-standing roll top bath is 730mm wide x 620mm high x 1630mm long
- Shower has a 90mm step up into the shower area and the cubicle entrance is 490mm wide.
- The shower has a monsoon style fixed shower head and a second movable shower spray head. The riser rail for this extends from 1320mm to 1880mm from floor level.
- The shower controls are between 1100mm and 1270mm from the shower base level
- This is a large room with good circulation space and a vinyl covered floor.

Bedroom 3 (double bedroom with ensuite)



- Single aspect room with entrance door 780mm wide and with level access. The door to the ensuite is 760mm wide and also has level access into the room.
- Central ceiling pendant with 3 No. lamps, 2 Bedside lamps and 1 further table lamp.
- Freestanding wardrobe and chest of drawers.
- Occasional chair with seat height of 360mm.
- Bed is 1900mm long x 1800mm wide x 630mm high. This can be made into 2 singles on request.

- This is a single aspect en-suite bathroom which comprises bath with shower over, toilet and wash basin.
- Basin is 820mm high.
- WC seat is 390mm high.
- The bath is 540mm high.
- The shower riser bar extends from 1450mm to 1900mm from the base of the bath.
- The shower controls are 1120mm from the base of the bath.

Bedroom 4 (twin bedroom)



- Single aspect room with views of garden. Door to room is 750mm wide and there is level access into the room.
- Wooden beds 1900mm long x 1200mm wide x 590mm high
- Bedside tables with lamps and central pendant light with 3 No. bulbs.
- Free standing wardrobe

Bedroom 4 – Single Bedroom



- Single aspect room with door width of 750mm which narrows to 570mm once inside the bedroom lobby.
- Single divan bed 1900mm long x 900mm wide x 610mm high.
- Single ceiling pendant and 2 No. table lamps.
- Chest of drawers with mirror over.
- Occasional chair with seat height of 420mm.
- Clothes hooks on wall in bedroom lobby.

Bedroom 6 (double bedroom)



- Single aspect room with views over the rear garden. Door to bedroom is 760mm wide and has a level access into the room.
- Spacious room with double bed, table, armchair & chest of drawers
- Clothes hooks on the back of the door.
- Bedside lights each side of bed and additional lamp on dressing table.
- Central ceiling pendant light with 3 No. lamps.
- Bed is 1850mm long x 1500mm wide x 640mm high

Second Bath/Shower room



- Single aspect room with WC, basin, bath and separate shower cubicle.
- Central ceiling pendant and 2 No. wall lights above basin.
- Basin height 850mm
- WC seat height 410mm
- Bath height 560mm
- Step into shower cubicle is 200mm high
- Cubicle entrance is 560mm wide.
- Single monsoon style fixed shower head.
- Shower controls are 1220mm from shower tray floor.

Garden & Rear Yard Areas



- Private garden to back and side of cottage, level and mainly laid to grass.
- There is a gated rear yard area at the back of the house with an entrance into the rear porch area. The entrance door is 720mm wide and there is step into the house that is 120mm high.
- Garden furniture comprises wooden tables and chairs with backrest and arms.

Additional Information

- Assistance dogs are welcome at all our cottages
- In the event of a fire, it is the responsibility of the guests to evacuate themselves. Vibrating fire/smoke detectors are available if requested at time of booking. Please contact us if you have any other specific access requirements in this respect.
- There is no mobile phone signal to the cottage.
- Wifi is available.

Facilities at all cottages

The National Trust aims to expand the list of accessible /equipment/items available at each cottage and these may include

- Cordless kettle
- Hollowfibre bedding
- Chair with armrests
- Good reading light
- Large handle vegetable peeler
- Easy tin opener
- Non-slip mat for bath/shower
- Non-slip place mat
- Easy jar opener
- Information in alternative formats (on request)

Please note that we cannot guarantee that all items will be available at the time of your visit. Please enquire at the time of booking regarding any particular requests.

Specialist equipment

Other specialist equipment such as wheelchairs, bath seats, toilet frames etc may be available for loan or purchase from the local Red Cross loan centre. Please check this out before booking the Cottage and contact us if you require further information.

<http://www.redcross.org.uk/standard.asp?id=89425>

Future Plans to improve Access to NT Holiday Cottages

- We are currently in the process of writing accessibility guides for all our holiday cottages and improving access over time for all our guests. All feedback is very helpful in informing us of ways in which we can improve access to all our cottages. We welcome any comments or ideas from you about access at this cottage and thank you for taking the time to do this. Please do this in the most convenient way for you. See contact details below or information on website.

About the Accessibility Guide

- This Accessibility Guide is intended to provide key information about the cottage that may be particularly relevant to guests with disabilities. Please contact us prior to booking if you would like information that is more specific and we will be happy to oblige.

Email: cottages@nationaltrust.org.uk

Phone: 0344 800 2070

Access for All at the National Trust

- The Access for All office works to improve access at all National Trust cottages and properties. The office welcomes comments and ideas on improving access.

Phone: 01793 818531

Email: accessforall@nationaltrust.org.uk