

## **National Trust Cottages Accessibility Guide**

**Guy's Cottage**  
**Port Quin**  
**Nr. Port Isaac**  
**Cornwall**



Guy's is the cottage nearest the sea

**Cottage Ref: 011035**

### **Introduction**

- Guy's Cottage is right by the slipway to Port Quin Bay. The cottage is semi-detached and on three floors with low beams and a sloping kitchen floor, giving the cottage so much of its character. There are three other NT holiday cottages nearby.
- The cottage is heated by electric eco-radiators, night storage and portable oil-filled heaters. There is a wood burning stove in the sitting room and electric towel rails in the bathroom and shower room.
- In the event of power failure emergency lighting is provided.
- There is a telephone for emergencies in the store below Guy's Cottage.

### **Ground Floor**

- Entrance lobby, shower room with WC, stairs to first floor, under-stairs cupboard with consumer unit, and another cupboard with washing/ machine dryer with storage space above.

- Half way up the staircase to the first floor is a “mezzanine” bedroom with 6’ bed which can be a twin upon request.

## **First floor**

- Sitting room with stable door to terrace.
- Kitchen with stable door to terrace.

## **Second Floor**

- Twin bedroom, double bedroom, bathroom, small landing area.

## **Pre-Arrival**

- See the main webpage for booking and location details.
- Please contact us prior to booking if you have any specific access requirements.
- Directions provided with booking.

## **Approach**

- The drive down into Port Quin is relatively steep with winding lanes which can become busy during the season.

## **Arrival & Parking Facilities**

- There is designated parking for two cars in the Port Quin car park, 50 metres away. The surface is gravelled and reasonably level. There is a stream running along one side of the car park.
- The key safe is in a store underneath Guy’s Cottage. The entrance to the store is at the side of Guy’s Cottage opposite Carolina Cellar. There is a push-button combination lock at a height of 1200mm on a bolted wooden door. The spin dial key safe for Guy’s is on the wall immediately to the left as you enter the store before the steps down to lower level.
- There is a sensor light above the outside door to this store which helps illuminate the key safe. There is also a light operated by a pull-cord inside the store. A torch is recommended, especially if arriving in the dark. The key safe is operated by a combination lock mechanism, where the dials need to be turned to the cottage combination code.
- The cottage front door is lit with a sensor light but there is no light from the main car park.



Steps to store



Store, for key collection



Cottage key safes

## Getting in (and out) of the cottage

- There are 2 slate steps to the front door approximately 200mm high. The second step is 370mm wide.
- The stable-type front door is opened with a latch and a Euro lock. There is a wooden threshold of 30mm high and a depth of 110mm and then a coir mat in a doorwell inside the lobby. There is a small step from the doorwell onto the lobby floor.
- The clear opening width of the front door is 700mm.
- The light switch is on the right-hand side at a height of 1400mm.



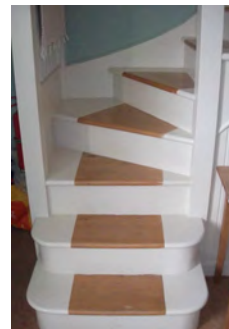
## Getting around the cottage

### Ground floor:

- Lobby with doors to shower/WC, laundry cupboard, understairs cupboard
- Uncarpeted stairs to mezzanine and first floor

### Mezzanine

- 13 Wooden stairs leading to mezzanine room, steps are 180mm high.
- There is a handrail on the right-hand side 920mm to 970mm high.
- The first two steps do not have a handrail.
- There is a step at a height of 160mm on the landing for the mezzanine bedroom.

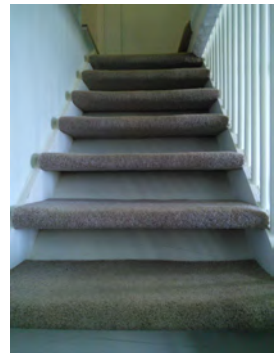


## First floor

- From the small landing area next to the mezzanine bedroom 4 stairs lead to the sitting room door.
- There is a handrail on the left-hand side with a height of 930mm.
- Each step has a height of 210mm.
- There is a rounded, wooden lip of 40mm over the threshold.
- Clear opening width of door is 700mm.
- Sitting room with staircase to second floor, door to terrace, door to kitchen
- Threshold to kitchen 110mm deep and 25mm high.
- Where the kitchen leads off the sitting room there is a narrow gap of 530mm.
- The kitchen floor is slightly sloping

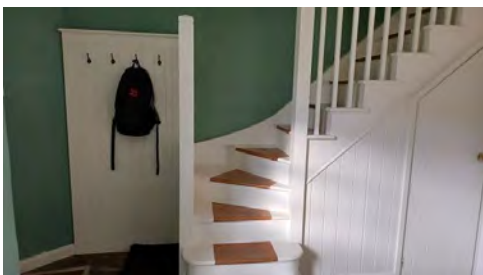
## Second Floor

- Stairs to second floor, bedrooms and landing are carpeted.
- There is a handrail on the right-hand side between 910mm to 1030mm high.
- Off the small landing area at the top of the stairs there is a step up into the bathroom of 180mm high and a step up to the bedrooms of 150mm.
- Clear opening width of doors is 690mm.
- Low beams and sloping ceilings in bedrooms and bathroom.
- Space for slot in stairgate at top and bottom of these stairs.



## Entrance Lobby

- Main light switch is right of the front door at a height of 1400mm.
- Large entrance lobby with door to shower and WC.
- Washer/dryer is in a cupboard.
- Coat hooks behind the front door at a height of 1400mm.
- Wooden chair with a seat height of 420mm and a back height of 370mm.
- A cupboard with restricted head height of 1360mm and a width of 500mm contains the consumer unit.
- Wall-mounted heater





## Shower room

- Main light switch is outside of the shower room to the right of the door at a height of 1400mm.
- Lighting two led spots and one central ceiling light.
- Width of door is 680mm.
- Step up to the WC and hand basin of 90mm.
- WC is 430mm high with lever flush.
- Wash hand basin with a height of 900mm with twist taps.
- Mirror, light and shaver point over hand basin.
- There is a step of 260mm into the shower.
- The width of the door into the shower is 380mm.
- The shower controls are at a height of 1050mm.
- Electric towel rail
- Wooden chair with seat and back height of 430mm.



## Mezzanine Bedroom

- Main light switch is to the right of the door at a height of 1420mm.
- Central pendant ceiling light.
- There is a 6' 1900mm bed, which can be a twin upon request.
- Bed has a height of 670mm, length of 2000mm
- Two bedside cabinets with bedside lamps.
- Hanging rail at a height of 1600mm.
- Large wall mirror.
- Wall mounted radiator
- Two windows at high level one of which cannot be reached to open without using a window opening tool, which is provided. The other window is sealed closed.
- Window seat with cushion 580mm high
- Wooden chair 470mm seat height



## Sitting Room

- Main light switch is on the stairs wall, on the right at height of 1430mm.
- Two globe ceiling lights.
- Two large sofas (450mm seat height) and two armchairs 450 seat height.
- 40-inch TV with separate DVD on a narrow table with drawers and shelving
- CD player.
- Wood burning stove.
- Standard lamp and table lamp
- View over Lacombe garden towards the sea.
- Table under the window with knee clearance of 600mm.
- Window seat with cushion height of 580mm.
- Three dining chairs. Two with seat height of 450mm and the other 480mm.
- There is door to the terrace with a step down of 225mm.
- Wooden storage chest/coffee table
- Small side table 430mm high
- Stairs to second floor



## Kitchen

- Main light switch is to right of door at a height of 1370mm.
- Narrow gap (650mm) between wall and edge of worktop at entrance to kitchen.
- Door to terrace opening width of 800mm, wood threshold of 60mm deep, depth of 90mm plus a step down of 60mm.
- Central globe ceiling light.
- Work tops range 850mm to 930mm due to sloping Built in electric cooker, small top oven with grill and main bottom oven.
- Separate ceramic hob with extractor fan and light above
- Built -in dishwasher and fridge/freezer.
- Microwave incorporated into wall floor.
- Ceramic sink with lever operated mixer tap
- unit 530mm above worktop.
- Toaster and cordless kettle.
- Pine kitchen table with knee clearance of 610mm.
- Six wooden chairs, with a seat height 460mm and a back height of 430mm.
- Window seat 560mm high.



## Twin Bedroom

- Main light switch is to the right of the door at a height of 1370mm.
- Central pendant ceiling light.
- Two single beds 3' 950mm wide, 600mm high, 1900mm long and a clearance of 50mm below bed.
- Sloping beams into the eaves with a headroom above the bed of 500mm.
- Gap between beds is 500mm.
- Two bedside cabinets with bedside lamps.
- Wardrobe rail 1600mm high in restricted door height cupboard min height 1340mm.
- Small pine chest in this restricted height cupboard.
- Small wall mirror.
- Sloping ceiling either side of bed with very restricted head height and low beams
- Wall-mounted radiator



## Double Bedroom

- Main light switch is to the right of the door at a height of 1360mm.
- Two wall lights above the bed.
- High window, window ledge is 1200mm high.
- Two bed side cabinets with bed side lamps.
- Four drawer pine chest.
- Built in wardrobe with hanging rail at a height of 1500mm.
- Large wall mirror
- Bed 5' (1500mm), with a height of 680mm, length of 2000mm and a clearance of 40mm below bed.
- 550mm space either side of bed.
- Low beams restrict head height on one side of the bed.
- Wooden chair seat and back height of 460mm.



## Bathroom

- The light switch is at the top of the stairs at a height of 1560mm.
- Central pendant ceiling light.
- Standard bath with integral handgrips. Height of bath is 560mm.
- Hand-held push shower attachment on twist mixer taps.
- WC has a seat of height of 430mm and push flush.
- Hand basin is 830mm high, with mixer twist taps and drawers below.
- Electric ladder type heated towel rail. Wall mounted radiator
- Mirror, shaver and light above hand basin.
- Wooden chair with a seat height of 350mm and back height of 380mm.
- Table with drawers 760mm high.





## Garden

- Terrace with circular wooden garden table with knee clearance of 670mm and 6 armed chairs with seat height of 400mm and a back height of 460mm.
- The terrace is uneven and partly covered in slate and partly with concrete.
- Gate to Southwest coastal path.
- There is a washing line on a grassy area, for open air drying. This involves a steep climb including some steps.
- Steep climb involving steps to this garden which has a picnic table, washing line and compost facilities.



## Additional Information

- Assistance dogs are welcome at all our cottages
- In the event of a fire, it is the responsibility of the guests to evacuate themselves. Vibrating fire/smoke detectors are available if requested at time of booking. Please contact us if you have any other specific access requirements in this respect.
- There is no mobile phone signal in Port Quin.
- Carpets are 80/20 wool/man-made fibres.
- Duvets and pillows are made of hollowfibre.
- Cushions are hollowfibre or man-made.

## Facilities at all cottages

In addition to the standard equipment and facilities, each cottage is equipped with the following:

- Chair with armrests in sitting room.
- Good reading light
- Non-slip mat for bath/shower
- Information in alternative formats (on request)

We aim to provide these items in all cottages but please check when booking as to their availability and to check if new items have been added to the list.

## Specialist equipment

Other specialist equipment such as wheelchairs, bath seats, toilet frames etc may be available for loan or purchase from the local Red Cross loan centre. Please check this out before booking the Cottage and contact us if you require further information.

<https://www.redcross.org.uk/get-help/borrow-a-wheelchair>

<https://www.redcross.org.uk/get-help/hire-a-toilet-aid>

## Future Plans to improve Access to National Trust Holiday Cottages

- We are currently in the process of writing accessibility guides for all our holiday cottages and improving access over time for all our guests. All feedback is very helpful in informing us of ways in which we can improve access to all our cottages. We welcome any comments or ideas from you about access at this cottage and thank you for taking the time to do this. Please do this in the most convenient way for you. See contact details below or information on website.

## About the Accessibility Guide

- This Accessibility Guide is intended to provide key information about the cottage that may be particularly relevant to guests with disabilities. Please contact us prior to booking if you would like information that is more specific and we will be happy to oblige.

Email: [holiday.enquiries@nationaltrust.org.uk](mailto:holiday.enquiries@nationaltrust.org.uk)

Phone: 0344 800 2070



## **Access for All at the National Trust**

- The Access for All office works to improve access at all National Trust cottages and properties. The office welcomes comments and ideas on improving access.

Phone: 01793 818531

Email: [accessforall@nationaltrust.org.uk](mailto:accessforall@nationaltrust.org.uk)

Date: January 2023