



Gwernouau Cottage

Ysbyty Ifan
Betws-y-Coed
North Wales
LL14 0PG

Ref: 008013

Introduction

- This appealing cottage is part of a working farm on the Ysbyty Estate.
- The cottage can accommodate five people plus a cot.
- Multi fuel fire in sitting room.
- Heating and hot water supplied via air source heat pump.
- Ample parking adjacent to cottage for up to two cars.

The accommodation is arranged as follows:

Ground Floor:

- Kitchen, dining area, sitting area and bathroom.

First Floor:

- One double bedroom, one single bedroom and one twin bedroom

Pre-Arrival

- See the main webpage for booking and location details.
- Please contact us prior to booking if you have any specific access requirements.
- Directions provided with booking.
- Bring torch if arriving in the dark as there are no streetlights here.

Approach

- Gwernouau cottage is situated on a working farm and access to the cottage is along a narrow track which is uneven in places and there are several farm gates which need to be re-closed.



Part of Access track



View of Parking in front of the cottage

Arrival & Parking Facilities

Parking is adjacent to the cottage. The key safe is in a black box outside the front door to the right (as facing). It is operated by a push button mechanism. A torch is recommended especially if arriving in the dark as the numbers on the box can be difficult to see. The key is returned to the key safe on departure.

Getting in (and out) of the cottage

- The front door has a clear opening width of 89cm.
- There is no back entrance to this cottage

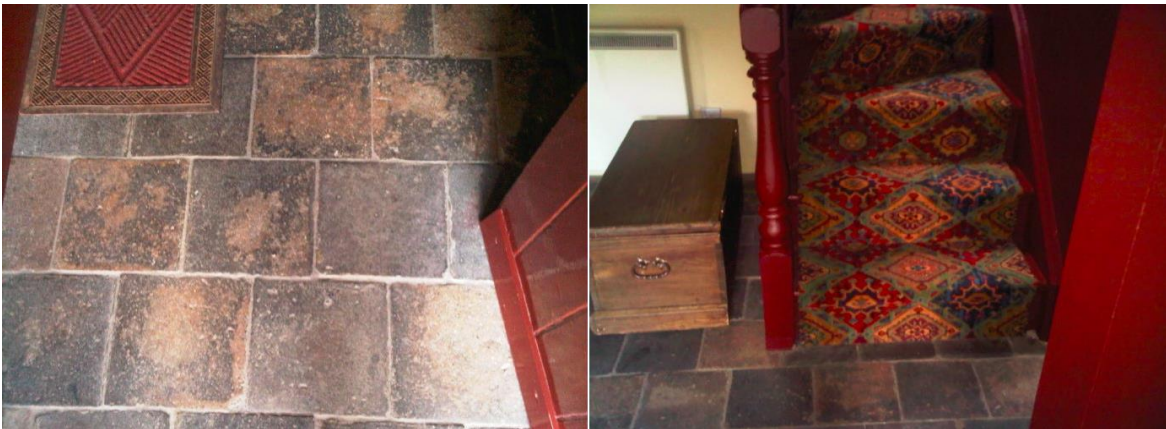


Front Door

Getting around the cottage

Ground Floor

- Level access from front door through kitchen, dining area, sitting area and bathroom.
- The cottage has stone floors throughout the first floor.
- The staircase to the first floor is 77cm wide with the height of the risers being 20cm.
- Bannister rail is 87cm.
- The width of the bathroom door is 83cm.



Ground Floor covering

First floor:

- The width of the bedroom doors is 74cm.
- Wooden floors throughout the first floor.

Sitting Room, Dining area

- One large sofa with a seat height of 43cm.
- Two winged chairs with seat height of 47cm.
- Log Burner.
- Standard lamp, table lamp and main light.
- Good natural light from the window to the front garden.
- Dining table with a height of 77cm and chairs with a seat height of 46cm.

Dining Area



Kitchen

- The kitchen has a width of 120cm.
- Height of worktop is 90cm.
- Electric cooker with ceramic top and fridge freezer.
- Fluorescent lighting.
- Electric toaster and kettle.
- Washing Machine



Kitchen

Ground Floor Bathroom

- WC, basin and bath with shower over.
- The WC is 47cm high.
- The basin is 81cm high.
- Acrylic bath is 57cm high x 170cm x 68cm wide.



Bathroom

Double Bedroom

- On first floor.
- The bed is 73cm high x 160cm wide x 188cm long.
- Antique brass/iron bed.
- Main light.
- Bedside chests with lamps.
- Small rug with non-slip backing to left of bed.



Master Bedroom

Twin Bedroom

- On first floor.
- The beds are 73cm high x 90cm wide and 188cm long.
- Antique brass beds.
- Bedside table with lamp for each bed.
- Wardrobe.
- Chest of drawers
- Small rugs with non-slip backing next to each bed.



Twin Bedroom

Single Bedroom

- On first floor.
- The bed is 73cm high x 90cm wide and 188cm long.
- Antique brass beds.
- Bedside table with lamp.
- Wardrobe.
- Small rugs with non-slip backing.



Single Bedroom.

Garden

- Small informal garden to the front of the property.



Seating in the garden

Additional Information

- Assistance dogs are welcome at all our cottages.
- Pets other than assistance dogs cannot be accommodated here.
- In the event of a fire, it is the responsibility of the guests to evacuate themselves. Vibrating fire/smoke detectors are available if requested at time of booking. Please contact us if you have any other specific access requirements in this respect.

Facilities at all cottages

The National Trust aims to expand the list of accessible /equipment/items available at each cottage and these may include:

- Cordless kettle
- Hollowfibre bedding
- Chair with armrests
- Good reading light
- Large handle vegetable peeler
- Easy tin opener
- Non-slip mat for bath/shower
- Non-slip place mat
- Easy jar opener
- Information in alternative formats (on request)

Please note that we cannot guarantee that all items will be available at the time of your visit. Please enquire at the time of booking regarding any particular requests.

Specialist equipment

Other specialist equipment such as wheelchairs, bath seats, toilet frames etc may be available for loan or purchase from the local Red Cross loan centre. Please check this out before booking the Cottage and contact us if you require further information.

<http://www.redcross.org.uk/standard.asp?id=89425>

Future Plans to improve Access to National Trust Holiday Accommodation

- We are currently in the process of writing accessibility guides for all our holiday cottages and bunkhouses and improving access over time for all our guests. All feedback is very helpful in informing us of ways in which we can improve access. We welcome any comments or ideas from you about access at this cottage and thank you for taking the time to do this. Please do this in the most convenient way for you. See contact details below or information on website.

About the Accessibility Guide

- This Accessibility Guide is intended to provide key information about the accommodation that may be particularly relevant to guests with disabilities. Please contact us prior to booking if you would like information that is more specific, and we will be happy to oblige.

Email: cottages@nationaltrust.org.uk

Phone: 0344 8002070

Access for All at the National Trust

- The Access for All office works to improve access at all National Trust accommodation and properties. The office welcomes comments and ideas on improving access.

Phone: 01793 818531

Email: accessforall@nationaltrust.org.uk

April 2023