

## National Trust Cottages Accessibility Guide

### Helston Lodge

Penrose Estate  
Helston  
TR13 0RD



Ref: 011086

### Introduction

Helston Lodge is a traditional, stone-built, detached gatehouse on the Penrose Estate. It has far-reaching views over Loe Pool and the countryside beyond.

The cottage is arranged as follows:

#### **Ground floor:**

Sitting room, Kitchen/Diner, Dining Hall, Laundry room/WC, Rear Lobby

#### **First floor:**

Bathroom a twin bedroom and a superking bedroom

### Pre-Arrival

- See the main webpage for booking and location details.
- Please contact us prior to booking if you have any specific access requirements.
- Directions provided with booking

### Arrival & Parking Facilities

The cottage is reached via a track marked private which runs through the Penrose estate. There is a gate which is sometimes locked but guests are given the padlock code in advance. The track runs alongside the walled garden of the estate to a T junction where you turn left and follow the road around and right to the other side of the lake. Helston Lodge is just around the bend facing directly on to the water. There is plenty of parking space to the side and rear of the house.



*View from the parking area at the side of Helston Lodge looking across Loe Pool*

## Getting in (and out) of the cottage

- There is a granite chipping pathway around the cottage. The entrance door is at the back and there is a combination key safe on the wall to the right of the door.
- There is an outside light, but we recommend you also bring a torch with you.



## Getting around the cottage

### Ground floor

- Rear door opens into a small lobby
- Door to WC
- Door to sitting room from which the main front door opens to an external canopied porch
- Door to dining hall with door from there to kitchen/diner
- Turning stairs from dining hall to first floor

### First Floor

- Landing with doors off
- Bathroom
- Two bedrooms, one superking, one twin

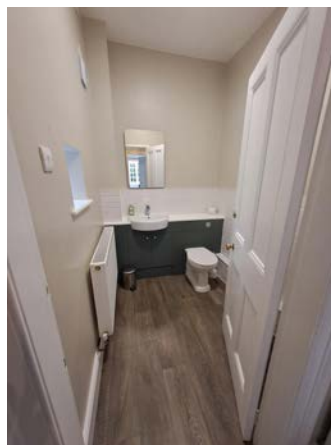
### Rear lobby (single aspect)

- Part-glazed rear door (used as main entrance) opens into lobby
- Amtico wood effect flooring
- Ceiling light
- Wooden chair with cushion seat 420mm high
- Central heating radiator
- Wall mounted coat hooks
- Doors to laundry, sitting room, dining hall



### WC/cloakroom (single aspect)

- Amtico wood effect flooring
- Ceiling light
- Basin with lever tap (873mm high)
- Mirror with integrated light
- WC 420mm high
- Central heating radiator
- Bench and shoe rack (500mm high, 260mm wide)



## Sitting room (dual aspect)

- Fitted carpet
- Two ceiling lights
- One table lamp and one standard lamp
- Central heating radiator
- Woodburning stove
- Bay window to easy aspect
- Centre panel of front door opens to reveal central glazed panel with southerly views
- 3 seater sofa ( 2000mm wide, 700mm high with seat height of 460mm)
- 2 seater sofa (1450mm wide, 700mm high with a seat height of 460mm)
- Writing desk (580mm knee height)
- Wooden chair with cushioned seat (480mm high)
- Wooden storage chest coffee table (350mm high, 400mm deep, 760mm wide)
- 32-inch TV on wooden table (660mm high, 760mm wide 460mm depth)
- DVD player
- Chest of drawers (900mm high, 580mm wide, 500mm deep)



## Dining Hall (dual aspect)

- Fitted carpet
- Ceiling light. Table lamp
- Central heating radiator
- Dining table 1406mm long x 98mm wide x 700mm high
- Four dining chairs with cushion seats 440mm seat height
- Sideboard 820mm high
- Stairs to first floor
- Door to kitchen



## Kitchen/diner (single aspect)

- Amtico wood effect flooring
- Ceiling light.
- Three adjustable spotlights. Under-cupboard strip lights
- Central heating radiator
- Range of kitchen floor and wall units with a 910mm high worktop
- Kitchen table 1203mm long x 890mm deep x 640mm knee height
- Three wooden chairs and one carver chair 430mm seat height
- Fridge-freezer, Dishwasher, Microwave, Toaster, Kettle
- Electric cooker with induction hob and extractor hood
- Please note there is an induction hob at this cottage. It will only work when a suitable pan is placed on the hob. To check if this working, try putting a saucepan of water on the hob. Guests with pacemakers are advised to check with their doctor to ensure there will be no interference with their pacemaker. Guests with pacemakers are also advised to keep a distance of at least 60cm (2ft) from the hob when cooking.



## Stairs to first floor

- Turning stairway with banister (900mm) on right to first floor landing
- Fitted carpet
- Four steps up from dining hall to small landing. Thirteen more steps to top landing
- Ceiling light on two-way switch
- Doors from top landing to bathroom and two bedrooms
- Full length mirror on wall
- There are no stair gates provided in this cottage



## Bathroom (single aspect)

- Amtico wood effect flooring
- Ceiling light
- Electric towel rail
- WC 420mm seat height
- Wash basin with lever taps (873mm high)  
Mirror with integrated light above
- Bath with lever tap
- Electric shower over bath with safety glass side panel



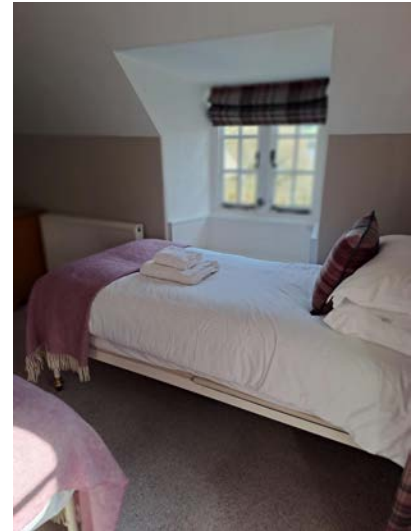
## Double bedroom on east side (dual aspect)

- Fitted carpet
- Ceiling light. Two table lamps
- Central heating radiator
- Built in wardrobe
- Two rocking chairs with cushion seats and backs
- Two bedside tables 820mm high
- Chest of drawers with freestanding mirror 840mm high
- Superking bed wrought iron bedstead 700mm high



## Double bedroom on west side (dual aspect)

- Fitted carpet
- Ceiling light. Two table lamp
- Central heating radiator
- Window to west aspect with seat below (480mm high)
- Window to front with narrow seat below (520mm high)
- Chest of drawers with freestanding mirror 780mm high
- One bedside cabinet 710mm high
- Built-in wardrobe
- Two twin beds with wrought iron bedsprads 700mm high



## Garden

- Accessed via a wooden picket gate in the parking area on the east side
- Gravel path and surrounding areas with grass and trees
- One gently sloping part of the garden on the north side is accessed via two granite steps
- Composite Table and 4 chairs
- Behind the lodge is a single storey store and a gravelled area to the west with a rotary dryer



## Additional Information

### Facilities at all cottages

The National Trust aims to expand the list of accessible /equipment/items available at each cottage and these may include

- Cordless kettle
- Hollowfibre bedding
- Chair with armrests
- Good reading light
- Large handle vegetable peeler
- Easy tin opener
- Non-slip mat for bath/shower
- Non-slip place mat
- Easy jar opener
- Information in alternative formats (on request)

Please note that we cannot guarantee that all items will be available at the time of your visit. Please enquire at the time of booking regarding any particular requests.

### Specialist equipment

Other specialist equipment such as wheelchairs, bath seats, toilet frames etc may be available for loan or purchase from the local Red Cross loan centre. Please check this out before booking the Cottage and contact us if you require further information.

<https://www.redcross.org.uk/get-help/borrow-a-wheelchair>

<https://www.redcross.org.uk/get-help/hire-a-toilet-aid>

## Future Plans to improve Access to National Trust Holiday Accommodation

- We are currently in the process of writing accessibility guides for all our holiday cottages and bunkhouses and improving access over time for all our guests. All feedback is very helpful in informing us of ways in which we can improve access. We welcome any comments or ideas from you about access at this cottage and thank you for taking the time to do this. Please do this in the most convenient way for you. See contact details below or information on website.

### About the Accessibility Guide

- This Accessibility Guide is intended to provide key information about the accommodation that may be particularly relevant to guests with disabilities. Please contact us prior to booking if you would like information that is more specific and we will be happy to oblige.

Email: [holiday.enquiries@nationaltrust.org.uk](mailto:holiday.enquiries@nationaltrust.org.uk)

Phone: 0344 8002070



## **Access for All at the National Trust**

- The Access for All office works to improve access at all National Trust accommodation and properties. The office welcomes comments and ideas on improving access.

Phone: 01793 818531

Email: [accessforall@nationaltrust.org.uk](mailto:accessforall@nationaltrust.org.uk)

April 2026