

National Trust

National Trust Cottages Accessibility Guide

Hendre Isaf



Hendre Isaf
Ysbyty Ifan
Nr. Betws-y coed
Conwy
North Wales
LL24 0HP

Ref: GW001

Introduction

- The bunkhouse can accommodate up to 18 people.
- Ground source heat pump supplies central heating and hot water throughout.
- Sitting room, kitchen, and dining room in huge hall with open beams.
- Sleeping on two levels in stable form dividers.
- Parking available for twelve cars.
- Dogs are not permitted at the property.

Hendre Isaf is arranged as follows:

Ground floor

- The main entrance door opens onto a large open hall containing the seating area to the left hand side and down one step is the dining area and kitchen.
- Flat access to male toilets, showers, wash hand basins and sleeping area, with two steps up, to the right.
- Staircase to access the other showers, toilets, showers and sleeping area ahead and to the right.



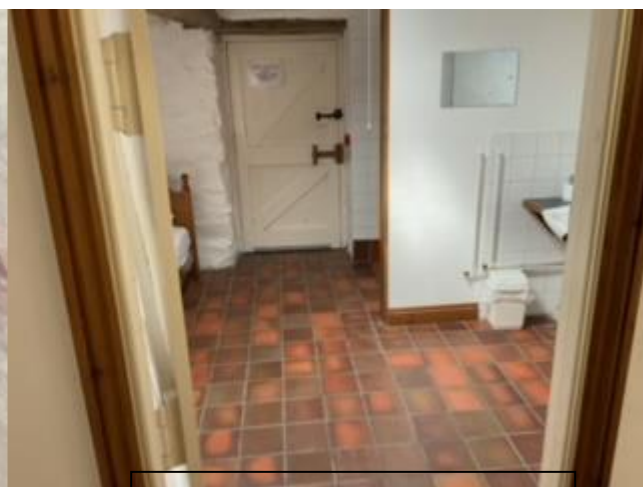
Dining Area



Kitchen



Access to lower ground floor



Lower ground floor bedroom

Lower ground floor

- Stairs down to small hallway to single Bedroom with toilet, shower and wash hand basin

Ground floor sleeping accommodation

- Small set of stairs leads to downstairs sleeping accommodation.
- Sleeping is on five bunk beds sleeping 10 people in stable like partitioning.



Access to Ground Floor Sleeping



Ground floor bunk beds



Stairs to First floor



Single beds in partitions

First floor

- Stairs to small balcony leads to female toilets, showers, and wash hand basins.
- Small staircase to Female Dormitory containing seven single beds each with a chair.



Upstairs washroom

Upstairs washroom Shower

Pre-Arrival

- See the main webpage for booking and location details.
- Please contact us prior to booking if you have any specific access requirements.
- Directions provided with booking.
- Bring a torch if arriving in the dark as there are no streetlights.

Approach

- Access to this cottage is direct from a good B road just off the main A5.

Arrival & Parking Facilities

- The key to your Bunk House will be in a key safe to the left of the main door. The combination will need to be entered to open the key safe (the button for each number must click). The same combination code then needs to be entered a second time to enable the key safe to be closed.

-
- Rear garden area with washing line, picnic tables and BBQ. The large front parking area has gravel surface.

Steps to entrance



Getting in (and out) of the Bunkhouse.

- There is a step of 6cm from the car park up to the stone flag stones.
- The step into the entrance is 20cm.
- The front door has a clear opening width of 114cm.

Getting around the cottage



Main Seating Area



Access to downstairs washrooms and Dorm

Ground floor:

- Level access from front door to the right is the lounge containing sofas and chairs which have a height to seat level of 45cm.
- Carry on through the seating area is a door with a width of 67cm.
- Through the door lies the washrooms for the lower sleeping area. The shower doors open to a width of 72cm, the toilet doors open to 67cm. The wash hand basins are 85cm in height. The shower rooms are flat access with no steps and the toilet seats are 45cm high.
- Continue through the wash area and a door of 69cm opening width leads to the ground floor sleeping area.
- Through the door are two steps each of 18cm in height which open onto the sleeping area. This contains ten bunk beds of which the lower bunk mattress level is 45cm and the top bunk is 150cm.
- There is a fire door in the dorm which is 115cm when open.
- Going back to the entrance, turn left down a step of 20cm to the dining area. In the dining area there is a very large wooden table, the top is 70cm high and bench seating at a height of 45cm, there are also a number of cushioned occasional chairs with a seat height of 50cm.
- Continue through the open space and we enter the kitchen area.
- The kitchen worktops are 90cm high as is the cooker and the sink.
- Also on the ground floor is a drying room accessed through two sets of doors with an open width of 82cm there you will find a butlers sink 90cm high and a washer and a dryer each under a worktop 94cm high.



Downstairs Dorm Fire Exit



Downstairs Dorm Bunk Beds



Downstairs washroom sinks



Downstairs washrooms showers



Downstairs washroom toilets



Ground floor Washer, Dryer, Butler's sink

Lower Ground floor:

- Accessed from the kitchen through a door with an open width of 75cm are two steps with a depth of 16cm each and a small hallway.
- To the right is a door, 72cm open width, into the single bedroom.
- Bed height 50cm high, there is also a shower with level access a wash hand basin of 80cm high and a toilet 45cm high. Also in the room is a fire exit which is 85cm open width.



Lower ground floor access.



Lower Ground floor fire escape



Lower Ground Floor toilet.

First floor:

- Going back to the entrance looking straight ahead and just to the right is the staircase leading to the first floor. The staircase has 12 steps each measuring 18cm high.
- Though a door at the top of the stairs which opens to 80cm, is the washrooms for the upstairs dorm.
- The washrooms consist of toilets which have open door width of 61cm and seat height of 40cm.

National Trust

- There are four wash hand basins which are 85cm high and two showers which have doors opening width 61cm and a step up into the shower of 10cm.
- Through the washrooms and up four steps of 20cm each to enter the upstairs dorm through a door opening width of 70cm.
- In the sleeping area we find seven beds of a height of 50cm each with a chair with seat height of 45cm.
- At the end of the area is a fire exit with opening width of 80cm this opens to a flight of stone steps leading into the garden. Each step being of natural materials varies in height, but the flight can be judged as 'steep'.



Upstairs access stairs



Upstairs washroom



Upstairs Showers



Upstairs outside fire escape

Sitting Area

- Two sofas.
- Five chairs.
- A coffee table.

Kitchen

- Good range of kitchen base and eye level units.
- Electric cooker.
- Two fridges with freezer section, two large electric toasters, an electric kettle and electric water boiler.

Dining Room

- Two large wooden tables with four benches.
- Four occasional chairs.
- One dresser.



Clockwise from top left; - Seating area, Kitchen and Dining area.

Ground Floor Sleeping area

- Ten bunkbeds.
- Five folding chairs
- One other chair

First Floor Sleeping area

- Seven single beds.
- Seven folding chairs.
- Two other chairs.

Lower Ground Floor Bedroom

- One single bed.
- One chair.

Bathrooms (Each)

- Two showers.
- Two toilets.
- Four sinks with mirrors over.

Outside/Garden

- Three picnic benches.
- One brick-built BBQ.
- A clothesline.
- Large, grassed area.
- Large parking area.

Additional Information

- Due to the proximity of a major road, dogs are not permitted at this property.
- In the event of a fire, it is the responsibility of the guests to evacuate the building. Vibrating fire/ smoke detectors are available if requested at time of booking. Please contact us if you have any other specific access requirements in this respect.

Specialist equipment

Other specialist equipment such as wheelchairs, bath seats, toilet frames etc may be available for loan or purchase from the local Red Cross loan centre. Please check this out before booking the Cottage and contact us if you require further information.

<http://www.redcross.org.uk/standard.asp?id=89425>

Future Plans to improve Access to National Trust Holiday Accommodation

- We are currently in the process of writing accessibility guides for all our holiday cottages and bunkhouses and improving access over time for all our guests. All feedback is very helpful in informing us of ways in which we can improve access. We welcome any comments or ideas from you about access at this cottage and thank you for taking the time to do this. Please do this in the most convenient way for you. See contact details below or information on website.

About the Accessibility Guide

- This Accessibility Guide is intended to provide key information about the accommodation that may be particularly relevant to guests with disabilities. Please contact us prior to booking if you would like information that is more specific and we will be happy to oblige.
Email: cottages@nationaltrust.org.uk
Phone: 0344 8002070

Access for All at the National Trust

- The Access for All office works to improve access at all National Trust accommodation and properties. The office welcomes comments and ideas on improving access.
Phone: 01793 818531
Email: accessforall@nationaltrust.org.uk

Date Jun 2021

Document reviewed 06/05/22

Document 2nd Review 19/02/23