

National Trust Bunkhouses Accessibility Guide (Sept '19)

Ilam Bunkhouse

Ilam Park,
Ilam,
Ashbourne,
Derbyshire,
DE6 2AZ

Ref:

Introduction

- Ilam Park is surrounded by limestone hills, meandering rivers and woodland, providing a superb base to discover the Peak District.
- There are many walks in the local area including the famous stepping stones in the Dovedale Valley, which are only a 20-minute walk from the park.

The bunkhouse is arranged as follows;

- The hallway (with payphone, noticeboard & fire alarm panel), 3 x shower rooms with wash basins and wc's), washing machine and drying rack are all located on the ground floor.
- On the first floor there are three bunk bedrooms with wash hand basins (Manifold sleeps 6, Dove sleeps 6 and Hamps sleeps 4), a separate toilet, hallway, cleaning cupboard and kitchen/lounge/dining area.

Pre-Arrival

- See main webpage for booking and location details.
- Please contact us direct prior to booking if you have any specific access requirements.
- Directions provided with booking.
- Access statement for the rest of Ilam Park is available on the main webpage.

Approach

- The approach to Ilam is via country lanes which can be narrow. There are steep roads into the valley towards the village of Ilam. The approach to Ilam Park and the main visitor car park is via a tarmac driveway.

Arrival & Parking Facilities

- Parking is in the main Ilam Park Car Park.
- The original car park has hard standing capacity for 75 vehicles including 5 accessible parking bays. The surface is tarmac.
- Our new car park has additional parking for up to 140 vehicles. The bays are stone and the roadways tarmac with chip surface dressing.
- National Trust members park free of charge.
- 4 parking passes are provided free of charge per bunkhouse booking.
- Additional vehicles are charged at standards parking rates.
- Access from the car park is on largely flat smooth surfaces.
- A tarmac access path takes you from the Car Park to the bunkhouse entrance.
- The path is approx. 70 metres long and 1.5m metres wide.
- A pathway leads from the main path up two steps which are 74.5cm wide.
- The first step is approx. 20cm high. The second step is 18cm high.
- The pathway is 9 metres long and leads to the bunkhouse door.
- A torch is recommended if arrival after nightfall as the site can be quite dark.



Getting in & out of the bunkhouse

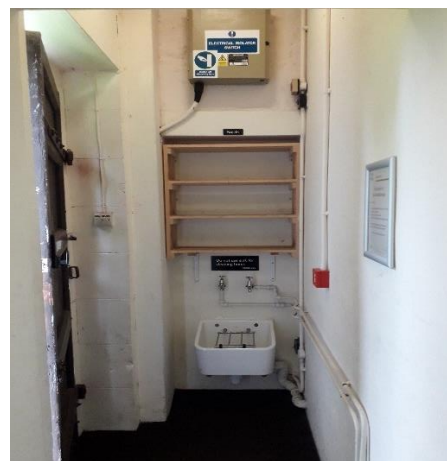
- A key code entry panel is situated on the right-hand side of the main door at a height of approx. 1.4 m from floor level.
- A door bell is positioned on the door frame at a height of 1.65m above floor level.
- A step is at the door threshold which is approx. 14cm high.
- The door width is 77cm.
- An external light is positioned above the entry door which is on a light sensor and timer.
- The main light switch is inside the main hallway to the right.



Getting around the bunkhouse

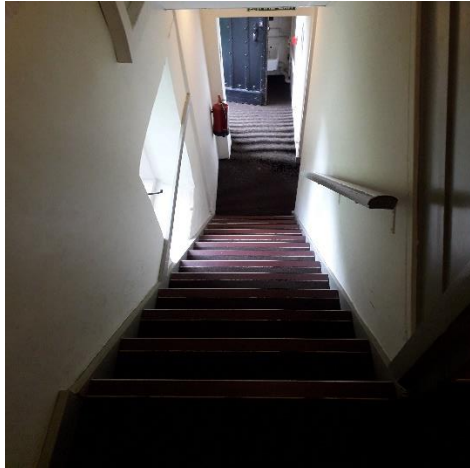
Entrance Hallway

- The entrance hallway contains a low-level sink with mains water. The sink is 60cm from floor level. The taps are 90cm from floor level.
- There are boot storage racks above the low-level sink at shelving height from 1.24m to 1.74m.
- There is an electrical box above the boot storage racks at a height of 2.62m from floor level.
- The entrance hallway 3.68 m long at the longest point and 0.77m wide at the narrowest point.
- The hallway has brown commercial carpet that is wide ridged in texture.
- There is a pay phone 1.25 m from floor level.
- The main fire alarm panel for the bunkhouse and stable block building is in the main hallway and is 1.4 m from ground level.
- A noticeboard is approx. 1.5 metres from ground level.



Staircase

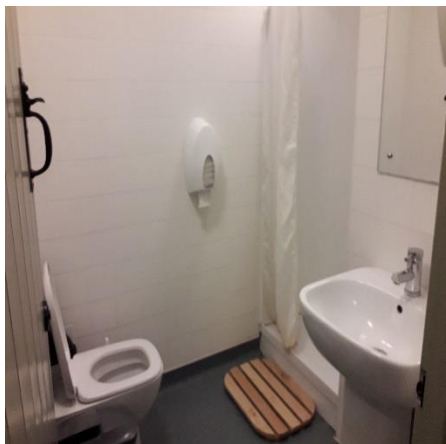
- The hallway leads to the main staircase which consists of 13 steps up to a small landing area, before the stairs come back on themselves up a further 5 steps.
- The steps all measure 78cm wide by 20.5cm high.



Ground Floor

Shower Rooms

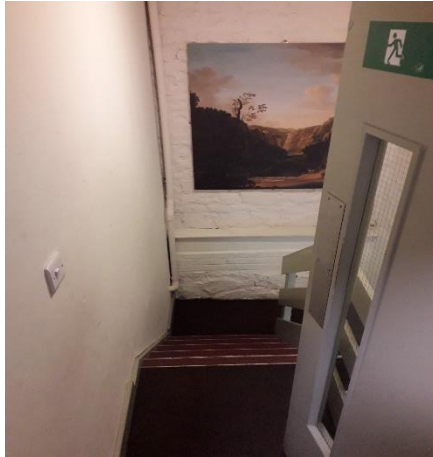
- The shower rooms consist of a central area measuring 2.6m x 2.15m at the widest points.
- There is a wooden post in the central area which makes the narrowest point in the room 77cm wide.
- The flooring in the main room and shower rooms is commercial non-slip vinyl.
- Off the main area are three separate shower rooms, with w.c., wash basin and shaving light.
- The shower rooms have internal locks.
- There is a step of 18cm into each shower cubicle.
- There is a wooden standing available matt in each shower room, which are 5cm above floor level
- Two of the shower room doors have an entrance of 78cm wide.
- One shower room has an entrance of 77cm wide.
- The right-hand shower room measures approx. 1.28m x 1.5 m (excluding shower cubicle but including WC and sink).
- The middle shower room measures approx. 1.6m x 1.4 m (excluding shower cubicle but including WC and sink).
- The left-hand shower room measures approx. 1.6 m x 2.0m (including shower cubicle, WC and sink).
- Just off the main area is a drying rack cupboard with a washing machine.
- The cupboard is opening via double doors that open inwards into the main area.
- There 15 hooks 1.8 m from floor level.
- There is a boot rack 66cm from floor level and a drying rack that hangs 145cm above floor level.



First Floor

Hallway

- The first-floor hallway is accessed through a self-closing fire door which is 71.5cm in width.
- The flooring is narrow ridged commercial carpet.
- The hallway at its narrowest is 88cm in width.
- Off the hallway is a small cleaning cupboard, three bedrooms, a separate w.c. and the lounge/kitchen/dining room.
- The light switch is just inside the door and is 115cm from floor level.



Bedrooms

Manifold Bedroom

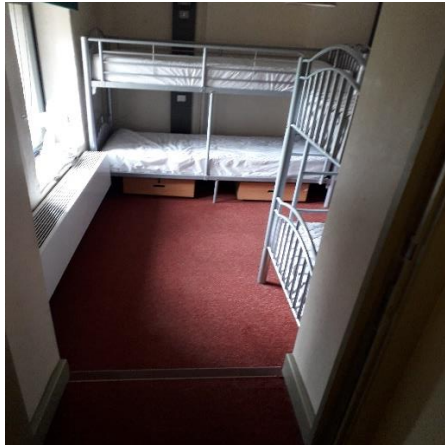
- This bedroom contains 3 metal bunk beds with mattress and mattress cover and sleeps 6 people.
- It contains a self-closing fire door and is 72cm in width.
- The bottom bunks are 54 cm from floor level to the top of the mattress.
- Attached ladders with two steps provide access to the top bunks.
- The first step on the ladder is 62cm from floor level.
- There is a gap of 29 cm between steps.
- The top bunk is 142cm from floor level to the top of the mattress.
- Each bunk has a reading light and plug socket next on the wall next to the bed.
- The room has a wash hand basin that is 86 cm from floor level.
- There is a mirror above the basin and a shaving light above the mirror. The shaving light is 164 cm from floor level.
- The flooring is low pile commercial carpet.
- There are two storage boxes under each bed which can be locked using a padlock (not provided).
- The window is covered by a window blind.
- There are 6 coat hooks around the room, which are approx. 160 cm above floor level.
- Fans are provided for cooling the room in warming weather.
- Heating is provided through underfloor heating from an air source heat pump.
- Additional heating is providing through an electric radiator.
- A fire escape is accessed via a break glass system. The escape uses an alternative staircase which has 19 steps in total of varying dimensions. The largest drop is the first step which is 26.5 cm. The first 5 steps are 1 metre wide and then combine with the second set of stairs. The width of the next 12 steps are 90cm. The last 2 steps are through a doorway which measures 84cm wide.
- The emergency exit comes out in the main stable yard courtyard, which has flat paving flags around a cobbled courtyard area.
- Emergency lighting is provided throughout the bunkhouse.
- The bedroom can be locked from the inside.
- The light switch is just inside the door and is 115cm from floor level.



Dove Bedroom

- This bedroom contains 3 metal bunk beds with mattress and mattress cover and sleeps 6 people.
- It contains a self-closing fire door, which is 71cm in width.
- There is 1 step on entry to the bedroom which is 76cm wide and 23cm in height.
- The bottom bunks are 54 cm from floor level to the top of the mattress.
- Attached ladders with two steps provide access to the top bunks.
- The first step on the ladder is 62cm from floor level.
- There is a gap of 29 cm between steps.
- The top bunk is 142cm from floor level to the top of the mattress.
- Each bunk has a reading light and plug socket next on the wall next to the bed.
- The room has a wash hand basin that is 86 cm from floor level.
- There is a mirror above the basin and a shaving light above the mirror. The shaving light is 164 cm from floor level.
- The flooring is low pile commercial carpet.
- There are two storage boxes under each bed which can be locked using a padlock (not provided).
- The window is covered by a window blind.
- There are 6 coat hooks around the room, which are approx. 160 cm above floor level.
- Fans are provided for cooling the room in warming weather.
- Heating is provided through a fan radiator.
- Additional heating is providing through an electric radiator.

- A fire escape is accessed via a break glass system. The escape uses an alternative staircase which has 18 steps in total of varying dimensions, but which are approx. 20cm in drop. The first 3 steps are through another door and at an angle. They are 84cm wide, but the depth varies from 3cm at the narrowest point to 36cm at the widest point due to the angle. The escape then combines with the second set of stairs. The width of the next 12 steps are 90cm. The last 2 steps are through a doorway which measures 84cm wide.
- The emergency exit comes out in the main stable yard courtyard, which has flat paving flags around a cobbled courtyard area.
- Emergency lighting is provided throughout the bunkhouse.
- The bedroom can be locked from the inside.
- The light switch is just inside the door and is 115cm from floor level.



Hamps Bedroom

- This bedroom contains 2 metal bunk beds with mattress and mattress cover and sleeps 4 people.
- It contains a self-closing fire door, which is 72cm in width.
- The bottom bunks are 54 cm from floor level to the top of the mattress.
- Attached ladders with two steps provide access to the top bunks.
- The first step on the ladder is 62cm from floor level.
- There is a gap of 29 cm between steps.

- The top bunk is 142cm from floor level to the top of the mattress.
- Each bunk has a reading light and plug socket next on the wall next to the bed.
- The room has a wash hand basin that is 86 cm from floor level.
- There is a mirror above the basin and a shaving light above the mirror. The shaving light is 164 cm from floor level.
- The flooring is low pile commercial carpet.
- There are two storage boxes under each bed which can be locked using a padlock (not provided).
- The window is covered by a window blind.
- There are 4 coat hooks around the room, which are approx. 160 cm above floor level.
- Fans are provided for cooling the room in warming weather.
- Heating is provided through underfloor heating from an air source heat pump.
- Additional heating is providing through an electric radiator.
- Emergency lighting is provided throughout the bunkhouse.
- The bedroom can be locked from the inside.
- The light switch is just inside the door and is 115cm from floor level.



WC

- The door to the WC is 71cm in width.
- The door can be clocked from the inside.
- There is a wash hand basin 86 cm from floor level.
- There is a mirror above the wash hand basin.
- There is a toilet 43 cm above floor level.
- The internal room dimensions are 151cm x 93cm (including the toilet).
- There is an extractor fan button in the Hallway, which is 219cm above floor level.
- The flooring is commercial non-slip vinyl.
- The light switch is in the hallway and is 115cm above floor level.



Lounge/Kitchen/Dining Area

Lounge

- The light switch is just inside the door and is 115cm from floor level.
- The lounge contains two large sofas. Each is 43cm high to the bottom of the seating cushion.
- The flooring is narrow ridged commercial carpet.
- The window is covered by a blind.
- Mood lighting is provided by two lampshades in the corners. The switches are 130cm from floor level.
- Books and games are available for use at ground level and on the low-level window sill which is 48cm from floor level.
- Lighting is provided by overhead lamp shades.



Kitchen

- Lighting is provided by overhead lamp shades.
- Additional lighting is provided by the extractor hood lamp and the under-cupboard lighting.
- The kitchen contains an electric oven with two ovens and a grill. It also has a 5-ring electric hob. The hob and work surfaces are 93cm above floor level.
- Other equipment provided are Electric 4-piece toaster, electric kettle, water boiler (125cm from floor level), dishwasher, microwave (140cm from floor level), coloured chopping boards, fridge/freezer unit, pedal operated waste bins, utensils and cutlery drawers and crockery, pan and food storage cupboards.
- A first aid kit is provided and is stored above the water boiler 170cm above floor level.



Dining Area

- There are two large wooden dining tables measuring 120cm wide by 183cm long.
- Each table has two bench style seats per table. The seats do not have arms or back supports and are 46cm from floor level.
- The window is covered by a blind.
- Lighting is provided by overhead lampshades.
- The main fuse box is in the dining area and is 205cm above floor level.



Garden

- There is no allocated garden area for the bunkhouse, however guests are welcome to explore the 158 acres of Ilam Park.

Future Plans to improve Access to National Trust Holiday Cottages

We are currently in the process of writing accessibility guides for all our holiday cottages and improving access over time for all our guests. All feedback is very helpful in informing us of ways in which we can improve access to all our cottages. We welcome any comments or ideas from you about access at this cottage and thank you for taking the time to do this. Please do this in the most convenient way for you. See contact details below or information on website.



About the Accessibility Guide

This Accessibility Guide is intended to provide key information about the cottage that may be particularly relevant to guests with disabilities. It is reviewed annually. Please contact us prior to booking if you would like more detailed information and we will be happy to oblige.

Phone: 0344 800 2070

Email: cottages@nationaltrust.org.uk

Access for All at the National Trust

The Access for All office works to improve access at all National Trust cottages and properties. The office welcomes comments and ideas on improving access.

Phone: 01793 818531

Email: accessforall@nationaltrust.org.uk