

# National Trust

## National Trust Cottages Accessibility Guide

Ivy's Cottage  
Selworthy Green  
Nr Minehead



Property Ref 003024

### Introduction

Ivy's cottage is a small thatched property located in the village of Selworthy and is part of the wider Holnicote Estate

It is a cosy cottage sleeping up to 2 people in 1 bedroom. The rooms are all located on the ground floor but there are steps up to the bedroom and down into the shower room. There is limited storage space.

The property is heated by night storage heating and there is a wood burner.

There is no direct vehicle access and parking, but access is via a short path from a steep lane.

The Cottage is arranged as follows:

### Ground floor

Entrance porch, sitting room with wood-burning stove, small kitchen, double bedroom (with 5' bed) and shower room.

### Pre-Arrival

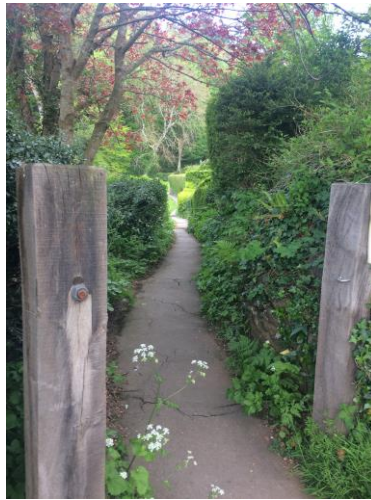
- See the main webpage for booking and location details.
- Please contact us prior to booking if you have any specific access requirements.
- Directions provided with booking

### Approach

- The property is approached via a steep lane and access through a gate 1100mm wide and along a tarmacked footpath lined 900mm in width and lined with hedges.

## Arrival & Parking Facilities

- There is no parking at the property. Parking is available in a nearby car park and a short walk down the steep lane
- It is possible to pull in at the gate to the footpath in order to unload some 30m from the property
- If arriving after dark it is advisable to have a torch.



## Getting in (and out) of the cottage

- 2 stone steps up to porch area, step heights 120mm & 130mm, tread 470mm
- Porch entrance width 900mm and internal area of 1080mm by 1150mm
- Side porch seating, seat height 460mm
- Key box 1580mm high to the left
- Front door width 810mm, opening into open plan living room/kitchen
- Outdoor lighting



## Getting around the cottage

The cottage is cosy, circulation and storage is limited.

The property is all on one floor with internal steps up to the bedroom and down into the bathroom. Flooring is a combination of tiles, wooden floorboards, linoleum and rugs with anti-slip underlay.



## Kitchen Area

- Entrance to kitchen area, width 630mm. Space between kitchen sink and breakfast bar/worktop 630mm
- Flooring is stone with a level wood threshold
- Height of worktop 920mm
- Compact fitted kitchen with pantry cupboard area, electric double oven with ceramic hob, fridge/freezer, microwave
- Sink with mono-block tap with ceramic washers
- Windows with views over village green and to thatched cottage beyond
- Ceiling track lighting with 3 x spotlights



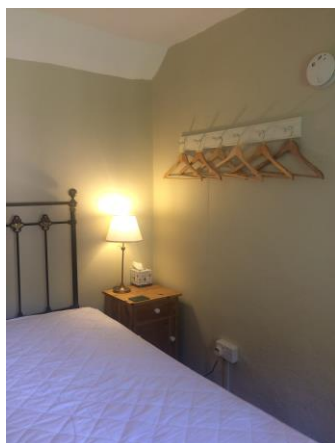
## Open Plan Sitting Room

- Tile floor and rug with anti-slip underlay
- Wood burner
- 1 x 2 seater settee, seat height 360mm
- Low level window with views over the lane and estate beyond
- 3 x wall lights, 2 x table lamps with switch on the cable, 1 x floor lamp, switch under lampshade
- Table height 760mm, space underneath height 600mm ,
- 1 x wooden chair, seat height 440mm,
- Window seat, seat height 450mm



## Double Bedroom

- 3 x steps up to bedroom, step heights 120mm, 150mm, 190mm, treads 260mm & 290mm.
- Handrail 700mm from the floor
- Door width 760mm with Suffolk latch
- Wooden floorboards with 3 x rugs with anti-slip underlay
- Double bed width 1500mm, length 2000mm. Height 710mm, space underneath 380mm
- Side tables with table lamps, switches under lampshade
- Low level window with views over green to thatched cottage and Exmoor beyond
- Wooden chair, seat height 430mm
- Wall hooks with hangers 1700mm high



## Bathroom

- Door width 610mm, Suffolk latch
- 2 x steps down, 110mm & 170mm, tread 340mm
- Linoleum floor
- Corner toilet, height 420mm, push flush
- Electric shower cubical 900mm by 800mm. Step up 170mm. Folding door screen
- Sink height 840mm, mixer tap with twist taps with ceramic washers
- Mirror over basin with light and shaver socket, height 1870mm
- Window and ceiling light
- Circulation limited between shower and wall heater 720mm



## Utility

- Door width 720mm, level threshold
- Back door width 850mm leading to wood store
- Washer/Dryer

## Garden

- Access to the garden is via the front door and a side gate width 890mm
- Small garden with a gravelled area and lawn surrounded by shrubs
- Sloping path to seating area, width 480mm
- Table, height 790mm, 2 x chairs, seat height 420mm





## Additional Information

- Assistance dogs are welcome at all our cottages
- In the event of a fire, it is the responsibility of the guests to evacuate themselves. Vibrating fire/smoke detectors are available if requested at time of booking. Please contact us if you have any other specific access requirements in this respect.

## Facilities at all cottages

The National Trust aims to expand the list of accessible /equipment/items available at each cottage and these may include

- Cordless kettle
- Hollowfibre bedding
- Chair with armrests
- Good reading light
- Large handle vegetable peeler
- Easy tin opener
- Non-slip mat for bath/shower
- Non-slip place mat
- Easy jar opener
- Information in alternative formats (on request)

Please note that we cannot guarantee that all items will be available at the time of your visit. Please enquire at the time of booking regarding any particular requests.

## Specialist equipment

Other specialist equipment such as wheelchairs, bath seats, toilet frames etc may be available for loan or purchase from the local Red Cross loan centre. Please check this out before booking the Cottage and contact us if you require further information.

<http://www.redcross.org.uk/standard.asp?id=89425>

## Future Plans to improve Accessibility to National Trust Holiday Cottages

We are currently in the process of writing Accessibility guides for all our holiday cottages and improving access over time for all our guests. All feedback is very helpful in informing us of ways in which we can improve access to all our cottages. We welcome any comments or ideas from you about access at this cottage and thank you for taking the time to do this. Please do this in the most convenient way for you. See contact details below or information on website.

## About the Accessibility Guide

This Accessibility guide is intended to provide key information about the cottage that may be particularly relevant to guests with disabilities. It is reviewed annually. Please contact us prior to booking if you would like more detailed information and we will be happy to oblige.

Phone: 0344 800 2070

Email: [cottages@nationaltrust.org.uk](mailto:cottages@nationaltrust.org.uk)

## Access for All at the National Trust

We continue to work to improve accessibility at all our holiday cottages. We welcome comments and ideas on improving access.



Phone: 0344 800 2070

Email: [cottages@nationaltrust.org.uk](mailto:cottages@nationaltrust.org.uk)

Date 10 June 2018