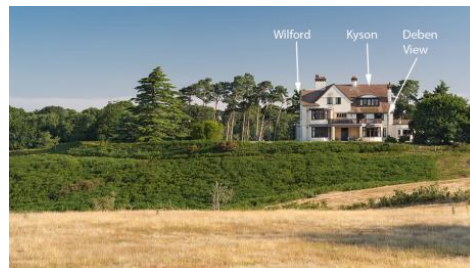


National Trust Cottages Accessibility Guide

Kyson, Tranmer House, Sutton Hoo, Ref. 010039

Introduction

- One of two second-floor apartments within Tranmer House.
- Brick and timber built.
- Sleeps six in three bedrooms.
- The apartment is reached by an external staircase and then a further internal staircase.



** Please note that all door widths given indicate the clearance required for access*

The Apartment is Arranged as Follows

- Entrance door opens onto the upper hallway from which are accessed the bathroom and living room, which in turn leads to the kitchen/dining area. Steps down from the hallway on the left lead to a lower hallway, off which are located the three bedrooms and bathroom.

Pre-Arrival

- See the main webpage for booking and location details.
- Please contact us prior to booking if you have any specific access requirements.
- Directions provided with booking.
- Please bring a torch if arriving in the dark as there are no streetlights here.

Approach

- Tranmer House is accessed via a signposted and tarmacked road across the Sutton Hoo estate.
- There are two entrance barriers to drive up to the holiday apartments and the code for these will be emailed to you prior to arrival.
- There is a river bordering the estate.

Arrival & Parking Facilities

- There is a fenced gravel parking area by Tranmer House and Kyson is assigned one parking space. Additional parking is available in the main visitor car park.
- A gate 880mm wide leads from the gravel parking area, which has a concrete border, rising 40mm to cobbles, which gives way to a path.
- The uneven stone tile path leads through a gap in a further fence 920mm wide to the external stairs.
- The tiled exterior stairs are 170mm high and have anti-slip sections, a metal handrail and exterior lights. There are 5 steps up to a semi-landing, then a 90° turn left to 11 further steps up to a landing.
- The keysafe is on the external wall beside the main entrance door, 1.5m high, beneath a light and labelled with the apartment name.

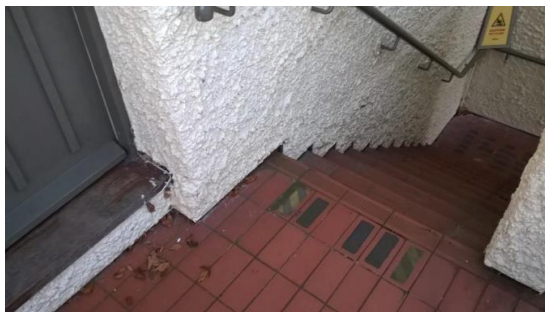
- Rubber door mat.



Entrance to gravel parking area by Tranmer House



*Gate from parking area to path to base of external steps
External steps up to apartment*



External steps up to the apartment

Keysafes at entrance to communal lobby



Communal First-Floor Lobby

- From the exterior landing there is a door 850mm wide x 211mm high which gives access over a threshold 190mm high and then 60mm down into the lobby.
- Curved, tiled fireplace hearth 960mm high.
- Wooden bureau 1140mm high.
- Three keysafes on the wall contain emergency spares beside a larger housekeeping master key safe.
- Two pendant lights on the ceiling.
- Wooden floor with one entrance mat.



- Fire alarm break panel wall mounted by the entrance door.

Internal Staircase

- Door signed to Wilford & Kyson 770mm wide x 204mm high with a threshold of 30mm high.
- Carpeted area with one pendant on ceiling and a side table 710mm high bearing the wifi router for all three apartments.
- Steps 190mm high each.
- Wooden handrail.
- Two steps up to semi-landing with North-facing window, then 90° left turn.
- Sixteen steps up with two pendants on ceiling to mini-landing, then 90° turn right.
- Three steps up to upper landing with one pendant on ceiling and door to communal second-floor lobby.



Internal staircase from the first floor to the second floor



Communal Second-Floor Lobby

- At the top of the internal staircase, this lobby gives access to Wilford and Kyson apartments.
- Door 760mm wide x 204mm high with a threshold 20mm high.
- Wooden chest 105mm high.
- One pendant light on ceiling.
- Wooden floorboards plus one rug (secured).



Main entrance to Kyson (on left) from second-floor lobby

Getting Around the Cottage

Upper Hallway – Entrance

- Wooden hallstand 840mm high to surface.
- Two pendant lights, emergency light and smoke detector on ceiling.
- Windows to bathroom providing some borrowed light; covered with blinds for privacy.
- Wooden chair 430mm to seat height x 570mm back height
- Bureau 1040mm height x 780mm wide x 450mm deep. One ornate lamp with glass shade.
- Wooden floorboards.

Lower Hallway

- Four wooden steps down of maximum height 150mm. Handrail to the left at a height of 970mm (top step) 100mm (lower level)
- Wooden chair with leather seat 460mm seat height x 650mm back height.
- One pendant light and emergency light on ceiling.
- High windows to shower room providing borrowed light.
- Carpeted.

Super-King Bedroom

- Door 680mm wide x 207mm high with a threshold 20mm high.
- Carpeted half-landing with wooden rail surround.
- Three wooden steps down to wooden floorboards each 170mm high.
- Super-king size bed 580mm high without headboard.
- Two bedside tables 770mm high each with a lamp.
- Chest of drawers with mirror 740mm high.
- Wardrobe 580mm door width x 180mm hanging height.
- Cushioned armchair 450mm seat height x 680mm back height.
- Curved tile hearth (no longer in use) 970mm high.
- Two pendant lights and smoke detector on ceiling.
- Secondary glazed window facing North over courtyard and outbuildings over the estate.
- Wooden floorboards with small bedside mats.

Shower Room

- Door 640mm wide x 198mm high.
- Shower with sliding doors with entrance 380mm wide x threshold 270mm up and then 170mm down.
- Basin height 850mm.
- Toilet seat height 410mm.
- One flush ceiling light.
- Shelf 1200mm high and towel rail 900mm high.
- Secondary glazed window facing East over the estate.
- Lino flooring.



Bedroom sloping roof can be seen to the right of the window



Shower Room



Lower hallway steps



Super King or Twin Bedroom



Double bedroom with sloping roof

Double Bedroom

- Door 770mm wide x 205mm high with a threshold 10mm up, then 30mm down.
- Double bed 600mm high without headboard.
- Bedside cabinet with a lamp 850mm high.
- Chest of drawers with freestanding mirror 780mm high.
- Tub chair 460mm seat height x 340mm back height.
- Curved tile hearth (no longer in use) 970mm high.
- In-built corner cupboard 780mm access width x 158mm hanging height.
- Sloping ceiling in one corner down to 136mm from the floor.
- Two pendant lights and smoke detector on ceiling.
- Window facing South over the estate towards the burial mounds.
- Wooden floorboards with two small bedside mats.

Twin Bedroom

- Door 790mm wide x 206mm high with a threshold down 20mm.
- Twin divan beds 580mm high without headboard.
- Two bedside cupboards each with a lamp 760mm & 770mm high.
- Wooden wardrobe 1930mm high with drawers underneath.
- Armchair 400mm seat height x 820mm back height.
- Curved tile hearth (no longer in use) with mantle 1040mm high.

- In-built cupboard 760mm access width x 150mm hanging height.
- Sloping ceiling in one corner down to 135mm from the floor.
- Two pendant lights and smoke detector on ceiling.
- Window facing South over the estate towards the burial mounds.
- Wooden floorboards with small bedside mats.



National Trust

Bathroom

- Door 790mm wide x 204mm high with a threshold 30mm high.
- Bath with shower attachment 570mm high x width 440mm at bottom x length 125mm at bottom.
- Basin with crosshead taps 830mm high.
- Toilet seat height 440mm.
- Shelf 870mm high.
- Wooden chair seat height 440mm x seat back height 400mm.
- Marble-topped wooden cabinet 760mm high.
- Three-armed pendant light on ceiling.
- Window facing South over the estate towards the burial mounds.
- Tiled flooring.
- Heated towel rail 870mm to top bar.

Living Room

- Door 770mm wide x 204mm high with a threshold 10mm up and then 20mm down.
- Two two-seater fabric sofas and 2 chairs seat height 460 & 400mm x back height 570mm.
- Two wing back armchairs seat height 430mm x seat back height 750mm.
- Fireplace (no longer in use) with oval mat in front.
- Small square side table with lamp height 650mm.
- Rectangular side table with lamp
- Large wooden box bearing TV 660mm high, with TV 900mm high to centre of the screen.
- Wooden dresser 134mm high.



Kitchen/diner – doorway to living room on left



Bathroom



Living room with door to hall - sloped ceiling



Entrance hallway with door to bathroom and living room

- Central high ceiling slopes to each side at far end of the room.
- Two lights on ceiling, one floor lamp and one table lamp.
- Smoke detector on ceiling.
- Two secondary glazed windows facing South and West across the estate and toward the River Deben.
- Wooden floorboards and one large rug.
- Coffee table 490mm.

Kitchen/Dining Area

- No door but an opening from living room is 770mm wide with a 30mm step up to tiled flooring.
- Worktop height 890mm.
- Ground and wall mounted cupboards with the latter 360mm high above worktop.
- Double oven & hob, microwave, dishwasher, washing machine, toaster, kettle and fridge/freezer.
- Wooden dining table 770mm high with 620mm knee-space.
- Six wooden chairs seat height 490mm x seat back 530mm high.
- In-built cupboard containing highchair.
- Two lights and smoke detector on ceiling.
- Wall-mounted fire extinguisher and fire blanket.
- Tiled flooring.
- Secondary glazed window facing West towards the River Deben.

Outside

- Bin store across the paved courtyard from the base of the external stairs.

Additional Information

- Assistance dogs are welcome at all our holiday cottages.
- In the event of a fire, it is the responsibility of the guests to evacuate themselves. Vibrating fire/smoke detectors are available if requested at time of booking. Please contact us if you have any other specific access requirements in this respect.

Facilities at All Holiday Cottages

The National Trust aims to expand the list of accessible /equipment/items available at each cottage and these may include:

- Cordless kettle
- Hollow fibre bedding
- Chair with armrests
- Good reading light
- Large handle vegetable peeler
- Easy tin opener
- Non-slip mat for bath/shower



- Non-slip place mats
- Easy jar opener
- Information in alternative formats (on request)

Please note that we cannot guarantee that all items will be available at the time of your visit. Please enquire at the time of booking regarding any particular requests.

Specialist Equipment

Other specialist equipment such as wheelchairs, bath seats and toilet frames etc... may be available for loan or purchase from the local Red Cross loan centre. Please check this out before booking the cottage and contact us if you require further information. <http://www.redcross.org.uk/standard.asp?id=89425>

Future Plans to Improve Access to National Trust Holiday Cottages

- We are currently in the process of writing accessibility guides for all our holiday cottages and improving access over time for all our guests. All feedback is very helpful in informing us of ways in which we can improve access to all our cottages. We welcome any comments or ideas from you about access at this cottage and thank you for taking the time to do this. Please do this in the most convenient way for you. See contact details below or information on website.

About this Accessibility Guide

- This Accessibility Guide is intended to provide key information about the cottage that may be particularly relevant to guests with disabilities. Please contact us prior to booking if you would like information that is more specific and we will be happy to oblige.

Email: cottages@nationaltrust.org.uk

Phone: 0344 8002070

Access for All at the National Trust

- The Access for All office works to improve access at all National Trust accommodation and properties. The office welcomes comments and ideas on improving access.
Phone: 01793 818531
Email: accessforall@nationaltrust.org.uk

August 2021