

## National Trust Cottages Accessibility Guide

**Lacombe  
Port Quin  
Nr. Port Isaac  
Cornwall**



**Cottage Ref: 011032**

### **Introduction**

- Lacombe is thought to be the oldest cottage in Port Quin. It is detached and enjoys a wonderful coastal location. It enjoys an elevated position and is set quietly back from the inlet with its own garden.
- The cottage is heated by eco-radiators, night store and portable oil-filled heaters. There is also a wood burning stove in an inglenook fireplace and an electric towel rail in the bathroom.
- In the event of power failure emergency lighting is provided on the landing and just inside the front door.
- There is a telephone for emergencies in the store below Guy's Cottage.

### **The cottage is arranged as follows:**

#### **Ground Floor**

- Sitting room, kitchen with dining table, steps up to bathroom and separate WC.

#### **First Floor**

- Double bedroom with a single bedroom leading off

### **Pre-Arrival**

- See the main webpage for booking and location details.
- Please contact us prior to booking if you have any specific access requirements.
- Directions provided with booking.

## Approach

- The drive down into Port Quin is relatively steep with winding lanes which can become busy during the season.

## Arrival & Parking Facilities

- Designated parking for one car is available in Port Quin car park which is approximately 100 meters away. This main car park is level and gravelled.
- The key safe is in a Caretakers store opposite Carolina Cellar. This store is below Guy's Cottage. This has a combination lock at a height of 1200mm. A bolted wooden door then opens into the store. The key safe is wall mounted immediately on the left hand side just at the top of steps down at a height of 1450mm.
- There is a sensor light above the door to this store which helps to illuminate the key safe. A torch is recommended, especially if arriving in the dark, as the numbers on the lock can be difficult to see. The key safe is operated by a combination lock mechanism, where the dials need to be turned to the cottage combination code.
- The cottage front door is illuminated with a sensor light but there is no light from the main car park.

## Getting in (and out) of the cottage

- From the main car park, there is a climb up to involving uneven ground and steps. This is part of the South West Coastal Path.
- There are three steps to the cottage gate and an uneven paved path, then a step up to the front door at a height of 80mm.
- There is a wooden threshold 150mm wide with a small up-stand of 30mm.
- The clear opening width of the stable door is 700mm.
- The light switch is on the right hand side at a height of 1400mm.



Coastal path steps



Store Containing key safe



Cottage key safes



Steps to Lacombe front gate



Close up of steps to Lacombe front gate



Lacombe entrance

## Getting around the cottage

### Ground floor

- There is a slate floor with rug in the sitting room, vinyl floor covering in the kitchen, bathroom and WC.
- There are four, vinyl covered stairs to the landing area for the bathroom and WC. The steps are 190mm high with a width of 700mm. There is no hand rail.
- There is a step into the WC which is 160mm high.
- There is a small step 20mm into kitchen.
- The minimum clear door opening widths are 680mm.



# National Trust

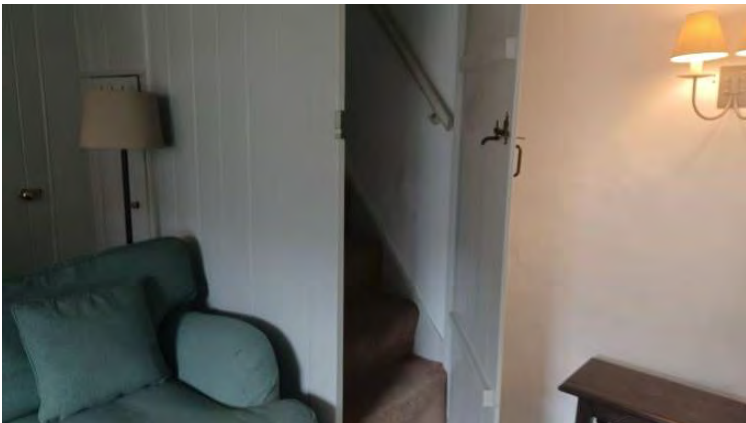
- There are 8 deep, narrow stairs to the second floor with a handrail.
- The handrail is on the right hand side and has a height of between 920mm and 1100mm from each tread.
- There is a turn on the penultimate step. The deepest step is 270mm.



Stairs from kitchen to bathroom and WC



Step into WC



Stairs to first floor accessed via door in sitting room

## First floor

- The stairs lead directly off the bedroom.
- Stairgate at top of stairs. This should be closed at night.
- Carpet throughout first floor.
- The door to the single bedroom has a clear opening width of 700mm.
- Low windows in both rooms with deep windowsills.

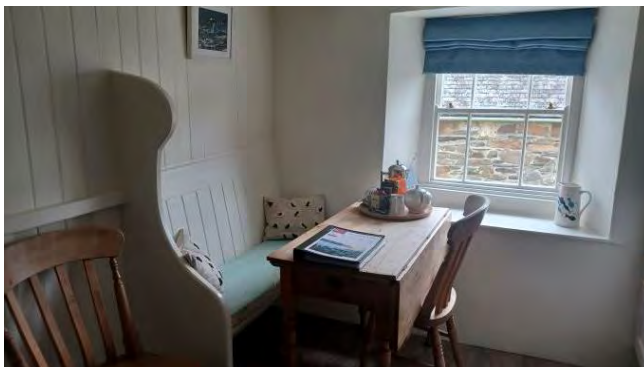
## Sitting room

- The main switch is to the right of the front door at a height of 1350mm.
- Two sets of double shaded wall lights and one standard lamp.
- Lighting inside corner cupboard.
- Two-seater sofa with seat height 500mm and back height of 430mm.
- Wing chair with a seat height of 420mm and aback height of 650mm.
- 22-inch TV with integrated DVD.
- Wood burning stove.
- Radiator.



## Kitchen

- The main light switch is to the right of the door at a height of 1350mm.
- Seven spotlights on beams and under cupboard lighting.
- Height of worktops are 880-910mm from floor level.
- Lever mixer taps over a ceramic sink.
- Built in single oven with grill and separate ceramic hob.
- Microwave, cordless kettle and toaster.
- Built-in, under-counter fridge and separate freezer.
- Washing machine with integrated dryer.
- Slimline dishwasher.
- Dining table with built-in bench seating (510mm seat height)
- Dining table has a knee clearance of 600mm. There is limited circulation space.
- Two wooden chairs (490mm seat height).





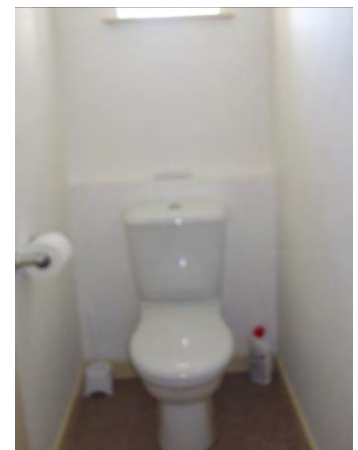
## Bathroom

- The light pull is to the right of the door at a height of 1200mm.
- Four Recessed ceiling spot lights.
- Standard size bath with integral handrails, twist taps and anti-slip base.
- The height of the bath is 540mm.
- Electric shower over the bath with controls at a height of 1350mm.
- Hand basin at a height of 830mm and with twist taps.
- Electric ladder type heated towel rail.
- Large mirror with shaving point below.
- Small wooden stool.



## Separate WC

- The light switch is to the left of the door at a height of 1270mm.
- Central ceiling light.
- The height of the WC is 400mm.



## Double bedroom

- The main light switch is on the right at the top of the landing at a height of 1340mm.
- Central, pendant light fitting.
- 5ft iron bedstead.
- The mattress is 1520mm wide x 1900mm long x 650mm high.
- There is a clearance of 400mm below the bed.
- Bed positioned slightly off-centre. Clearance of 500mm on one side.
- Two bedside cabinets with bedside lamps.
- Four-drawer chest with wall mirror.
- Wooden chair with a seat height of 460mm and a back height of 430mm.
- Double wardrobe with rail at 1500mm from floor level.
- Night storage heater.



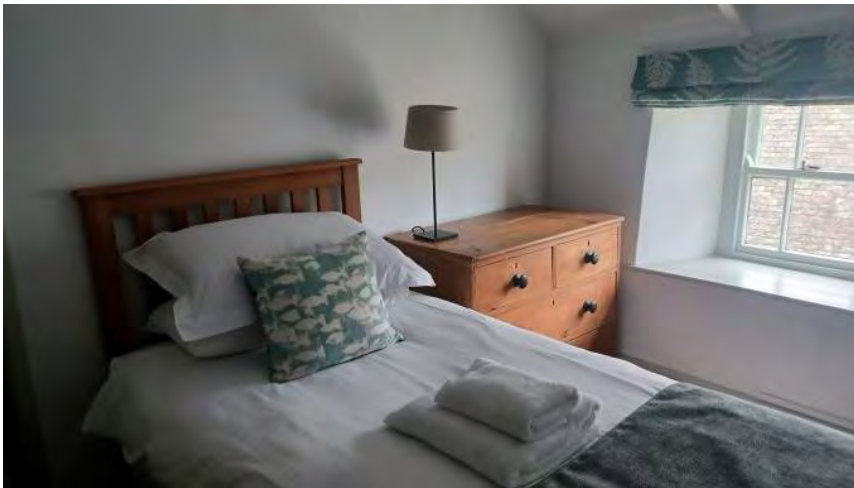
*Stairs down direct from double bedroom with hinged stairgate at top*

*Picture also shows door to interconnecting single bedroom*



## Interconnecting single bedroom

- The main light switch on the right of the bedroom door at a height of 1350mm.
- Central pendant light fitting.
- Single bed 970mm wide x 2000mm long x 650mm high.
- The clearance below the bed is 50mm.
- The gap at the end of the bed is 400mm between the bed and the wall.
- Four-drawer chest with bedside light.
- Wardrobe with rail at 1650mm from floor level.
- Wooden chair with a seat height of 420mm and a back height of 380mm.
- Full-length wall mirror.



## Garden

- On a higher level of ground on uneven slates, there is a wooden garden table and four armed wooden chairs.
- The knee clearance on the table is 660mm and the chairs have a seat height of 440mm and a back height of 460mm.
- There are steps to access the garden table and chairs.
- There is a level lawn in front of the cottage.





## Additional Information

- Assistance dogs are welcome at all our cottages
- In the event of a fire, it is the responsibility of the guests to evacuate themselves. Vibrating fire/smoke detectors are available if requested at time of booking. Please contact us if you have any other specific access requirements in this respect.
- There is no mobile phone signal in Port Quin.
- Carpets are 80/20 wool/man-made fibres.
- Duvets and pillows are made of hollowfibre.
- Cushions are hollowfibre or man-made.

## Facilities at all cottages

In addition to the standard equipment and facilities, each cottage is equipped with the following:

- Chair with armrests in sitting room.
- Good reading light.
- Non-slip mat for bath/shower.
- Information in alternative formats (on request).

We aim to provide these items in all cottages but please check when booking as to their availability and to check if new items have been added to the list.

## Specialist equipment

Other specialist equipment such as wheelchairs, bath seats, toilet frames etc may be available for loan or purchase from the local Red Cross loan centre. Please check this out before booking the Cottage and contact us if you require further information.

<https://www.redcross.org.uk/get-help/borrow-a-wheelchair>

<https://www.redcross.org.uk/get-help/hire-a-toilet-aid>

## Future Plans to improve Access to National Trust Holiday Cottages

- We are currently in the process of writing accessibility guides for all our holiday cottages and improving access over time for all our guests. All feedback is very helpful in informing us of ways in which we can improve access to all our cottages. We welcome any comments or ideas from you about access at this cottage and thank you for taking the time to do this.



Please do this in the most convenient way for you. See contact details below or information on website.

### **About the Accessibility Guide**

- This Accessibility guide is intended to provide key information about the cottage that may be particularly relevant to guests with disabilities. Please contact us prior to booking if you would like information that is more specific and we will be happy to oblige.

Email: [holiday.enquiries@nationaltrust.org.uk](mailto:holiday.enquiries@nationaltrust.org.uk)

Phone: 0344 800 2070

### **Access for All at the National Trust**

- The Access for All office works to improve access at all National Trust cottages and properties. The office welcomes comments and ideas on improving access.

Phone: 01793 818531

Email: [accessforall@nationaltrust.org.uk](mailto:accessforall@nationaltrust.org.uk)

February 2023