

National Trust Cottages Accessibility Guide Template (January 2023)

Little Milford Lodge
Little Milford
Haverfordwest
Pembrokeshire
SA62 4ET

Ref: 013016



- Little Milford Lodge is a single storey 2-bedroom cottage on a hillside in a secluded woodland location with views over the Cleddau River from the garden.
- The Cottage is on one level throughout.
- It comprises a twin bedroom, double bedroom, bathroom with shower over bath, separate WC, sitting room, utility room and kitchen/dining room.

Pre-Arrival

- See the main webpage for booking and location details.
- Please contact us prior to booking if you have any specific access requirements.
- Directions provided with booking
- Bring torch if arriving in dark as there are no streetlights here

Approach

- The Cottage is approached via a steep and narrow road from the main road and a rough woodland track.

Arrival & Parking Facilities

- There is parking for two cars directly beside the cottage gate. The parking area has a slightly loose surface and is slightly sloping.

Getting in (and out) of the cottage

- Three shallow steps at the gate of 2¾" - 3½" (70-90mm) in height.
- Level concrete path round the side of the cottage to the front door.
- Key safe to left of front door.
- One step of 4¼" (110mm) at the front door
- Front door has clear opening width of 26" (660mm).
- Back door is slightly further along on same path and has step of 6½" (165mm) high.
- French Windows from kitchen/dining area into garden have step of 9" (230mm).



Getting around the cottage

- Level access throughout the cottage
- Laminated flooring in hallway, bedrooms and sitting room and vinyl flooring in kitchen, WC and bathroom.
- All internal doors are 720mm wide.
- Corridors 750-1200mm wide with 90 degree turn left and right from hallway to all rooms.



Hallway



Corridor



Kitchen/Dining Room

Kitchen/Dining Room

- Good circulation space
- Height of worktops is 900mm
- Electric cooker, dishwasher and fridge
- Microwave, toaster and cordless kettle.
- Track spot lighting overhead, and strip light under wall units.
- Separate utility room off sitting room
- Pine kitchen table and chairs.
- Table has 710mm clear space underneath

Bathroom

- Basin and bath with shower over bath.
- Bath is 1700mm long, 515mm high and 690mm wide.
- The space beside the bath is 1000mm wide.
- The bath has integral grab handles to either side.
- There is an electric shower over the bath
- The basin is 810mm high.



Bathroom



WC

WC

- The WC is 425mm high
- The room is 1800mm long

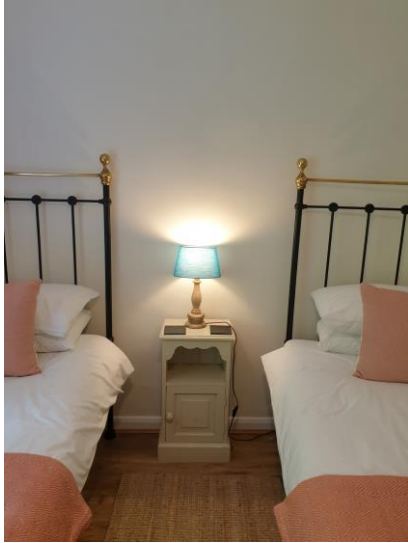
Sitting Room

- One two-seater sofa with seat height of 420mm
- Two winged armchairs with seat height of 420mm
- Open fire
- CD and Radio player. TV and DVD.
- One central light, one standard lamp, one table lamp. All with led bulbs.
- Door to utility room and back door.



Twin Bedroom

- Two single beds
- Firm mattresses – 300mm/3' wide
- Bed height 600mm
- Mattress length – 1930mm (6' 4")
- Both beds have bedside table with lamp



Twin Room



Double Room

Double Bedroom

- Double bed 1530mm/5' wide x 1980mm/6'6" long
- Bed height 600mm/23½".

Utility Room

- Washing machine, tumble dryer, ironing board
- Back door

Garden

- Level concrete path round cottage to garden from front door.
- 9" (230mm) step out from kitchen/dining area into garden.
- Main garden area is flat and laid to grass
- Wooden table and two benches on grass. Bench on path.

Additional Information

- Air source heating
- Open fire with sufficient fuel to get it started. Further fuel to be obtained by guests.
- Assistance dogs are welcome at all our cottages
- In the event of a fire, it is the responsibility of the guests to evacuate themselves. Please contact us if you required any specific access requirements in this respect.

Facilities at all cottages

The National Trust aims to expand the list of accessible /equipment/items available at each cottage and these may include

- Cordless kettle
- Hollowfibre bedding
- Chair with armrests
- Good reading light
- Large handle vegetable peeler
- Easy tin opener
- Non-slip mat for bath/shower
- Non-slip place mat
- Easy jar opener
- Information in alternative formats (on request)

Please note that we cannot guarantee that all items will be available at the time of your visit. Please enquire at the time of booking regarding any particular requests.

Specialist equipment

Other specialist equipment such as wheelchairs, bath seats, toilet frames etc may be available for loan or purchase from the local Red Cross loan centre. Please check this out before booking the Cottage and contact us if you require further information.

<http://www.redcross.org.uk/standard.asp?id=89425>

Future Plans to improve Access to National Trust Holiday Accommodation

- We are currently in the process of writing accessibility guides for all our holiday cottages and bunkhouses and improving access over time for all our guests. All feedback is very helpful in informing us of ways in which we can improve access. We welcome any comments or ideas from you about access at this cottage and thank you for taking the time to do this. Please do this in the most convenient way for you. See contact details below or information on website.

About the Accessibility Guide

- This Accessibility Guide is intended to provide key information about the accommodation that may be particularly relevant to guests with disabilities. Please contact us prior to booking if you would like information that is more specific and we will be happy to oblige.
Email: cottages@nationaltrust.org.uk
Phone: 0344 8002070

Access for All at the National Trust

- The Access for All office works to improve access at all National Trust accommodation and properties. The office welcomes comments and ideas on improving access.
Phone: 01793 818531
Email: accessforall@nationaltrust.org.uk

Date 16th January 2023