

National Trust Cottages Accessibility Guide

Little Thorington, Stoke-by-Nayland, Ref. 010055

Introduction

- Little Thorington is a three storey semi-detached farmhouse dating from the 1600s, with elements remaining from the largely demolished 1500s building.
- Timber-framed with plastered walls and tiled roof.
- Many different and uneven floor levels throughout
- Sleeps six in three bedrooms.
- One ground floor shower room, one first floor bathroom with bath and separate shower cubicle and one en-suite.
- Wood-burner in snug and dining room.
- Main formal garden to South, wilder gardens to West and North, laid to lawn and wild meadow with shrubs and trees, grass lawn to North and patio areas to North and South.



** Please note that all door widths given indicate the clearance required for access.*

Little Thorington is Arranged as Follows:

Ground Floor

- Entrance lobby, off which is the boot room, shower room and main hall, which in turn gives access to the kitchen (with a door outside to the East) leading to the utility, the snug, the East staircase, the dining hall and out to the South garden.

First Floor

- Numerous stairs uneven in both height and horizon.
- East landing leading to bathroom with separate shower cubicle, bedroom with ensuite, sitting room and further stairs.

Second Floor

- Numerous stairs uneven in both height and horizon.
- East landing leading to small mezzanine or alternatively to two bedrooms.

Pre-Arrival

- See the main webpage for booking and location details.
- Please contact us prior to booking if you have any specific access requirements.
- Directions provided with booking.

- Please bring a torch if arriving in the dark as there are no streetlights here.

Approach

- The cottage is located by the main road through the village, but is accessed via a small single track lane.
- White wooden gates are marked 'Thorington Hall & Thorington Lodge' and there is a further wooden gate separating the Lodge (first on left) with Little Thorington (straight ahead).
- There is a stream nearby.

Arrival & Parking Facilities

- There is a large gravel area in front of the cottage for up to eight cars.
- A paved area (Northern terrace) leads from the gravel car park to the front door step.
- The keysafe is to the right of the front door.



Thorington Hall from the junction of the main road and the side lane



Outer entrance gates to gravel drive



Parking area



Front door with steps up and keysafe to right

Getting In (& Out) of the Cottage

- The stone step is 170mm high followed by further wooden threshold 100mm high.
- The semi-glazed wooden front door is 810mm wide x 1.91m high.
- Opens onto a large lobby.

Getting Around the Cottage

Entrance Lobby

- Lino floor plus large entrance mat.
- Central light flush to ceiling.

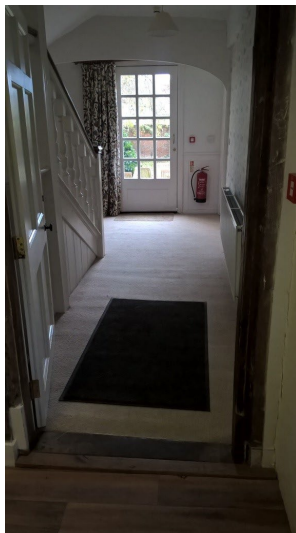
Boot Room

- Semi-glazed wooden door: 640mm wide x 1.93m high with 5mm high brass room separator.

- Shelves along two walls 760mm high, hooks on wall 1620mm above floor.
- Two high chairs for guest use.
- Frosted window facing North.
- Central light flush to ceiling.
- Lino floor.

Shower Room

- Semi-glazed wooden door: 640mm wide x 1.93m high with 5mm high brass room separator.
- Shower cubicle: 200mm threshold, sliding door giving access width of 470mm.
- Toilet seat height: 420mm.
- Basin height: 800mm.
- Lever taps.
- Non-slip mat.
- Towel rail minimum height: 1.67m.
- Chair: 440mm seat height; 440mm seat back height.
- Butler's rest 85cm to to shelf.
- One central flush ceiling light.
- Two frosted windows facing North.
- Lino floor.



Left to right:

- *Shower in shower room*
- *View from lobby down main hall to door to south garden*
- *Door to main hall from south terrace*

Main Hall – East

- Wooden door: 950mm wide, 20mm wooden threshold.
- Carpet plus two entrance mats.
- Three pendant lights.
- Semi-glazed door to South terrace with 20mm threshold and three stone steps down (110, 160 and 155 mm).

Snug

- Door: 750mm wide, 1.96m high, threshold 10mm up, then 30mm down.
- Two three-seater leather Chesterfields: seat heights 480/490mm x seat backs 580/550mm.
- Three-seater leather Chesterfield double sofa bed: seat height 480mm x seat back 350mm.
- Woodburner in fireplace.
- Storage trunk 430mm with games & storage basket for wood 420mm high.
- Two wooden side tables: heights 780mm and 720mm, the latter bearing a television & DVD player.
- Drinks trolley 630mm high.
- Two fabric footstools: 360mm high.
- Four double wall lights on East & West walls, one table lamp and one floor lamp.
- Windows facing South and West over the South garden & terrace.
- Wooden floor plus one rug.



Snug



Kitchen

Kitchen

- Door: 840mm wide x 1.99m high.
- Three wooden steps down from hall with handrail: 160, 180 & 100mm high.
- Ground level & wall mounted units (the latter 410mm above worktop).
- Worktop height: 910mm.
- Long low dresser: 870mm high.
- Central marble-topped island: 900mm high.
- Six wooden backless stools: 760mm high.
- Integrated full height fridge and separate freezer, range cooker, dishwasher, toaster, kettle & radio.
- Belfast sink and draining board with mixer tap with lever handles.
- Fireplace with range (no longer in use) 170mm down to hearth.
- Four pendant lights and hood light over range cooker.
- Windows looking North over the Lodge's courtyard and East to the lane.
- Ironwork railing enclosing a wooden step down (110mm, then 160mm) to a small stone area with door to outside: door 840mm wide x 1.89m high with threshold 80mm, then stone step 140mm down to tiled outside area.
- Tiled floor.



Left to right:

- *Steps to kitchen from main hall with door to snug in background*
- *Largely unused door to kitchen from East, with fenced barrier visible in background*
- *Steps to utility from kitchen*

Utility

- Door: 660mm wide x 1.82m high.
- Three wooden steps up from kitchen with handrail: 140, 160 & 170mm high.
- Wooden area then 30mm threshold up to tiled floor.
- Ground level & wall mounted units (the latter 410mm above worktop).
- Worktop: 920mm high.
- Dishwasher, washing machine, tumble drier, microwave, electric oven, free-standing fridgefreezer and first aid kit.
- Walk-in cupboard with 80mm threshold down, door 680mm wide, containing vacuum cleaner and ironing board.
- Two flush ceiling lights.
- Windows to North overlooking the side of a building and East over the lane.
- Mainly tiled floor with wooden area by door to kitchen.

Dining Room

- Door from main hall (East): 940mm wide x 1.94m high with threshold 5mm.
- Door from small Northern lobby: 580mm wide x 1.89m high with threshold 20mm.
- Door from inner hall (West): 900mm wide x 1.89m high with threshold 20mm.
- Large wooden table: 730mm high.
- Two long wooden benches 490mm high.
- Four wooden chairs with rush seats: 450mm seat height x 490mm seat back height.
- Ornate wooden chair: 460mm seat height x 610mm seat back height.

- Two wooden side tables, each with one table lamp: 740 & 770mm high to surface.
- Grandfather clock.
- Fireplace with woodburner, hearth edged in wood.
- Four double wall lights by fireplace and on opposite wall.
- Window to South overlooks formal garden and three more to North (two of which are high up) overlook parking area and wilder garden.
- Wooden floorboards with room-length runner.



Dining room

Eastern Staircase – Ground to First Floor

- Seven wide, slightly sloping steps averaging 150mm high to semi-landing with North-facing window; turn 180° for:
- Seven further steps with two flush wall lights to small landing; turn 90° right to:
- Seven more steps to first floor landing.
- Steps vary between 150 and 210mm high.
- Impressive wooden bannister.
- Carpeted.

East Landing – First Floor

- Corner table: 570mm high, with one table lamp.
- Four pendant lights.
- Window to South overlooking terrace and garden.
- Wooden trunk: 600mm high x 1.7m wide x 59mm deep.
- Carpeted sloping and uneven floor.



*Bedroom 1 – Rosier room (above)
Bedroom 1 ensuite (right)*



King-Size Bedroom 1 (Rosier Room) – East, First Floor

- Door: 830mm wide x 1.95m high.
- King size wooden-framed bed: 650mm high.
- Two bedside cupboards each with one table lamp: 610mm high to surface.
- Mirror-topped chest of drawers 1m high to surface.
- Wooden ailer: 730mm high.
- Wooden chair: 440mm seat height x 670mm back height.
- Wardrobe: 1.89m high x 1.04m wide.
- Fireplace (no longer in use) with marble hearth edged by a 20mm high wooden kerb. • Three double wall lights: one above bed and two either side of fireplace
- South and West facing windows overlook the South garden & terrace.
- Uneven, sloping carpeted floor.

En-Suite to Bedroom 1 (Rosier Room)

- Door: 670mm wide x 1.73m high with 90mm threshold.
- Curved corner shower cubicle with sliding door: 90mm threshold x 430mm door width.
- Toilet seat height: 420mm.
- Small basin height: 810mm.
- Shelf: 1.4m high.
- Lever taps.
- One flush central ceiling light.
- Window facing East over lane, stream & fields.
- Lino floor.

Main Bathroom – East, First Floor

- Door: 850mm wide x 30mm threshold.
- Shower cubicle (rectangular): 220mm threshold x 480mm (sliding) door width x 810mm minimum internal width/depth.
- Toilet seat height: 420mm.
- Slipper bath: 600mm high at lowest point x 500mm minimum internal width at top x 1500mm internal length with lever taps & shower attachment at end of bath.
- Chest of drawers: 720mm high, and small cabinet: 770mm high, either side of bath.

- Counter top height: 840mm.
- Basin height: 870mm.
- Lever taps.
- Fireplace (no longer used) with a wooden edge dropping 40mm to marble hearth.
- Four flush ceiling lights.
- Window facing East to the lane, stream & fields beyond.
- Tiled flooring.

Sitting Room

- Door: 830mm wide x 1.89m high.
- Threshold: 150mm up from landing, then down 190mm to wooden step, then down 180mm to carpet
- Three leather two-seater sofas: seat height 460mm x seat back height 500mm.
- Four leather armchairs: seat height 460mm x seat back height 570mm.
- Two fabric footstools: 340mm high and two leather footstools: 380mm high.
- Television on table: 730mm high.
- Docking music system on table: 760mm high.
- Wooden coffee table: 500mm high x 470mm deep x 500mm high.
- One wooden side table: 530mm high.
- Fireplace (no longer used) with a wooden edge raised 20mm to the hearth.
- Three double wall lights, two table lamps and one floor lamp.
- Window facing South over the formal garden and three more (two being very high up) to the North overlooking the parking area and wilder garden.
- Carpeted plus one rug.



Sitting room



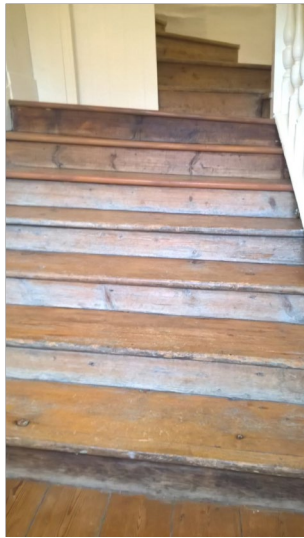
Bedroom 6 (Wade room)



Bedroom 7 (May room)

Eastern Staircase – First to Second Floor

- Seven wide, slightly sloping wooden steps to small semi-landing with North facing window and one flush wall light; turn 90° right for:
- Seven further very wonky wooden steps then stairs split:
- Seven more steps to right to mezzanine level.
- Six steps with 90° left turn to small wooden landing leading to two bedrooms (no. 6 & 7).
- Wooden bannisters.
- Wooden, sloping & uneven floor.



Left to right:

- *Stairs, ground to first floor, East*
- *Stairs, first to second floor, East*
- *Stairs and mezzanine, viewed from second floor, East*

Eastern Mezzanine – Second Floor

- Wooden bookcase: 870mm high.
- Side table bearing table lamp: 530mm high.
- Armchair: 450mm seat height.
- Wooden chair: 800mm high.
- Two flush wall lights.
- Window into twin bedroom 5 (Heigham room).
- Wooden floor with rug.

East Landing – Second Floor

- One wall light.
- Wooden floor.

Twin/Super King-Size Bedroom 7 (May Room) – East, Second Floor

- Door: 710mm wide x 1780mm high.
 - Restricted ceiling height with slopes to East and West with beams overhead at 1.84m high.
 - Two single fabric beds: 1.43m high x 630mm high to mattress, which can be zip-linked into super king size bed.
 - Two bedside stools each with one table lamp: 460mm high.
 - Mirror-topped chest of drawers 800mm high to surface.
 - Wooden airer: 840mm high.
 - Wooden chair: 450mm seat height x 390mm back height.
 - Two flush ceiling lights.
- North facing window overlooks the Lodge, outbuildings and Northern garden. Uneven, sloping wooden floor with rug.

Twin Bedroom 6 (Wade Room) – East, Second Floor

- Door restricted by beam and sloping ceiling: 240mm wide at top (1.93m high), 720mm wide x height 1.29m.
- Restricted ceiling height with slopes to East and West with beams overhead at 1.82m high.
- Two single fabric beds: 1.43m high x 630mm high to mattress.
- One bedside cabinet with table lamp, 760mm high to surface.
- Mirror-topped chest of drawers with table lamp, 790mm high to surface.
- Wooden airer: 790mm high.
- Wooden armchair chair: 390mm seat height; 680mm back height.
- Two flush ceiling lights.
- East-facing window overlooks the lane, stream & fields.
- Uneven, sloping wooden floor with rug.

- Wooden chair: 430mm seat height x 730mm back height.
- Two flush ceiling lights.
- North-facing window overlooks the parking area and Northern garden with another window looking onto the East wing mezzanine.
- Wooden floor with rug.

Garden

- **Southern terrace** paved in slightly uneven flagstones leading to main formal walled garden with lawn, a gravel path and a few trees & shrubs:
 - One circular wooden tables with 640mm kneespace.
 - Six armless wooden chairs with seat height 430mm x seat back 600mm high.
 - Barrel BBQ.
 - Two outside lights either side of door to main (East) hall.
- **Western garden**, a former walled nuttury now left as a wildlife haven.
- **Northern terrace** paved in slightly uneven flagstones leading to parking area and a wildlife garden with areas of lawn including badminton, wildflower meadow, and few trees and shrubs, all enclosed by fences, hedges & walls:
 - One rectangular wooden table with 640mm kneespace.
 - Eight armless wooden chairs with seat height 430mm x seat back 600mm high.
 - Two outside lights either side of door to small Northern lobby between dining room & bedroom.
 - Two wooden benches: 1.46m high x 46cm high to seat.
- **Outbuildings**, the left-hand of which houses the general waste, recycling & glass bins plus the wood store.

Additional Information

- Assistance dogs are welcome at all our cottages.
- In the event of a fire, it is the responsibility of the guests to evacuate themselves. Vibrating fire/smoke detectors are available if requested at time of booking. Please contact us if you have any other specific access requirements in this respect.

Facilities at all Cottages

The National Trust aims to expand the list of accessible /equipment/items available at each cottage and these may include:

- Cordless kettle
- Hollowfibre bedding
- Chair with armrests
- Good reading light
- Large handle vegetable peeler
- Easy tin opener
- Easy jar opener
- Non-slip mat for bath/shower
- Non-slip place mat
- Information in alternative formats (on request)

Please note that we cannot guarantee that all items will be available at the time of your visit. Please enquire at the time of booking regarding any particular requests.

Specialist Equipment

Other specialist equipment such as wheelchairs, bath seats, toilet frames etc may be available for loan or purchase from the local Red Cross loan centre. Please check this out before booking the cottage and contact us if you require further information.

<http://www.redcross.org.uk/standard.asp?id=89425>

Future Plans to Improve Access to National Trust Holiday Cottages

We are currently in the process of writing accessibility guides for all our holiday cottages and improving access over time for all our guests. All feedback is very helpful in informing us of ways in which we can improve access to all our cottages. We welcome any comments or ideas from you about access at this cottage and thank you for taking the time to do this. Please do this in the most convenient way for you. See contact details below or information on website.

About the Accessibility Guide

This Accessibility Guide is intended to provide key information about the cottage that may be particularly relevant to guests with disabilities. It is reviewed annually. Please contact us prior to booking if you would like more detailed information and we will be happy to oblige.

Phone: 0844 800 2070

Email: cottages@nationaltrust.org.uk

Access for all at the National Trust

- The Access for all office works to improve access at all National Trust accommodation and properties. The office welcomes comments and ideas on improving access.

Phone: 01793 818531

Email: accessforall@nationaltrust.org.uk

March 2024