

## National Trust Cottages Accessibility Guide

Lyveden Cottage  
Nr Oundle  
Northamptonshire  
PE8 5AT



Property ref: 006031

### Introduction

Set in the grounds of Lyveden, Northamptonshire's ancient Rockingham Forest. Lyveden Cottage is a detached 2 storey stone build. Originally dates back from 1700's when it was acquired by Lady Gowan in 1732. The recent refurbishment reflects Elizabethan times.

Sleeps up to 5 people in 3 bedrooms + travel cot and has a separate dining room and lounge with a mixture of tile, wood & flagstone flooring. The stairs and first floor are carpeted.

The property has central heating powered by LPG Gas bottles, two wood burners and the added option of portable oil filled electric radiators.

### Ground floor

Lobby, kitchen, dining room, entrance hall, WC/shower/utility room and lounge.

### First floor

Three bedrooms (1 kingsize, 1 superking and 1 single), bathroom with over bath shower and mixer taps attachment.

### Pre-Arrival

- See the main webpage for booking and location details

- Please contact us prior to booking if you have any specific access requirements.
- Directions provided with booking.

## Approach

- The cottage is accessed through two double wooden gates up a farm track. A further wooden gate is outside the property.

## Arrival & Parking Facilities

- Double wooden gate outside cottage width 5500mm once opened, allows access to gravel parking area for 2 vehicles.
- Electric car charging point located on outbuilding to the side of parking area.
- Concrete slabs & brick-weave leading to side door 5m from parking area.
- Outside light above side door, but if arriving after dark it is advisable to bring a torch.



## Getting in (and out) of the Cottage

- Key safe with spin dial is located to the righthand side of door on wall, height 1140mm.
- Threshold 75mm high. Side door width 720mm. height 1891mm.

## Getting around the Cottage

### Ground Floor

#### Lobby & Kitchen

- The side door leads into a small lobby which opens through to the kitchen on the right, width 727mm height 1927mm.
- The kitchen is a galley kitchen with a width of 1069mm with linoleum flooring.
- Kitchen leads through to dining room width 865mm height 1693mm
- Worktop height of 900mm



#### Dining Room

- Dining room has wooden oak flooring with inglenook fireplace and wood burner.
- The door from the Dining room leads to the entrance hall width 812mm height 1809mm.
- Dining room chairs x4 without arm rests, x2 with, all have a seat height of 490mm. Table height is 704mm

#### Entrance Hallway

- Tiled flooring in entrance hallway.
- Doorway to garden width 919mm height 1956mm.

#### WC/Shower/Utility room

- Leading off hallway to WC/shower/utility room, door width 817mm height 1982mm.
- Shower cubicle (step into 190mm), WC with push button flush (height 402mm), basin (height 802mm) and understairs cupboard with washing machine.

#### Lounge

- Door leading off hallway to lounge width 802mm height 1822mm.
- Flagstone flooring in lounge.
- Fireplace and wood burner.
- Sofa with a height of 403mm, armchair with a seat height of 403mm

## Stairs

- Leading off hallway stairs width from banister 774mm.
- Head room height at lowest point 1815mm.
- Top of stairs extra steps height 191mm to the left - Landing & the right -Master Bedroom.



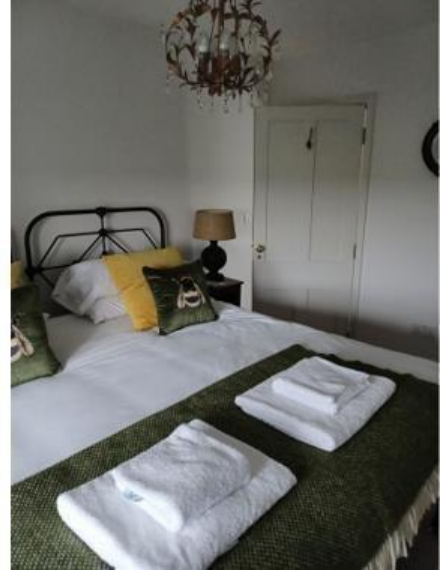
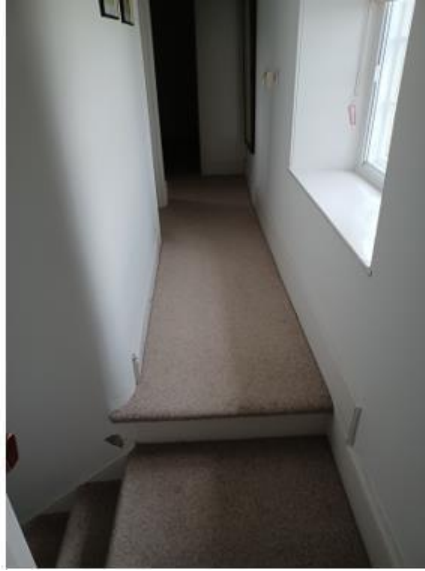
## First Floor

### Master Bedroom

- Top of stairs on the right, entrance to Master bedroom width 760mm height 1816mm
- There is a 6ft/1820mm king size bed in the room height 691mm.
- There are bedside lamps with switches on the cable.

### Double bedroom

- From the landing left of stairs entrance to superking bedroom width 725mm height 1938mm
- One superking bed, width 1829mm height 694mm
- Bottom of bed to wall 464mm right side of bed to wall 494mm
- There are bedside lamps with switches on the cable.



## Single bedroom

- Entrance from landing to single room width 729mm height 1958mm.
- Single bed 6ft/1820mm height 680mm. Ample space around bed.
- Bedside lamp with switch on cable

## Bathroom

- Entrance to bathroom from landing width 722mm height 1979mm.
- The WC is 430mm high with a dual push flush.
- There is a shower over the bath with a swing glass shower screen.
- Basin is 828mm high.
- Bath has a height of 566mm internally 1400mm long 315mm deep with 2 grab handles.
- Towel rail present & linoleum flooring.

## Garden

- Large garden surrounding Cottage, mainly laid to lawn with paving slabs & gravel.
- One level gently sloping path leading from front door around property to side door.
- Garden is hedged with open fields, the mound and 'New Bield' to view.
- Garden table 719mm high, six chairs with armrests which have a 405mm high seat.



## Additional Information Facilities at all Cottages

The National Trust aims to expand the list of accessible /equipment/items available at each cottage and these may include

- Cordless kettle
- Hollowfibre bedding
- Chair with armrests
- Good reading light
- Large handle vegetable peeler
- Easy tin opener
- Non-slip mat for bath/shower
- Non-slip place mat
- Easy jar opener
- Information in alternative formats (on request)

Please note that we cannot guarantee that all items will be available at the time of your visit. Please enquire at the time of booking regarding any particular requests.

## Specialist equipment

Other specialist equipment such as wheelchairs, bath seats, toilet frames etc may be available for loan or purchase from the local Red Cross loan centre. Please check this out before booking the Cottage and contact us if you require further information.

<http://www.redcross.org.uk/standard.asp?id=89425>

## **Future Plans to improve Access to National Trust Holiday Accommodation**

- We are currently in the process of writing accessibility guides for all our holiday cottages and bunkhouses and improving access over time for all our guests. All feedback is very helpful in informing us of ways in which we can improve access. We welcome any comments or ideas from you about access at this cottage and thank you for taking the time to do this. Please do this in the most convenient way for you. See contact details below or information on website.

## **About the Accessibility Guide**

- This Accessibility Guide is intended to provide key information about the accommodation that may be particularly relevant to guests with disabilities. Please contact us prior to booking if you would like information that is more specific, and we will be happy to oblige. Email:

[cottages@nationaltrust.org.uk](mailto:cottages@nationaltrust.org.uk) Phone: 0344 8002070

Date; March 2024