

+

National Trust Cottages Accessibility Guide

Nanceglos House

Trengwainton
Madron
Penzance
TR20 8RZ

Ref: 011059



Introduction

Nanceglos is a large, stone house on the boundary of the National Trust gardens at Trengwainton. There is gas central heating and a log burner. Enclosed garden.

The cottage is arranged as follows:

Ground Floor: Hall, sitting room, dining room with stairs to first floor.

Back corridor with doors off to kitchen, family bathroom with shower and WC, twin bedroom, utility and exit door to rear.

First floor: Stairs up from dining room to landing.

Doors off landing to four bedrooms and a bathroom with bath, shower and WC.

(First floor bedrooms are: 1x ensuite double, 1 x double, 1 x twin, 1 x single)

Pre-Arrival

- See the main webpage for booking and location details.
- Please contact us prior to booking if you have any specific access requirements.
- Directions provided with booking

Arrival & Parking Facilities

Follow directions to Trengwainton. Turn right in front of the white gates and follow the road for 50metres to the main entrance for Trengwainton garden and car parks. Follow signs for Nanceglos House along the narrow lane. The unmarked parking area for Nanceglos is bordered by big stones on the left of the track. There is room for up to four vehicles.



*Turn right in front of the white gates and head up the road to the main garden entrance (centre picture)
Follow the signs for Nanceglos House which is straight ahead along the narrow lane*



Parking area near the cottage



Front gate into garden

Getting in (and out) of the cottage

- From the parking area there is a short walk to the picket front gate (1070mm wide)
The track here has a slight incline and can be uneven and rocky in places.
- A 200mm stone step drops down to the gravel path leading to the front door.
- Three stone steps (100mm, 190mm and 150mm lead to the solid wooden stable-type front door with canopy above. There is no handrail on these steps but a low wall on either side helps with access. The threshold step is 190mm high.
- Combination key safe on wall to the right of the front door
- Outside light, but we recommend that guests bring a torch with them

Getting around the cottage

Ground floor

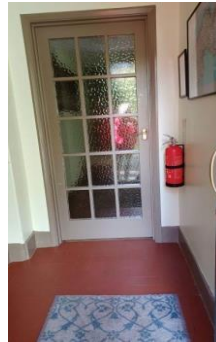
- Front door into small hall. Doors to sitting room and dining room. Stairs from dining room to first floor. Doorway to corridor with changes of level running along the back of the house. Doors off to kitchen, family bathroom, twin bedroom, utility and back door.

First Floor

- Turning stairs up from dining room to landing. Doors off to two double bedrooms (one ensuite), twin bedroom, single bedroom, bathroom with shower and WC.

Porch/hall

- Wooden stable type door 1000mm wide
- Terracotta tiled floor with small rug
- Ceiling light
- Multi-paned glass door to dining room
- Door to sitting room



Sitting room

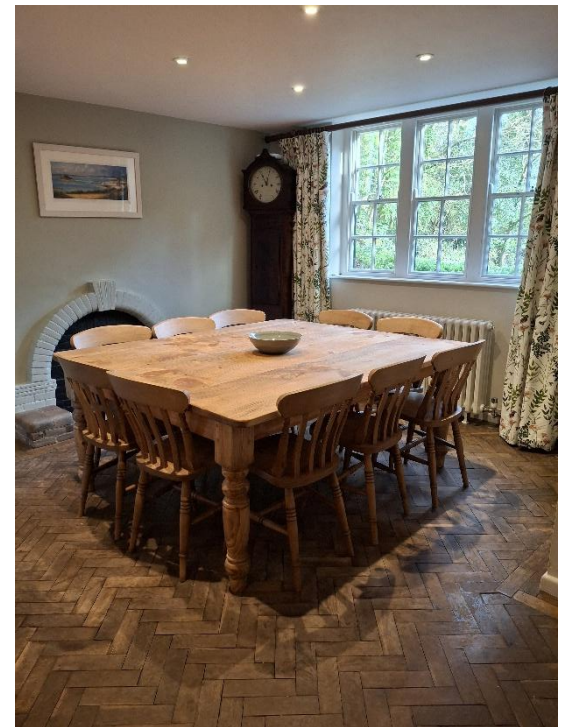
- Door (1030mm wide) with a 20mm threshold
- Uneven quarry-tiled flooring with large central rug
- 4 large windows to front and side of property overlooking garden
- Vaulted ceiling
- 4 spotlights, 3 double wall lights, 2 floor lamps
- Log burner
- 42-inch TV with separate DVD player on top of wooden chest
- 2 x large matching sofas (seat height 520mm x 1930mm wide. Back height 600mm)
- 1 x small Chesterfield sofa (seat height 380mm x 1550mm wide. Back height 400mm)
- 1x wing armchair with curved back and sturdy arms (seat height 520mm back height 800mm)
- Large low coffee table (1960mm x 1220mm)
- Small wooden chest as side table 750mm x 430mm
- Small wooden side table 450mm x 450mm
- Radiators





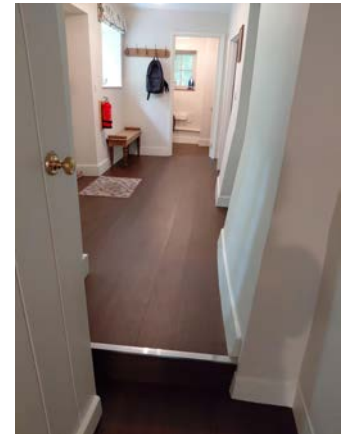
Dining Room

- Door with small glass panes from porch into dining room (800mm wide)
- Parquet flooring
- Window to front overlooking garden, window to rear of property
- 6 recessed spotlights and a table lamp
- Non-functioning fireplace
- Large wooden dining table 1520mm x 1800mm
- 10 wooden dining chairs 40mm seat height
- Wooden sideboard 850mm high x 1800mm long x 650mm wide
- Large wall mirror over sideboard
- Radiator
- Understairs cupboard
- Stairs to first floor with 2 steps up (170mm and 180mm), then a right turn to the rest of the staircase
- Doorway to back corridor with 2 steps up (110mm and 110mm)



Back corridor

- Open doorway from dining room (800mm wide)
- 2 small steps up from dining room (each step 110mm high)
- Parquet flooring to first part of corridor; luxury vinyl floorboard-style flooring along the rest.
- Door and a 170mm step part way along
- 3 windows to rear of the house
- 4 ceiling lights
- Wall-mounted coat hooks (1750mm high) next to utility
- Bench (1200mm W, 300mm D, 460mm H)
- Off this corridor are the kitchen, family bathroom, twin bedroom, utility and rear exit door.



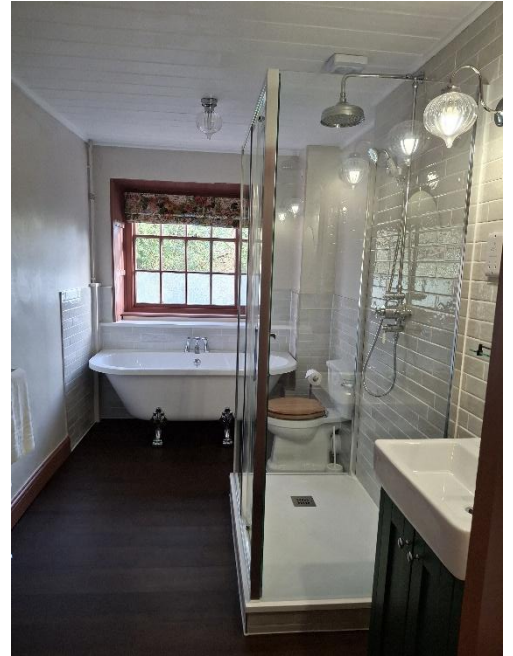
Kitchen

- Door from inner corridor (720mm wide)
- Wood floor
- 8 spotlights
- 2 windows to front
- A range of floor cupboards and drawers under a 940mm high worktop
- A range of wall cupboards, some glass fronted
- Plate rack above built-in floor cupboard
- One and half sized ceramic sink and drainer with lever operated mixer tap
- Central island (910mm high) and breakfast bar (950mm high)
- 3 high wooden stools (730mm high)
- *Cookmaster* range-type cooker with ceramic hob, grill and 2 ovens
- Cooker extractor hood with light
- Stand-alone fridge-freezer
- Integrated dishwasher, kettle, microwave, toaster



Family bathroom (ground floor)

- Wash basin with twist control mixer taps 880mm high x 570mm wide
- Glass shelf above basin with shaver socket to side
- Wall mirror over
- Shower enclosure 770mm x 1160mm (opening 450mm). Overhead rainfall-type shower plus directional shower. Lever and twist tap controls 1120mm high
- Freestanding bath under window 650mm high x 1500 wide. Twist control mixer taps
- Lower panes of window glass obscured
- WC 470mm high with lever flush
- Heated towel rail / radiator
- 2 x wall lights and one ceiling light
- Luxury wood panel vinyl flooring



Twin bedroom (ground floor)

- Twin beds with 620mm high 900mm wide x 2000mm long
- Bedside table (800mm high) with lamp
- Chest of drawers with mirror
- 2 x windows to front
- Window seat with cushion
- Hanging rail inside fireplace recess
- Ceiling light
- Radiator
- Fitted carpet



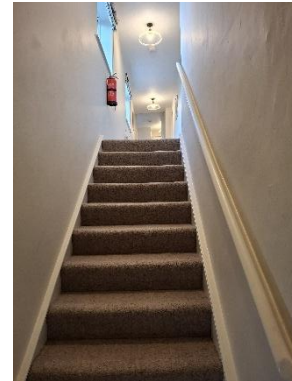
Utility room

- Door from back corridor (730mm wide)
- Vinyl wood panel style flooring
- 1 ceiling light
- Window to side of property
- Washing machine and separate tumble dryer under a 950mm high worktop



Stairway to first floor (from dining room)

- Fitted carpet
- 2 steps to small landing (170mm and 180mm high)
- Locked storage cupboard
- 90 degree right turn to 12 further steps (170mm high) up to first floor
- Handrail on right hand side 800mm high
- There are no stair gates provided in this cottage



Landing

- Fitted carpet
- 3 windows to rear of property
- 4 ceiling lights
- 3 steps along the landing, all 180mm high
- Doors off landing to ensuite double bedroom, double, twin and single bedrooms, WC and bathroom
- Small nursery chair at end of landing near the bathroom



Double bedroom with ensuite

- Door from landing 640mm wide
- Window overlooking front garden
- 1 ceiling light and 2 bedside lamps
- King-size bed with metal bedstead 650mm high x 2000mm long x 1500mm wide
- 2 wooden bedside cabinets with table lamps
- Dressing table (800mm x 1100mm) with mirror over
- Wooden stool 500mm high
- Built-in cupboard with hanging space
- Wooden stool 500mm high
- Radiator
- Fitted carpet



Ensuite

- Freestanding bath under window 630mm high x 1500 mm long. Twist style mixer tap
- Large shower 1670 mm x 860mm with 640mm opening
- Twist controls 110mm high. Overhead and directional shower heads
- Wash basin with cupboard under 880 mm high x 560mm wide. Twist mixer taps
- Glass shelf with shaver socket to side and wall mirror
- Heated towel rail
- 2 x wall lights and 2 recessed spotlights
- Luxury wood panel effect flooring



Double bedroom

- Door from landing 720mm wide
- Fitted carpet
- 2 x radiators
- 2 windows to front
- Bedstead 600mm high x 1500mm wide x 2000mm long
- 2 x bedside tables (730 mm high) with lamps
- Wardrobe with mirror
- Small wooden chair 430mm seat height
- Chest of drawers/wash stand with mirror
- Ceiling light



Twin bedroom

- Door from landing 640mm wide
- Fitted carpet
- Window to front
- 1 ceiling light
- 2 metal bedsteads 600mm high x 1900 mm long x 900mm wide
- 1 x wooden bedside cabinet (800mm high) with lamp
- Wooden chest of drawers with mirror above (830mm high)
- Hanging rail in recess
- Small wooden chair 420mm seat height



Single bedroom

- Door from landing 640mm wide
- Fitted carpet
- Window to front
- Radiator
- 1 ceiling light and 1 bedside lamp
- Single bedstead 600mm high x 1900mm long x 900mm wide
- Wooden bedside cabinet 820mm high
- Wooden dressing table with 4 drawers and an integrated mirror 810mm high
- Small wooden chair 430 seat height
- Clothes hanging pole 1700mm high



Bathroom

- Wooden door 650mm wide
- Luxury vinyl wood effect flooring
- 2 windows and extractor fan
- 2 x wall lights and 4 recessed spotlights
- Basin (800mm high x 560mm wide) with cupboard under and mirror over
- Shelf and shaver socket
- Bath 730mm wide with hand grips and mixer tap with twist controls
- Shower over bath – overhead and directional showerheads. Twist tap controls 1210 mm high

Garden

- Gently sloping and level grassed areas at front of cottage on two levels with gravel paths around front and side of cottage and to the front and side garden gates
- The front border of the garden is marked by a low stone wall and wicket gate. The lower garden area at the front is bordered with trees and shrubs offering considerable privacy
- 2 bench-type picnic tables 440mm seat height 760mm table height
- 3 shallow steps to lower garden with rotary drier
- Around the back of the cottage is a log store and bin area
- From the lower level at the back of the cottage 7 stone steps with a handrail on the left lead up to the concreted path leading to the rear door of Nanceglos
- There are 2 exterior lights at the back of the property
- The path extends from the back of the cottage round to the front where there is another small wooden gate and green waste bins

*Front garden immediately outside the cottage
Steps down to the more secluded lower garden area
Looking from lower garden up steps to main front garden
Looking from lower front garden to the side of house*



*Above pictures L-R:
Log store at back of cottage
Steps up from log store to rear of property
Path around rear of property*

Additional Information

Facilities at all cottages

The National Trust aims to expand the list of accessible /equipment/items available at each cottage and these may include

- Cordless kettle
- Hollowfibre bedding
- Chair with armrests
- Good reading light
- Large handle vegetable peeler



National Trust

- Easy tin opener
- Non-slip mat for bath/shower
- Non-slip place mat
- Easy jar opener
- Information in alternative formats (on request)

Please note that we cannot guarantee that all items will be available at the time of your visit. Please enquire at the time of booking regarding any particular requests.

Specialist equipment

Other specialist equipment such as wheelchairs, bath seats, toilet frames etc may be available for loan or purchase from the local Red Cross loan centre. Please check this out before booking the Cottage and contact us if you require further information.

<https://www.redcross.org.uk/get-help/borrow-a-wheelchair>

<https://www.redcross.org.uk/get-help/hire-a-toilet-aid>

Future Plans to improve Access to National Trust Holiday Accommodation

- We are currently in the process of writing accessibility guides for all our holiday cottages and bunkhouses and improving access over time for all our guests. All feedback is very helpful in informing us of ways in which we can improve access. We welcome any comments or ideas from you about access at this cottage and thank you for taking the time to do this. Please do this in the most convenient way for you. See contact details below or information on website.

About the Accessibility Guide

- This Accessibility Guide is intended to provide key information about the accommodation that may be particularly relevant to guests with disabilities. Please contact us prior to booking if you would like information that is more specific and we will be happy to oblige.

Email: holiday.enquiries@nationaltrust.org.uk

Phone: 0344 8002070

Access for All at the National Trust

- The Access for All office works to improve access at all National Trust accommodation and properties. The office welcomes comments and ideas on improving access.

Phone: 01793 818531

Email: accessforall@nationaltrust.org.uk

May 2026