

National Trust Cottages Accessibility Guide

Wood Farm
Newgale
Pembrokeshire
SA62 6AR



Ref: Mike Henton

Introduction

A two story traditional Georgian Welsh farmhouse

Stone construction

Sleeps 6

The cottage is arranged as follows:

Ground floor, open plan kitchen dining area.

Stone hall leading to utility room dining room, sitting room, downstairs shower room, two final exit doors, stairway to second floor.

Large landing area leading to two twin rooms, family bathroom, snug, master bedroom and ensuite bathroom.

Courtyard patio and small garden to front of property.

Sea views to the front, views over farmland to the rear.

Pre-Arrival

- See the main webpage for booking and location details.
- Please contact us prior to booking if you have any specific access requirements.
- Directions provided with booking

Arrival & Parking Facilities

Arrival is via a rough part tarmacked track to two tarmacked parking bays.



Stone step 14cm to cobbled courtyard.



Step into kitchen 3cm.



Getting in (and out) of the cottage

There are three final exit doors, one into the kitchen, one to the downstairs shower room and a front door exit to the garden.



Getting around the cottage

All doorknobs except exit doors, master ensuite and ground floor shower room, are round wooden beehive knobs.

Ground floor

Kitchen

Dual aspect
Doorway 89cm wide height 179cm high
Stone flagged floor



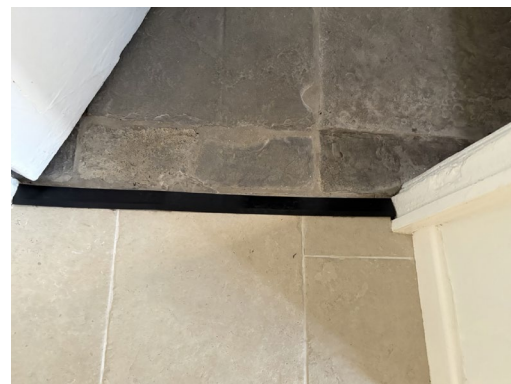
Belfast kitchen sink with mixer tap
Rangemaster Induction oven and hob



Counter tops 94cm
Table height 75cm
Chair height 47cm



Kitchen door leading to stone flagged hall – uneven surface.
Leading to staircase
Utility Room, Dining Room, Sitting Room and front door
Ramped slope of 7cm



Utility room

Single aspect
Door width 90cm
1cm step to vinyl floor tiles

Containing washing machine and tumble dryer
American style fridge freezer
Countertop height of 92cm
Belfast sink height 94cm



Dining Room

Single aspect

Door width 90cm

Table height 75cm

Chair seat height 46cm (x six chairs)

Velvet chair seat height 41.6cm



Quarry tile flagged floor



Front door

Width 86cm

Doorway lip 2cm

Leading to flagged patio area

Sitting Room

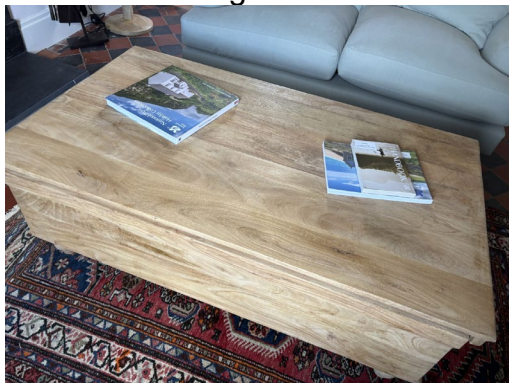
Dual aspect

Tiled floor

Door width 90cm

Sofa height 46cm

Coffee table height 46cm





National Trust

Bi-folding doorway, sloped floor leading to tiled boot room and shower room.
Door width 74 cm



Boot Room

Tiled floor
Exit door width 92cm
Step height to outside patio 4.5cm
Bench Seat ??



Shower Room

Tiled floor
Door width 75 cm
Toilet height 41cm
Washbasin pedestal height 84cm



Turn handle taps



First Floor

Stairway to first floor



15 steps with left hand turn
First step 20cm
Average step height 17cm
Top step 18cm
Staircase has a runner up the centre
Banister rail to left hand side
Gap at top of stairs between banister rails 98cm

First floor landing

Sisal carpeted area
Leading to bathroom
Twin room
Twin room
Snug
Master bedroom
LHS Doorway width 89cm

Bathroom

Single aspect
Door width 71cm
Toilet height 45cm



Wash basin height 84cm
Single twist taps



Bath height 63cm



Mixer taps

Twin Room (left of stairs)

Dual aspect

Wooden floorboards

Door width 74cm

Twin bed heights 60cm



Bedside table x 2 height 61cm

Chest of drawers height 104cm



Twin room (right hand side of stairs)

Single aspect

wooden floorboards with rug

Door width 86cm

Twin bed height 61cm

Bedside table x 1 height 76.5cm



Dressing table height 78cm



Snug
Single aspect
Door width 86cm
Wooden floor with rug
Two comfy chairs seat height 42cm



Coffee table height 32.5cm
Window seat height 51cm
Wardrobe

Master bedroom leading to ensuite bathroom
Dual aspect
Wooden floor with rugs
Bed height (including mattress) 83.5cm



Bedside tables x 2 height 75cm



Chest of drawers 104cm
Chair height 50cm
Wardrobe

Doorway to ensuite width 74cm
Two stone steps, 21cm and 10cm leading to bathroom



Latch fitting on door
Vinyl floor
Dual aspect
Toilet height 45cm
Washbasin pedestal 83.5cm
Single twist taps
Bath height 64.5cm





Mixer taps

Washstand height 75.5cm

Garden

Enclosed garden to front with grass and hard standing

Bench seat height 43cm

Courtyard patio

Table height 74.5cm

6 chairs height 45cm

Wooden bench seat height 43cm

Additional Information

Facilities at all cottages

The National Trust aims to expand the list of accessible /equipment/items available at each cottage and these may include

- Cordless kettle
- Hollowfibre bedding
- Chair with armrests
- Good reading light
- Large handle vegetable peeler
- Easy tin opener
- Non-slip mat for bath/shower
- Non-slip place mat
- Easy jar opener
- Information in alternative formats (on request)

Please note that we cannot guarantee that all items will be available at the time of your visit. Please enquire at the time of booking regarding any particular requests.

Specialist equipment

Other specialist equipment such as wheelchairs, bath seats, toilet frames etc may be available for loan or purchase from the local Red Cross loan centre. Please check this out before booking the Cottage and contact us if you require further information.

<https://www.redcross.org.uk/get-help/borrow-a-wheelchair>

<https://www.redcross.org.uk/get-help/hire-a-toilet-aid>

Future Plans to improve Access to National Trust Holiday Accommodation

- We are currently in the process of writing accessibility guides for all our holiday cottages and bunkhouses and improving access over time for all our guests. All feedback is very helpful in informing us of ways in which we can improve access. We welcome any comments or ideas from you about access at this cottage and thank you for taking the time to do this. Please do this in the most convenient way for you. See contact details below or information on website.

About the Accessibility Guide

- This Accessibility Guide is intended to provide key information about the accommodation that may be particularly relevant to guests with disabilities. Please contact us prior to booking if you would like information that is more specific and we will be happy to oblige.

Email: holiday.enquiries@nationaltrust.org.uk

Phone: 0344 8002070



Access for All at the National Trust

- The Access for All office works to improve access at all National Trust accommodation and properties. The office welcomes comments and ideas on improving access.

Phone: 01793 818531

Email: accessforall@nationaltrust.org.uk

Date