

National Trust

National Trust Newtown Cabin

Accessibility Guide

Newtown Cabin
Town Lane
Nr Newport
PO30 4PA



Ref 0010028
Sleeps 4 + Cot
1 Dog

Introduction

- Set in the quiet backwater on the Newtown National Nature Reserve, this rustic, cosy cabin is surrounded by coastal paths and meadows.
- This cottage adjoins the National Trust Visitor Centre at Newtown Nature Reserve
- A ground floor property. Front door opens into a small hallway at one end of the property. Leading to the Sitting room, Kitchen/Diner and a fire door separating the Twin and Double bedroom and bathroom. There is no bath at this property just a walk-in shower
- Heating is provided by storage heaters with the addition of a wood burner in the Sitting Room
- Oak flooring throughout communal rooms
- Wooden door with traditional handles throughout
- There is a gravel garden area to the front of the property with table and chairs
- Twin bedroom has double door opening onto a small balcony and set of steps to the gravel area
- Wi-fi and a good mobile phone reception
- Allocated parking space
- Cottage is decorated in soft browns and greens
- Crockery is linen coloured

- Newtown Cabin is located approximately 1.5 miles from the nearest number 7 Southern Vectis Bus service on the A3054 at Shalfleet. Please note the walking route does not have a pavement and is mainly narrow lanes without street lighting

Pre-Arrival

- See the main webpage for booking and location details
- Please contact us prior to booking if you have any specific access requirements
- Directions provided with booking

Approach, arrival and parking

- Arriving at Newtown Cabin via Town Lane the building is easy to see being a wooden clad black building. The allocated parking space is located at the far end of the building and is clearly marked. There is also a National Trust car park to one-side and the visitors' centre. The buildings are set out in a long L shape
- Pedestrian gate from the parking area opens into the cottages gravel garden area. The gravel is deep in some places
- A second pedestrian gate is situated on the western boundary and opens into town lane, a wooden 'bridge' spans a small gully
- Outside lighting is provided over the doors



Getting in (and out) of the cottage

- There are concrete steps to the front door. The steps are steep and vary in height 18cm, 20cm and 29cm. A wooden handrails is on both sides at 96cm high
- Key safe is located on the left-hand side 150cm high from the top step
- Half glazed door, 77cm wide with a bar handle and a yale style lock
- Light switch located on the left-hand side



Getting around the cottage

Hall

- Small bench seat at 46 cm high with coat hooks over
- Pendant lighting
- Oak flooring
- Storage heater
- P50 fire extinguisher, fire action notice
- Utility cupboard with shelf and automatic light



Sitting Room

- Door from hallway 74cm wide
- Oak flooring with rug
- Woodburning stove on tiled hearth with mirror over
- Corner sofa with seat height of 44cm
- Armchair 44cm seat height and arms 60cm high
- Chest/coffee table 45cm high
- Chest of drawers 70cm high for TV
- Side cabinet 76cm high
- Ceiling pendant
- 2 table lamps with switch on the cables
- Floor standing light with foot switch
- TV and DVD player
- Windows facing the east and west with roman blinds
- Location of fuse box and fire alarm control panel

- Large storage heater



Kitchen/Diner

- Oak flooring throughout
 - Fire door with automatic closure to bedroom corridor
 - Pendant lighting
 - Wall light with downlighters
 - Selection of wall and undercounter units
 - Worktop height at 89cm high
 - Electric cooker with 4 hotplates and extractor fan over, glass splashback
 - Kettle, toaster, microwave 800W, radio
 - Sink and half sink and drainer, lever style handles and arch over tap
 - Half size dishwasher
 - Washing machine
 - Fridge freezer at 176cm high
 - Wooden kitchen table 75cm high, 2 wooden chairs 47cm seat height and two winged arms (carvers) 46cm seat height
 - Window facing east and west with roman blinds
 - Storage heater
-
- Fire door to corridor is fitted with an automatic fire alarm release. It can be sensitive to noise
 - Corridor has pendant lighting
 - Light switch on the right-hand side
 - Wood flooring



Double Bedroom

- Door width 74cm
- Double bed with wooden headboard and a with mattress height 80cm
- 2 bedside cabinets 80cm high with lamps, switches on the cable
- Decorative chair 47 seat height
- Storage heater
- Chest of drawers 75cm high
- Wooden floor with rug
- Wall hooks
- Wall mounted mirror
- Pendant light
- Window facing east with roman blind



Twin Bedroom

- Door width 74cm
- Light switch on the right-hand side
- 2 single beds with a mattress height of 66cm
- 2 bedside cabinets 105cm high and 75cm high
- 2 lamps with switch on the cable
- Carpet flooring with rug
- Half glazed double doors facing east open to a small balcony and a set of 4 steps 16cm tread with balustrade, leading to the gravel garden area at the front of the cottage. Roman blinds



Bathroom

- Fully tiled room with ceramic floor and wall tiles
- Wall light and down lighters
- Walk-in shower with screen, sliding door
- Mains shower with overhead and hand-held showerheads
- Pillar tap on horizontal and lever flow direction
- Toilet with seat height 45cm
- Sink at 88cm high with pillar taps, glass shelf, mirror and light over
- Heated towel rail
- There is no Bath at this property

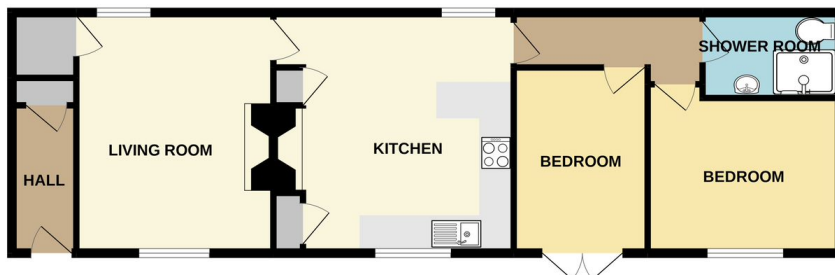


Garden

- Enclosed garden mainly laid to gravel with a small shrub border
- Wooden table, 4 wooden chairs with arms
- Log store located to the left-hand side of the front door
- Bin area located to the left-hand side of the front door. General Waste, Glass and Dry Mixed Recycling



GROUND FLOOR
736 sq.ft. (68.4 sq.m.) approx.



TOTAL FLOOR AREA: 736 sq ft. (68.4 sq.m.) approx.
Whilst every attempt has been made to ensure the accuracy of the floorplan contained here, measurements of doors, windows, rooms and any other items are approximate and no responsibility is taken for any error, omission or mis-statement. This plan is for illustrative purposes only and should be used as such by any prospective purchaser. The services, systems and appliances shown have not been tested and no guarantee as to their operability or efficiency can be given.
Made with Metropix ©2022

Facilities at all cottages

The National Trust aims to expand the list of accessible /equipment/items available at each cottage and these may include

- Cordless kettle
- Hollowfibre bedding
- Chair with armrests
- Good reading light
- Large handle vegetable peeler
- Easy tin opener
- Non-slip mat for bath/shower
- Non-slip place mat
- Easy jar opener
- Information in alternative formats (on request)

Please note that we cannot guarantee that all items will be available at the time of your visit. Please enquire at the time of booking regarding any particular requests.

Specialist equipment

Other specialist equipment such as wheelchairs, bath seats, toilet frames etc may be available for loan or purchase from the local Red Cross loan centre. Please check this out before booking the Cottage and contact us if you require further information.

<http://www.redcross.org.uk/standard.asp?id=89425>

Future Plans to improve Access to National Trust Holiday Accommodation

- We are currently in the process of writing accessibility guides for all our holiday cottages and bunkhouses and improving access over time for all our guests. All feedback is very helpful in informing us of ways in which we can improve access. We welcome any comments or ideas from you about access at this cottage and thank you for taking the time to do this. Please do this in the most convenient way for you. See contact details below or information on website.

About the Accessibility Guide

- This Accessibility Guide is intended to provide key information about the accommodation that may be particularly relevant to guests with disabilities. Please contact us prior to booking if you would like information that is more specific and we will be happy to oblige.
Email: cottages@nationaltrust.org.uk
Phone: 0344 8002070

Access for All at the National Trust

- The Access for All office works to improve access at all National Trust accommodation and properties. The office welcomes comments and ideas on improving access.
Phone: 01793 818531
Email: accessforall@nationaltrust.org.uk

Date June 2023