

National Trust Cottages Access Statement

Porthdy Wiwer
Goch
Plas Newydd
Llanfairpwll
Anglesey
LL61 6DQ

Ref: 008043



Introduction

- Stone built cottage located at the entrance of Plas Newydd Mansion and Gardens.
- The cottage can accommodate five people plus a cot.
- Oil central heating throughout.
- Multifuel stove in sitting room.
- Unsecured outdoor space: medium sized garden and patio area.
- Parking available for 2 to 3 cars.

The Cottage is arranged as follows:

Ground Floor:

- Porch/Laundry area, bathroom, kitchen with 2-seat breakfast area, dining room, sitting room, and front porch.

First Floor:

- Staircase up from dining room, master bedroom and middle bedroom have double beds, twin room has two single beds.

Pre-Arrival

- See the main webpage for booking and location details.
- Please contact us prior to booking if you have any specific access requirements.
- Directions provided with booking
- Bring torch if arriving in the dark as there are no streetlights here.

Approach

- The cottage is approximately four miles from Llanfairpwll village. Guests need to follow the information sent with the booking information with care.

Arrival & Parking Facilities

- There is a parking area to the side of the cottage. The key safe is in a black box outside the back door main entrance to the right (as facing). It is operated by a push button mechanism. A torch is recommended especially if arriving in the dark as the numbers on the box can be difficult to see. The key is returned to the key safe on departure.

Getting in (and out) of the cottage

Getting around the cottage

Ground floor:

- Level access from back door through laundry area, bathroom, kitchen, dining room, sitting room and front porch, where there is a mat.
- Porch step 3cm.
- Internal door widths on the ground floor are: 77cm sitting to dining room, 75cm kitchen to dining room, 65 kitchen to porch and porch to bathroom which is 72cm.
- There are original quarry tiles in the sitting room and kitchen, there is a ceramic tiled laundry area and a parquet wood floor in dining room, the bathroom has vinyl floorcovering.
- The staircase to the first floor is 74cm wide with the height of the risers being 18cm, final step is 20cm.
- Bannister rail to the left hand side is 80cm.



Sitting room showing door to porch and further door into dining room with stairway.

First floor:

- Once at the top of the stairs the first floor is level.
- Carpeted throughout.
- The width of internal doors on the first floor is 73.5cm for the two double bedrooms, and 69cm for the twin bedroom.

- The width of the landing is 77cm.
- There are carpets throughout the first floor and the height of the banister is 80cm.



Top of staircase showing door to Master bedroom

Kitchen

- Height of worktop is 91cm.
- Double electric cooker, 90cm, with ceramic top and fridge freezer.
- Eco bulb lighting.
- Electric toaster and kettle.
- Breakfast table with a height of 75.5cm and two wooden chairs with a seat height of 46cm.



Kitchen, breakfast area and dining room through door

Sitting Room

- Two sofas with seat height of 45cm (1x150cm wide, 1x170cm wide).
- One armchair with seat height of 45cm.
- Multifuel stove.

- Table lamp and main light.
- Good natural light from the window to the front garden.
- Large rug with non-slip backing covering floor between sofas.



Sitting Room

Dining Room

- Wooden table with wooden chairs.
- The height of the table is 75cm with maximum clearance underneath of 65cm.
- Wooden chairs have a seating height of 47cm.

Ground floor Bathroom

- WC, basin, shower over bath.
- The WC is 41cm high.
- The basin is 81cm high.
- Acrylic bath is 55cm high.
- Basin and bath are next to each other.



Bathroom

Twin Bedroom

- On first floor.
- 69cm door clearance.
- The beds are 56cm high x 90cm wide x 188cm long.
- Metal and wooden bedsteads.
- Tallboy, 91cm, with mirror.
- Bedside table with lamp.
- Floor cushions-58cm high body pouffe, 30cm high foot pouffe.



Twin Bedroom

Double Bedroom

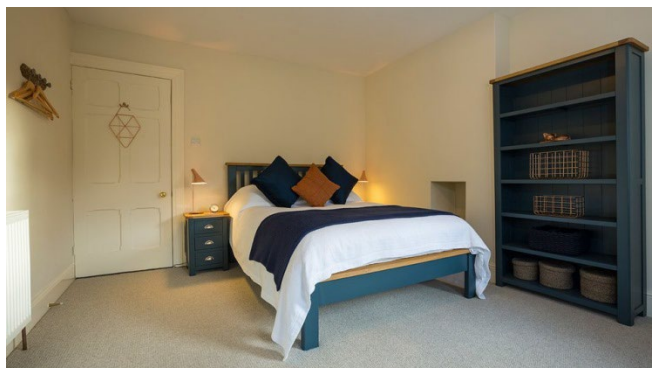
- On first floor.
- 74cm door clearance.
- The bed is 65cm x 190cm x 135cm.
- Wooden double bedstead.
- Wooden bedside tables, 49cm, with lamp either side.
- Wardrobe.



Double Bedroom

Master Bedroom

- On first floor.
- 74cm door clearance
- The bed is 65cm x 135cm x 190cm.
- Wooden bed.
- Wooden bedside tables, 59cm with lamp on each.
- Full length floor standing mirror.
- Dressing Table 77cm and 52cm stool.



Garden

- Unsecured outdoor space
- Medium sized garden and patio area with metal table, 73cm, and 6 chairs, 45cm, and a metal bench, 41cm seat height..
- Parking available for 2 to 3 cars.
- Outbuildings to rear of property not accessible to guests.



Garden patio area showing back door-main entrance

Additional Information

- Assistance dogs are welcome at all our cottages.
- Pets and assistance dogs can be accommodated here.
- In the event of a fire, it is the responsibility of the guests to evacuate themselves. Vibrating fire/smoke detectors are available if requested at time of booking. Please contact us if you have any other specific access requirements in this respect.

Additional Information

Facilities at all cottages

The National Trust aims to expand the list of accessible /equipment/items available at each cottage and these may include

- Cordless kettle
- Hollowfibre bedding
- Chair with armrests



- Good reading light
- Large handle vegetable peeler
- Easy tin opener
- Non-slip mat for bath/shower
- Non-slip place mat
- Easy jar opener
- Information in alternative formats (on request)

Please note that we cannot guarantee that all items will be available at the time of your visit. Please enquire at the time of booking regarding any particular requests.

Specialist equipment

Other specialist equipment such as wheelchairs, bath seats, toilet frames etc may be available for loan or purchase from the local Red Cross loan centre. Please check this out before booking the Cottage and contact us if you require further information.

<http://www.redcross.org.uk/standard.asp?id=89425>

Future Plans to improve Access to National Trust Holiday Accommodation

- We are currently in the process of writing accessibility guides for all our holiday cottages and bunkhouses and improving access over time for all our guests. All feedback is very helpful in informing us of ways in which we can improve access. We welcome any comments or ideas from you about access at this cottage and thank you for taking the time to do this. Please do this in the most convenient way for you. See contact details below or information on website.

About the Accessibility Guide

- This Accessibility Guide is intended to provide key information about the accommodation that may be particularly relevant to guests with disabilities. Please contact us prior to booking if you would like information that is more specific and we will be happy to oblige.

Email: cottages@nationaltrust.org.uk

Phone: 0344 8002070

Access for All at the National Trust

- The Access for All office works to improve access at all National Trust accommodation and properties. The office welcomes comments and ideas on improving access.

Phone: 01793 818531

Email: accessforall@nationaltrust.org.uk

Date October 2023