

## National Trust Cottages Accessibility Guide

**Quin Cottage**  
**Port Quin**  
**Nr. Port Isaac**  
**Cornwall**



Quin Cottage is on the right

**Cottage Ref: 011035**

### Introduction

- Quin Cottage is just meters from the inlet of Port Quin. The cottage is semi-detached and on two floors.
- The cottage is heated by eco-electric radiators, portable oil-filled radiators, a wood burning stove in the sitting room and an electric towel rail in the bathroom.
- There is a demister system in the kitchen which would operate in case of fire.
- In the event of power failure emergency lighting is provided on the landing.
- There is a telephone for emergencies in the store below Guy's cottage.

### Ground Floor

- Kitchen with open staircase to first floor, utility/boot room, sitting room.

### First floor

- Bathroom with electric shower above bath, double bedroom and a single bedroom.

### Pre-Arrival

- See the main webpage for booking and location details.
- Please contact us prior to booking if you have any specific access requirements.
- Directions provided with booking.

## Approach

- The drive down into Port Quin is relatively steep with winding lanes which can become busy during the season.

## Arrival & Parking Facilities

- There is a designated car parking space in Port Quin car park, which is approximately 50 metres from the cottage. This main car park is relatively level and gravelled. The car park is unlit.
- There is a stream on one side of the car park.
- The key safe is in a Caretakers store opposite Carolina Cellar. This store is below Guy's Cottage. This has a push button combination lock at a height of 1200mm. A bolted wooden door then opens into the store. The key safe is wall mounted immediately on the left-hand side just at the top of steps down at a height of 1300mm.
- There is a sensor light above the door to this store which helps to illuminate the key safe. A torch is recommended, especially if arriving in the dark, as the numbers on the lock can be difficult to see. The key safe is operated by a combination lock mechanism, where the dials need to be turned to the cottage combination code.
- The cottage front door is illuminated with a sensor light but there is no light from either the main car park.

## Getting in (and out) of the cottage

- There is a slate step to the front door which is 180mm high.
- There is a wooden threshold which is 90mm high.
- The front door is opened with a latch and a Euro lock.
- The clear opening width of the front door is 685mm.
- The light switch is on the left-hand side at a height of 1350mm.



Steps to store



Store, for key collection



Cottage key safes

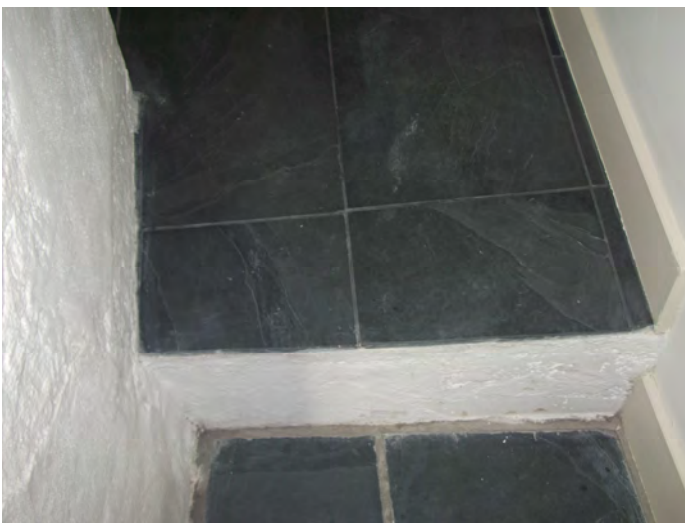


Quin Cottage front door

## Getting around the cottage

### Ground floor:

- The kitchen has a stone floor; the utility room has a tiled floor. The stairs are carpeted. All other rooms have wood flooring, apart from the bathroom which has vinyl flooring.
- There is a large rug in the sitting room and scatter rugs in the bedrooms.
- There is a slightly raised threshold into the sitting room of 25mm.
- The minimum clear door opening width throughout is 685mm.
- There is a deep, uneven step up into the utility room which is 250mm high.



Step into utility room

- There is a sturdy handrail on the left-hand side to the utility room which is 900mm from floor level.

# National Trust

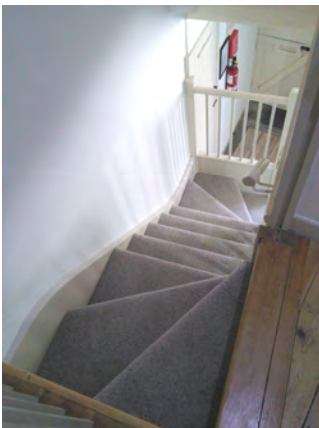
- Stairs to first floor are carpeted with 13 treads. The stairs turn at the top and the bottom.
- There is a handrail integral to the banister and then another two handrails at the top of the stairs the handrails have a height of between 900mm and 1100mm from each tread.
- The minimum width of the stairs is 650mm max depth of each step is 200mm.
- There is a slot-in stairgate for the top of the stairs.



Stairs leading up direct from kitchen

## First Floor

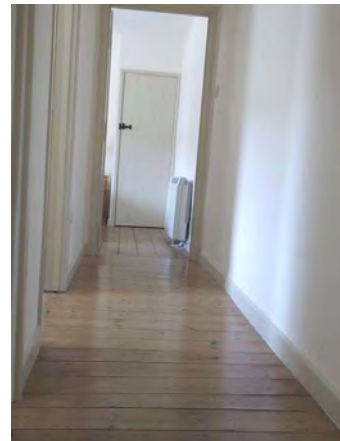
- There is level access to all rooms from the landing.
- Wooden floorboards.



Looking downstairs



Handrail at top of stairs to landing



Landing



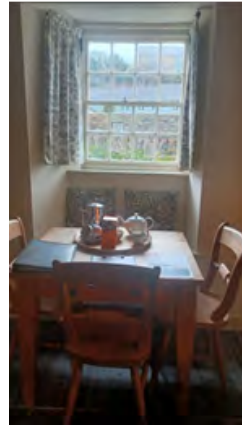
## Sitting Room

- Directly off the kitchen.
- Wooden floorboards with a large coir rug.
- The main light switch is on the left of the door at a height of 1430mm.
- Central ceiling light and a floor lamp.
- Two recessed windows at high level. Low level window seats with seat height at 600mm.
- Wood burning stove.
- Large sofa (1903mm wide) with a seat height of 500mm and a back height of 400mm.
- Armchair with a seat height of 450mm and a back height of 530mm.
- 32-inch TV separate DVD player.
- CD/radio.



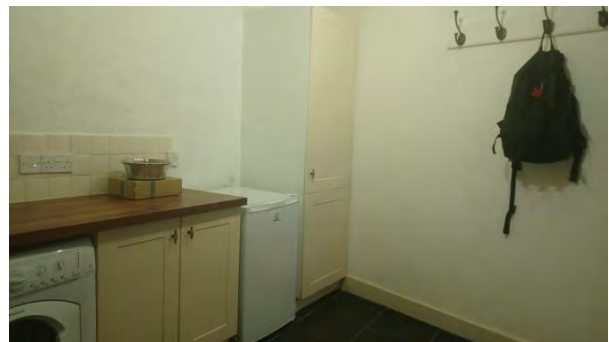
## Kitchen

- Front door opens directly into the kitchen.
- The light switch is to the left of the door at a height of 1350mm.
- Central light and four LED spot down lighters plus under cupboard lighting.
- Stainless steel sink with lever taps.
- Integrated electric cooker with ceramic hob and cooker hood above.
- Integrated slim line dishwasher.
- Integrated under-counter fridge.
- There is a pine kitchen table with knee clearance of 600mm.
- Three dining chairs with a seat height of 450mm and back height of 450mm
- Integrated microwave at a height of 1600mm, cordless kettle, toaster.
- Recessed window. Window seat with seat height at 600mm.
- Doors to utility room and sitting room.



## Utility Room

- Directly off the kitchen.
- The main light switch to the left of the door at a height of 1350mm.
- Worktops are 900mm from floor level.
- Base units below the worktop for additional storage.
- Stand-alone, counter height freezer.
- Belfast sink with pillar crosshead taps.
- Washer dryer.
- Five spotlights on ceiling track.
- Two high recessed windows.
- Coat rack hooks at a height of 1800mm and a broom cupboard.
- Electric radiator



## Double Bedroom

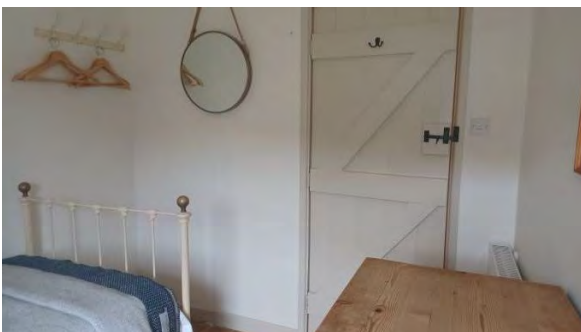
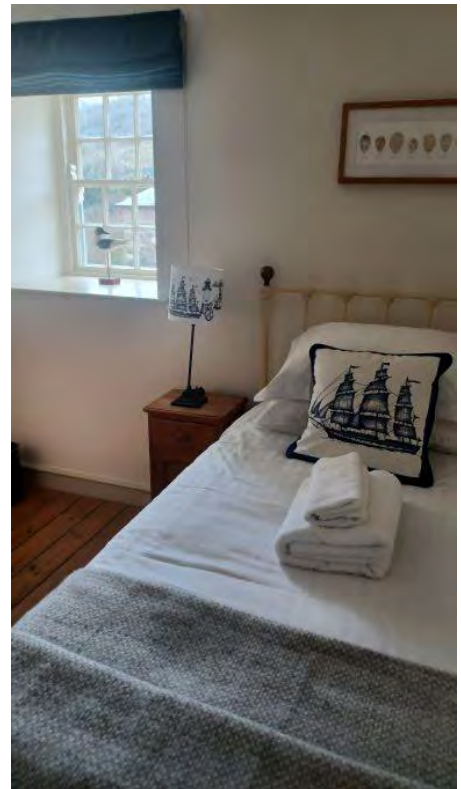
- At far end of landing
- The main light switch is to the right of the door at a height of 1350mm.
- Central shaded ceiling light.
- Double bed 1520mm wide, length of 2000mm and a height of 720mm.
- Four-drawer chest with bedside lamp.
- One bedside cabinet with bedside lamp.
- Wall mirror.
- There is a wooden chair with seat and back height of 450mm.

- Built in wardrobe with a hanging rail at 1570mm from floor level.
- High level window with views to the hillside.



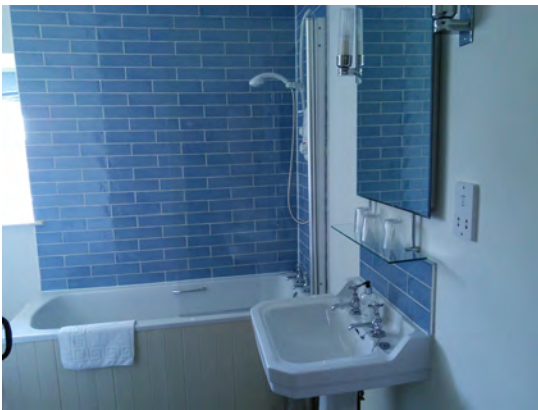
## Single Bedroom

- The main light switch is to the left of the door at a height of 1350mm.
- Central shaded ceiling light.
- The single, iron bedstead is 3'900mm wide x 1900mm long x 600mm high.
- The bed is positioned against the wall.
- Four-drawer chest
- Bedside cabinet with bed side lamp.
- Wall mirror.
- Clothes rail at a height of 1550mm.
- Chair with a seat and back height of 450mm.
- Radiator
- Wooden floor



## Bathroom

- The light switch is at the top of landing to left of bathroom door at a height of 1180mm.
- Standard size bath with a height of 580mm and twist taps.
- Electric shower over the bath with controls at a height of 1250mm.
- Hand basin has a height of 850mm and has twist taps.
- Mirror and shaver point over hand basin with 2 pillared side lights.
- Electric ladder type heated towel rail.
- Three ceiling spotlights.
- WC with a seat height of 420mm.
- Vinyl floor tiles.



## Garden

- Access to garden is approximately 10 metres along the lane, just opposite the car park.
- There are four steps to the garden gate.
- Garden is elevated with views over Port Quin and ideal for people watching!
- The garden is level and enclosed with a drop to the lane below. This is hedged with vegetation.
- There is a wooden table and four armed wooden chairs.
- The knee clearance on the table is 660mm and the chairs have a seat height 440mm of and a back height of 460mm. These are set down on slate and chippings in the centre of the lawn.





Steps to garden area

## Additional Information

- Assistance dogs are welcome at all our cottages
- In the event of a fire, it is the responsibility of the guests to evacuate themselves. Vibrating fire/smoke detectors are available if requested at time of booking. Please contact us if you have any other specific access requirements in this respect.
- There is no mobile phone signal in Port Quin.
- Carpets are 80/20 wool/man-made fibres.
- Duvets and pillows are made of hollowfibre.
- Cushions are hollowfibre or man-made.

## Facilities at all cottages

In addition to the standard equipment and facilities, each cottage is equipped with the following:

- Chair with armrests in sitting room.
- Good reading light
- Non-slip mat for bath/shower
- Information in alternative formats (on request)

We aim to provide these items in all cottages but please check when booking as to their availability and to check if new items have been added to the list.

## Specialist equipment

Other specialist equipment such as wheelchairs, bath seats, toilet frames etc may be available for loan or purchase from the local Red Cross loan centre. Please check this out before booking the Cottage and contact us if you require further information.

<https://www.redcross.org.uk/get-help/borrow-a-wheelchair>

<https://www.redcross.org.uk/get-help/hire-a-toilet-aid>



## **Future Plans to improve Access to National Trust Holiday Cottages**

- We are currently in the process of writing accessibility guides for all our holiday cottages and improving access over time for all our guests. All feedback is very helpful in informing us of ways in which we can improve access to all our cottages. We welcome any comments or ideas from you about access at this cottage and thank you for taking the time to do this. Please do this in the most convenient way for you. See contact details below or information on website.

## **About the Accessibility Guide**

- This Accessibility guide is intended to provide key information about the cottage that may be particularly relevant to guests with disabilities. Please contact us prior to booking if you would like information that is more specific and we will be happy to oblige.

Email: [holiday.enquiries@nationaltrust.org.uk](mailto:holiday.enquiries@nationaltrust.org.uk)

Phone: 0344 800 2070

## **Access for All at the National Trust**

- The Access for All office works to improve access at all National Trust cottages and properties. The office welcomes comments and ideas on improving access.

Phone: 01793 818531

Email: [accessforall@nationaltrust.org.uk](mailto:accessforall@nationaltrust.org.uk)

February 2023