

## National Trust Cottages Accessibility Guide



Roseland Porth Barn  
St Anthony in Roseland  
Porthscatho  
TR2 5EX  
Ref: 011067

### Introduction

- Roseland Porth Barn is a two-storey cottage located on the Roseland peninsula.
- It is a comfortable cottage in a rural wooded area a short walk from the beach.
- The cottage has night storage heating, electrorad heaters, convector heaters and an open fire.
- The land immediately around the cottage is reasonably flat.
- There is a large, enclosed garden to the front.

The Cottage is arranged as follows:

The hall, kitchen, dining room, lavatory and sitting room are all situated on the ground level. There are three bedrooms, a shower room and a bathroom on the first floor.

### Pre-Arrival

- See the main webpage for booking and location details.
- Please contact us prior to booking if you have any specific access requirements.
- Directions provided with booking.
- Please bring a torch.

### Approach

- The cottage is approached via country lanes and is a few miles after the village of Gerrans travelling in the direction of St Anthony's Head.

### Arrival & Parking Facilities

- Parking is in the garden on a firm gravel surface.
- There is parking for three cars.



# National Trust

- The distance from the parking place to the cottage is approx. 12m across gravel, grass and a paved path.
- The key safe is on the left-hand side of the door at a height of 125cm ffl (from floor level). It is operated by a combination lock mechanism.
- There is an outside light over the main door.
- Parking Area



## Getting in (and out) of the cottage

- The main door has a clear opening width of 86cm.
- There is a step 14cm high and 2 cm metal threshold into the hall.

## Getting around the cottage

- There is a hard floor covering in the hall, downstairs WC, kitchen, dining room and sitting room.
- There is carpet in the bedrooms, stairs and landing.
- There is hard flooring in the bathroom and shower room.
- Internal doors have clear opening widths from 62-73cm.
- There are 14 stairs with a handrail leading to the first floor.
- There is level access on each floor level.

## Ground Floor

### Entrance hall



## Kitchen

- Door from hall.
- There are 2 windows.
- The height of the worktop is 90cm.
- There is a range style electric cooker with ceramic hob with controls to front and top which is 90cm high.
- There is a larder style fridge freezer, washer/dryer, dishwasher, microwave, cordless kettle and toaster.
- There are 12 spotlights on two tracks.
- There is a dining table and four chairs
- The table has knee clearance of 57cm.
- The dining chairs are 46-47cm high.

## Dining Room

- The dining room is off the hall.
- There is a window overlooking the rear garden.
- There is a ceiling light with 2 bulbs above the dining table and a standard lamp.
- There is a dining table with 6 chairs.
- The table has a knee clearance of 60cm.
- The chairs have a seat height of 47cm.
- There is a dresser and cabinet.
- There is an armchair with cushion. The seat is 48cm high.



## Lavatory

- The basin is 83cm high.
- The WC is 42cm high.
- There is a heated towel rail.
- There are coat hooks on the wall.



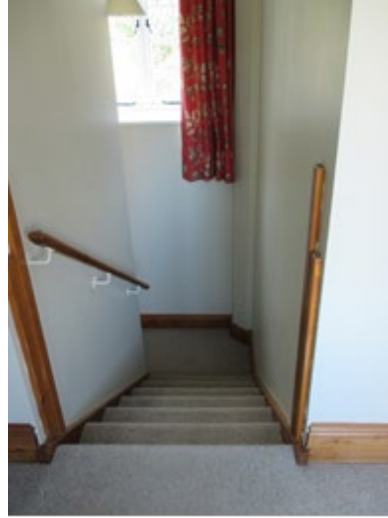


## Sitting Room

- The sitting room is approached from the hall.
- There are three windows overlooking the garden.
- There is a ceiling light fitting, standard lamp and table lamp.
- There are three sofas with a seat height of 47cm.
- There is a TV and DVD player.
- There is a radio.
- There is an open fire.



## First Floor



Landing and stairs down to ground floor

## Double Bedroom

- Door from landing.
- There is a cast iron style double bed 199cm long x 76cm high x 150cm wide.
- The clearance underneath the bed is 5cm.
- There are two bedside tables 63cm high with table lamps.
- There is also a central ceiling light.
- There is a built-in wardrobe with a clothes rail at 158cm ffl.
- There is a chair which is 43cm high.
- There is a chest of drawers at a height of 92cm.
- There are two windows with views over the garden.



## Twin Bedroom

- There is a twin bedroom next to the double bedroom and shower room.
- The beds are 90cm wide x 190cm long x 66cm high which can be made into a double bed on request.
- The clearance underneath the beds is 30cm
- There is a bedside table between the beds which is 68cm high.
- There is a central ceiling light and a table lamp.
- There is a built-in wardrobe with a clothes rail at 158cm ffl.
- There is a chest of drawers which are 75cm high and a chair with a seat height of 46cm high.



## Twin Bedroom

- There is a twin bedroom next to the bathroom.
- The beds are 91.5cm wide x 180cm long x 66cm high, which can be made into a double bed on request.
- The clearance underneath the bed is 5cm.
- There are two chest of drawers 63cm high with table lamps.
- There is also a central ceiling light.
- There is a built-in wardrobe with a clothes rail at 160cm ffl.
- There is a window overlooking the back garden.
- There is a chair with a seat height of 45cm.



## Shower Room

- The shower room is off the landing.
- The shower enclosure is 72 x 94cm.
- The range of the shower door clearance is 71cm.
- The basin is 82cm high.
- There are two recessed spotlights
- There is a backlit mirror above the basin
- There is a shaver socket.
- There is heated towel rail.
- There is no window.



## Bathroom

- The bathroom is off the landing next to the third bedroom.
- The bath is a standard size 54cm high and has two hand grips on it.
- There is a shower over the bath with a shower screen.
- The WC is 44cm high.
- The basin is 80cm high.
- There are four recessed spotlights
- There is a backlit mirror above the basin
- There is a shaver socket
- There is a heated towel rail.
- There is no window





## Garden

- The garden is large and enclosed with grass and shrubs
- There is a table with fixed bench seating in the garden.
- There is a washing line.
- There is a built brick BBQ.



## Additional Information

- Assistance dogs are welcome at all our cottages
- In the event of a fire, it is the responsibility of the guests to evacuate themselves. Vibrating fire/smoke detectors are available if requested at time of booking. Please contact us if you have any other specific access requirements in this respect.

## Facilities at all cottages

The National Trust aims to expand the list of accessible /equipment/items available at each cottage and these may include

- Cordless kettle
- Hollowfibre bedding
- Chair with armrests
- Good reading light
- Large handle vegetable peeler
- Easy tin opener
- Non-slip mat for bath/shower
- Non-slip place mat
- Easy jar opener
- Information in alternative formats (on request)



Please note that we cannot guarantee that all items will be available at the time of your visit. Please enquire at the time of booking regarding any particular requests.

## Specialist equipment

Other specialist equipment such as wheelchairs, bath seats, toilet frames etc may be available for loan or purchase from the local Red Cross loan centre. Please check this out before booking the Cottage and contact us if you require further information.

<https://www.redcross.org.uk/get-help/borrow-a-wheelchair>

<https://www.redcross.org.uk/get-help/hire-a-toilet-aid>

## Future Plans to improve Access to NT Holiday Cottages

- We are currently in the process of writing Accessibility Guides for all our holiday cottages and improving access over time for all our guests. All feedback is very helpful in informing us of ways in which we can improve access to all our cottages. We welcome any comments or ideas from you about access at this cottage and thank you for taking the time to do this. Please do this in the most convenient way for you. See contact details below or information on website.

## About the Accessibility Guide

- This Accessibility Guide is intended to provide key information about the cottage that may be particularly relevant to guests with disabilities. Please contact us prior to booking if you would like information that is more specific and we will be happy to oblige.

Email: [holiday.enquiries@nationaltrust.org.uk](mailto:holiday.enquiries@nationaltrust.org.uk)

Phone: 0344 8002070

## Access for All at the National Trust

- The Access for All office works to improve access at all National Trust cottages and properties. The office welcomes comments and ideas on improving access.

Phone: 01793 818531

Email: [accessforall@nationaltrust.org.uk](mailto:accessforall@nationaltrust.org.uk)

Date: Aug 2022