

National Trust Cottages Accessibility Guide

Shute Barton,
Shute,
Nr Axminster,
Devon
EX13 7PT

Ref: 012039



Introduction

Shute Barton is a Grade I listed medieval building that is set out over two floors with further access to a third floor which is not a part of the holiday accommodation's living area.

There are three staircases in the house, one main open staircase and two spiral staircases. Throughout the house there are numerous steps up and down to the rooms.

Ground Floor:

Entrance Hall and main staircase.

Kitchen, utility room off the kitchen, also off the kitchen are spiral stairs to first floor.

Sitting Room, with entrance to the old kitchen.

Dining Room

Small W/C

Spiral Staircase leading to first and second floors

First Floor:

Five bedrooms in total:

- 1 large double bedroom
- 1 large bedroom zip and link (with ensuite)
- 1 large double room (with ensuite)
- 1 twin bedroom
- 1 double bedroom

Bathrooms:

- 1 bathroom with shower over bath, W/C and wash hand basin

- 1 bathroom with feature bath and separate shower cubicle, W/C and wash hand basin
- 2 ensuite shower rooms

These rooms are connected by various corridors and there is also access to the two spiral staircases from this level.

Second Floor:

Access to the Great Hall, from one of the spiral staircases.

Gardens

The garden is on several levels which are connected by a combination of steps and grassy inclines.

Pre-Arrival

- See the main webpage for booking and location details.
- Please contact us prior to booking if you have any specific access requirements. Directions provided with booking

Approach

The main approach to the house is via a country lane from the A35 and over a track under the Shute gatehouse (not NT). There is an alternative road access to the right-hand side of the gatehouse.



Main entrance under gatehouse



Alternative entrance via track

Arrival & Parking Facilities

Guests can park next to the gate to the house to load and unload. Cars must then be moved to the guest parking area. The guest parking is after the gatehouse down a track on the right-hand side, and is on the left of this road, signposted NT Holiday guests. The spaces for NT guests are marked with signs which say 'Parking for National Trust guests only'. There is a forty-metre walk on hard surface to the house (there are a few pot holes on the drive) and the last section is over a paved yard, which will be slippery when wet.



Loading / unloading area



Parking area



Walk from parking area



Walk from parking area continued



Courtyard

Getting in (and out) of the cottage

- The front door to the cottage is located from the flagstone yard (pictured above) which can be slippery when wet. The waste area and rotary washing line are also located in this area. The two steps to the front door are 170mm and 110mm and there are no handrails.

- The key safe is 1700mm from the ground. There is external lighting in this yard activated by PIR. There are two gates to this yard (each 1290mm wide) and there is no vehicular access to this yard.
- There is a door to the garden terrace from the dining room (980mm wide). There are two paved steps from here to the terrace (both 470mm deep, 1250mm wide) and these steps are not covered by a handrail.



Main entrance door



Rear door to garden from dining room

Getting around the cottage

Ground floor:

Entrance Hall

- Large open space with stairs rising to the first floor. The floor is quarry tiled with a large rug.
- The stairs are 280mm deep, average 160mm high, with a handrail on the left-hand side when ascending the stairs.
- There are 21 steps with two small landings.
- A second spiral staircase is also accessible from this hallway.



- From the hallway there is a door to an understairs cupboard housing the gas shut-off valve, water softener and main cold water shut-off valve.

Kitchen

- Entrance door from hallway is 800mm wide with a threshold strip to the door which is 10mm high. There's a step up into the kitchen which is 150mm high.
- The height of the worktop is 910mm. The sink height is 890mm and the tap is a single mixer tap with pull levers.
- There is a gas range cooker, dishwasher, American style fridge, drinks fridge and microwave
- The flooring is ceramic tiles.
- There is a circular breakfast bar with four kitchen stools
- Good light level provided by ceiling lighting pendants.
- From the back of the kitchen, there is a second entrance hall from the 'back' door, which provides a secondary means of fire escape. The kitchen door to this flagstone passage is 720mm wide, with 4 concrete steps (1080m wide, 280mm deep, 180mm high). The final entry door is 810mm wide, and this leads to rough stone steps with no handrails.



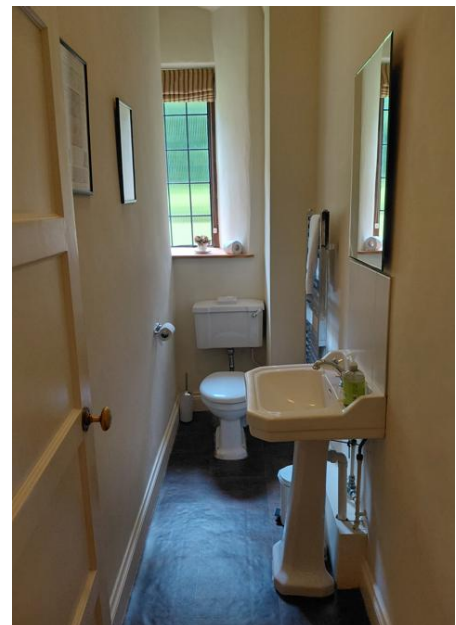
Utility room

- Door to utility room is 740mm, worktop height is 930mm.
- Flooring is continuation of stone slabs from the kitchen.
- Tall utility cupboard housing various household items.
- Equipped with washing up facilities and washing machine and tumble dryer.



Ground floor WC

- WC and basin
- The WC is 430mm high
- The basin is 830mm tall with single cross-head mixer taps



Sitting room



- The entrance door from the hall is 1100mm wide.
- There is parquet flooring throughout, with a rug occupying the central seating area.
- There are two sofas: one three-seater (seat height 510mm) and one two-seater (seat height 470mm). There is also a window seat (580mm high), two wingback armchairs (400mm seat height and 470 seat height) and two smaller armchairs (360mm seat height).
- Lighting is provided by four sets of two arm wall lights and a standard lamp.
- A TV and DVD player are provided with remote controls.
- There is a central coffee table and a selection of other side tables provided.
- Access to medieval kitchen is behind a door curtain.

Medieval kitchen



- Access from the sitting room via steps.
- Lighting is given by two hanging bulbs.
- Flooring is large flagstones
- Table tennis table.

- Two exit doors to front courtyard and back garden



Dining room



- The entrance door from the entrance hall is 710mm wide.
- Parquet flooring throughout.
- Lighting provided by a central chandelier, a smaller chandelier fitting and three table lamps.
- Large dining table (knee height underneath is 140mm) with ten leather upholstered dining chairs (170mm to seat). Please note: these chairs do not have arm rests.
- Two-seater sofa
- Large fireplace with log burner
- Access to garden via the back door.

First floor Landing



- The stairs and landing are carpeted.
- Lighting is provided by a central pendant over stairs
- Two side tables and chest
- Access on one side to twin bedroom and corridor to 'canopy bedroom' and bathroom via two steps.
- Access on opposite side to bathroom, double bedroom and doorway to corridor to two further bedrooms.

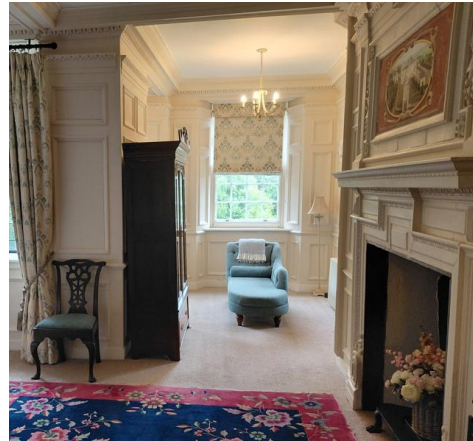
Bathroom



- The entrance door from the landing is 720mm wide.
- The sink height is 830mm with cross-head mixer tap.
- There is a freestanding bath (height 640mm, width 760mm, length 1670mm). Cross-head mixer tap fitted in the centre, no shower attachment. Please note that there are no handrails fitted to this bath.
- W/C (seat height 400mm)

- Shower cubicle (entrance 450mm wide, step to enter at 210mm) – mains powered shower
- Illumination by ceiling light switched on via pull cord at 165mm high and additional over-mirror light.
- Heated towel rail over radiator.

Double Bedroom



- The entrance door from the landing is 700mm wide.
- This room is carpeted with an additional large rug.
- There is no central or wall light fittings to the main sleeping area. Lighting is from two bedside lamps and a standard lamp.
- In the chaise lounge area, there is a ceiling pendant and a standard lamp.
- The wooden framed king-sized bed is 1530mm wide, 1920 long and 530mm high. This is placed centrally with access on both sides.
- There are bedside tables with lamps on each.
- Seating provided: two upholstered dining chairs and chaise lounge.
- Large wardrobe, chest of drawers and vanity unit.

Access corridor to twin and double bedroom



- The door from the landing is 750mm wide, with open access to spiral stairs.
- There are three steps down to bedroom level, one 170mm high, second 120mm high and third 130mm high.
- There is an armchair, bookcase, large chest of drawers and standard lamp in this area.

Double bedroom (zip and link)



- The door from the corridor is 800mm wide with a level threshold.
- The room is carpeted throughout with an additional rug.
- The bed/s (height 660mm and width 1880mm) can be made up as singles and each has a bedside table.
- Lighting is from a large pendant chandelier, two bedside table lamps and a standard lamp.
- There is a door from the room to an en-suite shower room.
- There is a large wardrobe, chest of drawers, a dressing table and two upholstered dining chairs (one with arms).

Ensuite shower room



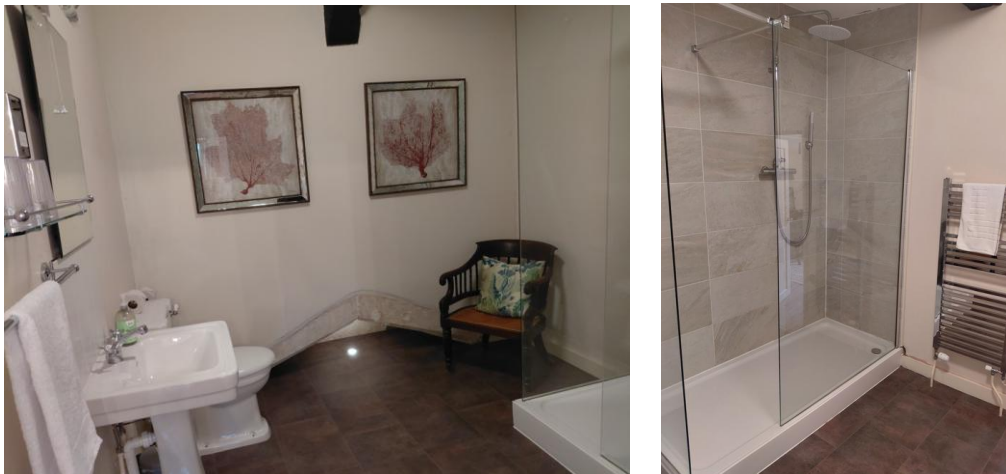
- There is one step up from the bedroom (210mm high).
- Vinyl flooring (towelling shower mat provided)
- Lighting provided by large overhead fitting with overhead light pull and an over-mirror light.
- The basin is 830mm high with cross-head mixer taps
- W/C (seat height 430mm)
- Walk-in double shower (entrance 530mm), height to shower tap is 1300mm. Step up to shower is 170mm. Mains fed shower.
- Heated towel rail.

Double Bedroom



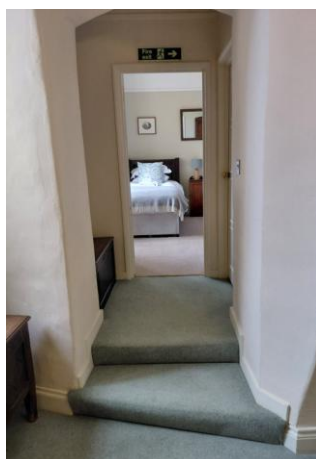
- The door from the corridor is 700mm wide with level threshold.
- The room is carpeted with an additional large rug.
- There is a large overhead chandelier fitting.
- Bed (height 630mm, width 1530mm, length 2000mm, height under bed 40mm) with two bedside tables with lamps.
- Window seat.
- Chest of drawers, large wardrobe and dressing table with chair.
- Door leading to ensuite shower room (730mm)

Ensuite shower room



- There is a step from the bedroom to the shower room (190mm)
- There is vinyl flooring (towelling shower mat provided)
- Basin (height 830mm) with cross-head mixer taps
- W/C (430mm seat height)
- Walk-in shower cubicle 540mm, height to shower tap 1360m. Step into shower 160mm. Mains fed shower.
- Towel rail
- Rattan and wood chair
- Overhead light fitting (height to pull cord is 1600mm), spotlight in the floor and shaver light over mirror.

Second corridor off main landing area



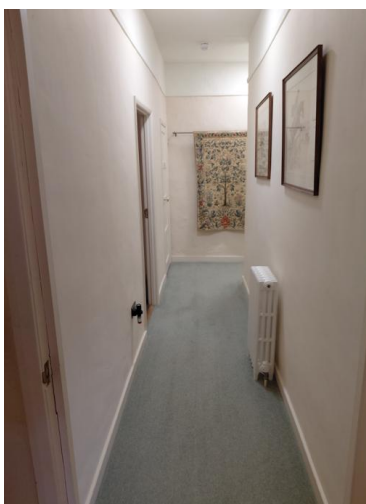
Two steps first 160mm high and 360 deep, second step 150mm high.

Twin Bedroom



- The door from the landing is 700mm wide.
- This room is carpeted.
- Lighting is provided via central pendant light fitting and one bedside lamp.
- Two single beds (630mm high, 940mm wide and 2000mm long)
- One central bedside table.
- Wardrobe and upholstered dining chair

Corridor



Door 780mm, with electronic closing device

Bathroom



- The entrance door from the corridor is 740mm wide
- There is vinyl flooring (towelling bath mat provided)
- Height to basin 820mm with cross-head mixer taps.
- Seat height to W/C 400mm
- Height to bath 550mm, with electric shower over and shower screen, width 690mm, length 1290mm. Individual cross head taps on bath.
- Heated towel rail over radiator
- Lighting from central overhead light fitting with additional shaver light over mirror.

Double Bedroom



- The entrance door from the corridor is 710mm wide.
- This room is carpeted, with an additional rug.
- Lighting via three pairs of wall lights and two bedside lamps
- Bed height 700mm, width 1560mm length 2000mm, height under bed 310mm with two bedside cabinets.

- Wardrobe, chest of drawers and one upholstered dining chair.
- Access to spiral staircase (fire exit) leading to area towards back of the kitchen and back door. This doorway is behind a door curtain.



Great Hall



The great hall is on the second floor and can be accessed via a spiral staircase from the hallway. This area has not been furnished and can be used only if desired and if access via the spiral staircase is accessible by members of the party.

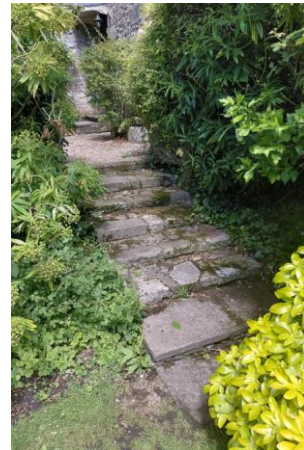
Garden

The large garden at Shute Barton comprises of:

1. Upper garden [2]: This is the first part of the garden guests will get to via the back door. This is a large, flat lawn with benches and chairs provided for seating. The lawn is accessed via some stone steps with no handrail [1].
2. Lower garden [3]: This is a large, mainly flat lawn with a short wall running through. This area is accessed by a grass slope from the upper garden.
3. Wild orchard [4]: This area is at the bottom of the garden and has been left by our garden team to grow wild flowers amongst the trees. There are access paths cut back through the plants.



Garden seating area accessed via door from dining room or medieval kitchen



[1] Steps to upper garden.



[2] Upper garden



[3] Lower garden



[4] Orchard

Additional Information

- Assistance dogs are welcome at all our cottages
- In the event of a fire, it is the responsibility of the guests to evacuate themselves. Vibrating fire/smoke detectors are available if requested at time of booking. Please contact us if you have any other specific access requirements in this respect.

Facilities at all cottages

The National Trust aims to expand the list of accessible /equipment/items available at each cottage and these may include:

- Cordless kettle
- Hollowfibre bedding
- Chair with armrests
- Good reading light
- Large handle vegetable peeler
- Easy tin opener
- Non-slip mat for bath/shower
- Non-slip place mat
- Information in alternative formats (on request)

Please note that we cannot guarantee that all items will be available at the time of your visit. Please enquire at the time of booking regarding any particular requests.

Specialist equipment

Other specialist equipment such as wheelchairs, bath seats, toilet frames etc may be available for loan or purchase from the local Red Cross loan centre. Please check this out before booking the Cottage and contact us if you require further information.

<http://www.redcross.org.uk/standard.asp?id=89425>



Future Plans to improve Access to National Trust Holiday Cottages

We are currently in the process of writing accessibility guides for all our holiday cottages and improving access over time for all our guests. All feedback is very helpful in informing us ways in which we can improve access to all our cottages. We welcome any comments or ideas from you about access at this cottage and thank you for taking the time to do this. Please do this in the most convenient way for you. See contact details below or information on website.

About the Accessibility Guide

This Accessibility Guide is intended to provide key information about the cottage that may be particularly relevant to guests with disabilities. It is reviewed annually. Please contact us prior to booking if you would like more detailed information and we will be happy to oblige.

Phone: 0344 800 2070

Email: cottages@nationaltrust.org.uk

Access for All at the National Trust

We continue to work to improve accessibility at all our holiday cottages. We welcome comments and ideas on improving access.

Phone: 0344 800 2070 Email: cottages@nationaltrust.org.uk

Date: June 2026