

National Trust Cottages Accessibility Guide

The Canyack

Bosorne
St Just
TR19 7NS

Ref: 011092



Introduction

The Canyack is a traditional, stone-built, miner's cottage. It sits on a hill above the secluded Cot Valley in West Cornwall. It is mainly constructed from rocks hewn from the hill to provide a level base.

The cottage is arranged as follows:

Ground floor

Hall, kitchen, sitting room, garden room

First floor

Bathroom and double bedroom

Pre-Arrival

- See the main webpage for booking and location details.
- Please contact us prior to booking if you have any specific access requirements.
- Directions provided with booking

Arrival & Parking Facilities

The cottage is on the narrow lane from the village of St Just to the Cot Valley, just past the hamlet of Bosorne. The car parking area is compacted earth and chippings beside the road. The path from the parking space winds 30 metres up the hill to the cottage above. The footpath is gravel and natural woodland ground cover and care should be taken not to trip or slip on loose ground, gravel or protruding roots. The path is lit on a two-way switch system. A tree branch overhangs the path on the approach to the cottage. There is plenty of headroom in the middle but the branch curves down low on the left side.



Parking space at the roadside and path up to the cottage

Getting in and out of the cottage

- The pathway comes out in front of the cottage. There are four stone steps (160mm high) up to the front door. No handrail. The key safe is on the wall to the left.
- There is an outside light, but we recommend you bring a torch so that you can see the key safe combination lock easily. Please return keys to the safe when you leave.

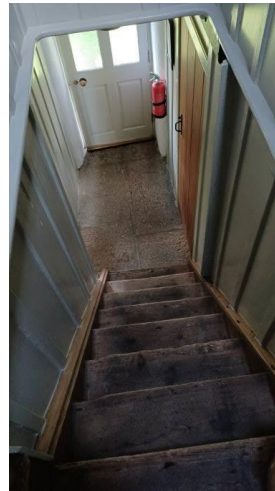
Getting around the cottage

Ground floor

- The front door opens inwards into a small hall with a stairway straight ahead to the first floor. One door off to kitchen/diner and an open doorway into the sitting room. From the sitting room another open doorway leads to the garden room which has a door to outside decking.

First floor

- Small landing at top of stairs leads up steps to the bedroom on one side and bathroom on the other



Left: Front door opens to hall with wooden staircase.

Right: Looking down the stairs into the hallway

Kitchen/diner (dual aspect)

- Solid wooden door (710mm wide) opens inwards from hall
- Stone flooring
- Rointe, wall-mounted electric heater
- Two wall lights. One ceiling light. Emergency rechargeable torch
- Sash window to front with deep sill/seat (640mm high)
- Window to rear
- Both windows have internal wooden shutters
- Kitchen floor cupboards with drawers
- Worktop is 920mm high
- Small wooden table (680mm wide x 840mm deep x 610 mm knee clearance)
- Two wooden chairs 460mm seat height
- Under counter fridge with small icebox
- Washer/dryer. Toaster. Microwave. Kettle
- Electric cooker with ceramic hob



Sitting room (dual aspect to garden room)

- Open doorway from hall (690mm wide)
- Stone flooring with rug
- Rointe, wall-mounted electric heater
- Woodburner
- Three wall lights and one table lamp
- Sash window with deep sill/seat to front aspect (550mm high)
- Window has internal wooden shutters
- Two-seater sofa (440mm seat height)
- Armchair (460mm seat height)
- Built-in bench seat with cushion (440mm high)
- Side table (520mm diameter x 710mm high)
- 32-inch TV with separate DVD player
- Roof beams (1930mm high)
- Understairs cupboard
- Open doorway through to garden room



Garden room (dual aspect)

- Open doorway from sitting room
- Stone flooring with rug
- Rointe, wall-mounted electric heater
- Four wall lights on a two-way switch.
- Sash window with deep sill to rear aspect (1000mm high)
- Pair of fixed roof lights
- Part-glazed 800mm wide rear door to decked area at back of cottage below rear garden
- Three-seater sofa (2000mm wide x 440mm seat height)
- Two wicker armchairs (460mm seat height)
- Round occasional table (750 diameter x 670mm high)
- Wooden storage box (1200mm wide x 350mm deep x 530mm high)



Stairway and first floor landing

- T-shaped stairway from hall to first floor with bathroom on left and bedroom on right
- Ceiling light on two-way switch
- Fixed roof light
- Wooden stairs with each step 700mm wide x 200mm high
- Eight steps to half landing. No handrail
- Two steps up to right to double bedroom
- Two steps up to left from half landing onto small top landing with door to bathroom



Left: No handrail but there is a ledge/dado rail

Right: Landing looking from bedroom door

Bathroom (single aspect)

- Solid wooden door (700mm wide) opens inwards from landing
- Wooden floorboards
- Five recessed downlights. Wall lights on each side of mirror
- Shaver socket
- Electric towel rail
- Rointe, wall-mounted electric heater
- Sash window with deep sill to west side aspect 800mm high. Internal wooden shutter
- WC 440mm seat height

National Trust

- Wash basin with twist taps (840mm high)
- Bath (650 wide x 1660mm long x 560mm high. Twist taps. No grips)
- Electric shower over bath with safety glass side panel
- Wooden chair 440mm seat height
- Built-in cupboard



Double bedroom (dual aspect)

- Solid wooden door (700mm wide) opens inward from stairway
- Wooden floorboards
- Three wall lights. Pair of bedside lamps
- Rointe, wall-mounted electric heater
- Sash window with deep sill/seat to front aspect 570mm high)
- Internal wooden shutters
- Built in wardrobe (1200mm wide)
- Pair of bedside cabinets 700mm high
- Chest of drawers (890mm wide x 500mm deep x 840mm high)
- Mirror on wall above chest
- Small wooden chair with rattan seat (440mm high)
- Iron bedstead (1400mm wide x 2000mm long x 600mm high)



Garden

- The garden is informal and is mainly undulating grassed area with trees and hedges along the boundary.
- There is a decking area just outside the garden room and a picnic table and bench.
- At the front of the cottage is a rotary dryer.
- The land rises up slightly behind the cottage and from the grassed area at the back there are great views of the sea in the distance



Left: side garden

Centre: Decking area outside garden room

Right: Sea views from garden at the back of the cottage

Additional Information

Facilities at all cottages

The National Trust aims to expand the list of accessible /equipment/items available at each cottage and these may include

- Cordless kettle
- Hollowfibre bedding
- Chair with armrests
- Good reading light
- Large handle vegetable peeler
- Easy tin opener
- Non-slip mat for bath/shower
- Non-slip place mat
- Easy jar opener
- Information in alternative formats (on request)

Please note that we cannot guarantee that all items will be available at the time of your visit. Please enquire at the time of booking regarding any particular requests.

Specialist equipment

Other specialist equipment such as wheelchairs, bath seats, toilet frames etc may be available for loan or purchase from the local Red Cross loan centre. Please check this out before booking the Cottage and contact us if you require further information.

<https://www.redcross.org.uk/get-help/borrow-a-wheelchair>

<https://www.redcross.org.uk/get-help/hire-a-toilet-aid>

Future Plans to improve Access to National Trust Holiday Accommodation

- We are currently in the process of writing accessibility guides for all our holiday cottages and bunkhouses and improving access over time for all our guests. All feedback is very helpful in informing us of ways in which we can improve access. We welcome any comments or ideas from you about access at this cottage and thank you for taking the time to do this. Please do this in the most convenient way for you. See contact details below or information on website.

About the Accessibility Guide

- This Accessibility Guide is intended to provide key information about the accommodation that may be particularly relevant to guests with disabilities. Please contact us prior to booking if you would like information that is more specific and we will be happy to oblige.

Email: holiday.enquiries@nationaltrust.org.uk

Phone: 0344 8002070

Access for All at the National Trust

- The Access for All office works to improve access at all National Trust accommodation and properties. The office welcomes comments and ideas on improving access.

Phone: 01793 818531

Email: accessforall@nationaltrust.org.uk

November 2022