

## National Trust Cottages Accessibility Guide



The Lieutenant's Quarter  
St Anthony's Head  
Roseland  
TR2 5HA

Ref: 011063

### Introduction

- The Lieutenants Quarter is the end cottage of three single storey cottages (formerly officers' quarters) located on St Anthony's Head.
- The kitchen and sitting room face out to sea, the bathroom and bedroom overlook the rear garden.
- The cottage has night storage heating, convector heaters and a multi fuel stove and a Rointe heater.
- Laundry facilities are in an outbuilding and shared with the other cottages.
- The land immediately around the cottage is reasonably flat and there is a firm and level footpath in front of the cottages.
- Please note the paths around the cottages and leading to the terrace can be slippery when wet. There are uneven steps in the front lawn and exposed manhole covers in the areas around the cottages

The Cottage is arranged as follows:

The kitchen/diner, sitting room, double bedroom and bathroom are all situated on the ground level.

### Pre-Arrival

- See the main webpage for booking and location details.
- Please contact us prior to booking if you have any specific access requirements.
- Directions provided with booking.
- Please bring a torch.

## Approach

- The cottage is approached via country lanes and sign posted St Anthony's Head.

## Arrival & Parking Facilities

- Parking is adjacent to the cottage; it is level and reasonably firm.
- The cottage is 8m from the parking place.
- There is a short gradual sloping stone path up to the veranda and the level of the front door.
- The key safe is on the left hand side of the door at a height of 142cm ffl (from floor level). It is operated by a combination lock mechanism.
- There is an outside light over the main door.



## Getting in (and out) of the cottage

- The main door has a clear opening width of 85cm.
- There is a wooden threshold.
- The door leads directly into the kitchen.
- There are no other doors leading outside.



## Getting around the cottage

- There is level access throughout.
- There is a vinyl floor covering in the kitchen and bathroom.
- There is carpet in the sitting room and bedroom.
- Internal doors have opening widths of 840 to 860mm

•

## Kitchen

- Directly off the main entrance.
- There is a door leading to sitting room.
- The height of the worktop is 930mm.
- There is an electric cooker which is 930mm high.
- There is a fridge freezer, microwave, cordless kettle and toaster.
- There is a central light fitting with 4 spot bulbs and internal cupboard lighting.
- The dining table and two chairs are in front of the window.
- The table has knee clearance of 570mm.
- The dining chairs are 460mm high.



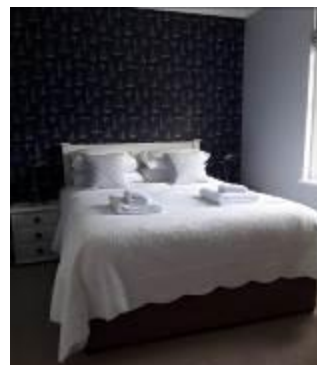
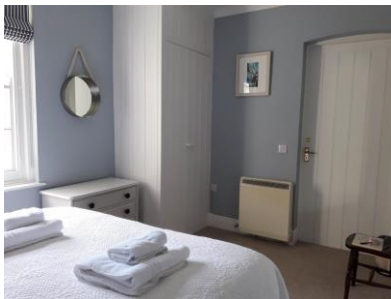
## Sitting Room

- The kitchen leads directly into the sitting room which has a further door to the bedroom.
- There is a multi-fuel stove.
- There are 4 ceiling spotlights, a table lamp and a standard lamp.
- There are two armchairs with cushions which have a seat height of 50cm.
- There is a TV with integrated DVD player.
- There is a radio.



## Double Bedroom

- Door to sitting room and further door to bathroom.
- Outlook over rear garden.
- The bed is 1530mm wide x 1930mm long x 700mm high.
- The clearance underneath the bed is 30mm.
- There are two table lamps on bedside tables which are 540mm high.
- There are four spot lights in ceiling.
- There is a built-in wardrobe with a clothes rail at 1600mm from floor level.
- The seat of the chair is 440mm high.
- There is a chest of drawers measuring 700mm high.



## Bathroom

- The bathroom is off the bedroom.
- The bath is standard – height is 570mm.
- There is a grab rail at 950mm from the floor of bath
- There is a shower with an opening of 530mm
- The shower tray measures 600mm x 600mm
- There is a grab rail at 800mm from the floor of the shower
- The WC is 430mm high.
- The basin is 860mm high.
- There are two ceiling spotlights and a light above the mirror.
- There is a chair seat height of 470mm.



## Laundry Room

There is a washing machine and tumble dryer in the outbuilding behind the cottages with external level access.

## Garden

- Open garden laid to grass and shared with the other two cottages.
- There is a wooden bench on the veranda.



## **Additional Information**

- Assistance dogs are welcome at all our cottages
- In the event of a fire, it is the responsibility of the guests to evacuate themselves. Vibrating fire/smoke detectors are available if requested at time of booking. Please contact us if you have any other specific access requirements in this respect.

## **Facilities at all cottages**

The National Trust aims to expand the list of accessible /equipment/items available at each cottage and these may include

- Cordless kettle
- Hollowfibre bedding
- Chair with armrests
- Good reading light
- Large handle vegetable peeler
- Easy tin opener
- Non-slip mat for bath/shower
- Non-slip place mat
- Easy jar opener
- Information in alternative formats (on request)

Please note that we cannot guarantee that all items will be available at the time of your visit. Please enquire at the time of booking regarding any particular requests.

## Specialist equipment

Other specialist equipment such as wheelchairs, bath seats, toilet frames etc may be available for loan or purchase from the local Red Cross loan centre. Please check this out before booking the Cottage and contact us if you require further information.

<https://www.redcross.org.uk/get-help/borrow-a-wheelchair>

<https://www.redcross.org.uk/get-help/hire-a-toilet-aid>

## Future Plans to improve Access to NT Holiday Cottages

- We are currently in the process of writing Accessibility Guides for all our holiday cottages and improving access over time for all our guests. All feedback is very helpful in informing us of ways in which we can improve access to all our cottages. We welcome any comments or ideas from you about access at this cottage and thank you for taking the time to do this. Please do this in the most convenient way for you. See contact details below or information on website.

## About the Accessibility Guide

- This Accessibility Guide is intended to provide key information about the cottage that may be particularly relevant to guests with disabilities. Please contact us prior to booking if you would like information that is more specific and we will be happy to oblige.  
Email: [holiday.enquiries@nationaltrust.org.uk](mailto:holiday.enquiries@nationaltrust.org.uk)  
Phone: 0344 8002070

## Access for All at the National Trust

- The Access for All office works to improve access at all National Trust cottages and properties. The office welcomes comments and ideas on improving access.  
Phone: 01793 818531  
Email: [accessforall@nationaltrust.org.uk](mailto:accessforall@nationaltrust.org.uk)

Date July 2022