

## National Trust Cottages Accessibility Guide

### **The Lodge at Parke**

Station Road,  
Bovey Tracey,  
Newton Abbot,  
Devon  
TQ13 9AU



Property Ref: 012015

### **Introduction**

The property is located at the entrance to the Parke estate. It is set back from a main road and surround by high hedges with an enclosed, private garden.

The Lodge sleeps up to 2 people in 1 bedroom, on one floor. There are internal steps down to the bathroom and to the kitchen. There are narrow door widths and heights within the property. The doorway to the sitting room slopes down and has a width of 680mm. The bathroom has a low sloping ceiling.

The property has electric wall heaters and a wood burner.

The Cottage is arranged as follows:

### **Ground floor**

Sitting/dining room with multi-fuel stove, double bedroom, steps to kitchen and bathroom

### **Pre-Arrival**

- See the main webpage for booking and location details.
- Please contact us prior to booking if you have any specific access requirements.
- Directions provided with booking

### **Approach**

The property is approached via a main road and sits behind a high hedgerow. The road is slightly widened at the gated entrance to the property, so it is possible to pull in, to open the gate to the parking area. Turning is tight into the property.

## Arrival & Parking Facilities

- There is hardstanding parking once through a gate and next to the property. It is suitable for one car
- The wooden driveway gate is at right angles to the road and has a width of 2450mm
- The path to the front door sits next to level lawn. It is gravel and has a width of 1250mm and gently slopes down to the property
- There is outside lighting by the front door but if arriving after dark it is advisable to have a torch



## Getting in (and out) of the cottage

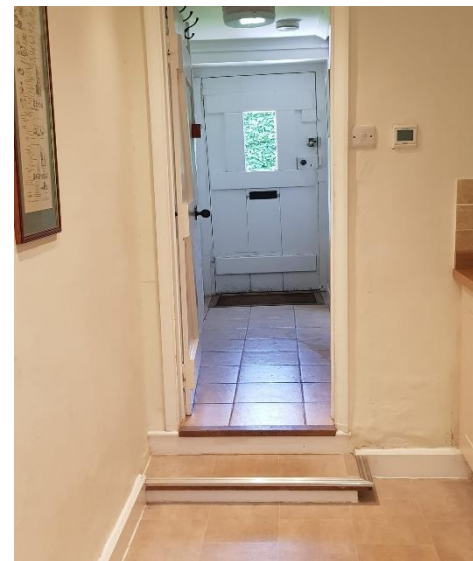
- Press combination key box located to the left of the front door at a height of 1650mm
- Front door width 880mm, height 1800mm
- Step up of 100mm to a tiled hallway with a sunken mat, hallway width 840mm



## Getting around the cottage

### Ground floor:

- The central hallway has an initial width of 840mm but widens to an area of 1000mm by 1800mm that gently slopes after the sitting room door, there is a ceiling light and no window so limited natural light
- The floor slopes down when entering the sitting room
- There are coat hooks in the hall, height 1900mm
- Two steps down to the kitchen step height 130mm and 120mm, with a tread of 260mm
- One step down into the bathroom 130mm



## Sitting Room/Diner

- Door width 680mm, height 1760mm, sloping threshold down into the room
- Carpet floor and rug
- Wood burner
- 1 x 2-seater settee, seat height of 460mm
- Two windows one with views over the side to the drive and hedge, the other to the front garden and beech hedge
- 3 x pairs of wall lights, 1 x table lamp with on/off switch on the cable
- Table height 750mm, clearance underneath 650mm
- 2 x upholstered dining chairs, seat height 450mm



## Double bedroom



- Door width 720mm, height 1750mm, level threshold
- Carpet
- Double divan bed width 1500mm, length 2000mm, height 660mm
- 2 x side tables, 2 x bedside lamps with on/off switch on the cable
- Ceiling pendant light
- Dual aspect windows overlooking the lawn and high hedge at the front and side garden
- Window seat with cushion, height 500mm, overlooking the front garden
- Wall hooks with hangers 1650mm, chest of drawers
- Good circulation

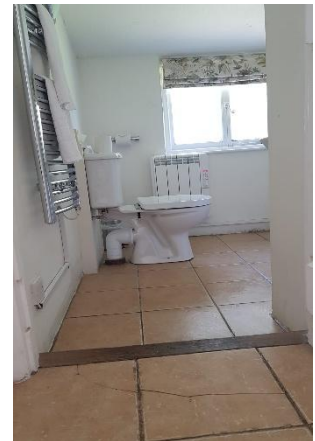
## Kitchen

- Door clearance width 600mm, height 1750mm
- Uneven steps down, step height 130mm and 120mm, tread of 260mm
- Continuation of tiling from the hall
- Height of worktop is 900mm
- Fitted kitchen with electric oven and ceramic hob, under counter fridge/freezer, microwave
- Sink with mixer twist taps with washers
- 6 x sunken spotlights in the ceiling
- Window over side garden
- Good circulation between worktop counters, sloping ceiling to one side but not restrictive



## Bathroom

- Door width 650mm, height 750mm
- Toilet, sink and bath with hand-held shower attachment
- Toilet height is 420mm with lever handle
- Bath height 570mm, twist taps with washers and hand held shower attachment
- Rubber anti-slip mat in the bath
- Sink height 820mm, twist taps with washers
- Shaver socket x 2 heights 1270mm and 1680mm
- Wall light and window over back garden
- Circulation around the bath 800mm,
- Low sloping ceiling, restrictive to be able to stand in the bath
- Sloping ceiling restrictive at the toilet, height 1720mm



## Garden

- Access to the garden is via the front door
- Lawn and high hedges surround the garden, so it is enclosed and private
- A large wooden picnic table is in the garden
- There is a coded gate that leads to the Parke estate



## Additional Information

- Assistance dogs are welcome at all our cottages
- In the event of a fire, it is the responsibility of the guests to evacuate themselves. Vibrating fire/smoke detectors are available if requested at time of booking. Please contact us if you have any other specific access requirements in this respect.



## Facilities at all cottages

The National Trust aims to expand the list of accessible /equipment/items available at each cottage and these may include

- Cordless kettle
- Hollowfibre bedding
- Chair with armrests
- Good reading light
- Large handle vegetable peeler
- Easy tin opener
- Non-slip mat for bath/shower
- Non-slip place mat
- Easy jar opener
- Information in alternative formats (on request)

Please note that we cannot guarantee that all items will be available at the time of your visit. Please enquire at the time of booking regarding any particular requests.

## Specialist equipment

Other specialist equipment such as wheelchairs, bath seats, toilet frames etc may be available for loan or purchase from the local Red Cross loan centre. Please check this out before booking the Cottage and contact us if you require further information.

<http://www.redcross.org.uk/standard.asp?id=89425>

## Future Plans to improve Accessibility to Nation Trust Holiday Cottages

We are currently in the process of writing accessibility guides for all our holiday cottages and improving access over time for all our guests. All feedback is very helpful in informing us of ways in which we can improve access to all our cottages. We welcome any comments or ideas from you about access at this cottage and thank you for taking the time to do this. Please do this in the most convenient way for you. See contact details below or information on website.

## About the Accessibility Guide

This Accessibility Guide is intended to provide key information about the cottage that may be particularly relevant to guests with disabilities. It is reviewed annually. Please contact us prior to booking if you would like more detailed information and we will be happy to oblige.

Phone: 0344 800 2070; Email: [cottages@nationaltrust.org.uk](mailto:cottages@nationaltrust.org.uk)

## Access for All at the National Trust

We continue to work to improve accessibility at all our holiday cottages. We welcome comments and ideas on improving access.

Phone: 0344 800 2070; Email: [cottages@nationaltrust.org.uk](mailto:cottages@nationaltrust.org.uk)

Date: May 2026