

National Trust Cottages Accessibility Guide

**The Lugger
The Harbour
Boscastle
Cornwall**



View from double bedroom

Cottage Ref: 011097

Introduction

- The Lugger is a second floor 2-bedroom apartment on the Harbour in Boscastle. Perched above the National Trust Shop and Cafe, it is one of 2 holiday apartments in this three-storey building.
- It is situated in the heart of the bustling quayside and has some views up towards the village and some downstream towards the headland.
- The cottage is heated by eco-electric radiators in the main rooms. Oil filled radiator in single bedroom and a heated towel rail in the bathroom.
- In the event of power failure emergency lighting is provided on the landings.
- There is a telephone for emergency calls at the top of the wooden staircase, on the first-floor landing. Mobile telephone signal in Boscastle depends on your network.

The accommodation comprises the following:

- Open plan kitchen/dining/sitting room, one double and one single bedroom, and a bathroom. There is a small, decked patio area with a garden table and 3 chairs outside the

front door and a shared garden area with a wooden bench and 3 wooden garden tables and chairs.

- The main bedroom has a double aspect window with view over rooftops towards the headland. This room comprises a 5' double, feature bed and the smaller bedroom, comprises a single bed.
- The bathroom has a bath with immersion fed mira shower over, a WC and wash hand basin.
- The apartment is furnished for three people plus cot and highchair.
- Most rooms have some sloping ceilings with very limited headroom.

Pre-Arrival

- See the main webpage for booking and location details.
- Please contact us prior to booking if you have any specific access requirements.
- Directions provided with booking.

Approach

- The drive down into Boscastle is relatively steep. The apartment is approached by a private, level road which runs along the riverside.

Arrival & Parking Facilities

- There is car parking for one vehicle in the car parking bay. The space which has an uneven gravelled surface is the middle one of three and is clearly marked The Lugger.
- The main entrance door to the apartment is approximately 150 metres from the car parking space. It is reached by walking over uneven ground up a slight incline past The Old Forge Gallery where you will find a wooden gate marked the garden for The Lugger and The Clinker. Proceed through the wooden gate which is lit by a PIR light, up the gravel and decked path to the front door of The Lugger.



Car parking spaces. The Lugger is the middle space



First part of walk to the garden gate



Sloping grassed area to garden gate



Walkway from garden gate to front door



Last part of walkway to front door



The Lugger front door

Getting in (and out) of the cottage

- The front door is approached by 3 steps of different height the highest being 250mm. There is no handrail to the steps. On entering the cottage there is a small step down of 50mm. The door has a clear opening width of 720mm.
- There is an external PIR light above the door and a light switch just inside the front door to the right at a height of 1360mm.
- The key safe to The Lugger is to the left of the front door at a height of 1500mm. It is operated by a combination lock mechanism where the dials need to be turned to the cottage combination code. A torch is recommended, especially if arriving in the dark, as the numbers on the lock can be difficult to see. The key inside will open the front door.



The Luggar front door showing steps up to threshold

Getting around the cottage

Second floor:

- The front door opens into the kitchen/dining room with a storage cupboard. The kitchen leads into the sitting area, off which are two doors one leading to the bathroom and one leading to a landing area. This landing area has three doors, one leading to a cupboard with a hot water cylinder, one to the double bedroom and the other to the single bedroom. This landing also leads to the apartments fire escapes. These are down 12 steps with a height of 200mm, then through a fire door which in turn leads onto a landing off which can be found the fire escapes. The handrail for these first stairs is on the left-hand side and the handrail has a height between 950mm and 1000mm from each tread.
- One of the fire escape is through another door and down a 13-step wooden staircase, the height of the steps are 190mm. the handrail is on the left-hand side of the stairs at a height of between 850mm and 900mm from each tread. These stairs lead to the main exit door. The other fire escape is to the right of The Clinker front door. This escape route has a metal handrail on the left-hand side and there are 15 metal treads with a height of 200mm down to the National Trust Courtyard.
- Level access throughout the cottage apart from stairs to fire escapes and thresholds of 20mm to bathroom and double bedroom.
- Vinyl flooring in the kitchen/dining area and bathroom.
- Carpet in sitting room hallway, stairs, and bedrooms.
- Internal doors have a minimum opening width of 670mm.



The landing looking from the double bedroom towards the sitting room



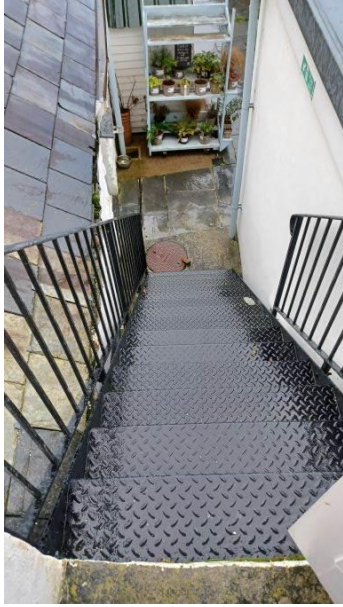
The Lugga stairgate in place on the landing



Landing off the sitting room looking down the stairs towards the first floor (fire exits).



Below is the fire escape that goes down to the National Trust Courtyard



Looking down fire escape



Looking up fire escape



Looking towards fire escape from courtyard

Open plan kitchen/dining room

- The light switch is to the right of the front door at a height of 1450mm.
- Centre light fitting with three individual lights and down lighters over worktops.
- Storage cupboard with an opening width of 670mm and a height of 1620mm.
- Heights of worktops are 930mm from floor level.
- Stainless still sink with lever mixer taps.
- Integrated electric cooker with single oven and grill.
- Induction hob.
- Integrated slim line dishwasher.
- Microwave.
- Integrated larder fridge.
- Toaster and cordless kettle.
- Combined washer/dryer in the storage cupboard.
- Wooden, fold down dining table and three chairs (no arms).
- Table has a knee clearance of 610mm.
- Dining chair with a seat height of 440mm and back height of 380mm...
- Velux window with view upstream towards the village.



Sitting Area

- Light switches at both ends of sitting area at a height of 1300mm.
- There is a centre light fitting with three individual lights, a floor lamp and one table lamp.
- Double aspect window with views towards headland.
- Two-seater sofa with seat and back height of 430mm.
- Feature chair with a seat height of 420mm and a back height of 500mm.
- Small pine unit with drawers and cupboard under.
- 32" TV separate DVD player.
- Radio reception via TV.



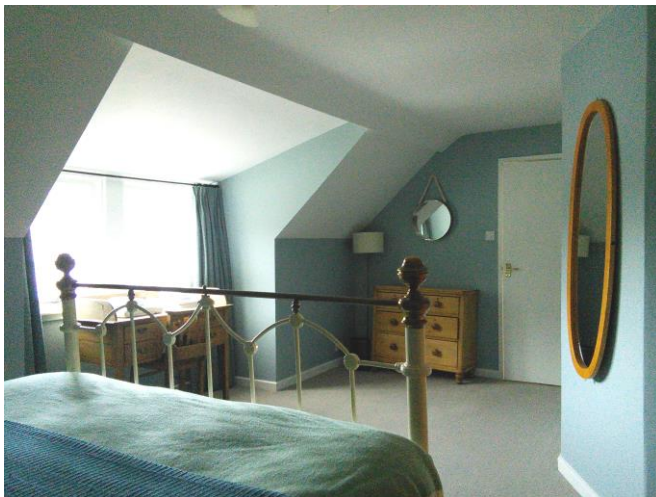
Bathroom

- The light switch is in the sitting area to right of bathroom door at a height of 1320mm.
- The room is lit by recessed LED spotlights.
- Electric ladder towel rail.
- Standard size bath with mixer lever taps, hand grips and immersion fed mira shower above.
- The shower controls are at a height of 1120mm.
- Bath is 600mm high.
- WC with push flush and a seat height of 430mm.
- Hand basin is 817mm high with mixer lever tap.
- Mirror with light and shaver point.
- Wooden chair with seat height of 440mm and back height of 380mm.
- Sloping ceiling with limited head height.



Double Bedroom

- Door off landing is 700mm wide.
- The light switch is to the right of the bedroom door at a height of 1300mm.
- There is a centre light fitting with three individual lights over the bed.
- Double aspect window with view over rooftops towards headland.
- Cast Iron style 5' bed with a firm mattress.
- Bed length is 1990mm, bed height of 700mm with firm mattress.
- Two bedside cabinets with bedside lamps.
- Free standing double wardrobe with a hanging at a height of 1650mm.
- Dressing table with limited knee height of 480mm, drawers and a table lamp.
- Wooden chair with seat height of 440mm and back height of 380mm.
- Four drawer chest.
- Wall mounted oval wall mirror.
- Sloping ceiling with limited head height.



Single Bedroom

- Door off landing is 700mm wide.
- The light switch is to the right of the bedroom door at a height of 1080mm.
- There are 3 recessed ceiling lights.
- Velux window with view upstream of river and cottages.
- Cast Iron style 3' bed with a firm mattress.
- Bed length of 1900mm, bed height 740mm with a firm mattress.
- Sloping ceiling over bed with limited head height.
- Bedside cabinet with bedside lamp.
- Four drawer chest with freestanding mirror.
- Wooden chair with seat height of 440mm and back height of 380mm.



Garden

- Outside the front door there is a small decked private patio area with a wicker style garden table and 3 chairs. The table has a knee clearance of 700mm, the chairs have a seat height of 450mm and a back height of 550mm.
- In addition, there is a shared lawned garden area with wooden garden tables and chairs...
- The tables have knee clearance of 690mm, and the armed chairs have seat height of 440mm and a back height of 460mm.



Decked area just outside front door





Shared garden

Additional Information

- Assistance dogs are welcome at all our cottages
- In the event of a fire, it is the responsibility of the guests to evacuate themselves. Vibrating fire/smoke detectors are available if requested at time of booking. Please contact us if you have any other specific access requirements in this respect.
- Mobile telephone signal is very unreliable in Boscastle and depends on your network.
- Carpets are 80/20 wool/manufactured fibres.
- Duvets and pillows are made of hollowfibre.
- Cushions are hollowfibre.

Facilities at all cottages

In addition to the standard equipment and facilities, each cottage is equipped with the following:

- Cordless kettle
- Chair with armrests in sitting room.
- Good reading light
- Non-slip mat for bath/shower
- Information in alternative formats (on request)

We aim to provide these items in all cottages but please check when booking as to their availability and to check if new items have been added to the list.

Specialist equipment

Other specialist equipment such as wheelchairs, bath seats, toilet frames etc may be available for loan or purchase from the local Red Cross loan centre. Please check this out before booking the Cottage and contact us if you require further information.

<https://www.redcross.org.uk/get-help/borrow-a-wheelchair>

<https://www.redcross.org.uk/get-help/hire-a-toilet-aid>

Future Plans to improve Access to National Trust Holiday Cottages

- We are currently in the process of writing accessibility guides for all our holiday cottages and improving access over time for all our guests. All feedback is very helpful in informing



us of ways in which we can improve access to all our cottages. We welcome any comments or ideas from you about access at this cottage and thank you for taking the time to do this. Please do this in the most convenient way for you. See contact details below or information on website.

About the Accessibility Guide

- This Accessibility Guide is intended to provide key information about the cottage that may be particularly relevant to guests with disabilities. Please contact us prior to booking if you would like information that is more specific, and we will be happy to oblige.
Email: holiday.enquiries@nationaltrust.org.uk
Phone: 0344 800 2070

Access for All at the National Trust

- The Access for All office works to improve access at all National Trust cottages and properties. The office welcomes comments and ideas on improving access.
Phone: 01793 818531
Email: accessforall@nationaltrust.org.uk

November 2022