

National Trust Cottages Accessibility Guide

**The Old Farmhouse
Pentireglaze
Polzeath
Cornwall**



Cottage Ref: 011109

Introduction

- The Old Farmhouse is approximately two hundred metres from the main visitor hub for Pentire. Facilities which include a cafe with indoor and outdoor seating, parking for cars and bikes, disabled toilets, a changing room, and Trampler hire. There is guidance on local accessible trails for those using buggies, mobility scooters and wheelchairs. More details can be found at: www.nationaltrust.org.uk/pentire Click Facilities / Access
- In an elevated position with sweeping countryside views and glimpses of the sea, The Old Farmhouse is part of a substantial farmhouse that has recently been converted into holiday accommodation.
- It has an internal link into the adjoining Overhaven cottage, for those wishing to mingle with friends or family. The Old Farmhouse is part of a farm hamlet with a working farm close by.
- In the event of power failure emergency lighting is provided on the landing and in the hallway.

The accommodation over two floors comprises the following:

Ground Floor

- A large porch with bench seating leads to the front door.
- The front door opens into a wide hallway with doors leading off to the dining room, sitting room and kitchen. There is further locked door which opens into a small passage to Overhaven next door.
- The stairs are straight ahead.

First Floor

- Bathroom with beam and sloping ceiling. Three bedrooms: en-suite double bedroom, single bedroom, double bedroom which can be a twin upon request.

Pre-Arrival

- See the main webpage for booking and location details.
- Please contact us prior to booking if you have any specific access requirements.
- Directions provided with booking.

Approach

The approach is via country lanes. The main entry to the site is at a crossroads opposite a campsite. It is the second right turn after the National Trust's Lundy Bay car park. The entrance road leads past the main visitor hub.

Arrival & Parking Facilities

- There is parking for two cars. One car can be parked next to the cottage's white double gate. This is on a grassy slope. The front door is approximately 23 metres from the car parking space along a level, gravelled path.
- The second car parking area is a rough, reasonably level, gravel surface with a relatively steep slope down to the cottage's gate. A distance of approximately 50metres.
- The key safe is to the right of the front door in an alcove in the porch at a height of 1570mm is operated by a combination lock mechanism, where the dials need to be turned to the cottage combination code. There is a sensor light above the door. A torch is recommended, especially if arriving in the dark, as the numbers on the lock can be difficult to see.



Gates to The Old Farmhouse



Path looking towards gate



Path to Porch and front door

Getting in (and out) of the cottage

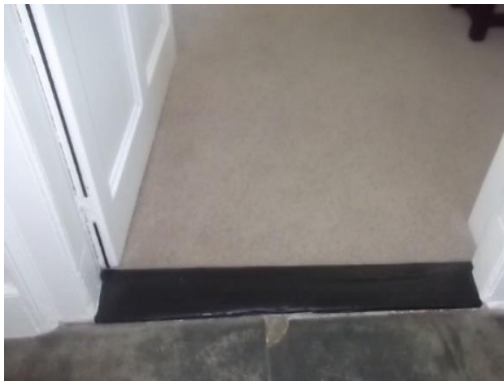
- There is a step up to the porch which is 180mm and another step to the front door which is 260mm.
- There is a further step over the threshold of 120mm.
- The clear opening width of the front door is 1070mm
- The door opens into an entrance hallway which narrows to 1250mm.
- The light switch is on the left-hand side as you enter at a height of 1400mm.
- The linked access from the hallway to the adjoining cottage has two doors with clear opening widths of 750mm.



Getting around the cottage

Ground floor:

- There are various floor coverings ranging from stone in the entrance hall, carpet and a rug in the sitting room, carpet in the dining room and vinyl floor tiles in the kitchen.
- There is an uneven threshold and a step of 60mm down into the dining room and an uneven threshold and a step of 40mm into the sitting room.



Step down to dining room



Step down to sitting room

- There is a slot in stairgate for the bottom of the stairs. This is kept in the Dining room.



Step down from hall to kitchen

- There is a door leading into the kitchen with a step down of 150mm.
- There is a door to neighbouring cottage – locked unless both cottages are booked together.
- Minimum internal door opening widths on ground floor is 860mm.



Hallway looking towards first flight of stairs

First Floor

- Staircase with handrail to left hand side. The handrail has a height of 760mm from each tread,
- Six stairs to half landing and then six stairs to first floor, step heights 170mm and 1 of 200mm.
- Minimum width of stairs is 700mm.
- Minimum door opening width is 700mm.

- The light switch for the landing is to the right of the kitchen door at a height of 1400mm.
- The bathroom leads off the landing area.
- There is a small step up to the bathroom of 50mm.
- There is a step with a height of 200mm from the landing area to access the bedrooms.
- Stairs, bedrooms, and landing are carpeted with vinyl flooring in the bathroom.
- Slot in stair gates provided for the top and bottom of the stairs.



The landing is on two levels



Top of stairs to landing

Kitchen:

- The kitchen is approached from the hall with a step down of 150mm into the room.
- Height of worktop is 930mm from floor level.
- Stainless steel sink Swan neck lever taps
- Built in double oven with grill, at height of between 900mm-1750mm.
- Separate induction hob, cooker hood with light above.
- Microwave, cordless kettle, and toaster.
- Integrated Fridge and separate freezer.
- Integrated dishwasher.
- Integrated washer/dryer.

National Trust

- Nine recessed spotlights on the ceiling and under counter lighting.
- Light switch is to the right of kitchen door at a height of 1400mm
- Small kitchen table with three slatted backed chairs without arms.
- There is a knee clearance of 570mm below table. Chair seat height 470mm back height of 460mm.
- Window overlooking courtyard to Overhaven with a deep windowsill – note this is difficult to reach as it is deeply recessed behind the sink.



Dining room:

- Uneven threshold with very small step down of 60mm into the room.
- Mahogany dining table with a knee clearance of 580mm.
- Four spoon back upholstered seated chairs, without arms, Seat height of 450mm and back height of 450mm
- One carver chair. Seat height of 430mm back height of 550mm.
- Window offering ample natural light, looking over garden and countryside.
- Mahogany dresser.
- Large wall mirror.
- Roberts radio.
- Three double glass wall lights and one floor lamp.
- Light switch is to the left of door at a height of 1350mm.



Sitting Room

- Open fire with a nursery guard and spark guard provided.
- Window offering ample natural light, looking over garden and countryside.
- Two, two-seater sofas with seat height 470mm, back height of 470mm and a high back chair with a seat height of 450mm back height 700 mm. Several cushions.
- Lighting comprises, one table lamp and three, double wall lights.
- Main light switch is 1350mm to right of door.
- 26"TV with integrated DVD.





Double Bedroom (or twin)

- 6'/1900mm double divan bed x 2000mm long x 700mm high.
- The bed can be twin upon request.
- The bed is in a centralised position.
- Minimum space between bed and walls 450mm.
- The clearance below the base of the divan to floor level of 50mm.
- Built in wardrobe with a hanging rail height of 1500mm.
- There is a large, bow fronted, five drawer chest
- Large wall mirror.
- Two bedside cabinets with bedside lights.
- One double wall light.
- Light switch is to the right of the door at a height of 1340mm.
- Small rocking chair with a seat height of 430mm and back height of 620 mm.



Bathroom

-
- Step into bathroom at a height of 50mm.
- Deep bath which is 600mm high. There are no handgrips or anti-slip on the bath, but an anti-slip bathmat is provided. Inside bath 1300mm
- There is a handset with combined shower attachment over the bath.
- Separate shower with a high step into the cubicle height of step 280mm.
- Shower controls at a height of 1050mm.
- Hand basin is 850 mm high with lever taps.
- Mirror and shaver point. Light above
- WC is 420 mm high with push button flush.
- Lighting five led recessed spotlights.
- Light pull cord is to the left of the door at a height of 900mm.



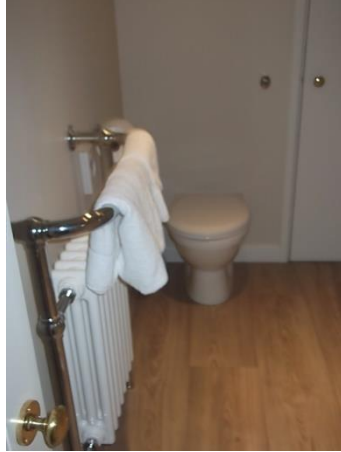
Master bedroom with en-suite

- 5'1520mm double divan bed x 2000mm long x 700mm high.
- Clearance below the base of the divan to floor level of 50mm.
- Two bedside cabinets with bedside lamps.
- Chest of drawers with oval mirror above. The mirror is wall hung at a height of 1100mm from floor level.
- Bed in central position with good circulation space around bed.
- Slatted backed oak chair with a seat height of 400mm and a back height of 570mm.
- Fireplace in the room which is for decoration purposes only.
- Two double wall lights.
- Light switch is to right of door at a height of 1350mm.
- Low window with countryside views.
- Built in cupboard for hanging clothes at a 2070mm from floor level.



En-suite shower room

- Ensuite door clearance 520mm
- The light switch is located outside door to shower at a height of 1330mm
- Corner shower unit with electric shower.
- Step up into the shower of 150mm.
- Minimum shower door clearance 350mm.
- Shower controls at a height of 1650mm.
- Hand basin with a height of 850mm.
- Mirror and shaver point with light above.
- The WC is at a height of 410mm high with a push flush.
- Three recessed LED ceiling spotlights.
- Towel rail - switch for towel rail is in the main bedroom at low level on the wall behind the door.



Single bedroom

- 3'/900mm single bed x 6'3/1900mm long x height of 26"/670mm.
- The bed is located against one wall.
- The height from divan base to floor level the height is 50mm
- There is a low window with countryside views
- Four drawer chest with integrated mirror
- Small, pine bedroom chair with a seat height of 450mm and back height of 400mm.
- Double wall light above dressing table.
- Bedside cabinet with bedside lamp.
- Light switch is to the left of the door at a height of 1350mm.
- Rack to hang clothes at a height of 1500mm from floor level.



Garden

- Level garden which is partly shared with Overhaven.
- Garden furniture, oblong wooden table with knee clearance of 600mm.
- Three wooden chairs with arms seat height and back height of 460mm and wooden bench with a seat height of 440mm.

- Log box to the side of the porch.



Additional Information

- Assistance dogs are welcome at all our cottages.
- In the event of a fire, it is the responsibility of the guests to evacuate themselves. Vibrating fire/smoke detectors are available if requested at time of booking. Please contact us if you have any other specific access requirements in this respect.
- Mobile phone signal is not reliable in the cottage but usually some signal can be found in the car parking area.
- There is access to a telephone for emergency use in the nearby National Trust Property Office, or the Visitor hub usually available during office hours.
- Carpets are 80/20 wool/man-manufactured fibres.
- Duvets and pillows are made of hollowfibre.
- Cushions are hollowfibre.

Facilities at all cottages

In addition to the standard equipment and facilities, each cottage is equipped with the following:

- Chair with armrests in sitting room.
- Good reading light.
- Non-slip mat for bath/shower.
- Information in alternative formats (on request).

We aim to provide these items in all cottages but please check when booking as to their availability and to check if new items have been added to the list.

In the Old Farmhouse, please pre-request a large handle vegetable peeler and an easy jar opener.

Specialist equipment

Other specialist equipment such as wheelchairs, bath seats, toilet frames etc may be available for loan or purchase from the local Red Cross loan centre. Please check this out before booking the Cottage and contact us if you require further information.

<https://www.redcross.org.uk/get-help/borrow-a-wheelchair>

<https://www.redcross.org.uk/get-help/hire-a-toilet-aid>

Future Plans to improve Access to National Trust Holiday Cottages

- We are currently in the process of writing accessibility guides for all our holiday cottages and improving access over time for all our guests. All feedback is very helpful in informing us of ways in which we can improve access to all our cottages. We welcome any comments or ideas from you about access at this cottage and thank you for taking the time to do this. Please do this in the most convenient way for you. See contact details below or information on website.

About the Accessibility Guide

- This Accessibility Guide is intended to provide key information about the cottage that may be particularly relevant to guests with disabilities. Please contact us prior to booking if you would like information that is more specific, and we will be happy to oblige.
Email: holiday.enquiries@nationaltrust.org.uk
Phone: 0344 800 2070

Access for All at the National Trust

- The Access for All office works to improve access at all National Trust cottages and properties. The office welcomes comments and ideas on improving access.
Phone: 01793 818531
Email: accessforall@nationaltrust.org.uk

October 2022