

National Trust Cottages Accessibility Guide

The Old Radar Station

Stonebarrow

Dorset

Property Ref:



Introduction

The property is an old MOD radar station and adjoins a National Trust information point. Within the shared grounds there is a pop-up café that runs seasonally. Sleeps up to 8 people in 2 bedrooms. 1 double bedroom, second room 2 x bunkbeds sleep 6. Accommodation is all on one level floor. There are heavier self-closing fire doors within the property. The property has night storage heaters and supplementary fan heaters in the bedrooms, kitchen, and bathroom. There is a communal shower room. The property is arranged as follows:

Ground floor

Entrance hall, cloak room with toilet, dining room with one large table and benches, sitting room, well equipped kitchen, 1 double bedroom and a second bedroom with bunk beds, communal shower room with two showers and toilet.

Pre-Arrival

- See the main webpage for The Old Radar Station ([The Old Radar Station Dorset | National Trust](#)) for booking and location details.
- To enable our housekeepers to prepare the cottage for any particular accessibility requirements you might have, please contact guestrelations@nationaltrust.org.uk.
- Directions are provided electronically three weeks prior to travel. If you need a printed (or large print) version of any of our holiday documents, please contact guestrelations@nationaltrust.org.uk.
- If, having read this accessibility guide, you still require further information, e.g. a social storybook guide, please contact guestrelations@nationaltrust.org.uk

Approach

The property is approached initially by a steep narrow lane enclosed by hedging. Once at the top, the lane widens and becomes more open and is level.

Arrival & Parking Facilities

- Parking is available for four cars outside of the perimeter fence to the front of the bunkhouse some 25 meters away from the front door
- It is possible to unload/load closer to the bunkhouse entrance.
- There is outside lighting by the front door but if arriving after dark it is advisable to have a torch.



Getting in (and out) of the cottage

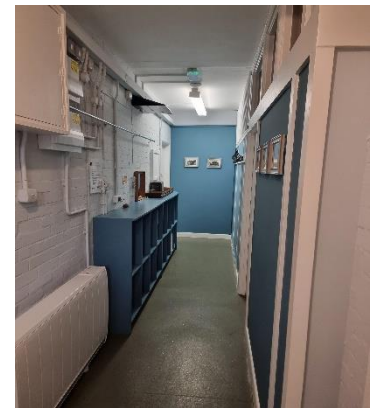
- There is a gate to enter the grounds of the property which is locked during out of hours for the information centre and the pop-up café.
- Front door width 730mm, metal weather shield threshold, height 70mm
- Key box to the left of front door with dial combination lock, height 1270mm
- Leads into a narrow hallway 800mm by 1300mm, linoleum floor, with rubber backed mats.



Getting around the cottage

Ground floor:

- Back hall width 880mm with fitted box storage shelving and coat hooks, height 1700mm
- Strip light no windows.
- Linoleum flooring with rubber backed mats. Carpet in bedrooms and sitting room.
- Level flooring throughout
- There are heavier self-closing fire doors within the property.



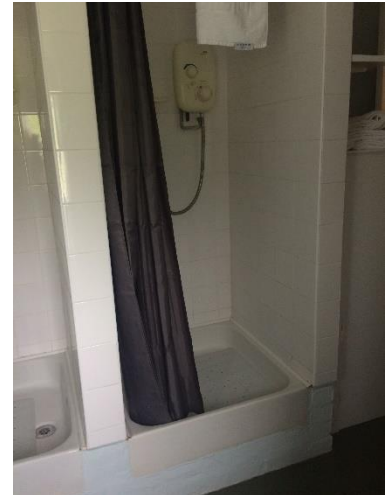
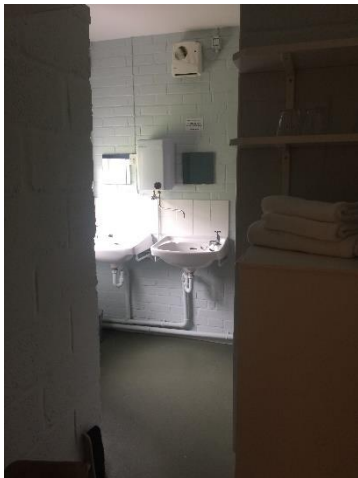
Toilet/Cloakroom

- Door width 730mm, no threshold
- Linoleum floor
- Toilet height 430mm, lever flush
- Sink height 830mm, cold twist taps with washers and a hot water cylinder twist tap
- Circulation width 910mm, 1260mm between toilet and sink
- Ceiling light, no window, half glazed door



Communal Shower Room with Self-contained Toilet Cubicle

- Door width 730mm, no threshold, narrowing to 660mm before opening up
- Linoleum floor
- 2 x Shower cubicles with curtains, tray height 330mm, rubber anti-slip mats
- Electric showers, height 1400mm
- 2 x sinks, height 870mm, twist taps with washers and a shared hot tap connected to a wall mounted hot water heater
- 1 x ceiling light, frosted window
- Separate toilet cubicle within room, no light but gap at the top of the door
- Toilet door width 750mm, circulation 810mm
- Toilet height 43mm, lever flush



Kitchen

- Door width 660mm, no threshold
- Linoleum flooring
- Height of worktop 920mm
- Fitted kitchen with electric single oven and ceramic hob, fridge/freezer, dishwasher, microwave, washer/dryer
- Sink with twist taps and ceramic washers
- Ceiling strip light
- Window with views over back lawn and picnic benches
- Good circulation, 1070mm
- Self-closing door



Dining Room

- Door width 800mm, no threshold
- Linoleum
- Table height 770mm, clearance height underneath 710mm
- 2 x bench, seat height 460mm
- 2 x single bench seat height 460mm
- 1 x dining chair, seat height 430mm
- Vital baby highchair seat height 580mm
- Window with views over side of vegetation and shrubs
- Hatchway through to living room, height 1220mm
- Ceiling strip light
- Good circulation
- Self-closing door



Sitting Room

- Door width 730mm, no threshold, heavier self-closing fire door
- Carpet
- 2 x 2-seater rattan settees with cushions, seat height 420mm
- 2 x rattan armchairs with cushions, seat height 420mm
- 2 x windows with views through picket fence to clifftop and vegetation
- 2 x ceiling strip lights, 2 x angle poise floor lamps with on/off foot switch on the cable
- 1 x double wall sockets, 1000mm
- Self-closing door



Bedroom 1

- Door width, 730mm, no threshold, self-closing heavier fire door
- Carpet
- Double bed
- Bed width 1320mm, length 1920mm, height 560mm
- 1 x ceiling lights
- Window with views over front cliff top and vegetation
- 1 x chair, seat height 430mm
- 8 x clothes hooks, 1600mm from floor (4 beside bed, 4 behind door)
- 2 x wall lamps (either side of bed) 1100mm from floor
- 2 x double sockets with 2x USB 220mm from floor (either side of bed)
- 2 x small shelves (either side of bed) 1020 high from floor 70mm deep, 400mm long
- Self-closing door



Bedroom 2

- Door width 730mm, no threshold
- Carpet
- Identical bunk beds width 900mm, 1900mm, height 470mm, space under height 210mm
- Top Bunk height 1300mm, with mattress 1560mm with additional wooden safety rail
- Vertical side ladders, first step height 610mm, 240mm, 240mm then 600mm
- Ceiling light
- 4 x poise wall lamps by all beds
- 4 x small shelves with each bed (dimensions same as bedroom 1)
- Window with views over lawn and picnic tables
- Space between bunk beds 940mm, no space at the end.
- Self-closing door





Holidays

Garden

- The garden is a grassed area and unenclosed.
- Picnic tables and barbecue
- Shared space with the public when the shop is open.





Holidays

Additional Information

- Assistance dogs are welcome at all our cottages. If you are bringing an assistance dog to a non-dog cottage, please contact guestrelations@nationaltrust.org.uk so we may contact all future guests in case of an allergy.
- In the event of a fire, it is the responsibility of the guests to evacuate themselves. Under pillow vibration alarms are available if requested at time of booking.
- If you required the WiFi to be turned off, please advise us in advance.
- If you have any allergies, please contact guestrelations@nationaltrust.org.uk.

Specialist equipment

Other specialist equipment such as wheelchairs, bath seats, toilet frames, hoists etc. may be available for loan or purchase from a local disability equipment provider. For further details, please contact guestrelations@nationaltrust.org.uk. Please note that any contacts supplied are done so in good faith and are not endorsed by the National Trust.

Feedback

All feedback is very helpful in informing us of ways in which we can improve access to all our accommodation. We welcome any comments or ideas from you to guestrelations@nationaltrust.org.uk.

Photographs by:

April 2023

