

National Trust Cottages Accessibility Guide

The Potters Cottage
Castle Ward
Strangford

Downpatrick
BT30 7LS

Ref: 019001



Introduction

The Potters Cottage is a single story, two-bedroom cottage located in the lower farmyard of Castle Ward Estate.

The Cottage is arranged as follows:

Ground Floor:

- Kitchen, sitting/dining room, double bedroom with adjoining en-suite with walk in shower, single bedroom, bathroom with shower over bath.

Pre-Arrival

- See the main webpage for booking and location details.
- Please contact us prior to booking if you have any specific access requirements.
- Directions provided with booking.
- Please bring a torch if arriving after dark.

Approach

- Single track tarmac road through the estate with five speed ramps.

Arrival & Parking Facilities

- Parking available at the rear of the cottage with two designated parking spots, which are sign posted.
- The key safe is located on the right-hand side of the front door, 1500mm high from the ground.
- Parking in gravel courtyard with a small walk leading to cottage front door.

Getting in (and out) of the cottage

- Front door is 980mm wide, into a level access laminate living/dining room.
- Rear door is 980mm wide, with access to the refuse area and garden.

Getting around the cottage

Ground Floor

- Level access throughout the ground floor.
- Floor surfaces are a mixture of carpet and laminate flooring.
- Internal door widths are 700mm wide.

Living / Dining Room

- Wooden dining table 720mm high with 590mm clear knee space underneath.
- Six wooden chairs for dining table are 450mm high with backrest.
- Dining area with wooden dining table 710mm high with 660mm clear knee space underneath.
- Room has one 3-seater lounge 440mm and two single loungers with seat height of 500mm, with a wood stove burner.
- Wooden coffee table in centre of room at 500mm high.
- TV on a cabinet in corner at height of 520mm.



Kitchen

- Door access is 700mm wide into level laminate flooring.
- The kitchen has fitted units with gas cooker, combination washing and drying machine, fridge (including ice box), dishwasher and microwave. Kitchen worktop is 910mm high.
- Overhead lighting.
- Breakfast bar at 910mm high with two wooden stools which are 935mm high, with clear knee space of 210mm, sturdy backrest on stools also.

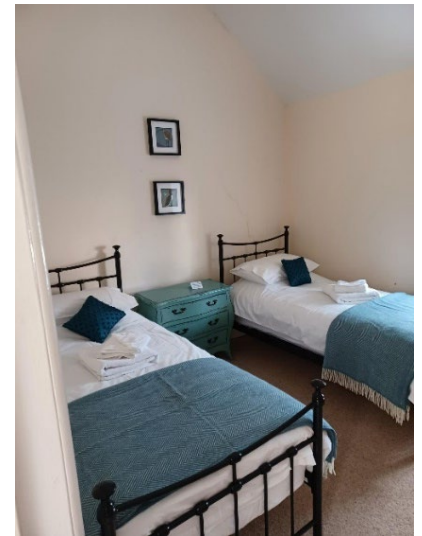


Utility Room

- Small utility room, door 730mm wide.
- Utility Room contains the washing machine, iron, ironing board, mob and bucket.
- Clearing from the door opening 300mm.

Twin Bedroom

- Door 700mm wide.
- Carpeted floors.
- Two single beds, 620mm high x 2000mm long x 1000mm wide. 250mm space under both beds.
- Locker between both beds with 2 bedside lamps on it. Overhead lighting in bedroom also.
- Wooden chair 460mm.

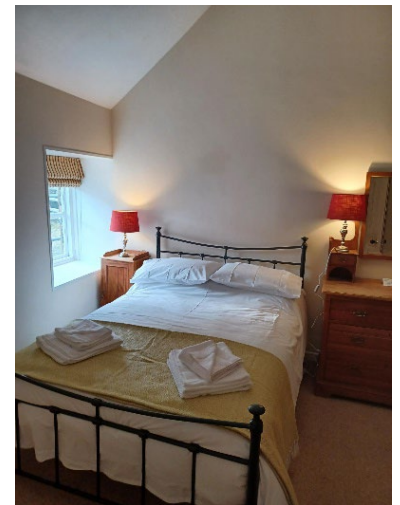


Ensuite Bathroom

- En-suite off the twin bedroom, door width 630mm, vinyl flooring.
- Ensuite comprises of wash basin, toilet, free standing bath with shower within it.
- Bath with overhead shower, 560mm high x 780mm wide x 1730mm long.
- Wash basin is 830mm high.
- Toilet is 440mm high.
- Heated towel rail is 860mm x 600mm.

Double Bedroom

- Door 730mm wide, carpet flooring
- Bed is 1400mm wide x 2000mm long x 620mm high, under height is 250mm with no storage space.
- Narrow access to one side of the bed, which is closest to the wall, clearing of 420mm.
- Chest of drawers to one side of the bed which is 200mm x 910mm x 1100mm.
- Free standing double wardrobe.



Ensuite Bathroom

- Door 730mm wide, into vinyl flooring
- Ensuite comprises of wash basin, toilet, and separate shower.
- Step into the shower is 150mm.
- Shower door access width 400mm.
- Shower unit controls are 1530mm high.
- Wash basin 820mm high.
- Toilet 450mm high.
- Overhead ceiling light.
- Heated towel rail.
- Mirror above basin.

Garden

There is an enclosed designated garden area at the rear of the cottage for the guests to enjoy.

- Back door 980mm.
- Step at back door has an 80mm drop.
- Narrow path to higher level of garden has a slight step-up which goes from its lowest point of 240mm to its highest point which is 320mm.
- Rear access through gates to garden. Each gate is 1300mm wide with a total width of 2600mm and an overall height of 1700mm.
- Garden furniture: Metal chairs (x 4) seat height 440mm plus metal table. 720mm high x 940mm wide.
- The surface area in the garden is rough textured concrete.



Additional Information

Facilities at all cottages

The National Trust aims to expand the list of accessible /equipment/items available at each cottage and these may include.

- Cordless kettle
- Hollowfibre bedding
- Chair with armrests
- Good reading light
- Large handle vegetable peeler
- Easy tin opener
- Non-slip mat for bath/shower
- Non-slip place mat
- Easy jar opener
- Information in alternative formats (on request)

Please note that we cannot guarantee that all items will be available at the time of your visit. Please enquire at the time of booking regarding any specific requests.

Specialist equipment

Other specialist equipment such as wheelchairs, bath seats, toilet frames etc may be available for loan or purchase from the local Red Cross loan centre. Please check this out before booking the cottage and contact us if you require further information.

<http://www.redcross.org.uk/standard.asp?id=89425>

Future Plans to improve Access to National Trust Holiday Accommodation

- We are currently in the process of writing accessibility guides for all our holiday cottages and bunkhouses and improving access over time for all our guests. All feedback is very helpful in informing us of ways in which we can improve access. We welcome any comments or ideas from you about access at this cottage and thank you for taking the time to do this. Please do this in the most convenient way for you. See contact details below or information on website.

About the Accessibility Guide

- This Accessibility Guide is intended to provide key information about the accommodation that may be particularly relevant to guests with disabilities. Please contact us prior to booking if you would like information that is more specific, and we will be happy to oblige.
Email: holiday.enquiries@nationaltrust.org.uk
Phone: 0344 8002070

Access for All at the National Trust

- The Access for All office works to improve access at all National Trust accommodation and properties. The office welcomes comments and ideas on improving access.
Phone: 01793 818531
Email: accessforall@nationaltrust.org.uk

Date March 2026