

Accessibility Guide

Threshing Barn
Smethcote
Upton Magna
Shropshire
SY4 4UE



Introduction

Built at Smethcote Farm in the 1700s, the Threshing Barn is now a comfortable countryside retreat for six people.

The hallway leads to an open-plan kitchen, dining and sitting room area with a double-height ceiling, exposed brick walls and a woodburning stove. There's one double bedroom with an ensuite shower on the ground level. The first of two staircases lead into the first-floor double bedroom with an ensuite shower. The second staircase takes you to the mid-level family bathroom and then up again to a twin bedroom.

Outside, the barn shares a large walled garden with the Smethcote Barn next door. There is a lawn as well as a wildflower meadow to support local wildlife. Two Dutch barns, built around 1900, provide some shelter and shade. Within the garden, Threshing Barn has a screened private seating area including a fire pit which has a barbecue grill.

The Cottage is arranged as follows:

Ground Floor:

The entrance door opens into a hallway. On the right side is an open plan kitchen, dining, and sitting room and on the left side is a doorway leads to a king (5ft) bedroom with ensuite. Directly in front of the entrance door is a guests cupboard.

First Floor:

Stairs from the hallway leads into a King (5ft) size bedroom with ensuite shower room. The second staircase from the hall leads to mid-level bathroom with shower over bath and then proceeds up to a twin bedroom with two 3ft single beds.

Pre-Arrival

- See the main webpage for booking and location details.
- Please contact us prior to booking if you have any specific access requirements.
- Directions provided with booking.
- Please drive slowly along the driveway.

Arrival & Parking Facilities

- Access is from a driveway off a narrow road.
- There are 3 parking spaces for Threshing Barn in the shared parking area. There are shared electric vehicle charging points.
- Access to the property from a vehicle to the entrance door can be 4000mm if park near the entrance door, via a concrete pathway.
- Around the cottage is a flat path made from a combination of compacted gravel. The seating area is on a compacted gravel area.



Getting in (and out) of the cottage

- The Key safe for Threshing Barn is on the right-hand side of the front door.
- The front door (image 1) leads to the hallway and has two steps up first being 160mm and the second being 140mm. The width of the door is 860mm and a height of 1740mm.
- There are two alternative access doors, both at the rear of the barn.
- The door in image 2 leads from the kitchen to the patio at the back of the barn and has one steps down from inside of 190mm high. The door has an opening width of 1040mm.
- The double door in image 3 leads from the sitting room to the front of the barn has a width of 1670mm wide and two steps down first is 160mm and the second is 160mm.



1



2



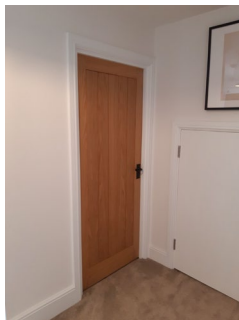
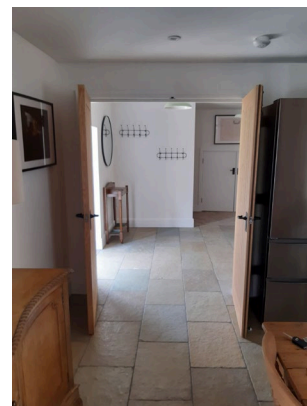
3



Getting around the cottage

Ground floor:

- From the hallway there is a door with an open width of 1470mm, this leads to an open-plan kitchen, dining room and sitting room. A stone paved floor runs throughout the hall, kitchen, dining room and sitting room of the barn.
- Through a door with a width of 690mm and down a corridor with a width of 760mm is a king (5ft) bedroom. The bed is 600mm high and there are two chairs in the room each with a seat height of 490mm. There is an ensuite for this bedroom with a door width of 720mm. There is a shower with a step up height of 190mm and a door width of 530mm. The shower tray is 1100mm x 700mm. The sink height in the ensuite is 850mm and the toilet height is 460mm.



Open plan kitchen dining sitting room

Kitchen

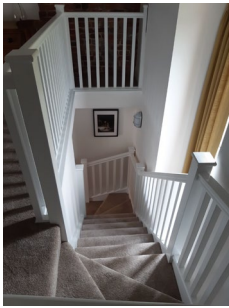
- The height of worktop is 930mm.
- There is an electric cooker, dishwasher, washing dryer, cordless kettle, toaster, microwave and fridge/freezer.
- The dining table is 760mm high
- The dining chairs are 470mm high
- There is a side board that is 980mm high
- The sofa seats are 420mm high with armrests that are 550mm



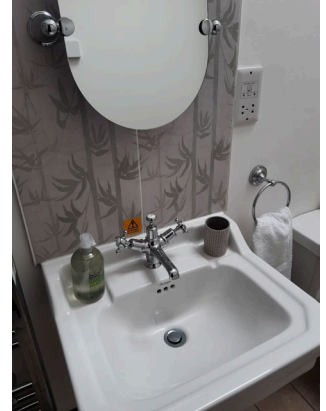
First floor:

Bedrooms - Main Bedroom

The main bedroom has a King (5ft) bed which has a height of 720mm and an ensuite. This bedroom is reached by a staircase that twists up 13 stairs. The highest stair is 200mm and the width of the staircase is 760mm at its narrowest point.

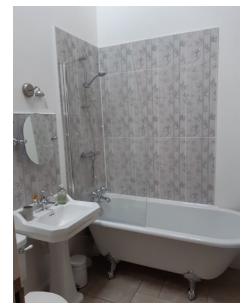


The ensuite has a walk in shower with a door width of 790mm and a step up of 150mm. The shower tray is 1600mm x 750mm. The toilet seat height is 460mm and the sink height is 850mm. The toilet has a lever flush, the sink has turn taps and the shower has a lever tap.

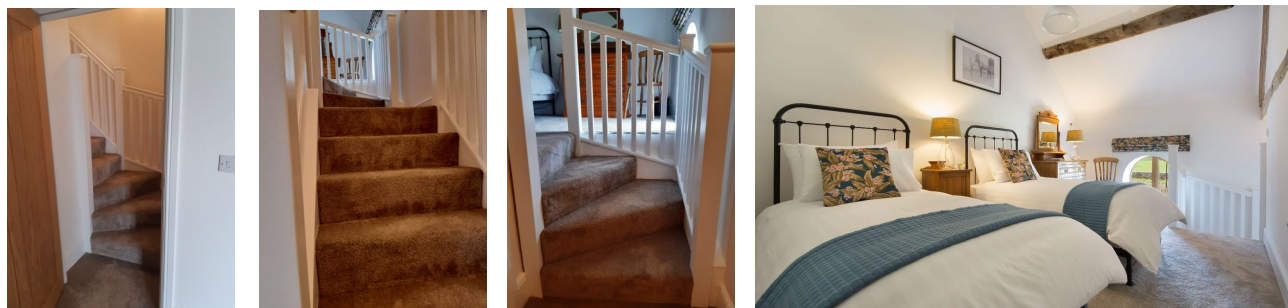


Twin Bedroom and Main Bathroom

The twin bedroom can be accessed by stairs that twist up 9 stairs to a midway landing. These carpeted stairs have a width of 760mm at narrowest point and a max stair height of 200mm. At the midway landing you will find the main bathroom. This bathroom has a door width of 710mm and a roll top shower bath that is 1500mm long, has a depth of 470mm and a height of 640mm. The sink is 850mm high and the toilet is 46mm height. The floor in the bathroom is tiled.



The twin bedroom is up a further 4 stairs with a max height of 200mm. The twin beds have a height of 550mm and there is a walkway of 650mm around the beds. The wardrobe has a low door of 1280mm high and 700mm wide.



Garden

There is a very large walled garden at the rear of the property. The garden is open with the holiday cottage next door, but there is a dividing fence part way up the garden, so that they each have their own private section. There is a private external seating area near to the barn with fire pit.

There is a gate at the side of the barn that is 1240mm wide. The garden furniture on the patio has a table with a height of 720mm and chairs with seats of 420mm high. The bench at the front of the barn has a seat height of 400mm.



Additional Information

- Assistance dogs are welcome at all our cottages
- In the event of a fire, it is the responsibility of the guests to evacuate themselves. Vibrating fire/smoke detectors are available if requested at time of booking. Please contact us if you have any other specific access requirements in this respect.

Facilities at all cottages

The National Trust aims to expand the list of accessible /equipment/items available at each cottage and these may include

- Cordless kettle
- Hollowfibre bedding
- Chair with armrests
- Good reading light
- Large handle vegetable peeler
- Easy tin opener
- Non-slip mat for bath/shower
- Non-slip place mat
- Easy jar opener
- Information in alternative formats (on request)

Please note that we cannot guarantee that all items will be available at the time of your visit. Please enquire at the time of booking regarding any particular requests.

Specialist equipment

Other specialist equipment such as wheelchairs, bath seats, toilet frames etc may be available for loan or purchase from the local Red Cross loan centre. Please check this out before booking the Cottage and contact us if you require further information.

<http://www.redcross.org.uk/standard.asp?id=89425>

Future Plans to improve Access to NT Holiday Cottages

- We are currently in the process of writing accessibility guides for all our holiday cottages and improving access over time for all our guests. All feedback is very helpful in informing us of ways in which we can improve access to all our cottages. We welcome any comments or ideas from you about access at this cottage and thank you for taking the time to do this. Please do this in the most convenient way for you. See contact details below or information on website.

About the Accessibility Guide

- This Accessibility Guide is intended to provide key information about the cottage that may be particularly relevant to guests with disabilities. Please contact us prior to booking if you would like information that is more specific, and we will be happy to oblige.

Email: cottages@nationaltrust.org.uk

Phone: 0844 8002070

Access for All at the National Trust

- The Access for All office works to improve access at all National Trust cottages and properties. The office welcomes comments and ideas on improving access.

Phone: 01793 818531

Email: accessforall@nationaltrust.org.uk

Date: October 2022