

## National Trust Cottages Accessibility Guide Template

Engine House  
Trelissick Estate,  
Feock,  
Truro,  
Cornwall  
TR3 6QL

Ref: 011088



### Introduction

- Engine House is a single storey stone building, sharing a private, enclosed garden with the Water Tower.
- The cottage has an open fire and Rointe electric heaters.
- Engine House has ground floor facilities which may be suitable for guests with access needs.

### Pre-Arrival

- See the main webpage for booking and location details
- Please contact us prior to booking if you have any specific access requirements.
- Directions are provided with booking
- Bring a torch if you plan to arrive in the dark as there are no streetlights onsite and a torch is useful to see the keysafe combination lock numbers.

### Approach

- Engine House is approached through the main entrance to the Trelissick Estate, to the bottom of the car park where you will see gates on the left marked 'Private'

## Arrival & Parking Facilities



- Entry is through the gates marked private in the lower car park
- Level shingled driveway with parking for 1 car outside the garage (not used for parking)
- The key safe is to the left of the front door. It is operated by a combination lock mechanism.
- The keys will need to be returned to the key safe on departure.

## Getting in (and out) of the cottage

There are 2 entrances which open into the hallway. The main door is 74cm wide with a lip of 90mm. The secondary access door is 74cm wide with a lip of 90mm. Both entrance doors have storm shelter overhead.



## Getting around the cottage

The main corridor with doors for access to other rooms is 88cm wide.



## Ground Floor

- Level access throughout the property
- There is luxury vinyl flooring in the corridor, living room, kitchen and W.C.
- Wet room has tiled floor
- Carpets are fitted in the bedrooms
- There are 2 multi-sensor alarms fitted in the corridor. For a pillow alarm, please contact the customer care team before your holiday.

## W.C.

- Door width is 55cm
- The WC is 40cm high
- There is one window looking out to parking area with roman blind
- Basin is 86cm high
- There is a mirror with a light and shaver point
- Heated towel rail
- Ceiling light
- Extractor fan
- Wall mounted shelves



## Double Bedroom



- Door width 710cm
- King size double bed frame 150cm wide x 200cm long
- 2 bedside cabinets with doors
- 2 bedside lamps
- 1 ceiling light
- Built in wardrobe, rail 146cm high
- Chest of 3 drawers
- Multi-sensor alarm
- Rointe wall mounted heater
- 1 window overlooking rear garden
- Wall mounted mirror

## Single Bedroom



- Door width 70cm

# National Trust

- Single bed frame 100cm wide x 200cm long
- 1 ceiling light
- 1 bedside light
- 1 window overlooking rear garden
- 1 bedside table with doors
- 1 chest of drawers with 2 wide drawers and 2 small drawers
- 1 chair seat height 45cm
- Built in wardrobe, rail 150cm high
- Wall mounted Rointe heater
- Wall mounted mirror
- Multi-sensor alarm

## Wet room



- Door width 70cm
- 5 spotlights
- Bath – 51cm high x 44cm wide x 169cm long, 1 wall mounted grab rail
- Wall hung basin
- Mirror with light and shaver point
- W.C. is 39cm high
- Heated ladder towel rail
- Window overlooking rear garden

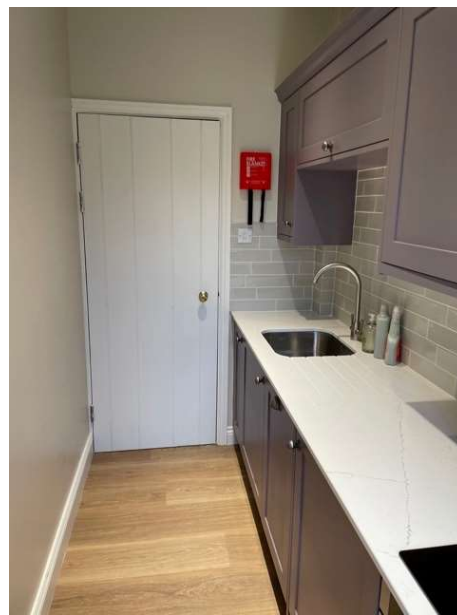
# National Trust

- Shower area – open fronted with 2 wall mounted grab rails.
- Separate shower stool
- Extractor fan
- There is a 3cm lip on the door where the textured flooring tiles in the bathroom have made a small step from the corridor flooring.



## Kitchen

- Door width 70cm
- Room width 85cm, length 304cm
- 1 window overlooking rear garden
- 4 spotlights
- Neff electric cooker with ceramic hob
- Extractor fan
- Worktop height 90cm
- Microwave, toaster and cordless kettle
- Undercounter fridge
- Ceiling mounted heat detector



# National Trust

## Sitting Room / Dining Room



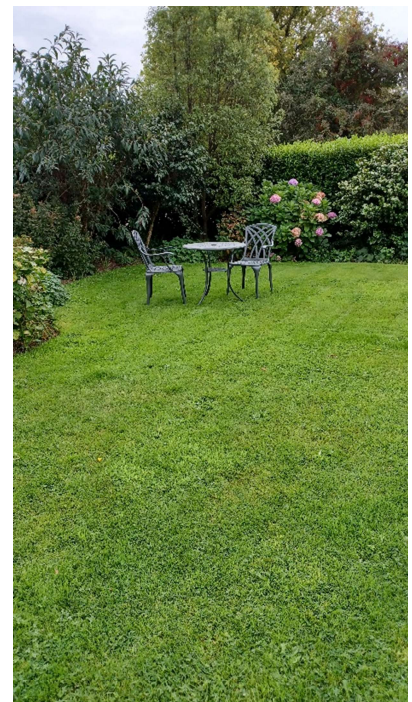
- Door width 78cm
- 3 windows – 1 overlooking rear garden, 2 overlooking main garden.
- Large sofa, W178cm x D98cm x H88cm
- 1 Armchair, W76cm x D88cm x H93cm
- 1 drop leaf coffee table
- Rug
- Circular solid wood dining table, diameter 104cm, knee clearance 72cm high
- 4 rattan dining chairs, seat height 48cm
- TV stand with television and DVD player
- Radio and CD player
- Ceiling light
- Wall mounted shelves
- 1 standard lamp
- 2 wall mounted Rointe heaters
- Carbon monoxide monitor
- Multi-sensor alarm

## Garage



- Double doors opening width 200cm
- Freezer
- Washing machine
- Tumble drier
- 1 window overlooking rear garden
- 2 strip lights on light sensitive sensors
- Multi-sensor alarm
- Cupboard for wood storage

## Garden



At the front of the cottage is a round garden table 800mm wide x 730mm high and four chairs with arms (seat height 450mm). There is also an area of lawn which is shared with guests of the Water Tower. On this lawn is a round garden table and two chairs. The Engine House also benefits from exclusive use of the garden behind the cottage, where the waste store is located and there is a rotary washing line.





## Additional Information

- Assistance dogs are welcome at all of our cottages
- In the event of a fire, it is the responsibility of the guests to evacuate themselves. Vibrating fire / smoke detectors are available if requested at time of booking. Please contact us if you have any other specific access requirements in this respect.

## Facilities at all cottages

The National Trust aims to expand the list of accessible /equipment/items available at each cottage and these may include

- Cordless kettle
- Hollowfibre bedding
- Chair with armrests
- Good reading light
- Large handle vegetable peeler
- Easy tin opener
- Non-slip mat for bath/shower
- Non-slip place mat
- Easy jar opener
- Information in alternative formats (on request)

Please note that we cannot guarantee that all items will be available at the time of your visit. Please enquire at the time of booking regarding any particular requests.

## Specialist equipment

Other specialist equipment such as wheelchairs, bath seats, toilet frames etc may be available for loan or purchase from the local Red Cross loan centre. Please check this out before booking the Cottage and contact us if you require further information.

<https://www.redcross.org.uk/get-help/borrow-a-wheelchair>

<https://www.redcross.org.uk/get-help/hire-a-toilet-aid>

## Future Plans to improve Access to National Trust Holiday Accommodation

- We are currently in the process of writing accessibility guides for all our holiday cottages and bunkhouses and improving access over time for all our guests. All feedback is very helpful in informing us of ways in which we can improve access. We welcome any comments or ideas from you about access at this cottage and thank you for taking the time to do this. Please do this in the most convenient way for you. See contact details below or information on website.

## About the Accessibility Guide

- This Accessibility Guide is intended to provide key information about the accommodation that may be particularly relevant to guests with disabilities. Please contact us prior to booking if you would like information that is more specific and we will be happy to oblige.

Email: [holiday.enquiries@nationaltrust.org.uk](mailto:holiday.enquiries@nationaltrust.org.uk)

Phone: 0344 8002070



## **Access for All at the National Trust**

- The Access for All office works to improve access at all National Trust accommodation and properties. The office welcomes comments and ideas on improving access.

Phone: 01793 818531

Email: [accessforall@nationaltrust.org.uk](mailto:accessforall@nationaltrust.org.uk)

August 2023