

# National Trust

## National Trust Accessibility Guide



### **The Water Tower**

Trelissick  
Feock  
Truro  
Cornwall  
TR3 6QL

Ref: 011075

### **Introduction**

- Water Tower is a 4 storey stone tower in the heart of the Trelissick Estate
- The Tower has Rointe environmental radiators

The accommodation comprises of the following:  
Kitchen/Dining Room, Double Bedroom, Lounge, Exterior bathroom.  
Enclosed garden shared with Engine House.

### **Pre-Arrival**

- See the main webpage for booking and location details
- Please contact us prior to booking if you have any specific access requirements
- Directions are provided with booking
- Bring torch if arriving after dark as there are no streetlights here

## Approach

The Tower is approached via the main visitor entrance to Trelissick Estate. Guests can drive towards the bottom car park and then turn left and there is a parking space for one car outside the gate of the Water Tower.

## Arrival & Parking Facilities



- Gate with step up 100mm to private gravel forecourt – leading to shared garden with Engine House.
- Slightly raised slate step 30mm at entrance porch with roof over and light
- The key safe is to the left of the front door. It is operated by a combination lock mechanism
- A torch is recommended, especially if arriving in the dark, the keys will need to be returned to the key safe on departure



- Step up at front door of 120mm
- The door has a clear opening width of 600mm with a gap of 700mm to first step 220mm high
- There are a total of 50 steps to the top floor.
- Behind the front door is a cupboard housing the fire alarm panel which is not to be used as storage and is fitted with a lock. In the event of false fire alarms, the key to this cupboard can be found hanging in the bathroom lobby cupboard.

### Getting around the cottage

- 50 wooden spiral steps
- Vinyl flooring in the kitchen/dining area and bathroom
- Carpet in the bedroom and sitting room

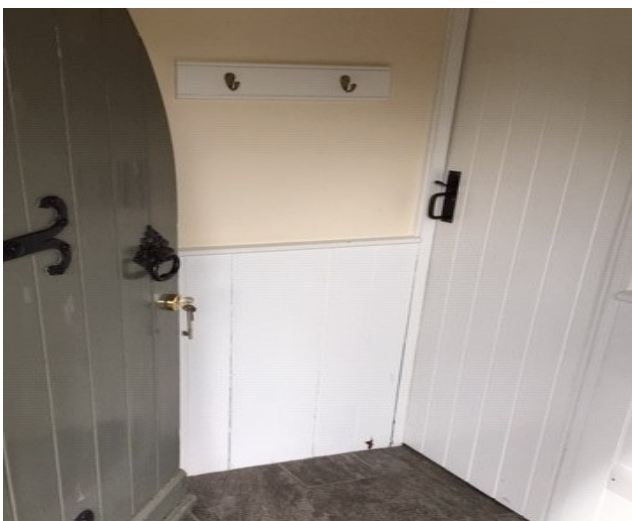


Guests should be advised that the staircase at this property is circular and relatively narrow (see photos provided). A rope hand rail has been installed to help guests navigate the staircase.



## External Bathroom

The bathroom is accessed via the external door to the left of the main entrance to the tower. The key for this area is on the set of cottage keys which can be found in the key safe.



Door entrance is 840mm down to:-

# National Trust

- Step down 150mm to entrance area of bathroom
- Door width is 590mm
- Jacuzzi Bath is 1650mm long x 680mm wide x 510mm high there are mixer taps with a shower attachment.
- Basin is 840mm high
- W.C. is 430mm high
- Mirror with light and shaver point
- Heated towel rail
- 4 Spotlights
- 2 Large frosted glass windows



## Main accommodation

The rest of the accommodation is accessed via the main entrance door. From the entrance, 8 steps curve around with rope to hold on to towards:

## Bedroom



- Door opens inward to two brick steps of 230mm each
- Door width is 610mm
- Circular room with 2 windows
- Rointe electric radiator
- Canopied bed
- 2 central ceiling lights and 2 bedside table lamps
- 2 storage drawers under one window



- 450mm long rail with hangers
- 2 bedside tables

10 Steps up the staircase to:

## Sitting Room



- Door opens outwards onto staircase
- Door width is 700mm
- 4 steps up into the lounge 230mm each
- Circular room with dual aspect windows
- Two seater sofa height 500mm
- TV and DVD player
- Rointe electric radiator
- Standard lamp x 2
- Side table 680mm high x 510mm long x 370mm wide



31 Steps up the staircase to:

## Kitchen/Dining Room



- Door opens inwards
- 2 steps down into kitchen – step height 200mm
- Door width is 600mm
- Height of worktops is 920mm from floor level
- Electric cooker with ceramic hob
- Fridge and freezer (Beko)
- Microwave, cordless kettle, toaster, radio/cd player
- Rointe electric radiator
- Wooden oval table and curved wooden bench seat
- Table has knee clearance of 640mm
- Bench seat height is 530mm

# National Trust

- Small wooden chair seat height 430mm
- 5 spotlights and 1 central light
- Built-in storage cupboard
- 3 windows
- 2 Electronic Fly Lights



## Garden

- 2 steps up to lawn (80mm and 200mm)
- Shared enclosed garden
- Garden table (730mm high) and two chairs with arms (seat height 450mm).



## Additional Information

- Assistance dogs are welcome at all our cottages
- In the event of a fire, it is the responsibility of the guests to evacuate themselves. Vibrating fire/smoke detectors are available if requested at the time of booking. Please contact us if you have any other specific access requirements in the respect.



### **Facilities at all cottages**

The National Trust aims to expand the list of accessible /equipment/items available at each cottage and these may include

- Cordless kettle
- Hollowfibre bedding
- Chair with armrests
- Good reading light
- Large handle vegetable peeler
- Easy tin opener
- Non-slip mat for bath/shower
- Non-slip place mat
- Easy jar opener
- Information in alternative formats (on request)

Please note that we cannot guarantee that all items will be available at the time of your visit. Please enquire at the time of booking regarding any particular requests.

### **Specialist equipment**

Other specialist equipment such as wheelchairs, bath seats, toilet frames etc may be available for loan or purchase from the local Red Cross loan centre. Please check this out before booking the cottage and contact us if you require further information.

<http://www.redcross.org.uk/standard.asp?id=89425>

### **Future Plans to improve Access to National Trust Holiday Accommodation**

- We are currently in the process of writing accessibility guides for all our holiday cottages and bunkhouses and improving access over time for all our guests. All feedback is very helpful in informing us of ways in which we can improve access. We welcome any comments or ideas from you about access at this cottage and thank you for taking the time to do this. Please do this in the most convenient way for you. See contact details below or information on website.

### **About the Accessibility Guide**

- This Accessibility Guide is intended to provide key information about the accommodation that may be particularly relevant to guests with disabilities. Please contact us prior to booking if you would like information that is more specific and we will be happy to oblige.  
Email: [cottages@nationaltrust.org.uk](mailto:cottages@nationaltrust.org.uk)  
Phone: 0344 8002070

### **Access for All at the National Trust**

- The Access for All office works to improve access at all National Trust accommodation and properties. The office welcomes comments and ideas on improving access.  
Phone: 01793 818531  
Email: [accessforall@nationaltrust.org.uk](mailto:accessforall@nationaltrust.org.uk)

August 2023