

National Trust Cottages Accessibility Guide

The Farm House, Triggabrowne
Triggabrowne
Lanteglos by Fowey
PL23 1NP



Ref: 011017

Introduction

- The Farm House, Triggabrowne is part of a substantial farmhouse that has been converted into holiday cottages.
- It has views over the countryside.
- The cottage has night storage heating, convector heaters and a multi fuel stove.
- There are laundry facilities in a communal outbuilding.
- The land immediately around the cottage is reasonably flat.

The Cottage is arranged as follows:

There is a hall, sitting room and kitchen/diner on the ground floor. On the first floor there are two bedrooms and bathroom.

Pre-Arrival

- See the main webpage for booking and location details.
- Please contact us prior to booking if you have any specific access requirements.
- Directions provided with booking.
- Please bring a torch.

Approach

- The cottage is approached via country lanes signposted Polruan.

Arrival & Parking Facilities

- Parking is in the communal unlit farmyard car parking area.
- There is parking for two cars.
- The distance from the car park to the cottage is approximately 25 to 30m.
- There is an unloading space outside the cottage.
- The car park is sloping and its surface consists of uneven rough gravel.
- There is a 50 cm wide gravel path to front door across the garden with two stone steps 130mm high
- The key safe is on the right hand side of the door at a height of 760mm ffl (from floor level). It is operated by a combination lock mechanism.
- There is a light in the porch.



Getting in (and out) of the cottage

- The main door has a clear opening width of 760mm.
- The entrance door leads directly into the porch and then a further door leads into the hall.
- There is a 180mm step into the porch followed by a 50mm wooden threshold into the hall.
- There are no other doors leading outside.



Getting around the cottage

- The porch and hall have a slightly uneven slate floor.
- There is a hard floor covering in the kitchen/diner and bathroom.
- There is carpet in the bedrooms, stairs and landing.
- Internal doors clear opening widths range from 600-890mm.
- There are 11 stairs with a handrail leading to the first floor. There is a landing with doorway to bathroom and then a further two stairs to the bedrooms. There isn't a handrail for these two stairs.

Hall

- There is a table and a chair with a seat height of 400mm.



Sitting Room

- Directly off the hall.
- There is a sofa with a seat height of 450mm with cushions, one armchair with a seat height of 440mm and a firm armchair at 450mm high.
- There is a multifuel stove.
- There is a TV and DVD player.
- There is a CD player.
- There are 2 table lamps and one ceiling light.
- There is a window overlooking the garden.



Kitchen/Diner

- Directly off the hall.
- The height of worktop is 930-980mm.
- There is an electric oven with controls to the front and a ceramic hob with controls to the side.
- There is a dishwasher, fridge freezer, microwave, cordless kettle and toaster.
- There is a washing machine and tumble dryer in the communal laundry room.
- There are 5 ceiling spotlights.
- There is a dining table and four chairs
- The table has knee clearance of 620mm. The dining chairs are 450mm high.
- The ceiling is 1950mm ffl.



First Floor

Double Bedroom

- Door from landing.
- There are two steps into the bedroom which are 90mm high.
- There is a centralised Zip & Link double bed 1900mm wide x 1960mm long x 7250mm high which can be twins on request.
- The clearance underneath the bed is 40mm.
- There are two bedside tables 740mm high with table lamps.
- There is also a central ceiling light.
- There is a built in wardrobe with a clothes rail at 1520mm ffl.
- There is a wooden arm chair at height of 470mm.
- There is a chest of drawers at a height of 950mm.
- Views over garden, orchard and countryside.

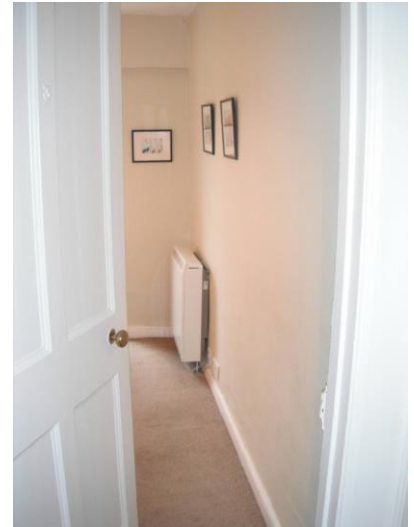


Step into Double Bedroom



Twin Bedroom

- There is a twin bedroom off the landing.
- Door clearance is 580mm
- The beds are 900mm wide x 1900mm long x 660mm high.
- The clearance underneath the bed is 40mm.
- The beds are separated with a chest of drawers which is 820mm high with two table lamps.
- The gap between the beds is 870mm.
- There is also a central ceiling light.
- Views over garden, orchard and countryside.



Landing

- On the landing is a wardrobe with a hanging rail at 1570mm ffl



Bathroom

- The bathroom is off the landing.
- There is a 100mm step into the bathroom.
- The bath is standard size and has hand grips on it.
- There is an electric shower over the bath.
- The WC is 410mm high.
- The basin is 820mm high.
- There is a chair with a seat height of 440mm.
- Central ceiling light fitting and shaver light.
- Heated towel rail.
- Window overlooking gardens



Garden

- Enclosed slightly sloping garden with two gates. The garden is overlooked by 2 windows from Tippet's cottage.
- Fixed table and chairs.
- The garden is grass & shrubs.
- There is a purpose built stone BBQ.



Laundry Room

- There are two washing machines and two tumble dryers in an outbuilding adjoining the Round House next to Fortescue cottage.
- This is approximately 30m from the car park on an uneven sloping grass and gravel path.
- There is a 150mm step into the laundry room and a 60mm threshold. There is a concrete floor.





Additional Information

- Assistance dogs are welcome at all our cottages
- In the event of a fire, it is the responsibility of the guests to evacuate themselves. Vibrating fire/smoke detectors are available if requested at time of booking. Please contact us if you have any other specific access requirements in this respect.

Facilities at all cottages

The National Trust aims to expand the list of accessible /equipment/items available at each cottage and these may include

- Cordless kettle
- Hollowfibre bedding
- Chair with armrests
- Good reading light
- Large handle vegetable peeler
- Easy tin opener
- Non-slip mat for bath/shower
- Non-slip place mat
- Easy jar opener
- Information in alternative formats (on request)

Please note that we cannot guarantee that all items will be available at the time of your visit. Please enquire at the time of booking regarding any particular requests.

Specialist equipment

Other specialist equipment such as wheelchairs, bath seats, toilet frames etc may be available for loan or purchase from the local Red Cross loan centre. Please check this out before booking the Cottage and contact us if you require further information.

Future Plans to improve Access to NT Holiday Cottages

- We are currently in the process of writing Accessibility Guides for all our holiday cottages and improving access over time for all our guests. All feedback is very helpful in informing us of ways in which we can improve access to all our cottages. We welcome any comments or ideas from you about access at this cottage and thank you for taking the time to do this. Please do this in the most convenient way for you. See contact details below or information on website.

About the Accessibility Guide

- This Accessibility Guide is intended to provide key information about the cottage that may be particularly relevant to guests with disabilities. Please contact us prior to booking if you would like information that is more specific and we will be happy to oblige.
Email: holiday.enquiries@nationaltrust.org.uk

Phone: 0344 8002070

Access for All at the National Trust

- The Access for All office works to improve access at all National Trust cottages and properties. The office welcomes comments and ideas on improving access.
Phone: 01793 818531
Email: accessforall@nationaltrust.org.uk

Date: October 2022