



# National Trust

## National Trust Cottages Accessibility Guide

**Tywyn Cottage  
Cemaes Bay  
Anglesey  
North Wales  
LL67 0ND  
Ref: 008011**



### Introduction

- Attractive cottage situated in the picturesque harbour village of Cemaes Bay on the North Coast of Anglesey.
- The cottage can accommodate four people plus a cot.
- Central heating throughout.
- Open fire in sitting room.
- Small, enclosed garden to the front with rear garden commanding splendid uninterrupted views over the harbour and bay.
- Parking available for three cars.

### The Cottage is arranged as follows:

#### Ground Floor

- Entrance porch, lobby area, single bedroom, kitchen with dining area down short flight of steps.
- Down two further steps from kitchen to sitting room and a further two steps into master bedroom (double).

#### First Floor

- One single bedroom, bathroom with shower over bath.

### Pre-Arrival

- See the main webpage for booking and location details.
- Please contact us prior to booking if you have any specific access requirements.
- Directions provided with booking.
- Bring torch if arriving in the dark as there are no streetlights here.

## Approach

- Tywyn is on the main road into the village of Cemaes Bay. It is situated on a working farm.
- Guests need to follow the instructions sent with the booking information with care.



## Arrival & Parking Facilities

- There is a parking area through the farm gate in front of the cottage.
- There is also a charge point for electric cars.
- There are 4 steps down to the garden and a narrow path to the front door from here.
- The key safe is in a black box outside the front door to the right (as facing). It is operated by a push button mechanism. A torch is recommended especially if arriving in the dark as the numbers on the box can be difficult to see. The key is returned to the key safe on departure.

## Getting in (and out) of the cottage

- There are two steps in the front garden approach to the cottage which are 8cm and 10cm.
- The front doorstep is 12cm.
- The front door has a clear opening width of 94cm. There is a further step up into the porch measuring 11cm.
- There is a further door from the porch which opens into the lobby area and which has a clear opening width of 97cm.
- The back door has a clear opening width of 81cm.
- There is also outdoor access from the master bedroom through a door with a width of 84cm.



Front door and inner porch

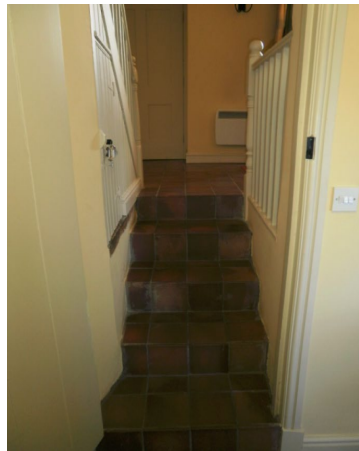
## Getting around the cottage:

### Ground floor

- Step up from porch into lobby area. Level access into one single bedroom.
- There are four steps leading down into the kitchen each measuring 19cm.
- There are two steps leading down from the kitchen into the lounge measuring 13cm and 15cm.
- There are two steps leading down into the master bedroom measuring 15cm each.
- Internal door widths on the ground floor are as follows;  
Single bedroom – 74cm  
Kitchen – 75cm  
Lounge – 72cm  
Master Bedroom – 84cm
- The flooring comprises quarry tiles in entrance porch, lobby area and kitchen. The lounge, master bedroom and ground floor single bedroom are carpeted. The steps into the kitchen are tiled.
- The staircase to the first floor is 77cm wide with the height of each of the six risers being 20cm.
- Bannister rail to the left hand side is 72cm.



Staircase to Bathroom



Staircase down to Kitchen

## First floor

- The width of both internal doors on the first floor is 70cm.
- The width of the landing is 77cm.
- There are painted wooden floorboards throughout the first floor and the steps are carpeted.

## Dining Area

- Four chairs each with a seat height of 41cm.
- Round, wooden table clearance height 72cm.

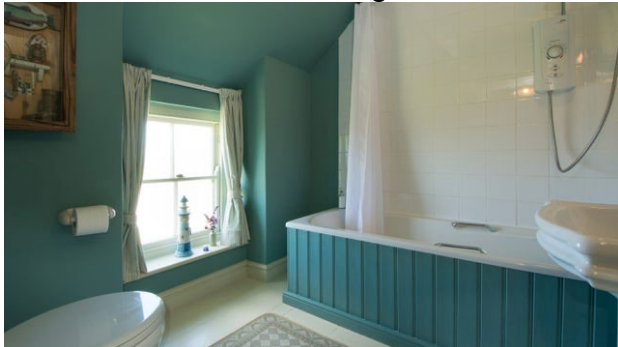
## Single Bedroom

- On ground floor.
- The bed is 65cm high x 90cm wide x 188cm long.
- Antique brass/iron bed.
- Main light.
- Bedside table with lamp.
- Small rug with non-slip backing to right of bed.



## First floor Bathroom

- WC, basin and bath.
- The WC is 43cm high.
- The basin is 80cm high.
- Acrylic bath is 52cm high x 170cm x 68cm wide.
- 107cm between edge of toilet and bath.



(Bathroom is painted Cream)

## Single Bedroom

- On first floor.
- The bed is 69cm high x 90cm wide and 188cm long.
- Antique brass/iron bed.
- Single chair with a seat height of 48cm.
- Bedside table with lamp.
- Small rug with non-slip backing.



## Kitchen

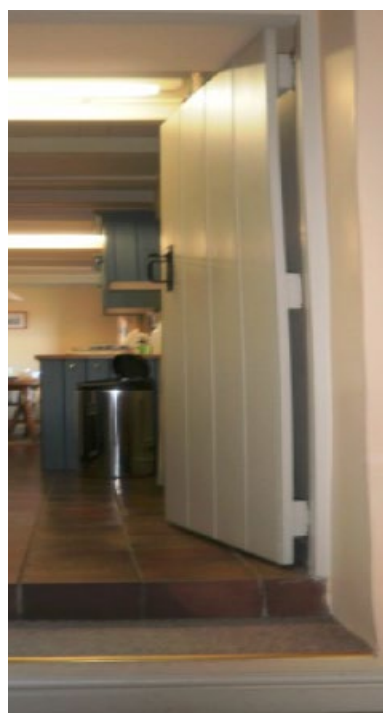
- Height of worktop is 90cm.
- Electric cooker with ceramic top and fridge freezer.
- Fluorescent lighting.
- Electric toaster and kettle.
- Drop leaf dining table with a height of 74.5cm and chairs with a seat height of 45cm.
- Rocking chair with seat height of 47cm.



## Sitting Room

- One three seat sofa with seat height of 44cm.
- One chairs with seat height of 44cm.
- Grey rectangle pouffe.
- Open fire.
- Standard lamp, table lamp and main light.

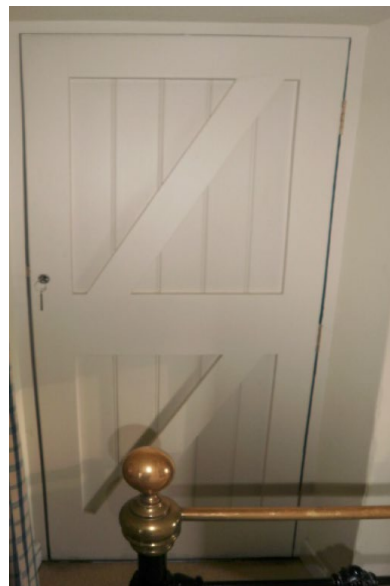
**Sitting room showing steps to kitchen**





## Master Bedroom

- On first floor.
- The bed is 70cm high x 152.5cm wide x 188cm long.
- Antique iron/brass bed.
- Bedside tables with lamp on each side.
- Wooden chair with seat height 46cm.
- Wardrobe.



## Garden

- Enclosed small garden to the front of the property with patio.
- Rear garden with garden furniture.

## Additional Information

- Assistance dogs are welcome at all our cottages.
- Pets other than assistance dogs cannot be accommodated here.
- In the event of a fire, it is the responsibility of the guests to evacuate the building. Vibrating fire/smoke detectors are available if requested at time of booking. Please contact us if you have any other specific access requirements in this respect.

## Facilities at all cottages

The National Trust aims to expand the list of accessible /equipment/items available at each cottage and these may include:

- Cordless kettle
- Hollowfibre bedding
- Chair with armrests
- Good reading light
- Large handle vegetable peeler
- Easy tin opener

- Non-slip mat for bath/shower
- Non-slip place mat
- Easy jar opener
- Information in alternative formats (on request)

Please note that we cannot guarantee that all items will be available at the time of your visit. Please enquire at the time of booking regarding any specific requests.

## Specialist equipment

Other specialist equipment such as wheelchairs, bath seats, toilet frames etc may be available for loan or purchase from the local Red Cross loan centre. Please check this out before booking the Cottage and contact us if you require further information.

<https://www.redcross.org.uk/get-help/borrow-a-wheelchair>

<https://www.redcross.org.uk/get-help/hire-a-toilet-aid>

## Future Plans to improve Access to National Trust Holiday Accommodation

- We are currently in the process of writing accessibility guides for all our holiday cottages and bunkhouses and improving access over time for all our guests. All feedback is very helpful in informing us of ways in which we can improve access. We welcome any comments or ideas from you about access at this cottage and thank you for taking the time to do this. Please do this in the most convenient way for you. See contact details below or information on website.

## About the Accessibility Guide

- This Accessibility Guide is intended to provide key information about the accommodation that may be particularly relevant to guests with disabilities. Please contact us prior to booking if you would like information that is more specific, and we will be happy to oblige.

Email: [cottages@nationaltrust.org.uk](mailto:cottages@nationaltrust.org.uk)

Phone: 0344 8002070

## Access for All at the National Trust

- The Access for All office works to improve access at all National Trust accommodation and properties. The office welcomes comments and ideas on improving access.

Phone: 01793 818531

Email: [accessforall@nationaltrust.org.uk](mailto:accessforall@nationaltrust.org.uk)

Date May 2023