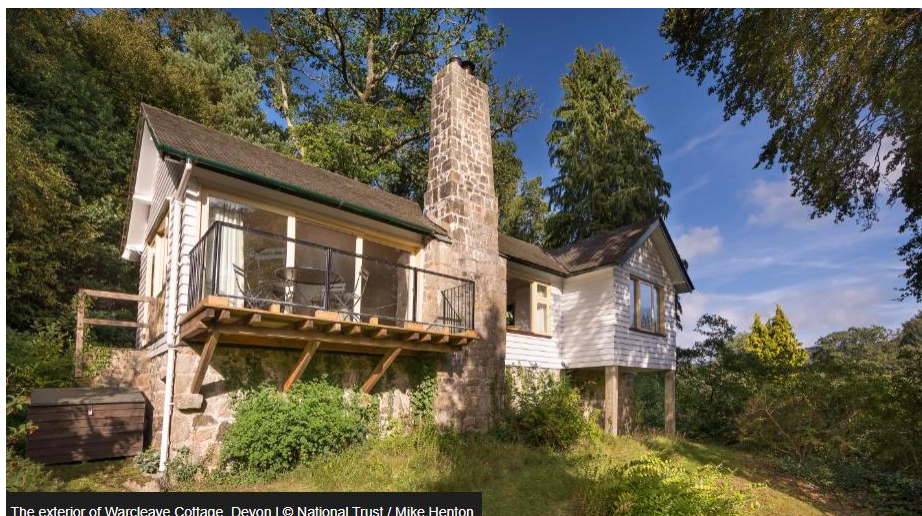


National Trust Cottages Accessibility Guide

Warcleave Cottage

Chagford,
Newton Abbot,
TQ13 8JZ

Ref: 012028



The exterior of Warcleave Cottage, Devon | © National Trust / Mike Henton

Introduction

- The property is an elevated raised bungalow, accessed by a woodland pathway and a series of uneven steep steps.
- The rooms are all on one floor, with level thresholds, good circulation and plenty of natural light throughout.
- The property is remotely located and isolated, with a semi-wild, unenclosed garden and bounded by a river.
- The cottage provides accommodation for up to 4 people in 2 bedrooms.
- The property is heated by night storage heaters and there is a wood burner in the living room.

The Cottage is arranged as follows:

Ground floor (accessed via external staircase)

Sitting/dining room with multi-fuel stove, balcony with sliding patio doors, kitchen, two bedrooms (1 kingsize, 1 standard double), bathroom with shower over bath.

Pre-Arrival

- See the main webpage for booking and location details.
- Please contact us prior to booking if you have any specific access requirements.
- Directions provided with booking
- Please bring a torch if arriving in the dark as there are no street lights at the cottage and a torch is useful to see the keysafe combination lock numbers.

Arrival & Parking Facilities

- The approach to the cottage is a single-lane track through fields.



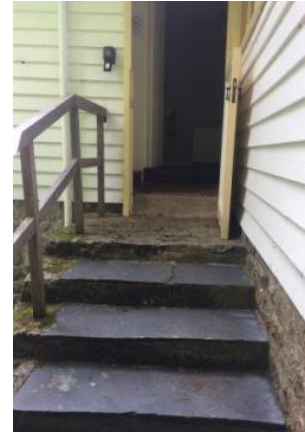
- Parking is within the grounds of the cottage and below the property on a permeable uneven concrete base.



- There is an initial long path up ascending towards the property with a series of steps at 5 metre intervals. Path width 750mm, step height 100mm, gravel with wood step.

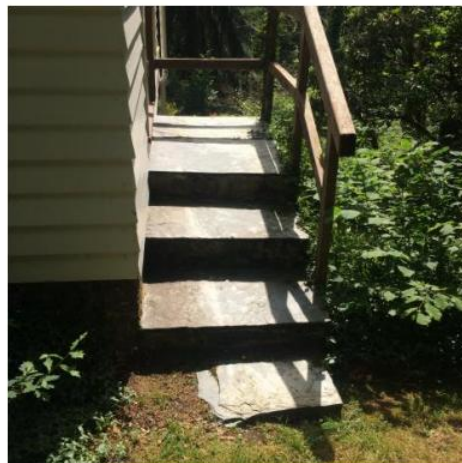


- There are 3 granite stone steps followed by a series of 10 steep, uneven stone steps and angular winders of concrete, brick and granite, maximum step height 260mm. **Prospective guests should take note that there is no handrail serving a section of these steps (photographed above).**
- The final series of 5 steps to the front door are slate, with a handrail to the left. Step height 190mm, tread 370mm, width 1170mm. The last step is concrete paving, height of 120mm.
- There is outside bollard lighting along the path and steps and there is lighting by the front door. If arriving after dark, it is advisable to bring a torch.



Getting in (and out) of the cottage

- Stable front door, width 790mm, bottom stable door opens outwards.
- Step up of 210mm
- Stable door opens into porch (width 840mm, length 890mm) seat to the side, seat height 560mm
- Press combination key box to the left of the front door, height 1440mm
- Inner door width 790mm, step up of 170mm into main hall
- There is a fire exit from the living area of the property, door width 820mm and out onto steps, steps height 190mm, tread 510mm, width 860mm with rail leading onto a steep grassy bank



Getting around the cottage

Ground floor

Entrance Hallway

- Hall is 1300mm by 1900mm narrowing to 870mm before the sitting room
- Coat hooks, height 1600mm
- Linoleum floor covering

Open plan Sitting / Dining Room

- Door width 750mm, level threshold
- Level wooden floor
- Rug floor coverings with anti-slip underlay
- Wood burner
- 2 x 2 seater settees, seat heights 480mm
- 1 x armchair, seat height 460mm
- Window with views over the woodland valley
- Sliding patio doors opening onto a balcony area with views over gardens/woodland valley
- 2 x ceiling pendant lights, 1 x floor lamp
- Dining table, height 760mm, clearance underneath 630mm
- 6 x wooden dining chairs, seat height 470mm
- Spacious with good circulation



Kitchen

- Door width 730mm threshold
- Linoleum floor
- Galley kitchen with space between units, 1000mm
- Height of worktop 930mm
- Fitted kitchen, electric double oven, ceramic hob, under-counter freezer, free-standing refrigerator, washer/drier, slim dishwasher, microwave
- Sink with mixer tap with washers
- Ceiling track lighting with 6 spotlights and high back window
- Main window with views over entrance path and down onto side woodland gardens



Bathroom – single/double/triple aspect

- Door width 550mm, level threshold
- Linoleum floor
- Fitted toilet, height 420mm with push flush in the wall to the left
- Bath height 550mm with washer twist taps, grab handles
- Shower controls, height 1550mm, shower curtain
- Sink height 850mm with washer twist taps
- Shaver socket, height 1800mm
- Ceiling light, window with views down over the parking area and woodland gardens
- Circulation width between bath and toilet 1370mm



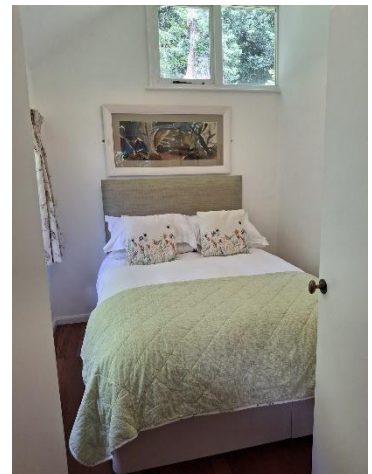
Front bedroom

- Door from main entrance hall (width, 730mm level threshold)
- Level wooden floor
- Kingsize bed, width 1500mm, length 2000mm, height 630mm (can be split into two small singles on request)
- 2 x side tables, bedside lamps with under lampshade on/off switches
- Ceiling pendant light
- 2 x windows with views down onto the garden and woodland valley
- Chair with a seat height 460mm
- Fitted wardrobe and dressing table, stool with a seat height of 440mm



Back bedroom

- Accessed via the double doors from the living / dining room (door width 1340mm with level threshold)
- Continuation of living area wooden floor, rug with anti-slip underlay
- Standard double bed, width 135cm. Storage for luggage under bed.
- Chest of drawers, bedside lamp with under lampshade on/off switches
- High window and window with views over side semi wild garden
- Good circulation, width from bed to window 1100mm



Garden

- **Prospective guests should be advised that there is direct, open access to the fast-flowing river. Children should be supervised at all times in this area.**
- Access to the garden is via the front door
- Access is also available via the door in the living room
- The unenclosed garden is semi wild with woodland, woodland glades, and areas of lawn
- Wooden garden table/benches on lawns, outdoor chairs on balcony, table/chairs by house



Additional Information

Facilities at all cottages

The National Trust aims to expand the list of accessible /equipment/items available at each cottage and these may include

- Cordless kettle
- Hollowfibre bedding
- Chair with armrests
- Good reading light
- Large handle vegetable peeler
- Easy tin opener
- Non-slip mat for bath/shower
- Non-slip place mat
- Easy jar opener
- Information in alternative formats (on request)

Please note that we cannot guarantee that all items will be available at the time of your visit. Please enquire at the time of booking regarding any particular requests.

Specialist equipment

Other specialist equipment such as wheelchairs, bath seats, toilet frames etc may be available for loan or purchase from the local Red Cross loan centre. Please check this out before booking the Cottage and contact us if you require further information.



National Trust

<https://www.redcross.org.uk/get-help/borrow-a-wheelchair>

<https://www.redcross.org.uk/get-help/hire-a-toilet-aid>

Future Plans to improve Access to National Trust Holiday Accommodation

- We are currently in the process of writing accessibility guides for all our holiday cottages and bunkhouses and improving access over time for all our guests. All feedback is very helpful in informing us of ways in which we can improve access. We welcome any comments or ideas from you about access at this cottage and thank you for taking the time to do this. Please do this in the most convenient way for you. See contact details below or information on website.

About the Accessibility Guide

- This Accessibility Guide is intended to provide key information about the accommodation that may be particularly relevant to guests with disabilities. Please contact us prior to booking if you would like information that is more specific and we will be happy to oblige.
Email: holiday.enquiries@nationaltrust.org.uk
Phone: 0344 8002070

Access for All at the National Trust

- The Access for All office works to improve access at all National Trust accommodation and properties. The office welcomes comments and ideas on improving access.
Phone: 01793 818531
Email: accessforall@nationaltrust.org.uk

Date: June 2026