

White Lodge

Ganllwyd
Gwynedd
LL40 2HN

Ref: 008051



Introduction

- The cottage can accommodate four people.
- Electric storage heaters throughout the cottage.
- Parking available for tow cars next to front door.
- Dogs are not permitted at the property.

White Lodge is arranged as follows.

Ground floor

- Sitting/dining room with TV, DVD and radio.
- Kitchen with a good range of units with built in washer, fridge, and freezer.



First floor

- One twin bedroom and one double bedroom accessed by stairs.
- Bathroom with electric shower over bath.



Pre-Arrival

- See the main webpage for booking and location details.
- Please contact us prior to booking if you have any specific access requirements.
- Directions provided with booking.
- Bringing a torch is advised if arriving in the dark as there are few streetlights here.

Approach

- Access to this cottage is direct from a good A road, through gates onto a hard core drive and parking area.

Arrival & Parking Facilities

- The key to the cottage is located in a key safe which is on the porch wall facing the door on the left hand side as you approach. The combination will need to be entered to open the key safe (the button for each number must click). The same combination code then needs to be entered a second time to enable the key safe to be closed.
- Side and rear garden area with washing line. Side slated parking area with ornamental gate entry.

Getting in (and out) of the cottage

- The front step is 10cm up into the porch which has an entrance of 90cm.
- The step into the hall is just over a low weather board.
- Porch to hall door is 74cm wide.

- The back door has a clear opening width of 64cm and is reached via metal staircase from the rear garden. Each step is approximately 25cm high and the width of the stairs is 75cm.



Getting around the cottage.

Ground floor.

- Level access from front porch door through lounge/dining room and kitchen.
- Internal clear opening door widths on the ground floor are living room to kitchen 74cm, kitchen to rear door and stairs 70cm.
- Downstairs is a mixture of hard floor and carpet, kitchen being vinyl and living room being mainly carpeted.
- In the living room the settee is 50cm to the top of the seat cushions, the chairs are 45cm.
- The dining room table is 74cm high and the matching chairs are 43cm to the cushions.
- The kitchen worktops are 93 cm high as is the cooker.

First floor:

- Both bedroom doors are 73cm wide.
- The master bedroom has a king size bed at 60cm tall to mattress top.
- The twin has two single beds at 60cm high.
- The bathroom door is 60cm in width, the toilet is 40cm high to the seat, the sink is set in a unit and is 83cm high, the bath with shower has a side which is 55cm high.



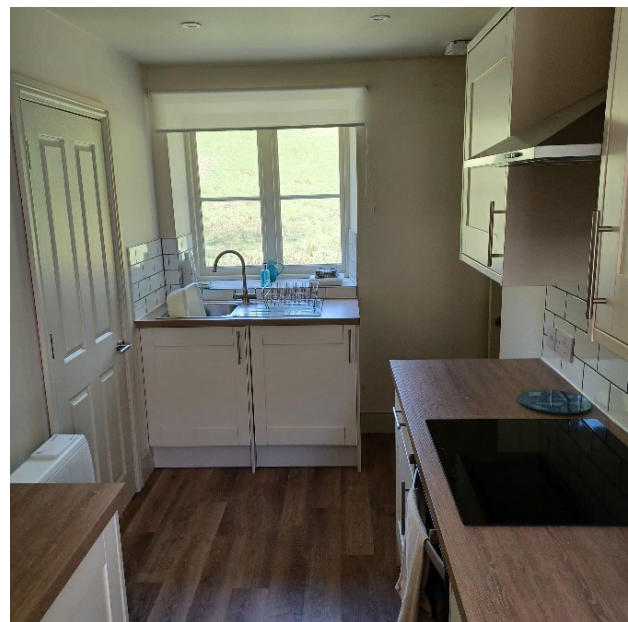
Bottom of stairs

Sitting/Dining Room

- One sofa.
- Two armchairs
- Two occasional lamps.
- Feature fireplace.
- TV, DVD and radio.
- Dining table and four chairs.
- Main ceiling light.
- Good natural light from triple axis windows to the front, side and rear.



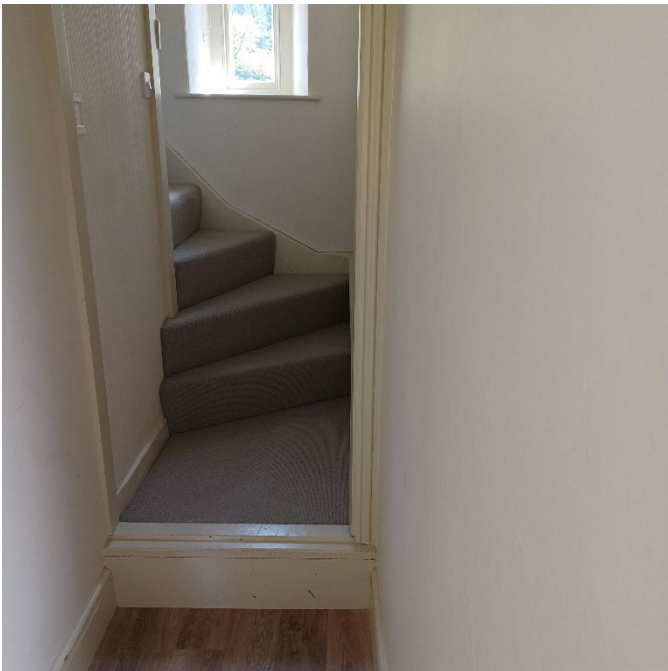
Lounge



Kitchen

Kitchen

- Good range of kitchen base and eye level units.
- Electric cooker and hob.
- Built in washing machine, fridge, and freezer, electric toaster, and electric kettle and microwave.



Start of staircase



Top of staircase

Master Bedroom

- King Size bed.
- Dressing table with mirror.
- Bedside table with lamp on each side.



Bathroom

- Bath with electric shower over in white with glass screens.
- Close coupled toilet with unit.
- Sink set in unit.



Twin Bedroom

- Two single beds.
- Bedside table with lamps between beds.
- Mirror wardrobe.



Garden

- Enclosed medium sized garden area with picnic bench and clothes line to one side and rear of property.

Additional Information

• In the event of a fire, it is the responsibility of the guests to evacuate the building. Vibrating fire/smoke detectors are available if requested at time of booking. Please contact us if you have any other specific access requirements in this respect.

Facilities at all cottages

The National Trust aims to expand the list of accessible /equipment/items available at each cottage and these may include

- Cordless kettle
- Hollowfibre bedding
- Chair with armrests
- Good reading light
- Large handle vegetable peeler
- Easy tin opener
- Non-slip mat for bath/shower
- Non-slip place mat
- Easy jar opener
- Information in alternative formats (on request)

Please note that we cannot guarantee that all items will be available at the time of your visit. Please enquire at the time of booking regarding any specific requests.

Specialist equipment

Other specialist equipment such as wheelchairs, bath seats, toilet frames etc may be available for loan or purchase from the local Red Cross loan centre. Please check this out before booking the Cottage and contact us if you require further information.

<https://www.redcross.org.uk/get-help/borrow-a-wheelchair>

<https://www.redcross.org.uk/get-help/hire-a-toilet-aid>

Future Plans to improve Access to National Trust Holiday Accommodation

We are currently in the process of writing accessibility guides for all our holiday cottages and bunkhouses and improving access over time for all our guests. All feedback is very helpful in informing us of ways in which we can improve access. We welcome any comments or ideas from you about access at this cottage and thank you for taking the time to do this. Please do this in the most convenient way for you. See contact details below or information on website.

About the Accessibility Guide

This Accessibility Guide is intended to provide key information about the accommodation that may be particularly relevant to guests with disabilities. Please contact us prior to booking if you would like information that is more specific, and we will be happy to oblige.

Email: cottages@nationaltrust.org.uk

Phone: 0344 8002070

Access for All at the National Trust

The Access for All office works to improve access at all National Trust accommodation and properties. The office welcomes comments and ideas on improving access.

Phone: 01793 818531

Email: accessforall@nationaltrust.org.uk

Date May 2023