

## Accessibility Guide

### Wren

How Hill Cottages

How Hill Road

Ripon

HG4 3AP



What3Words:

/// stencil.prices.vans

Brochure ref: 020028



## Introduction

Situated less than a mile from Fountains Abbey, a World Heritage site with spectacular ruins of a 12th-century Cistercian abbey, the cottages at How Hill are situated around a courtyard and have been converted from a group of 18th-century farm buildings. The tower on the hill behind the cottages is believed to have been originally built as an outlying chapel for the Abbey. It was restored by John Aislabie, when he owned the Estate, and rumour has it that he used it as a gambling den. The farm buildings at the side of the tower were added at a later date and the property was occupied until the 1950s.

These farm buildings have been sympathetically restored using traditional materials whilst incorporating modern green technology such as the use of Ground Source Heat Pump in the heating system. The cottage has generous living space for 6 has central heating, a wood-burning stove and shared paved courtyard around which it is situated.

The Cottage is arranged as follows:

**Ground Floor:** entrance lobby, open-plan kitchen/sitting/dining room with wood-burning stove, double bedroom (with 6' bed which can also be a twin on request), shower room with wet-room, toilet, sink and hand washing basin.

## Pre-Arrival

- See the main webpage for Fountain Cottage ( <https://www.nationaltrust.org.uk/holidays/wren-yorkshire>) for booking and location details.
- To enable our housekeepers to prepare the cottage for any particular accessibility requirements you might have, please contact [guestrelations@nationaltrust.org.uk](mailto:guestrelations@nationaltrust.org.uk).
- Directions are provided electronically three weeks prior to travel. If you need a printed (or large print) version of any of our holiday documents, please contact [guestrelations@nationaltrust.org.uk](mailto:guestrelations@nationaltrust.org.uk).
- If, having read this accessibility guide, you still require further information, e.g. a social storybook guide, please contact [guestrelations@nationaltrust.org.uk](mailto:guestrelations@nationaltrust.org.uk)

## Approach

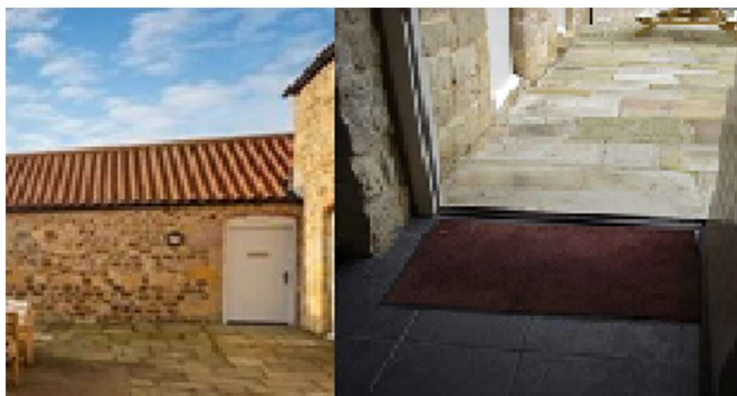
- The cottage is easy to find using the local directions provided by the Contact Centre
- A gentle slope leads from the car-park area to the cottage
- There is a distinct National Trust sign indicating location for How Hill Cottages
- The surrounding area is gently sloped and once away from the cottages it is hilly in places

## Arrival & Parking Facilities



- The tarmac car-park is easy to find on turning in from the lane
- The cottages are very well signed
- There is space for the larger mobility vehicle
- Utility areas such as the log and bin stores are found in this area (1 step of 100mm)
- Designated parking for two vehicles

## Getting in (and out) of the cottage



Entrance in shared courtyard, no step into Wren

## Getting around the cottage

Circulation space is good in the main living area, the cottage is all on one floor.

Floor surfaces are firm and level, slate/ceramic tiles, timber floor-boards with rugs and close-weave carpet are used.

Doors are easy to open and are over 800mm wide throughout the cottage. Internal lobby is 1020mm wide

Illumination is good in all areas

## Open Plan Kitchen/Sitting/Dining Area

Kitchen: Modern galley kitchen with limited aisle space – 900mm between kitchen units. Kitchen length is 2900mm

Under cabinet lighting, hob-light and natural light from living space windows

Electric oven with front controls, drop down oven door. Stainless-steel extractor hood. Height of worktop is 920mm to floor level

Cordless kettle, microwave, dishwasher

Sitting area: Door to lounge is 840mm clear width

1 wing arm-chairs at 480mm to cushions. Straight arms. 1 x 2-seater settee at 470mm to top.

Firm cushions Beams are above 2.1m

Standard and table lamps are provided (low energy lighting) Easy-to-close curtains at full height windows

Modern flat-screen Freesat TV, DVD player, Roberts DAB radio Full height glazing offering spectacular views of the countryside.

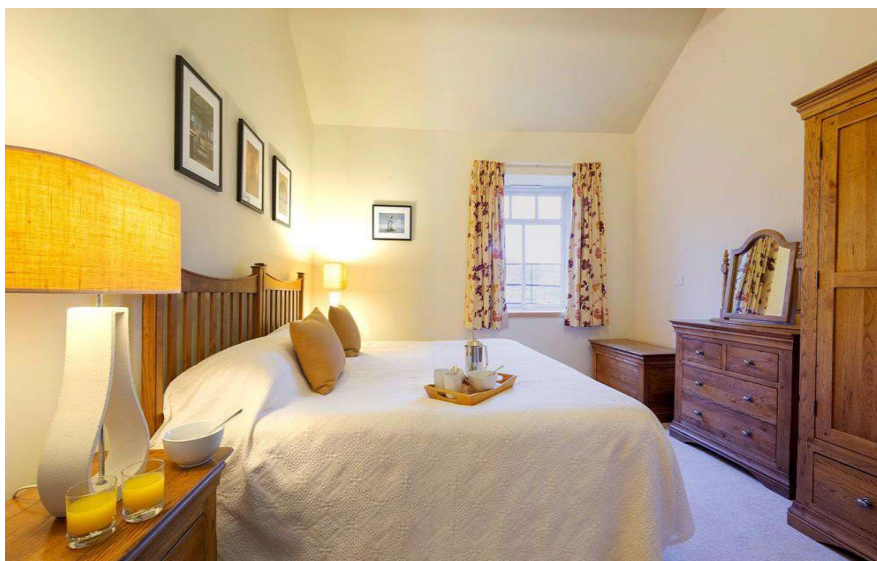
Access to garden through glazed doors. Sliding doors with weather bar threshold at 35mm.

Dining area: Dining table height to top of 760mm with 100mm fascia. 2 dining room chairs. Log Burner.





## Bedroom

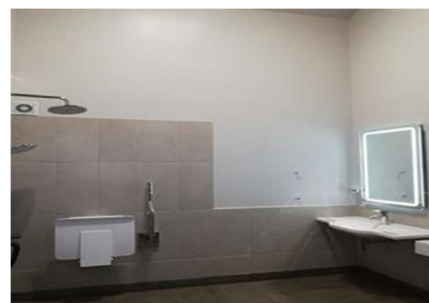
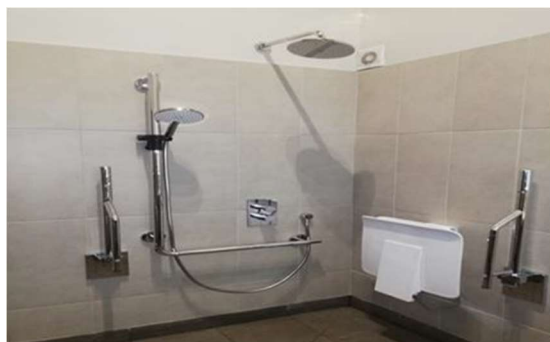


Door into room 840mm. Easy to open  
Divan bed – zipped to convert to twin on request  
Bed-side lights (low energy bulb units)  
Clear space of 1050mm to side of the bed  
Windows at 840mm looking out over moorland  
Bed-height 650mm

## Bathroom

### Basin and hand-rinse basin and toilet details

Mirror and vanity basin with integrated handgrips  
Back-lit mirror with de-mister, offering soft illumination for improved visibility 1000mm high, ensuring full visibility whether standing or seated. Chrome accessible mixer tap with single long lever which is easy to use and helpful for anyone with limited dexterity.





Door handle height 1160mm  
 Toilet height without seat 4220mm with seat 4450mm  
 Shower chair height 4900mm  
 Height to shower controls 8600mm  
 Basin heights 7750mm and 7400mm

## Courtyard



- Mostly level tarmac area. Picnic benches for each cottage.
- Paving stones are well maintained with level mortar-joints.
- Laundry room for shared use (step of 100mm)

## Additional Information

- Assistance dogs are welcome at all our cottages. If you are bringing an assistance dog to a non-dog cottage, please contact [guestrelations@nationaltrust.org.uk](mailto:guestrelations@nationaltrust.org.uk) so we may contact all future guests in case of an allergy.
- In the event of a fire, it is the responsibility of the guests to evacuate themselves. Under pillow vibration alarms are available if requested at time of booking.
- If you required the WiFi to be turned off, please advise us in advance.
- If you have any allergies, please contact [guestrelations@nationaltrust.org.uk](mailto:guestrelations@nationaltrust.org.uk).

## Specialist equipment

Other specialist equipment such as wheelchairs, bath seats, toilet frames, hoists etc. may be available for loan or purchase from a local disability equipment provider. For further details, please contact [guestrelations@nationaltrust.org.uk](mailto:guestrelations@nationaltrust.org.uk). Please note that any contacts supplied are done so in good faith and are not endorsed by the National Trust.

## Feedback

All feedback is very helpful in informing us of ways in which we can improve access to all our accommodation. We welcome any comments or ideas from you to [guestrelations@nationaltrust.org.uk](mailto:guestrelations@nationaltrust.org.uk).