



ENGLISH HERITAGE

INSECT PESTS

IN HISTORIC HOUSES AND MUSEUMS

1 PLASTER AND FUNGUS BEETLES

Feed on fungi in damp conditions



● **Plaster beetle**
Adistemia watsoni



● **Fungus beetle**
Cryptophagus sp.

1 SILVERFISH

Adults and nymphs feed on damp paper, starch and mould



● **Silverfish**
Lepisma saccharina



● **Grey silverfish**
Ctenolepisma longicaudatum

1 WOOD WEEVIL

Adults and larvae live in very damp sapwood



● **Wood weevil**
Euophrys confinis

1 BOOKLOUSE

Adults and nymphs live in damp conditions and feed on paper, starch and mould



● **Common booklouse**
Liposcelis bostrychophila

2 LARDER AND HIDE BEETLES

Larvae eat dried meat, skin, fur and feathers. Found on dead birds and rodents



● **Larder beetle**
Dermestes lardarius



3 WOOD-BORING BEETLES

Larvae tunnel in wood. Adult beetles make exit holes



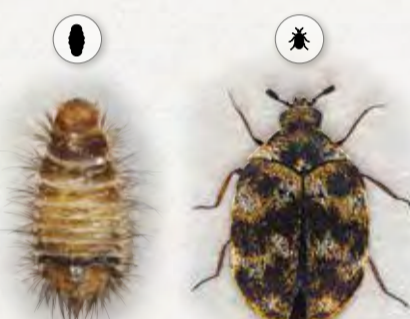
● **Furniture beetle or woodworm**
Anobium punctatum
Larvae make tunnels in sapwood of hardwoods



● **Deathwatch beetle**
Xestobium rufovillosum
Larvae make tunnels in oak timbers which have been damaged by damp

7 CARPET BEETLES

Larvae eat wool, skin, fur and feathers



● **Varied carpet beetle**
Anthrenus verbasci



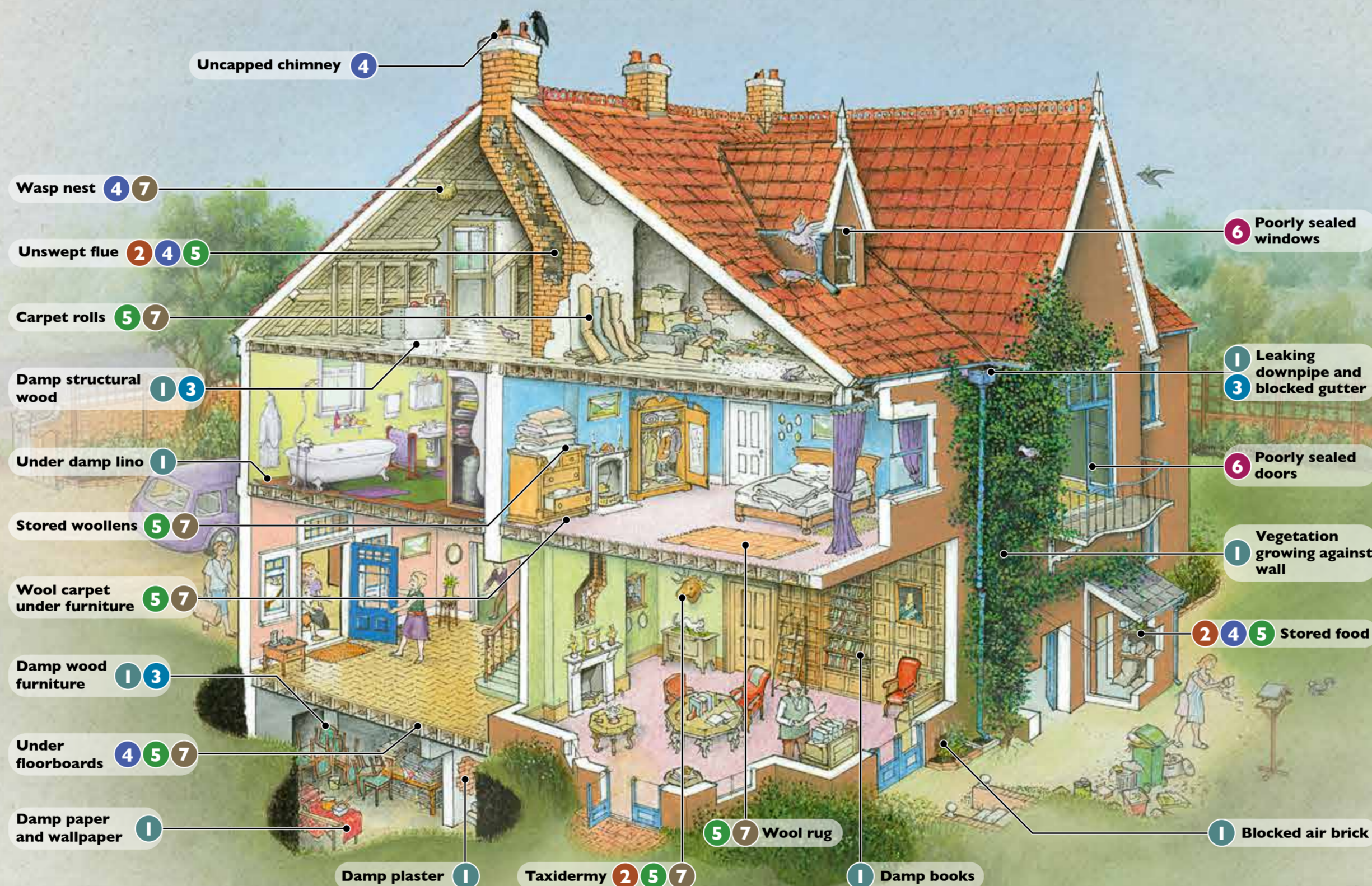
● **Guernsey carpet beetle**
Anthrenus sarnicus



● **Two-spot carpet beetle**
Attagenus pello



● **Brown carpet beetle or 'vodka' beetle**
Attagenus smirnovi

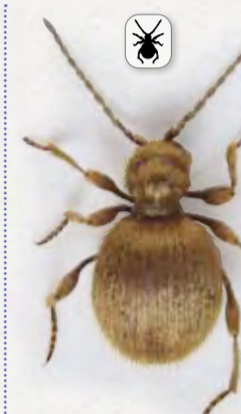


4 SPIDER BEETLES

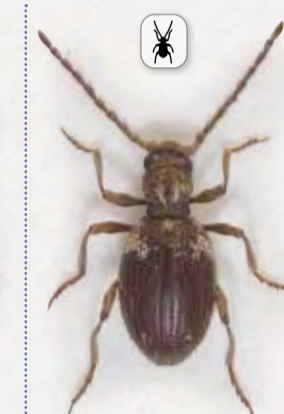
Found in bird nests and blocked chimney flues, the larvae feed on dead insects, dried food and plant material



● **Australian spider beetle**
Ptinus tectus



● **Golden spider beetle**
Niptus hololeucus



● **White-marked spider beetle**
Ptinus fur

4 BISCUIT BEETLE

Larvae tunnel through dried food and plant material with a high starch content



● **Biscuit beetle**
Stegobium paniceum

4 MEALWORM

Found in old cereals, bird nests and chimney flues feeding on organic debris



● **Mealworm**
Tenebrio molitor

6 LADYBIRDS

Adults come indoors to hibernate in winter months



● **Harlequin ladybirds**
Harmonia viridis

6 WOODLOUSE

Live in decaying wood and other organic matter and will not survive in dry indoor conditions



● **Woodlouse**
Porcellio sp.

6 GROUND BEETLES (CARABIDAE)

Predatory insects which come indoors for shelter



● **Black ground beetle**
Pterostichus sp.

6 CLUSTER FLY

Adults come indoors to hibernate in winter months



● **Cluster fly**
Pollenia rudis

5 CLOTHES MOTHS

Larvae eat wool, skin, silk, fur and feathers



● **Common or webbing clothes moth**
Tineola bisselliella
Larvae produce silk webbing



● **Case-bearing clothes moth**
Tinea pellionella
Larvae live in silk cases



● **Pale-backed clothes moth**
Monopis crocipitella

5 HOUSE MOTHS

Found in bird nests and blocked chimney flues, the larvae feed on damp textiles and organic debris



● **White-shouldered house moth**
Endrosis sarcitrella



● **Brown house moth**
Hofmannophila pseudospretella

5 MEAL MOTHS

Found in kitchens, the larvae eat dried food including cereals, nuts and dried fruit



● **Indian meal moth**
Plodia interpunctella