



ORIGIN

A DEEP LISTENING EXPERIENCE

Welcome to ORIGIN

This visual guide contains information about ORIGIN with pictures to help you prepare for your visit.

Planning your visit	3
FAQs	4 - 5
Arriving at Dunham Massey	6
Visitor Centre	7
Tickets	8
Arriving at ORIGIN	9 - 10
ORIGIN	11 - 13
Exit	14
Inner courtyard	15

Planning your visit

Address:

Dunham Massey - National Trust
Woodhouse Lane
Altrincham
WA14 4SJ

By foot

Dunham Massey is close to the Trans Pennine Trail and Bridgewater Canal. The nearest transport hub is 2.5 miles away (Altrincham Interchange).

By bike

Dunham Massey is close to the Trans Pennine Trail and Bridgewater Canal. Cycling in the park is only permitted for under 5s, so please make use of the bike parking by the Visitor Centre.

By public transport

The closest train station is Altrincham (3 miles). From Altrincham, you can catch the hourly 280 bus which stops outside the entrance gate. Buses from Warrington take 40 minutes and stop a 20 minute stroll away through the park.

By car

Dunham Massey is located on Woodhouse Lane in Altrincham, off the A56. Exit at junction 19 off the M6; and junction 7 off the M56. Parking is available on site and is included in general admission. There are accessible spaces available for parking close to the Visitor Centre.

FAQs

Can I hire a wheelchair or Personal Mobility Vehicle?

You can hire a wheelchair or Personal Mobility Vehicle (PMV) to use during your visit by calling 0161 941 1025. Whilst sometimes available on the day, it is best to pre-book to ensure availability. PMVs cannot enter ORIGIN but we can provide a wheelchair for your visit to the experience.

What facilities are there onsite?

There are toilets (including accessible and baby changing), a café, restaurant, ice-cream parlour and a gift shop onsite.

What are the opening times?

From 1st May - 1st November 2026 the site is open 9am - 5pm. First entry to ORIGIN is at 11am and last entry is 3pm. You can check our full opening times on our website. In the very rare event that weather conditions present a danger to visitors we will close the site on short notice. These closures will be advertised on our website.

Are there quieter times to visit?

Dunham Massey is a popular site and it can be crowded at times. If you would prefer to visit when it is quieter, we recommend weekdays outside of school holidays.

What is ORIGIN?

ORIGIN is a durational sound installation on a continuous loop. Audiences can expect to spend 30 – 40 minutes inside (though you are free to leave whenever you would like). Visitors are invited to lie back on the mats provided, or accessible seating is also available.

Do I need a House ticket to visit ORIGIN?

Yes, visiting ORIGIN requires either a 'House, Park and Gardens' ticket or a National Trust membership. There are no additional admission fees to experience ORIGIN.

How much time do I need to experience ORIGIN?

ORIGIN runs on a loop so it's up to you how long you spend in the experience. Most people will be inside for 30 - 40 minutes. You can leave the experience whenever you wish, however, you may not be able to re-enter after you have left.

Is ORIGIN suitable for children?

We recommend that ORIGIN is suitable for children aged 12+.

Can I touch the objects in the rooms?

We would ask that you do not touch the objects (vases, big and small lights) while you are in the space.

FAQs

Are dogs allowed in ORIGIN?

Assistance dogs only are allowed inside the House and ORIGIN.

Can I eat or drink inside ORIGIN?

Food and drink cannot be consumed inside the experience. There are lockers in the House entrance which you can use to store any items while you are inside ORIGIN.

Can I take my bag in ORIGIN?

We would recommend storing larger bags in the lockers in the House entrance but if you prefer, you can take your bag inside the experience. Please note, floor space in the experience is limited.

Can I use my phone and take photos/videos inside ORIGIN?

We ask that all phones/devices are turned to silent and kept in your pocket/bag during the experience. If you will need to use your device for any reason, please let a member of staff know as you enter the experience. Photographs and videos are not allowed inside ORIGIN.

Are there toilet facilities in ORIGIN?

There are no toilet facilities in ORIGIN or the House. The nearest toilets are located next to the Stables restaurant, a short walk from the House entrance.

Is strobe lighting used?

No, there is no strobe lighting as part of ORIGIN. The lights do flicker at some points.

Is it loud?

The music volume does vary and at times it does get loud. There are ear defenders available should you like to use them - please ask a member of staff at the ORIGIN entrance.

Is ORIGIN suitable for those with sensory sensitivities?

The experience has been designed to tune in to our senses - particularly visual and aural. Many people find the experience stimulating and visitors can respond to it in many different ways. You are free to leave the space whenever you would like, so if you experience any discomfort, there is no requirement to stay. If you do leave and want to re-enter, we ask that you speak to a member of staff at the entrance first. The inner courtyard is available as a space afterwards, should you need space and time to decompress.

Will the experience be dark or light?

The light levels change throughout the experience but it predominantly stays on the darker side. There is one very brief moment of complete blackout.

Arriving at Dunham Massey



If you have caught the 280 bus from Altrincham, you will disembark close to the pedestrian gates. Follow the grass path alongside the paved road to the Visitor Centre.



If you are arriving by car, you will enter through the main gates and carry along to the car park. There will be a member of staff in the car park kiosk who will scan your membership card or help you purchase a ticket before you park your car.

You can find spaces for accessible parking on the left, close to the Visitor Centre.



If you are arriving by other public transport, foot or bike, you might enter over the parkland stiles and footpaths. You will need to follow signs to the Visitor Centre.

Visitor Centre



From the carpark, you can access the Visitor Centre either via the sloped walkway or a short set of stairs.

Inside, you'll see our Welcome team who wear black t-shirts with an orange National Trust oak leaf on. Other members of staff may be around and should be identifiable through their National Trust lanyards.



In this building, there is a shop, a café and a second-hand bookshop. There is an accessible toilet with a track hoist, a wash and dry shower and a changing bench, as well as a standard accessible toilet, male and female toilets and baby changing facilities.

The hand driers in the toilets make a loud sound and the area around the toilets may get busy.

As the café is in this building, there might be strong food smells.



The Visitor Centre can be busy, with lots of people and noise. Crowds are more likely during weekends and school holidays. There are ear defenders available - ask at the Welcome desk if you would like to borrow a pair (no fee).

Tickets



There are no additional fees to experience ORIGIN but you will need to either have a National Trust membership or purchase a 'House, Park and Gardens' ticket.

If you have entered through the carpark you will likely already have purchased a ticket or had your membership card scanned. If you still need to buy a ticket, you can do so at the Welcome desk in the Visitor Centre.

House, Park & Garden (from 9 March 2026)		
	With Gift Aid	Without Gift Aid
Adult (18+)	£22.00	£20.00
Child (5-17) under 5s free	£11.00	£10.00
Family (2 Adults and up to 3 children)	£55.00	£50.00
Family (1 adult and up to 3 children)	£33.00	£30.00

Admission prices 2026

You will need to show either your ticket or your National Trust membership card when you enter the House.

Arriving at ORIGIN

ORIGIN takes place inside the House. You can follow the signs from the Visitor Centre, directing you to the House.

There is an accessible walking route to the House from the Visitor Centre. This route is approximately 0.3 miles and will take around 10 minutes walking. The route is on a flat level surface, with one short slope and a couple of gates.

There is a volunteer-run shuttle buggy service between the Visitor Centre, House and Gardens. As it operates subject to volunteer availability it may not be available every day. If you require the buggy, please call ahead to check it is running. Personal Mobility Vehicles (PMVs) are also available to borrow on the day but we advise booking in advance to ensure availability.



Accessible route:

The accessible route is suitable for wheelchairs, PMVs and buggies and has benches along the first half if you need to take a break.

Leave the Welcome building through the double doors on the left of the shop.



Follow the furthest path on the left up a graduated slope and along the path next to the moat. There are parts of open water without fencing so take care to stay on the path.



Go through the two white gates and continue straight along the path to the Mill.

Follow the path around to the left and down the main drive to the front of the House.

ORIGIN entrance

Entry to ORIGIN is through the front door of the House.

To reach ORIGIN, you will go through the House entrance. As the House can be busy, you may need to queue for a short while. The House entrance can be noisy, with visitors sorting out buggies and lockers. As the doors are open, on a sunny day there can be a lot of bright light and dark shadows.



There are four steps to enter the House. The heights are not uniform and the biggest rise is 15cm. If you are using a PMV or wheelchair, you will need to ask a member of staff at the House entrance for assistance.



As you enter, a member of staff will greet you. They will ask to see either your National Trust membership card or ticket. Let them know you are here to experience ORIGIN and they will direct you to the ORIGIN entrance on the right.



Another member of staff will greet you. To manage the flow of the space, entry times are staggered. The member of staff may ask you to wait in the inner courtyard for a short while.

ORIGIN

A staff member will guide you into the first room. They will ask you to stay in this space for a short while. The staff member will leave this room for a few minutes.

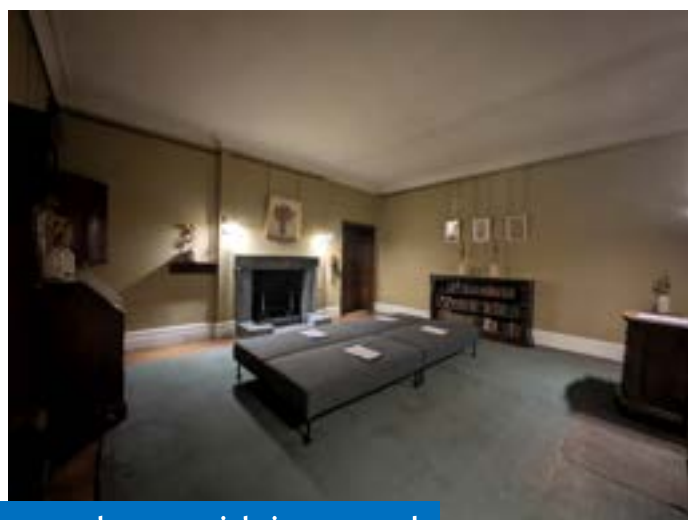


This room has lower lighting. This is to help your eyes adjust before you go into the next room, where it is darker.

There is instrumental music playing. You might still hear some noise from the House entranceway.

You can stand, walk around and/or sit on the low benches in this room.

We ask that you do not touch the vases, books or furniture around the edge of the room.



Room shown with increased light to show lay-out

There may be other visitors in the space with you but it shouldn't feel crowded.

There are information sheets on the benches for you to read. The information will also be read out before you go into the next room.

If at any point you would like to leave this space, you can exit through the door you entered from.

ORIGIN

The next pages will give you in-depth information about what ORIGIN looks like. The headlines of the experience are:

- the lights change colour and brightness. There is one short moment of blackout.
- the volume of the sound changes. At times it is very low and soft, at others it can be loud and intense.
- there is a mixture of instrumental music, spoken word and nature noises
- you can lie down on mats, sit on benches, stand and/or walk around the space
- there will be a member of staff in the space at all times, should you need any assistance

If you would like to avoid any further specifics about the experience itself, please go to page 14.



When it is time to enter, the member of staff will return and guide you through the next door, down a short corridor.



The lighting level is very low in the corridor. The staff member will have a torch - let them know if you would like them to turn it on and assist you.

ORIGIN



As you enter, you can choose to take a seat on one of the benches, lie down on a mat or stand/walk around the room.

There may be other visitors in the space and we ask you to be mindful of their experience by keeping noise to a minimum.



The experience plays on a 20 minute loop. There is no time limit on the experience (other than House closing times) so you can stay for as long or as little as you would like.

There are a variety of noises throughout, including speech.



The photos show some of the variety in colours and brightness levels.

There are small lights around the room and a large structure towards the rear. The large structure lights up at times. Inside, there is a sculpture of a *cardiocrinum giganteum* (giant Himalayan lily) bulb.

Leaving ORIGIN

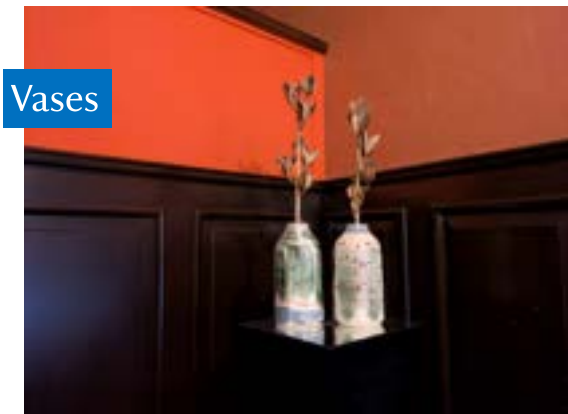


When you are ready to leave, you will exit through the doorway in the centre of the room. There are velvet curtains covering the doorway - a member of staff will be in the room to assist if needed.



You will enter a corridor that takes you back to the House entrance hall. The lighting in this corridor is varying and low in parts.

There are stands along the corridor. We ask you do not touch the vases or dried flowers, due to their delicate nature, but please take a look.



At the end of the corridor is a visitor book. If you would like, you can leave a comment about your experience in ORIGIN. There is also a QR code you can scan to fill out a survey. Both of these are optional.

At the end of the corridor is a doorway. As you exit, the inner courtyard is on your right and main exit on your left. The corridor straight ahead takes you onto the one-way route of the House.



Comment book
and survey

Inner courtyard



As you leave the corridor from ORIGIN, the inner courtyard is to your right. There is a small step, or alternatively, a ramp to access.

The inner courtyard is a calm space. You can walk around the paths and/or sit on one of the benches. Other visitors may be in the space but it shouldn't feel crowded.



There is a fountain which makes a splashing sound. There are plants and willow sculptures - they are delicate so we would ask that you do not touch them.



You can spend as long as you like here (subject to opening times) before exiting through the main entrance or continuing around the House.

We hope you have found this guide useful in preparing for your visit.

If you have any questions or comments, please email
dunhammassey@nationaltrust.org.uk