

East Pool Mine Access Statement

Trevithick Road, Pool, Nr Redruth, Cornwall, TR15 3NP T: 01209 315027

E: eastpool@nationaltrust.org.uk

Introduction

East Pool Mine is a former tin and copper mine located in the heart of the Cornish Mining World Heritage Site. The Mine is made up of two separate sites: Taylor's Engine House (with reception building) and Michell's Engine House.



- East Pool Mine is located in Pool, near Camborne.
- It is a former industrial site, located in an urban setting.
- There is full mobile and 3G coverage at both sites.
- Assistance Dogs are welcome in all areas of the site. Non-Assistance Dogs are welcome in outside areas and in the reception building. Please keep dogs on a lead.
- The main site is made up of the visitor reception area, a series of buildings housing toilets, a film room and boiler house, mining ruins and Taylor's Engine House.
- These buildings are surrounded by paths and gardens where there are areas of uneven surface.

Arrival & Parking Facilities

- Taylor's Engine House and the reception building are located behind Morrison's Supermarket in Pool, just off the A3047 at Illogan Highway.
- Accessible parking is located on site immediately adjacent to the reception building. The access route is via Trevithick Road, postcode TR15 3NW although this is not signposted.

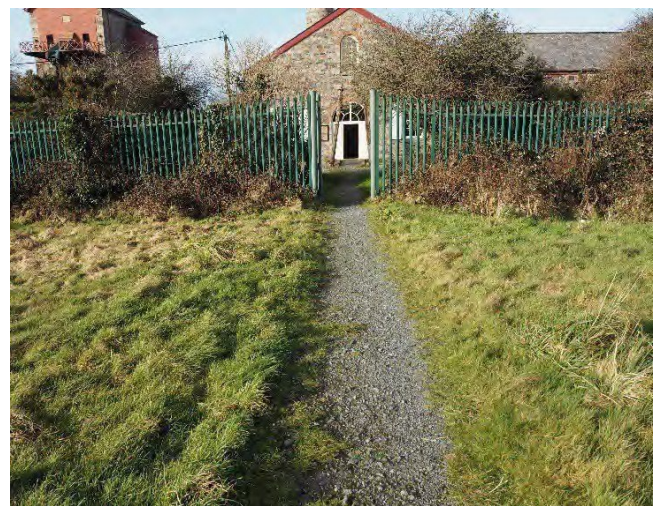


- The accessible parking bays adjacent to the reception building are 9 metres from the visitor entrance, accessed by a ramp. The surface is compact soil and gravel and is uneven.



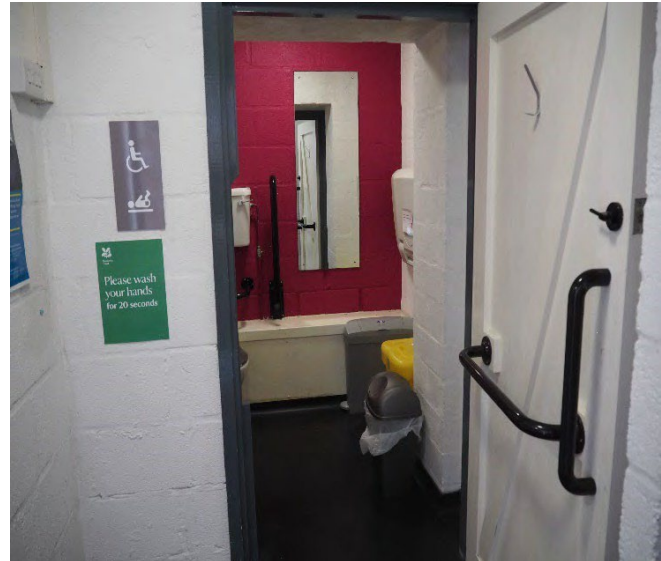


- The main visitor parking area is located at the far end of Morrison's supermarket car park. This carpark is open from 7am until 10pm.
- Parking spaces for East Pool Mine are not marked as such but the entrance to the mine is clearly visible with a National Trust sign at the top of the entrance path.
- The entrance gate is 120cm wide.
- There is a sloping, curved, gravel pathway which runs from the carpark to the main entrance to the site, approximately 50m in length.



- The external surface of the whole site is either gravel, concrete or grass. As it is an industrial site, there are some uneven surfaces.

WCs



- There is a fully accessible/family toilet located within the main toilet building, which is to the right of the reception building. This toilet has an emergency alarm which goes through to reception.
- This accessible facility is 2.5m X 2.5m with wide entrance and space for movement.
- The entrance to the toilet facility is 83cm wide, the doorway to the accessible/family room is 90cm.
- The WC is in the right-hand corner in the room, with support bars facilitating transfer to the right. The room also has a drop-down baby changing table and facilities for nappy disposal. It does not have an adult changing facility.
- All toilets have automatic hand dryers and movement-activated LED lights.



Reception and Compressor House

- There are two entrances to the Visitor Reception building. Both have gentle ramps and wide inward-opening manual doors. Doors are held open during opening times.
- The reception desk is 90cm high, and 75 cm.
- Due to the high ceilings, the acoustics in this room means that it can be quite loud during busy periods. Ear defenders are available for use at the welcome desk.



- The area is lit by natural light and high, warm artificial lighting.
- There are three seats available in this room and the chairs are wooden with seat height of 44cm (floor floor) with no arm rests. The back is 44cm at it's highest point.
- There is an induction loop at the reception area.
- There are no wheelchairs or powered mobility vehicles available for loan.
- The space between displays is 115cm at the widest point and 92 cm at the narrowest point.

Film Room



- The film room has an even surface. There is a ramp that has a gradual decline leading to the Boiler Room. The ramp is 120cm wide.
- There are two wheelchair spaces at the front of the seating area.
- The film can be shown with subtitles and the film room is fitted with an induction loop.
- The cinema room is lit by low artificial lighting.
- The historical material and interpretation in the film room has a carpeted surrounding space that is 97cm wide from the seating to the viewing panels.



Boiler Room



- This room is accessed through two heavy fire doors, which are kept open.
- The ramp leading to the room is has a slight decline and is 110cm wide
- The floor in this room has an even concrete surface.
- The acoustics in this room mean that it can be loud. Ear defenders are available for use from the welcome desk.
- This area is lit by natural light.
- The boiler room leads to the flue tunnel underneath the chimney stack to the ruins of the Boiler House at the rear of the site.
- There are usually two plastic chairs situated in this area. They have no arm rests and the seat is 45cm height from the floor. The chair back is 37cm high from the seat.

Flue Tunnel



- The flue tunnel is accessed via a ramp with a slight decline from the boiler room. The ramp width is 105cm.
- The tunnel is lit by low, warm artificial lighting and some natural light at certain points.
- The width of the tunnel is 86 cm at its widest point and 76 cm at its narrowest. The ceiling height is 230cm.
- The floor of the tunnel is brick, it can be uneven and damp in places.
- The tunnel goes under the chimney stack.
- The exit is through a gate, which is 89cm wide and down a ramp with handrails.



External Boiler House

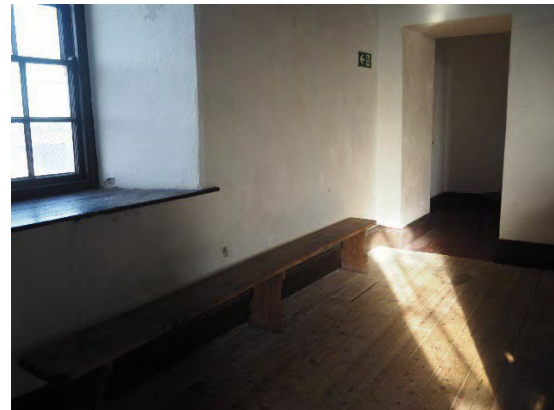


- The Boiler House foundations are directly accessed to the left of the exit ramp from the flue tunnel.
- The ground in this area is, grass, gravel or concrete and can be uneven in areas.
- Continuing along the pathway, of compact mud and grass, at the back of the site brings you to the steps of the engine house.

Taylor's Engine House



- The engine house is accessed by steep stairs to the front door of the building, with a handrail. There are 13 steps and their average pitch is 22cm or more.
- Once inside the engine house there are further steps to access two higher floors. There is seating on the lower and middle floor. The seating is a low bench, with no back or arm rests.



- The lighting is natural light and low, with warm artificial light.
- After descending the stairs to exit the building, the surrounding area is level with mixed surfaces of grass and gravel.
- There is a 3D tour of Taylor's Engine House on the East Pool Mine web page. Available here [Taylor's Engine House \(matterport.com\)](https://matterport.com/tour/taylor-engine-house). The tour is controlled by the user.

Balance Bob

- The balance bob is located externally accessed via a pathway to the side of the site office building.
- The path is compacted gravel leading to grass and is uneven in place.
- There is a bee's nest situated under the eaves, to the end of the office building.



Outside Seating and Garden Area

- There is a wild garden area that surrounds the buildings on the site.
- A path of compacted grass, gravel and some mud goes around the whole site. This path is uneven in some places.
- There are three fixed picnic tables with benches. The benches are 45cm high, with a distance of 39cm between the seating and table base. The tables are 75cm high.



Michell's Winding Engine House



- Michell's Engine House is located on Agar Rd approximately 0.3 miles from the main East Pool Mine site.
- The entrance is accessed through the gate, up a gentle slope from Agar Rd. The surface is gravel and can be uneven in places.
- There is disabled parking available adjacent to the entrance door.
- Entrance is through the main door which has a height of 196 cm and width of 89cm.
- The bottom floor is accessible and has an even concrete, painted floor.
- The lighting is natural light and low, with warm artificial light.
- There are plastic chairs available for seating on the bottom and top floors, with two chairs on each floor. They have no arm rests and the seat is 45cm height from the floor. The chair back is 37cm high from the seat.
- The higher floors are reached by wooden stairs, with a handrail.
- There are no toilet facilities at Michell's Engine House.
- Visitors can walk or drive over to the main East Pool Mine site at the back of Morrison's supermarket or drive down Trevithick Road for access to the accessible parking by the visitor reception and toilet facilities (please see above).
- There is a 3D tour of Michell's Engine House on the East Pool Mine web page. It can be viewed here [Michell's Engine House \(matterport.com\)](https://www.matterport.com/?q=3D-tour-of-Michell's-Engine-House) The tour is controlled by the user.

Michell's Winding Engine House





This building is to the rear of the Trevithick Road main site and accessed via the road in front of Wheal Agar bungalow, or via a pedestrian gate adjacent to Taylor's Engine House, about 200m from the main reception building. There is no parking outside the Miners Dry. Visitors can be dropped at the Dry entrance by vehicle or use the path from the main accessible parking, located outside the reception building. This path is compacted gravel, mud and grass and can be uneven in some places. The Dry is accessed via street level door, or bifold main doors which can be opened, weather permitting, by prior arrangement. This space is all one level inside, with a concrete floor. Please call 01209 315027 to discuss the availability of using this building..

Date : February 2024

About the Access Statement

This Access Statement is intended to provide key information about East Pool Mine that may be particularly relevant to visitors with disabilities. Please contact us prior to booking if you would like any further information. **Email:** eastpool@nationaltrust.org.uk **Phone:** 01209 315027

Access for all at the National Trust

The Access for All office works to improve access at all National Trust cottages and properties. The office welcomes comments and ideas on improving access. Phone: 01793 818531 Email: accessforall@nationaltrust.org.uk