

Access Statement

Lansallos, Looe, Cornwall PL13 2PX
T: 01726 870146 (South East Cornwall Ranger Office)
E: southeastcornwall@nationaltrust.org.uk
Web page: www.nationaltrust.org.uk/lansallos



Welcome

- A sheltered, sandy cove half a mile from the hamlet of Lansallos
- Reached by well-maintained but naturally uneven coastal and woodland paths with some steep sections, steps and stiles
- In Lansallos is a National Trust car park and the National Trust's Highertown Campsite
- There is mobile phone reception in the car park but not at the beach
- There is no designated wheelchair friendly route here, so we have simply described the waymarked path so you can decide if it is accessible for you.
- There are two council-maintained dog bins in the village – one outside the car park and one near the church. If these are full, please take your bags home with you, do not pile them up next to the bins.

Directions

- From Plymouth take the A38 and A390 turning left onto B3359 after East Taphouse. Follow signs for Lansallos
- From St Austell, take the A3082 to Fowey then take the car ferry across to Bodinnick. At Whitecross turn right and follow signs for Polruan then Lansallos.

Parking

- The car park is gently sloping. The surface is compacted gravel
- There is a Pay & Display machine.

National Trust

- Blue badge holders park free of charge
- National Trust members park free of charge: please scan your membership card at the machine.
- The car park is surrounded by a level grassed area where there is a fixed bench picnic table.
- There are no toilets at the car park or the beach. The nearest public toilet is two miles away at Lantivet car park near Triggabrowne (SX 157516) – this is a basic unisex toilet which would be accessible with a wheelchair, but it is not a designated accessible facility.



Car park entrance at Lansallos



Compacted gravel surface of car park

Information

- There is an information board next to the Pay & Display machine in the car park
- A designated trail is shown in pink on the map and waymarked with pink arrows



To follow the designated trail, turn left from the car park and head 200m down the road to the Church of St Ildierna, passing the entrance to Highertown Campsite on the way. Near the church next to the road is a bench (below right), the seat is 41cm high.



Campsite entrance



Road from car park to church



The start of the path to the beach next to the Church

The designated route is marked by pink arrows like the one on the post near the start of the path



At points along the footpath there are natural play areas with logs and tree stumps for balancing. Beryl's bench (middle right) is a peaceful spot for a breather. The seat is 56 cm high. A stream runs alongside the footpath and is crossed by footbridge. There is an 8cm step down to the footpath on the far side of the bridge.





The footpath slopes gently downwards before levelling out at a second bridge which crosses over the stream and leads to a footpath on the right. For the designated route, follow the pink arrow and keep on the footpath. Do not cross this bridge.



Go through the next gate and take the right hand lower path

Then go through a further gate and take the lower path towards the beach.



This path has some uneven stones and changes of level including a 23 cm step down.

The surface of the final section of path down onto to the beach is smooth rock and can be quite slippery





Lansallos is a sheltered sandy cove. A stream cuts from the back of the beach to the sea. The width and depth of this stream is dependent on weather conditions. The picture above right was taken in March looking back up to the beach to the waterfall flowing onto the sand.

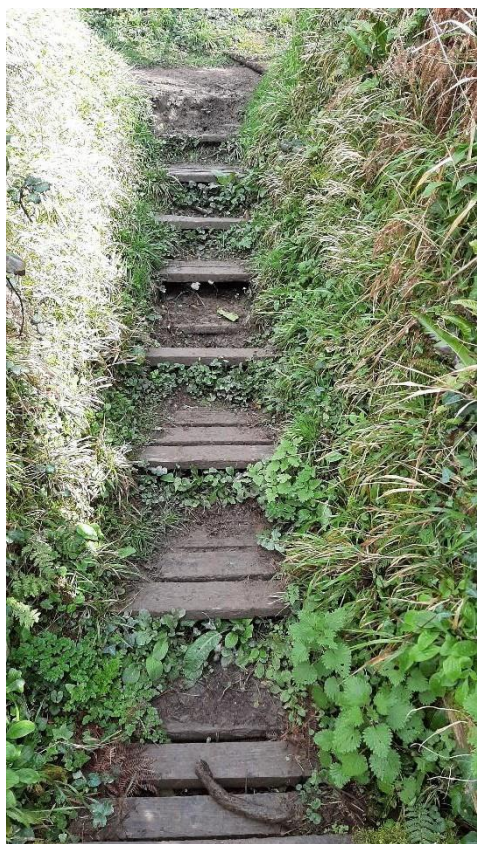


To continue along the designated route, leave the beach by the same path, but take the gate into the field above the beach. Head across the field towards the gate into the woods. Livestock may be grazing in this field at certain times of year.



Through the gate, the step up onto the footbridge into the woods is 17 cm high.





After the bridge there are eight steps up to the path into the woods. The steps are 12 cm high.

At the top of the steps follow the pink arrow and turn right along the footpath



As the path winds up through the woods there are 13 steps each is 17 cm high.

The path then slopes steeply up and out of the woods through a small gate





After the small gate, go through this large gate into the field. Follow the direction of the pink arrow and walk up along the edge of the field.

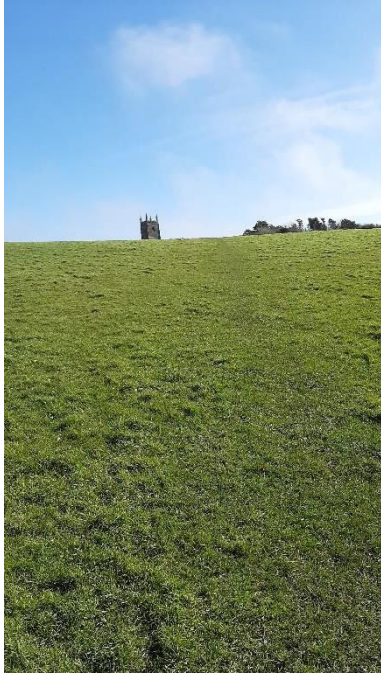


At the top of the field is a gate with a 10 cm step up onto a short boardwalk



At the end of the boardwalk there are four stone steps are built into the bank.

The fence at the top of the bank is 56 cm high. This picture on the right shows the steps down on the other side of the bank



The designated path goes across the field back towards St Ildierna's church.



From this field, there are great views back over the coast!





Near the church is a Cornish hedge with steps up. The strip of wood with the pink waymark arrow at the top of the hedge is 33 cm from the top of the hedge.

The picture right shows the other side of the Cornish hedge near the church



On the left of the footpath next to the church is the Highertown campsite field





The final hurdle before re-joining the country road near the church. This path can be muddy after prolonged rainfall.



Above is the end of the designated route viewed from the road. This is the bench next to the church near the start of the walk pictured on page 3.

Dated January 2023