

Penrose Access Statement

Last updated: 10 October 2023

Penrose, Helston, Cornwall, TR13 0RD

T: 01326 554082

E: penrose@nationaltrust.org.uk

W: nationaltrust.org.uk/penrose

Introduction

Penrose is a place of natural beauty, nature and history, with over 17 miles of footpaths and bridleways of varying degrees of difficulty to explore. Woods, farmland, Loe Bar and its neighbouring coastline surround Loe Pool, Cornwall's largest freshwater natural lake. The Stables Café is located next to the Walled Garden at the centre of the Parkland. There is outdoor gym equipment at various points along the route from Parkland to Loe Bar.

Points to note

- There is a 1.5 mile tarmacked year-round accessible route from Helston Drive, starting at Helston Fairground car park to The Stables Cafe and walled garden.
- Mobile phone reception is good across the countryside but poor at Loe Bar.
- Penrose house and some parts of the gardens remain private and not open to the public.
- There are no mobility vehicles available for hire.
- There is no visitor reception building at Penrose.
- Toilet facilities are next to The Stables café including an accessible toilet. There is no changing places toilet facility. The toilets are open when the café is open.

Arrival & Parking Facilities

Penrose is 2 miles southwest of Helston on the B3304. There are no brown signs.

Helston Fairground car park (not National Trust)

- A large, free council owned car park on Porthleven Road, opposite the Helston Boating Lake.
- There are approximately 250 spaces.
- There are no disabled parking bays.
- The car park is hard packed gravel with lots of potholes.
- The car park is located at the start of Helston Drive which is the most accessible route to Penrose.



Helston Fairground car park

Accessing Penrose from Helston Fairground car park

- The Helston Drive route from Helston Fairground car park to The Stables café and walled garden is 1.5 miles.
- To access Helston Drive, follow the tarmacked pedestrian footpath by the grass verge.
- Follow the path along the main road towards the large grey gate.
- There is pedestrian access between two granite posts next to the gate. The width between the posts is 1 metre.
- The route is tarmacked most of the way and on an even gradient except from some short sections with a steeper incline in the parkland.
- A short section from Helston Lodge towards the parkland is not tarmacked & is uneven.
- There are 7 plank benches on the route.
- There is a welcome and orientation board at the start of Helston Drive highlighting way marked walks and onsite facilities.



Access path from car park

Entrance route to Helston Drive



Pedestrian access to
Helston Drive



Bench on Helston Drive



Helston Lodge

National Trust car parks

PenroseHill

- Follow the B3304 from Helston to Porthleven, roughly 1.5 miles from Helston Fairground car park / Helston boating lake.
- There are signs on the B3304 indicating where to turn into the car park.
- There are approximately 40 spaces.
- The car park is on a slope from the main entrance to the pedestrian exit at the bottom.
- The car park is hard packed natural stone surface.
- There are two disabled parking spaces at the bottom of the car park.
- The path leading from the car park to the tarmacked parkland is approximately 20 metres long and is 109cm wide. There is a small wooden gate at the bottom. Note this path can be muddy in winter or after rainfall.
- The Stables and walled garden are approximately 0.6 miles along a tarmacked drive through the parkland which is mostly on a downhill incline.
- There is a welcome and orientation board at the bottom of the car park highlighting way marked walks and onsite facilities.



Penrose Hill car park disabled parking and path leading to wooden gate and parkland.

Degibna

Follow the A394 turn onto Meneage Road (also the A394), then turn into Degibna Lane next to Helston Minor Injuries Unit. Follow the road for approximately 2 miles and turn right when you reach Degibna chapel. There are approximately 40 spaces. Degibna car park is level hard packed natural stone surface. There is no formal disabled parking.

Chyvarloe

Follow the A3083 from Helston and take the first right opposite RNAS Culdrose entrance. Follow the road for 0.3 miles and take a right at the green triangle. Follow this road past the farm and car park is at the end on the right. There are approximately 20 spaces. There is no formal disabled parking.

Parc-an-als

The postcode is TR13 9ES, accessible only from Porthleven. There are approximately 20 spaces and no formal disabled parking.

Toilets

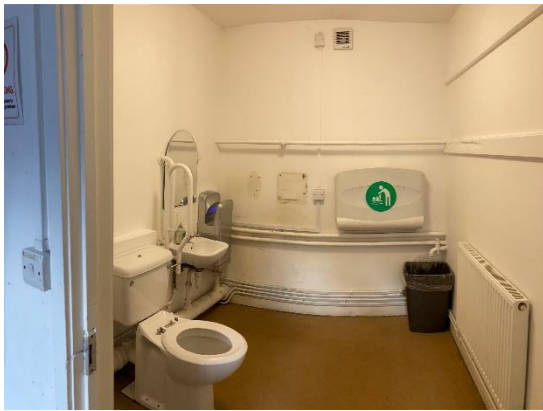
The accessible toilet is located next to The Stables cafe. It is open when the cafe is open. Opening times can vary, please check the Penrose website for details.

There is one accessible toilet and one non-accessible toilet.

- The toilets are accessed via a small ramp from the courtyard into a foyer area with the accessible toilet directly in front. The ramp is 79cm wide.
- The floor is vinyl. There is no lighting in the foyer.
- The accessible toilet door is outward opening & 79cm wide. There is a grab handle on the exterior of the door and a lever handle on the inside.
- The accessible toilet room is 198cm x 220cm wide and lit by automatic compact fluorescent lighting.
- There is a toilet, a wash hand basin at 72cm height with a single push tap, hand pump soap and an automatic hand dryer at 101cm height.
- There are various grab handles; one on the interior of the door, both sides of the toilet (one of which raises and lowers) and one next to the wash hand basin.



Entrance to toilet foyer



Toilet interior



The Stables accessible toilet interior

Food & beverage (The Stables cafe)

- The Stables cafe is a takeaway outlet in the courtyard offering takeaway drinks, cakes and biscuits.
- The main courtyard is a mixture of cobble and gravel and is mainly level.
- The doorway is 104cm wide with one door open and 204cm wide with both open.

- The floor is concrete and there is strip lighting. There is also a large window letting in natural light.
- There is an induction loop installed.
- There are 3 external circular wooden picnic benches located in the courtyard area which provide space for a wheelchair to access the tables.



The Stables courtyard, wooden entry doors and cafe interior.

Walled Garden

- The entrance into the first, lower section of the walled garden runs on a gentle gradient up to and into the second part of the garden.
- The paths are mostly grassed surface which can become muddy in winter or after rainfall.
- There is a small brick, circular dipping pond in the centre of the second section.
- There are some benches but no formal seating. In dry months, visitors are welcome to sit on the grass and picnic.



National Trust

Map

