



Chartwell Group Bookings 2026





“A day away from Chartwell
is a day wasted!”

- Winston Churchill

Contents

About Chartwell	3-4
Group Bookings Process....	5-6
Prices and Private Tours	7-8
Exclusive add-ons.....	9
Terms and Conditions.....	10
Site Map & Back Cover.....	11-12

Thank you for considering a group visit to Chartwell, the family home of Sir Winston Churchill.

We welcome over 400 groups each year—whether it’s your first time or a return trip, there’s always something special to enjoy in the house and gardens. This brochure has all the essentials for planning your visit. If you need anything else, our friendly team are here to help.

Contact us:

Email: chartwell.groupbooking@nationaltrust.org.uk

Phone: 01732 868381



House

Step into the cherished home of Sir Winston Churchill, one of Britain's most iconic leaders. Chartwell was Churchill's family residence for over 40 years, offering a glimpse into his personal life above & beyond politics.

The house is presented as it was in the 1930s, when Churchill spent much of his time here with his beloved wife Clementine and their four children. Each room tells a story, filled with treasures and memories that reflect his legacy.



Gardens

Discover the stunning and extensive hillside garden of Chartwell, crafted by Sir Winston Churchill.

Walk in the footsteps of Britain's most famous Prime Minister by enjoying a stroll through Lady Churchill's Rose Garden, take in the uninterrupted views across the Kentish countryside, and marvel at the Golden Rose Avenue; a family tribute to 50 years of marriage.

Step into history. Experience beauty. Visit Chartwell



Studio

Chartwell's studio is home to the largest single collection of Winston Churchill's paintings. The studio houses Churchill's canvasses, most unframed and in various stages of completion. The studio became a favourite refuge for Churchill.

Due to the small space inside, large groups need to split into smaller groups to visit the studio.



Gardens

The gardens are situated on a hillside which do not lend themselves easily to wheelchair users.

Access to the upper part of the gardens is via the mobility bus vehicle. This section of the gardens includes the croquet lawn, butterfly house, walled kitchen garden, Golden Rose Avenue, and views over both our orchard and the Sussex Weald.

Studio

The Studio has an accessible entrance, but to avoid steps the route to it is across a grass slope or down a steep paved slope.

Shop and Café

The shop and café are accessible from the upper level of the car park where there are additional designated parking bays, or from the ramped area to the left-hand side of the shop area.

There is a lift from the ground floor of the restaurant to our function facility the Mulberry Room where an accessible toilet is also available.

Other facilities onsite are:

- Adapted toilets
- Braille and larger print on room cards
- Manual wheelchairs available on loan
- Volunteer run mobility vehicle

Make a booking

We recommend making a booking at least 3 months in advance.



Please contact our team today with:

- Group name
- Group leader's name
- Estimated Group Size
- Date of Visit
- Arrival Time

Once we have provisionally booked your visit, we will send you an email with booking details to fill in. To confirm the booking please complete and return the email at your earliest convenience. You can do this by emailing us on:

Chartwell.groupbooking@nationaltrust.org.uk

If you would prefer to speak to a member of our booking team, please call us on:

01732 868381

Your booking will not be confirmed until you have completed the booking information, and we have acknowledged this via email.



Timings

To get the best Chartwell experience, we recommend allowing 3–4 hours for your visit.

Attraction	Time
House	1 hour
Gardens	1 hour
Woodland	1 hour
Café and Shop	1 hour

Group Benefits

- Discounted admission for groups of 15 people or more.
- Pre-booked house entry.
- Complimentary admission for the group leader and driver.
- Free Coach Parking.
- Free familiarisation visit for the group leader.

Prices

House, Studio and Garden

Adult: £ 21.60

Child: £ 10.80

Garden, Studio & Exhibition Rm Only

Adult: £ 15.30

Child: £ 7.65

Free for National Trust Members or Royal Oak Members

We offer a reduction of 10% on the admission prices (reduced prices shown above) for groups of 15 people or more. Payment for entrance fees may be made in advance or by cash/card on arrival or invoice if you have a National Trust Account.

Complimentary admission for group leader and driver for groups of 15 people or more.

We welcome one group every 30 minutes at Chartwell, so each group gets a dedicated member of staff to greet them on their arrival. If your proposed time has already been booked, we will offer you an alternative.

Arrival time should be at least 30 minutes before house entry.

Opening Times

Visitor Centre, Garden, Exhibition, Shop and Café

28 February 2026 – 25 October 2026
10am - 5pm (last entry 4.30pm)

26 October 2026 - 26 February 2027
10am - 4pm (last entry at 3.30pm)

House

28 February 2026 – 25 October 2026
11am - 4pm (last entry at 3.40pm)

26 October 2026 – 1 November 2026
11am – 3.30pm (last entry at 3.10pm)

Christmas Hours

27 November 2026 – 3 January 2027
11am – 3.30pm (last entry at 3.10pm)*

*Please note only selected rooms of the house open for our Christmas hours

Studio

28 February 2026 – 25 October 2026
11.30am - 4pm

26 October 2026 – 3 January 2027
10.30am - 3pm

8 February 2027 – 26 February 2027
10.30am - 3pm

Chartwell is closed on the 24 and 25 December

On Bank Holidays and Kent School Holidays, please be advised that we may reduce the number of groups on site .

Important:

Admission fees are based on pre-confirmed numbers unless updated at least 24 hours in advance (Weekday) or 48 hours in advance (Weekends) Adjustments help us release or secure house tickets to avoid disappointment



Private Tours

Step into history with a private morning tour of Chartwell, the home of Sir Winston Churchill before it opens to the public.

***Classic Private Tour - £350**

(up to 7 Guests)

A Personal journey through the house with one of our knowledgeable volunteer guides. One-hour guided experience starting at 9.45am, tailored for small groups seeking something truly special.

Head Gardener Tour - £275 per group

(up to 10 people)

Join our Head Gardener for an exclusive tour to learn more about the history of the garden at Chartwell and hear about the skill of the team who curate and care for this inspirational space. Planning something unique or bringing a larger group? We'd be delighted to help craft a bespoke experience just for you.

Contact us today

To reserve your private tour and unlock the stories behind the walls of Chartwell

Exclusive add-ons



Mulberry Room

Make your visit unforgettable with a private, volunteer-led talk exclusively for your group. Relax with a cup of tea or freshly brewed coffee as our passionate speakers share captivating stories, insider insights, and behind-the-scenes details you won't hear anywhere else.

Talk for up to 50 people for £285

Enjoy optional catering packages in our Mulberry Room. Contact us for menus and pricing.

Garden Tours

Volunteer-Led Garden Tour

Enjoy a 45-minute stroll through the beautiful grounds with one of our knowledgeable volunteers.

- £9 per person
- Minimum group size: 15 people



Art Studio Talk

Uncover the artistic side of one Britain's greatest leaders and learn how painting became Churchill's sanctuary and source of joy.

Listen to a fascinating talk on Churchill's art, anecdotes and insights into the inspirations that fuelled his creativity.

- £9 per person
- Minimum group size: 15 people

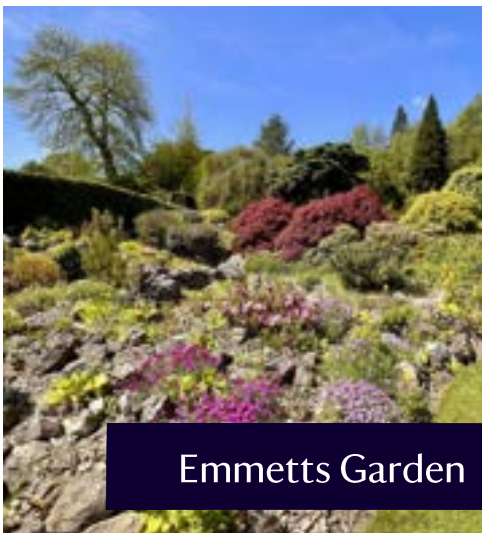
Terms and Conditions

- Please note we will confirm your booking via email once we have all your information. If any changes are to be made, please contact us at least two weeks prior to your booking.
- To be eligible for our discounted group rate your group must be 15 people or more in size and you will need to pay us in one transaction. Any free passes which the National Trust are promoting at the time of your visit cannot be used as part of our discounted group offer.
- Final visitor numbers must be confirmed no later than 7 working days before your visit. Once we have received these, that is the number of tickets which must be paid for on the day as we will not be able to resell them.
- Please be advised entry to the house cannot be guaranteed if a group misses their agreed entry time
- Groups are responsible for managing their own journey time and delays.
- We do not issue licenses for private tour guides inside the pay barrier at Chartwell. Guides are welcome to escort their groups but once on site we ask that you do not carrying out any guiding / talks. For more information ask for a copy of policy.

Cancellation

Please note that should you chose to cancel your group booking we require a minimum of 7 working days' notice. If you cancel at any point after this time, an administration fee of £50 will be invoiced to you.

Where next?



Emmetts Garden

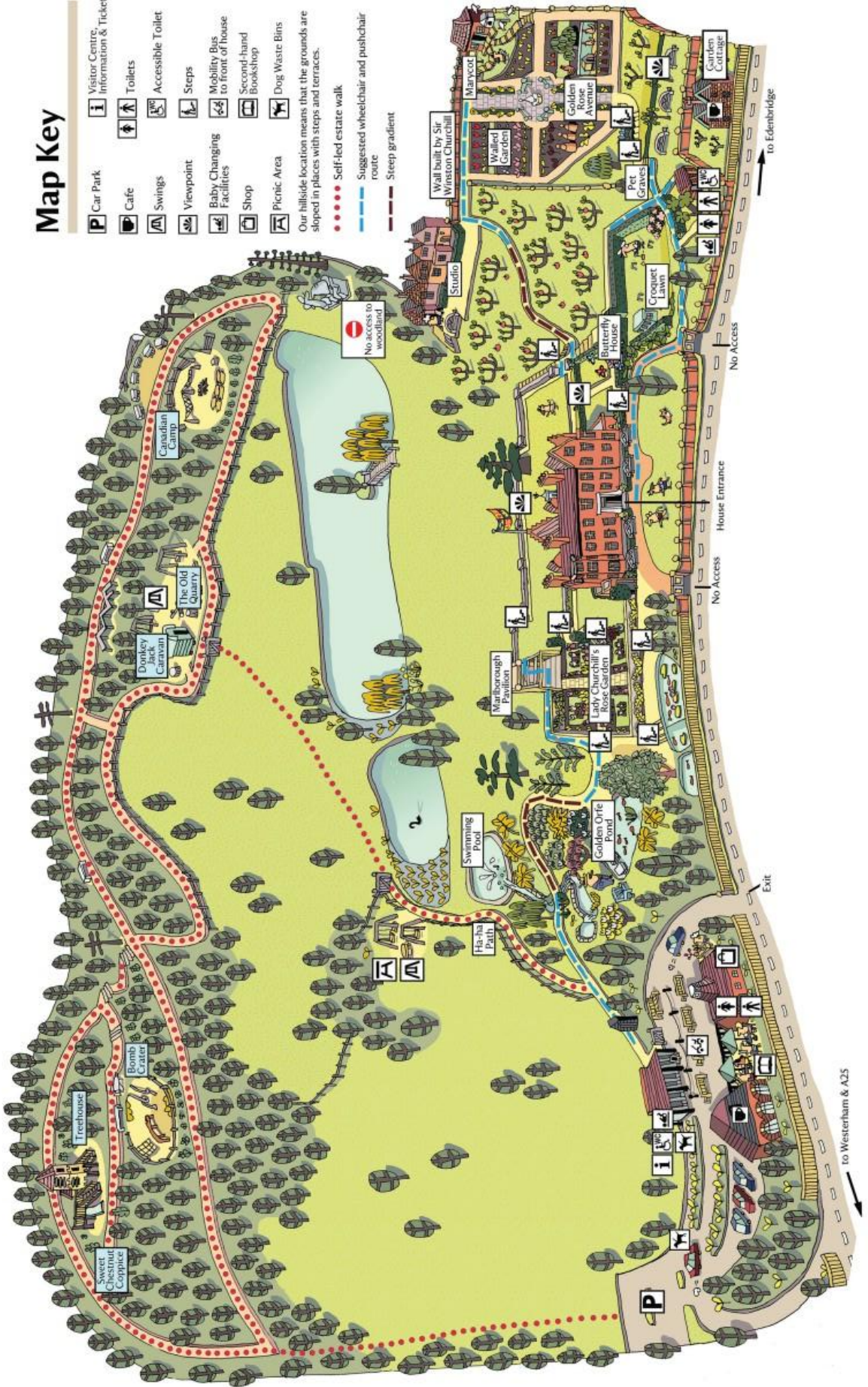


Quebec House

Site Map

Map Key

- P** Car Park
 - i** Visitor Centre, Information & Tickets
 - C** Cafe
 - A** Swings
 - V** Viewpoint
 - B** Baby Changing Facilities
 - S** Shop
 - PA** Picnic Area
 - T** Toilets
 - AT** Accessible Toilet
 - S** Steps
 - M** Mobility Bus to front of house
 - SB** Second-hand Bookshop
 - D** Dog Waste Bins
 - W** Wall built by Sir Winston Churchill
 - WG** Walked Garden
 - GR** Golden Rose Avenue
 - PG** Pet Graves
 - CL** Croquet Lawn
 - GC** Garden Cottage
 - MC** Marycot
 - ST** Studio
 - WP** Warborough Pavilion
 - LC** Lady Churchill's Rose Garden
 - OP** Golden Orfe Pond
 - SP** Swimming Pool
 - HP** Hi-ha Path
 - TC** Treehouse
 - BC** Bomb Crater
 - OC** The Old Quarry
 - DC** Donkey Cart
 - CC** Cavalry Camp
- Our hillside location means that the grounds are sloped in places with steps and terraces.
- Self-led estate walk
 - Suggested wheelchair and pushchair route
 - - -** Steep gradient





Front and back cover image

©National Trust Images Ian Shaw/Christopher Lane

Main images

©National Trust Images/ Christopher Lane/ Kate York /
James Dobson / Nick Outtridge / Arnhel de Serra / Andrew
Butler / Paula Ratcliffe

©National Trust 2026

The National Trust is a registered charity no. 205846

nationaltrust.org.uk