

Ennerdale Access Statement

Bleach Green car park Grid ref: NY085 153 (not National Trust)

Bowness Knott car park Grid ref: NY109 153 (not National Trust)

Flat Fell car park Grid ref: NY042 137 (not National Trust)

T: 017687 74649 (North Lakes office in Keswick, during office hours)

E: northlakes@nationaltrust.org.uk

W: www.nationaltrust.org.uk/ennerdale and www.wildennerdale.co.uk



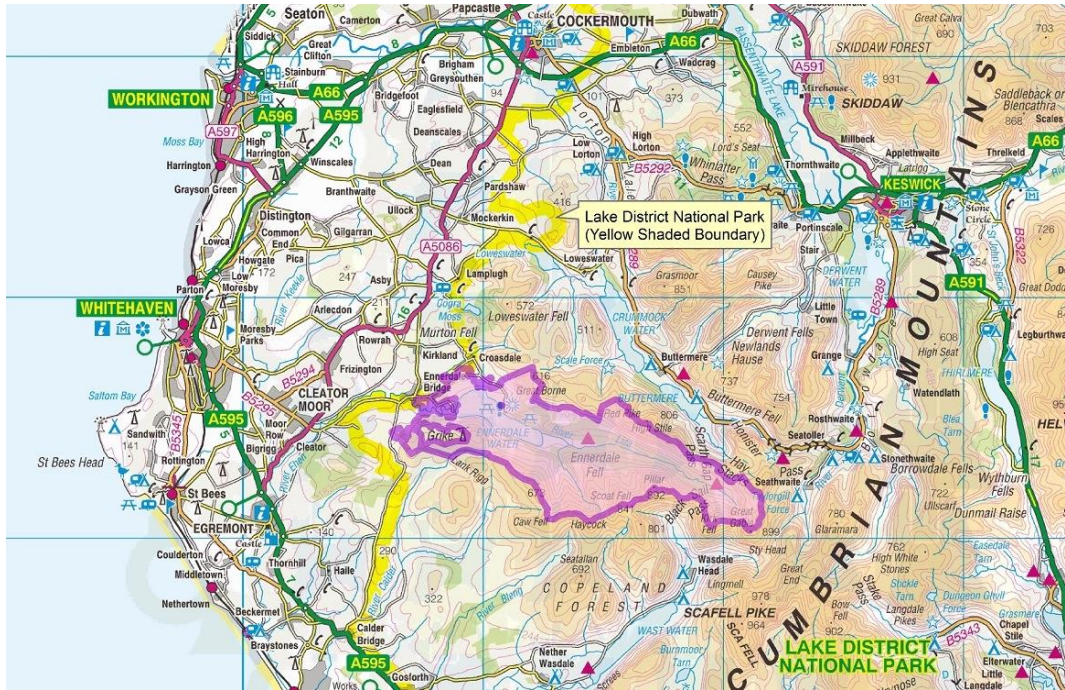
Introduction

Lying on the north western edge of the Lake District National Park, Ennerdale is home to some of England's most vibrant natural environments and one of the longest running wild land restoration projects in the UK. Wild Ennerdale is a management partnership covering approximately 10872 acres; the property is made up of several parts with a secluded valley and the National Trust owned commons of Kinniside accounting for 5013 acres and Longmoor, 27 acres. Landscapes vary from tenanted farms to lowland bogs, forest, lake and upland heaths. The valley has a no through road which is for access only. It does not have

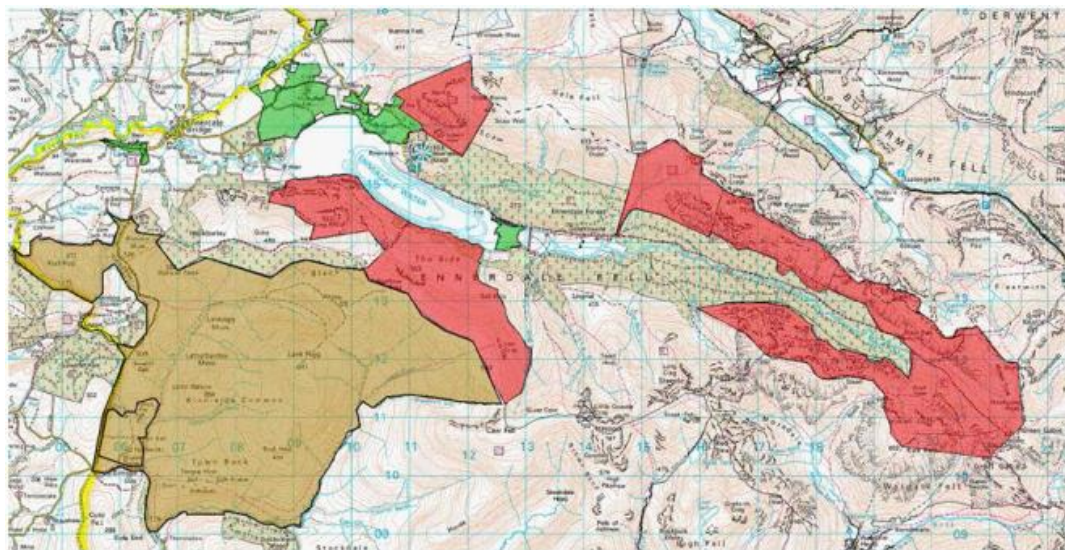
access by a main A road and mostly serves the local community, although the coast to coast path passes through with an estimated 15000 walkers per year.

Mobile reception is generally poor to non-existent except when you have a line of sight to the urban areas along the coast. In an emergency contact 999 or 112, ask for the mountain rescue service, (coastguard for the lake). Whitehaven and Ennerdale Ranger Chris Gomersall can be contacted on 07785 22 66 98

Location



This map shows the 'Wild Ennerdale' area in the context of the Lake District National Park. It is taken from the Wild Ennerdale Stewardship plan.



This map shows the National Trust owned land within the Ennerdale property. It is taken from the Visitor Safety Risk Assessment with colour coding to show:

Green = rural, Brown = rugged, Red = Wild

Arrival & Parking Facilities

Ennerdale Valley Vehicle Access

Public vehicular access ends at Bowness Knott car park. Vehicle access east of Bowness Knott is limited to those living and working in the valley and visitors staying overnight at YHA Ennerdale and Low Gillerthwaite Field Centre.

The village of Ennerdale Bridge is the main access point into this area by car. There are two main car parks serving the valley; Bleach Green and Bowness Knott, and one small one, Flat Fell, serving Kinniside common. In the village you can find the Gather, a cafe/visitor centre with maps, toilets and information.



Information in the Gather café in Ennerdale Bridge.

For **Bleach Green car park**, follow signs for Ennerdale Bridge; once in the village and at the school, turn towards the valley. Turn right before the first large block of woodland at the 'Wild Ennerdale' signpost. Follow this road to its end and cross the river. The car park itself has approximately 30 unmarked spaces and a visitor welcome sign with a map showing walking routes.

For **Bowness Knott car park** follow the road from Ennerdale Bridge or Croasdale towards the valley, it is winding and single track road in places. When you reach the woodland and cross a cattle grid you have arrived. Turn left into the car park under the trees. There is space for approx. 30 cars, here you will find a visitor welcome information panel with a map.

For **Flat fell car park** access is from Wath Brow, Cleator Moor with a turn off the A5086 onto an unnamed road past the Hornets rugby club and over the river Ehen. After the bridge take

the second right turning steeply uphill on a winding and single track road, at the end the car park is on the right with space for 7 or 8 cars.

There are an additional 7 informal parking places along the Cold Fell road on Kinniside which can accommodate one or two cars. Take care as these are unpaved and beside the carriage way.

On foot

There are many access points if arriving on foot. Wainwright's 'coast to coast' long distance route is very popular and runs through each of the 3 National Trust areas detailed above.

- Path surfaces vary in quality and type.
- The Ennerdale Views path is a circular all ability route from Bleach Green car park.
- A 6 mile forestry track follows the valley floor with connecting tracks which are popular routes for walkers and cyclists
- The Smithy Beck trail and Round the Lake walk offer popular circular routes.
- There is a circular route on Flat Fell (Kinniside)
- From the West the sites are accessed from Dent via the challenging 'coast to coast' route, approximately 309km (192 miles) long. From Nannycatch Gate you enter into the Lake District National Park and from there it is a gentle climb onto Kinniside before descending to Longmoor, then rising slowly along the length of the valley, however Anglers crag is a short steep scramble part way along the lake.

Bicycle

There is no bus or train services to the area. Route 71 of the Sustrans bike network, known as the 'C2C' route, passes close by. There are several exit points to access Ennerdale from. Assuming you are cycling West to East, for **Flat Fell** come off at Cleator Moor and turn right onto Ennerdale Road towards the A5086, use instructions as above for parking. For **Bleach Green** you can follow for Flat Fell but continue onto Ennerdale Bridge village or carry on route 71 until the village of Kirkland. At the cross roads turn right to Ennerdale Bridge village, then follow directions detailed for parking. For **Bowness Knott**, when you reach a T junction beyond the village of Kirkland turn right and this road leads down to Croasdale, take a left turn at the next T junction to head into the valley or right to the village of Ennerdale Bridge.

Mobile reception is generally poor or non-existent except when you have a line of sight to the urban areas along the coast.

In an emergency contact 999 or 112, ask for the mountain rescue service, (coastguard for the lake). Whitehaven and Ennerdale Ranger Chris Gomersall can be contacted on 07785 22 66 98.

Dogs are welcome but should be kept under control throughout this area as this is a farmed landscape with livestock present even in the woods and forest.

This area is not staffed but there may be rangers, volunteers, tenants, graziers or a project officer working on site at any given time.



Refreshments are available at the Gather, a non-National Trust café/visitor centre and two pubs in Ennerdale Bridge village, where there are toilets.

Trails

There is one waymarked trail at present, the Smithy Beck trail. Map panels in the car parks at Bleach Green and Bowness Knott car parks show several walking routes in the valley and can be downloaded from here <http://www.wildennerdale.co.uk>

The Smithy Beck trail

Start the trail from Bowness Knott car park or use the lakeshore path from Bleach Green car park. It is a 2 mile walk and takes about 45 minutes to complete at a moderate pace.

The walk starts from the base of the slope down from the car park, follows the forestry track along the lake before climbing steeply up into the woods. The path then undulates with a rocky path through the trees to a couple of stream crossings, the second of which has a lovely waterfall. Before you reach the waterfall there is a turn downhill to the right, this is the way back and returns you to the lake and forest track.

Further information about trails around the property is available on our main website. <http://www.nationaltrust.org.uk/ennerdale> or www.wildennerdale.co.uk

Contact details for more information

T: 017684 74649

E: northlakes@nationaltrust.org.uk

Date March 2019

Map

