

Fell Foot Access Statement

Fell Foot, Newby Bridge, Ulverston, Cumbria, LA12 8NN
T: 015395 31273 E: fellfoot@nationaltrust.org.uk

Introduction

- The property is situated on a hillside leading down to the lakeshore of Windermere. There are a number of inclined, gravelled paths. Some routes around the park do contain steps and are not suitable for wheelchairs or prams. If you require vehicular access to the lakeshore, please ask a member of staff for the gate code and we will give you access to the Active Base car parking area. For blue badge holders, the disabled parking bays are available for use.
- Assistance dogs are welcome throughout the property including all buildings.
- We have two **all-terrain wheelchairs available**. One is a manual push all terrain wheelchair with no power assistance and the other is an electric assist push all terrain wheelchair, which enables the pusher to tackle steeper terrain. Both wheelchairs are free of charge. Acquire on arrival with a member of staff in the main north car park.
- We have a **Changing Places facility** in the boatshed next to the Boathouse Café. It requires a radar key to access. Please ask in the café if you need to borrow a radar key.
- Mobile reception around the park is reasonable for most major networks – visitors should contact the emergency services directly in an emergency and then report to a member of staff for assistance.
- As this is a predominantly outdoors property, visitors should be aware that some areas are subject to flooding and may be inaccessible during wet weather. Terrain is uneven in parts and extra care should be taken.
- The site sits on the edge of Lake Windermere and has a number of access points into the Lake itself. The Lake is relatively shallow but water levels can vary during periods of wet weather.
- A new sports facility, the Active Base, is open for a small charge to the North of the site, with its own parking, toilets and changing facilities.

Arrival & Parking Facilities

- The site is easily accessible from a number of major road networks. Brown signs can be found on the A590 from Kendal and Ulverston and on the A592 from Bowness.
- There are two designated disabled spaces in the Kitchen Garden car park, six in the Meadow car park and a further two at the Active Base car park. The kitchen garden and meadow car parks are some distance from the Boathouse café and icecream parlour. Where necessary, vehicular access to this area can be arranged. Visitors are advised to speak to a member of staff located in the kitchen garden car park on arrival.
- The disabled parking bays in the Kitchen Garden car park are straight ahead and, on your right, as you enter. They are located to the right of the car park machine and welcome hut.
- The Meadow car park has three disabled bays available to the right and left of the car park machine. They are highlighted with signposts at the rear of each parking bay.

- The Active Base disabled bays are located on your right as you enter the Active Base car park. They are marked in yellow on the tarmac.
- The car parks are a mixture of gravel and tarmac with the designated spaces being predominantly gravel.
- There is no transfer vehicle available to transport persons from the car park therefore visitors are advised to speak to a member of staff on arrival.
- It is possible for visitors to drop persons off at the Active Base car park should all the designated spaces be unavailable.
- There is signage showing that speed bumps are present and the speed limit at the entrance to the property.
- There are eight speed bumps and one one-way exit bump on the property. See below for ID, location and height.

Kitchen Garden car park entrance



Kitchen Garden car park disabled bays



Meadow car park entrance



Meadow car park disabled bays



Active Base car park entrance



Active Base disabled bays



Speed bump ID	Location	Height (mm)
1	Entrance before white office	30
2	Visitor information building	40
3	Adjacent staff car park	39
4	Before kitchen garden car park	42
5	Atkinson court gate (upper)	33
6	Atkinson court gate (lower)	31
7	Adjacent pinetum	45
8	South car park entrance	41
9	Exit trap	67

WCs (Toilets)

- There are accessible WCs in the Kitchen Garden car park and at the Active Base. For access to the Active Base accessible toilet, please ask a member of staff in the Active Base office or café for a free key fob to open the door.
- We also have a Changing Place adjacent to the Boathouse Café. Please refer to page 7 for full details.
- For information on the accessible WC in the Active Base, please refer to page 9 of this document.
- The accessible WC in the Kitchen Garden car park has an automatic hand drier, terracotta tiled floor and white tiled wall surfaces with an electric manual switch lightbulb. It has a right-hand transfer accessible WC with space to turn a wheelchair through 1000mm diameter circle.
- The male and female WCs in the Kitchen Garden car park have automatic hand driers, lino floors and part tiled wall surfaces, with electric bulb lights. They have 7 steps up to both.
- The female toilets adjacent to the Boathouse Café have automatic hand driers, lino floors and part tiled wall surfaces, with spotlights. The entrance to the female toilets have a step at the threshold. The steps up to each of the female toilet doors are 200mm high.
- The male toilets near the Boathouse Café are located inside the Boat shed. Access is step free to the male toilet block and they contain 2 cubicles and 2 urinals. There are automatic hand driers, lino floors and painted wall surfaces with spotlights.
- There are baby changing facilities available in both the female toilets (adjacent to the Boathouse Café) and the male toilets (inside the Boat shed).



Visitor reception and information points

- We have a visitor welcome hut to the right of the car parking machine in the kitchen garden car park. There is a ramp leading up to the doorway of the visitor welcome hut. This is not permanently manned. There is a steady declining pathway into the park from this area.
- This building is 8x8ft and can accommodate a standard wheelchair. There is seating within it for 2 visitors with armed and un-armed chairs. The walls are wooden and painted cream inside with a wooden floor.



- We have a cottage building for site enquiries in the site office (marked in blue on the map attached). Via car, the stone cottage is located on your right as you descend the hill towards the Active Base facilities. If you park in the Active Base car park, access to the site enquiries office is via the road towards the Active Base. Once you have parked, there is a steep incline uphill from the Active Base car park.
- Access into the site office is via an ascending paved pathway.
- The flooring inside the site office area is laminated and flat.
- There is a hearing loop available upon request from the staff.

Entrance to site office



Paved pathway to site office



Café facilities

- The Boathouse Café has a cobbled surface to the entrance and has level access apart from a small raised lip of less than 10mm across the doorway.
- There is an alternative cobblefree and step free entrance through the Boatshed entrance to the right of the café.
- Each doorway to the café is over 1000mm wide. This doorway is non-power assisted and can open to 90 degrees. The door opens inwards. Catering team members can assist if required.
- There is some outdoor seating with picnic tables which can accommodate wheelchair users.
- There is a decked viewing platform located to the front of the Boathouse Café. There are 2 steps for access via the cobbled courtyard. However, there is step free access through the café via the glass double doors to the far end of the café.



Picnic tables with access for wheelchairs.

- The counter with the till is 750mm high. Catering team members are available to assist with service and carrying trays.
- The width between the tables is approximately 1200mm.
- There is an induction loop in the café at the till.
- If queueing is difficult please ask our catering staff for assistance and we can provide service direct to your table.
- Menus are in large writing on the blackboards throughout the café.
- Straws are available upon request.
- The floor surface is large flagstones and the walls wooden clad, there are some spotlights and large lamps hanging from the ceiling for lighting within the Boathouse Café. There is a mixture of chairs with and without armrests available. Most chairs are upright and soft. There are 5 comfy sofas and 3 armchairs available.

Entrance to the Boathouse Café



Boathouse Café interior and counter



Ice Cream Parlour

- The icecream parlour is in a smaller, detached stone boathouse. The entrance has a stone ramp with a moderate gradient. The floor is large flagstones and there are spotlights throughout.
- The doorway is over 1000mm in width; the doors open outwards to at least 90 degrees and are non-power operated. There is a second set of glass doors within the boathouse space which open inwards and open to at least 90 degrees.
- The counter is just over 800mm high, but staff and volunteers are able to assist with service by carrying goods if required.
- There is an induction loop at the till point.
- The access internally is a large open space, but there are large wooden pillars supporting the historical building's structural integrity.

Ramp access to the Ice cream Parlour



Interior of the Ice cream Parlour



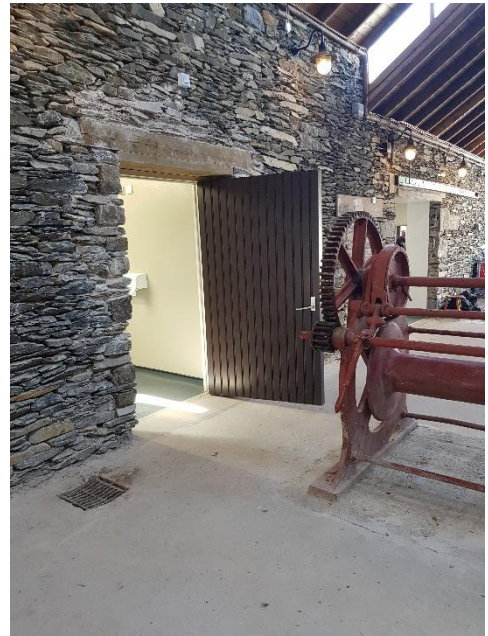


Changing Place

- The Changing Place facility is located in the Boat shed adjacent to the Boathouse Café.
- Guidance of how to use the Changing Place equipment is provided in snap frames on the wall.
- Access to the area is step-free but it does include some gradients on the pathways. The pathways are a mixture of gravel and tarmac surfaces. Access can also be gained through the café to the Boat shed area.
- The doorway to the changing places facility is located to your left as you enter the Boat shed from the main entrance. If you enter the Boat shed via the café entrance the Changing Place is located to your right. It requires a radar key to access. Please ask in the café if you need to borrow a radar key. The doorway is over 1000mm wide with a large handle which pushes down to open the door. The door opens outwards. To lock the door, push up the handle 90 degrees.

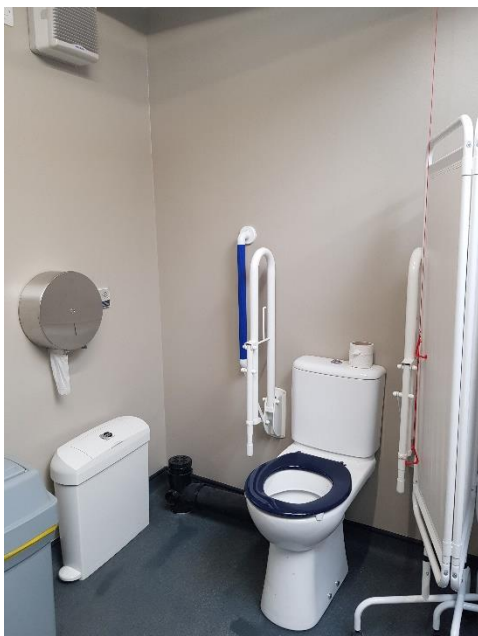
**Access to the Boat shed
(moderate gradient towards the doorway)**

Doorway to the Changing Place



- The Changing Place contains a hoist for users who need this equipment to assist with their day-to-day care. Straps must be provided by the users.
- There is over 1200mm of turning space for wheelchair users within the Changing Place area.
- There is a peninsular toilet with grab rails on both sides.
- There is also an adjustable, accessible sink with knee space below the basin which sits 720mm off the floor.

Toilet inside the Changing Places



Toilet and washbasin positioning



- There is a hoist and changing bench available. The bench can be levered up or down depending on your needs. There is also a screen provided which can be moved around the changing place as you see fit.
- There is an emergency pull cord with a red cable which can be used if you require further assistance.
- Check our guidance on pages 14-15 on how to use all the equipment within the Changing Place facility.

Changing bench, screen and peninsular toilet layout within the Changing Place



Active Base

- Please be aware that the Active Base is a pay for entry facility, and all doors are locked. However, please see note below about accessing the accessible toilet which can be accessed if you request a free key fob from a staff member.

Car Park and access to the Active Base

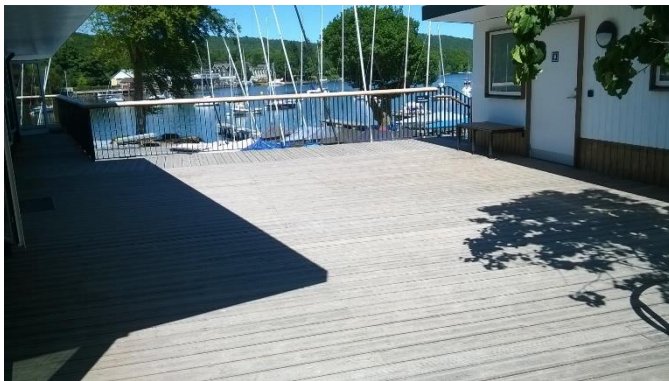
- There is a separate car park here with 2 disabled bays available. The Active Base has two footpaths. One leads from the car park down a tarmac ramp with a slight decline to the wooden decking. Or there is a slightly inclined path with a fine gravelled surface from the main parkland/ café side of the property.

Gravel path leading to the Active Base



- Around the Active base there is a wooden decked balcony area. All floors of the Active Base are one level, with no lip around any door frames.

Decking at the Active Base



- There are male and female changing rooms available in this area. All external doors to the changing rooms are over 1000mm wide and open outwards. None are power assisted and have no windows.
- The male changing rooms have urinals and toilet cubicles, secure locker space and an open changing area with wall hooks and wooden benches.
- The female changing rooms have 3 cubicles, secure locker space and a changing area with wall hooks and wooden benches. The floors are tiled with gripped rough surfaces and all walls are tiled.
- There are baby changing facilities available in all the changing rooms.
- There is an accessible toilet, with a left-hand transfer accessible WC with space to turn a wheelchair through 1500mm diameter circle. It also includes a space to change and a right-hand transfer accessible shower. The walls are tiled and the floor is also tiled with gripped rough surfaces.
- **Please ask a member of staff for a free key fob to the accessible toilet.**

Disabled toilet facilities in the Active Base



Clubhouse Lobby

- The Clubhouse external doorway is over 1000mm wide. This doorway is non-power assisted and can open to 90 degrees. The door opens outwards.
- The floor surface is carpeted.
- Once you enter the lobby the Clubhouse has a large Clubroom to the right and a welcome office to the left.

Clubroom

- The Clubroom doorway is over 1000mm in width. This doorway is non-power assisted and opens outwards. This doorway is a fire door.
- There is an infrared Induction Loop in the main clubhouse. Ask a member of staff for assistance.
- The floor surface is wooden and the walls wooden clad, there are lamps hanging from the ceiling.
- Table height is over 800mm high.

Active Base Office

- Once you enter the office, there is a two-tier counter which is accessible for wheelchair users. The lower tier is 720mm high and the higher tier is 1100mm high.
- There is a hearing loop available for use in this area if required. Simply request one from a member of staff when in the Active Base office.
- The doorway is over 1000mm in width. This doorway is non-power assisted and opens inwards. This doorway is a fire door.
- The floor surface is wooden and the walls wooden clad, there are lamps hanging from the ceiling for lighting.

Clubhouse Kitchen

- The Clubhouse kitchen doorway is over 1000mm in width. This doorway is non-power assisted and opens outwards. This doorway is a fire door.
- The Clubhouse kitchen counter is approximately 900mm high.

Parkland

- The park is set on a hillside with a series of pathways and steps (average step height no greater than 150mm, average step depth 800mm), leading to the different areas. We have a main grassy lawn with 2 large areas of flowered meadows, a Pinetum area, the Lost Villa Lawn, a lakeshore promenade, formal play area and another wildflower meadow at the south of the park. These are served by a network of paths which are largely gravelled and vary in incline. There are some steps leading from the Lost Villa lawn and to the

café area – these do have handrails, but alternate routes without steps are available.

- There is a map available which shows the various routes around the park including a key of gradient severity. Visitors are advised to speak to a member of staff on arrival for alternative routes if needed.
- There are a number of benches and seats located at intervals around the park.

Steps leading up to the Lost Villa Lawn from the paddock and arboretum



Alternative step free route from paddock to Lost Villa Lawn



Steps leading down to café from kitchen garden carpark



Alternative step free route from kitchen garden carpark to café



Adventure Playground

- The entrance to the adventure playground is open with no fencing.
- The adventure playground has woodchip surfacing.
- We currently have a range of equipment within the adventure playground for a variety of users with different abilities. This includes a basket swing, the Titan swing with a range of seating options and the rota-rokka. All of which can be accessed through lifting the user into the seating available. There is also a wooden climbing frame and swings and equipment for younger children.

Adventure playground equipment



South Meadow

- The South Meadow is situated to the very south of the property.
- There is a gateway through to the meadow which can be opened for access to the right, however the larger gate to the left can also be opened for access.
- The pathway is grass with several inclines and declines as you travel around the outer loop of the meadow area. Refer to images below.
- There are two benches available as resting places near to the lakeshore on the meadow pathway.

Gateway as you exit the meadow



One of the declines on the meadow path



One of the benches in the meadow



Cut grass for pathway in the meadow



Contact details for more information

T: 015395 31273

E: fellfoot@nationaltrust.org.uk

Updated June 2022

Our property map is available for viewing on the last page.

Changing Place written guidance is on the following 2 pages:

Guidance for use of the Changing Places Toilet

1. This facility is designed to support parent/carers of disabled people who require the use of a hoist, changing bench and/or centrally located toilet.
2. For health and safety reasons the users sling that is compatible with the loop system must be used. It is the carer's responsibility to satisfy themselves regarding compatibility. We do not provide slings for health and safety reasons.

3. Before using the changing bench please ensure that a protective paper sheet is placed on the bench and removed after use.
4. All soiled/disposable material should be placed in the sanitary bins provided.
5. Please take all soiled clothing away and under no circumstances should clothing be washed on the premises, as this will cause contamination.
6. It is the carer's responsibility to ensure the safety of the user at all times including use of the hoist and under no circumstances should the weight limit of the equipment be exceeded. For the hoist the maximum weight is 200kg and for the changing bench maximum weight is 160kg.
7. In order to ensure the high quality of this service, please report any damage or hygiene issues to a member of staff.

Please note the hoist is not for independent use.

Guidance for use of the Changing Places equipment

Hoist

Hand Held Control

The hand held control is used to

- Move the hoist up or down
- Move the cassette along the rail

Do not use the hand-held control as a towing line – stand behind the caretaker and steadily push them along the rail.

Emergency Cord

By pulling the emergency cord the hoist will immediately stop moving.

The emergency stop is de-activated as follows:

Press the red lip to which the cord is attached back into the cassette.
After this the cassette will function as normal.

Changing table

The changing table can be adjusted using the hydraulic foot pedals.

The left pedal will raise the bed height; depress the right pedal to lower the bed.

The side rails can be raised and lowered by pulling the red release button and lifting the rails simultaneously.

