

Rainham Hall Access Statement

Rainham Hall
The Broadway
Rainham
London Borough of Havering
RM13 9YN
T: 01708 525579
E: rainhamhall@nationaltrust.org.uk



Introduction

1. Rainham Hall is a Grade II* listed Georgian house, with outbuildings and a nearly three acre garden. Rainham Hall is a small property situated in an urban area.
2. Mobile phone reception is good in emergency situations. Visitors should alert staff or volunteers should they encounter a problem whilst at the property.
3. Assistance dogs are welcome to the property.
4. Due to the number of steps and gradient of the entrances to Rainham Hall, ramp access is not possible meaning there is no level access for wheelchair users. However the Brewhouse, Gardens and venue hire space are accessible for wheelchair users. Please note there is no car park at the Hall, but nearby options are available (see Arrival & Parking Facilities below). Visitors and members are required to come to the front door of the Hall to show membership cards, purchase tickets and obtain information about their visit. If visiting only the garden, visitors and members are required to first come to the Wennington Road gate in the garden to show membership cards, purchase tickets and obtain information about their visit. Our staff and volunteers would be happy to help with requests for additional support.
5. Inside the house there are large print copies of the text panels available. There is not an audio guide for the exhibition, but staff and volunteers are happy to assist.

Due to the current government restrictions to aid social distancing due to the Coronavirus, opening times and routes may differ for various parts of the property. Face masks are required to be worn in indoor areas. Hand sanitising stations will be available around the site.

Arrival and parking facilities

1. Rainham Hall is located in the heart of Rainham village. Lamp post banners act as directional signage. There are no brown signs as there is no car park and stopping outside the property is not advised due to traffic and parking restriction. The Hall is situated on a busy London street that is also a bus route.



View from the road. Entrance to the Hall through the front door of the main house on the left.



*Entrance to the garden through the Wennington Road gate at the back of the garden.
There are 5 steps from the Wennington Road entrance with a handrail.*

2. There are 3 car parks in Rainham that are within close distance of the Hall. There is a car park at Rainham train station located 0.1 miles away (C2C Services), the large Tesco store in Rainham has a large car park with accessible spaces offering 3 hours free parking to their customers, and adjacent to Tesco is a Council run pay and display car park. Both these car parking options are 0.2 miles away. 3. We do not have a transfer vehicle.

WCs

When the Hall is open there is access to WCs.

1. An accessible toilet can be found in the main visitor toilets located adjacent to the Stableblock.
2. The accessible WC is 2.3m x 1.6m and has a right hand transfer.
3. Please note we do not have a Changing Places facility.
4. The area is lit on sensors, without use of fluorescent bulbs.
5. We do not have hand dryers, but paper towels are available.

House

1. The House is no more than 30m from the Stableblock.
2. A cobbled courtyard connects the House to the outbuildings including the Brewhouse. There are also herringbone paths at the back of the property leading to the garden.



Herringbone path across the lawn.

3. There are several level changes and steps leading up to the House at the front and back entrance. There is a level change from the pavement, 4 steps to the front porch and a further step inside the front entrance. There is an internal level change at the back exit, with one step down to a porch area and another 2 steps down to ground level.



Steps at the front door.



Steps at the back door, inside and outside.

4. Due to the number of steps and gradient of the entrances to the Hall ramp access is not possible meaning there is no level access for wheelchair users.
5. The entrance door is manually operated by staff and volunteers. It is 107cm wide.
6. Rainham Hall is not a furnished property, so there are some rooms without soft furnishings. 14 exhibition rooms are open to the public, featuring objects on display, photographs and projections on walls, and a room of scented plaster fruits. In some rooms there are audio clips of more information – on the ground floor, there is music in the entrance hall and a phone rings periodically, and on the second floor, an audio voiceover clip is triggered by a switch on the wall.
7. Many of the shutters are open allowing for natural light, with additional LED lighting.
8. The ground, first and, where possible, the second floors are open to the public. The ground to first floor is accessible via a staircase only with two flights. This is the original staircase constructed in 1729 with a mahogany balustrade as a handrail. Fragile eighteenth century wall paintings are featured on either side of the staircase.

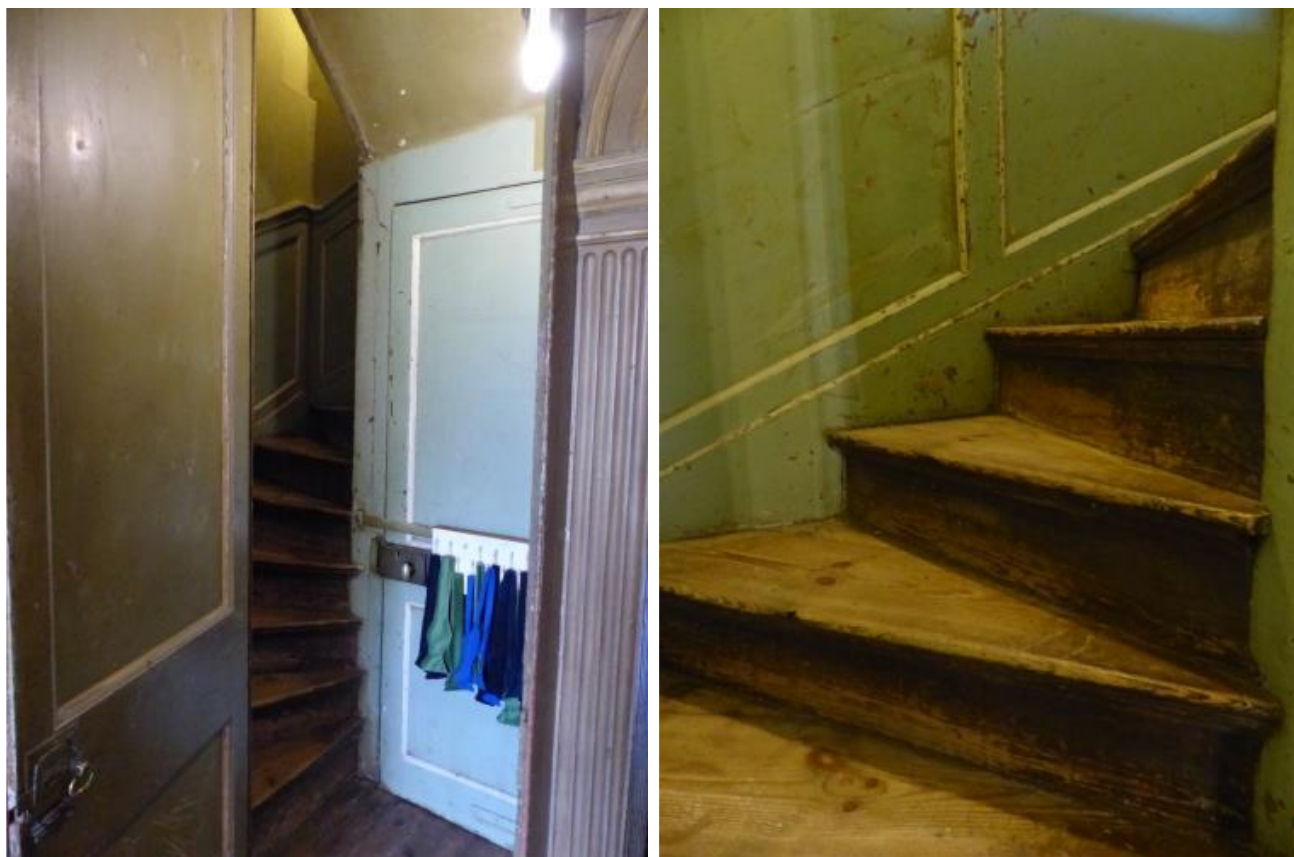


The staircase with balustrade.



The wooden steps are quite shallow, but worn and uneven.

The staircase is wide and there are chairs for visitors to use located in the room on the first left. Where possible, the second floor staircase will be opened. The staircase from the first to second floor is a small, winding staircase much like a servants or back stairs for the property. There is no handrail on the left hand side, until you turn up towards the second floor. The capacity of this floor is limited for fire regulations (only 15 at any one time).



The stairs from the first to the second floor. The steps are narrow and the space itself is tight. There is only a handrail after the final turn.



9. Rainham Hall is a small, Georgian property with narrow corridors and doorways. where possible, the second floor staircase will be opened. Please note interconnecting doors are

less than 75cm and the staircase from first to second floor is also under 75cm. The internal door just before the main exit on the ground floor is 174cm tall.

11. We do not have volunteers stationed in every room, but there will typically be one per floor. Team members on duty can call for assistance via radios if additional support is required.

12. The main visitor toilets are adjacent to the Stableblock where there is one accessible toilet. Ask staff or volunteers for assistance.

13. A team member will give you an introduction to the property when you arrive.

14. There are plenty of quieter areas where visitors can rest.

15. The fire alarm is sound only. Volunteers and staff will begin an evacuation procedure should the alarm sound.

Garden

1. The gardens are small at nearly 3 acres with excellent sight lines. The gardens are split in two levels, with access to both of these via sloping paths. Areas of the gardens are zoned with an orchard, meandering borders, woodland area and outdoor seating.





Paths in the garden include formal paved stone paths, herringbone and partially cobbled paths, and informal mulch, soil, and grass paths.

2. For visitors with mobility issues there is a path through the gardens without using steps this is via the sloping path beside the outdoor seating area. It connects directly with level access at the Wennington Road entrance.
3. The Wennington Road entrance leads to a stone surface, then on to a mulch path. Other paths in the garden consist of self-binding gravel.
4. The garden path slopes are on a gradient of 1:12, with the exception of a steep pathway from the top orchard to the woodland.



To the right of the central garden staircase is a step free sloping path.



The woodland trail has a step free route.

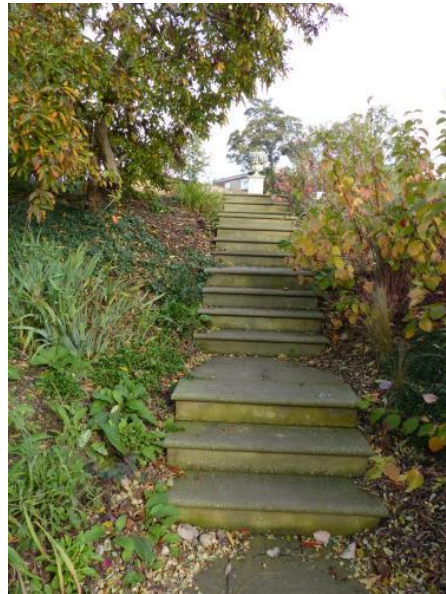


The meandering borders are a step free winding path connecting the lower lawn and outdoor seating area at the back of the Stableblock.

5. There are 2 sets of steps in the gardens. There is a short, stone staircase leading from the Wennington gate entrance down to the lower lawn. A long set of steps connects the orchard area with lower lawn – please note a sloping path through the meandering borders is located very close nearby and is a step free route.
6. The Wennington Road staircase does have a handrail. The central garden staircase does not.



There are 5 steps from the Wennington Road entrance with handrail.



There are 14 steps connecting the upper and lower lawn with no handrail.

7. There are gates around the garden route but these will be open during visiting hours. All gates are wide allowing for easy access. The gate between the upper lawn (next to the Victorian dog kennels) and the outdoor seating area is just over 1m wide. Our staff and volunteers can advise on alternative routes if this is too narrow for any visitors.
8. There is bench seating in the garden.



Stone benches and outdoor seating tables.

9. Please note we do not have any water features.

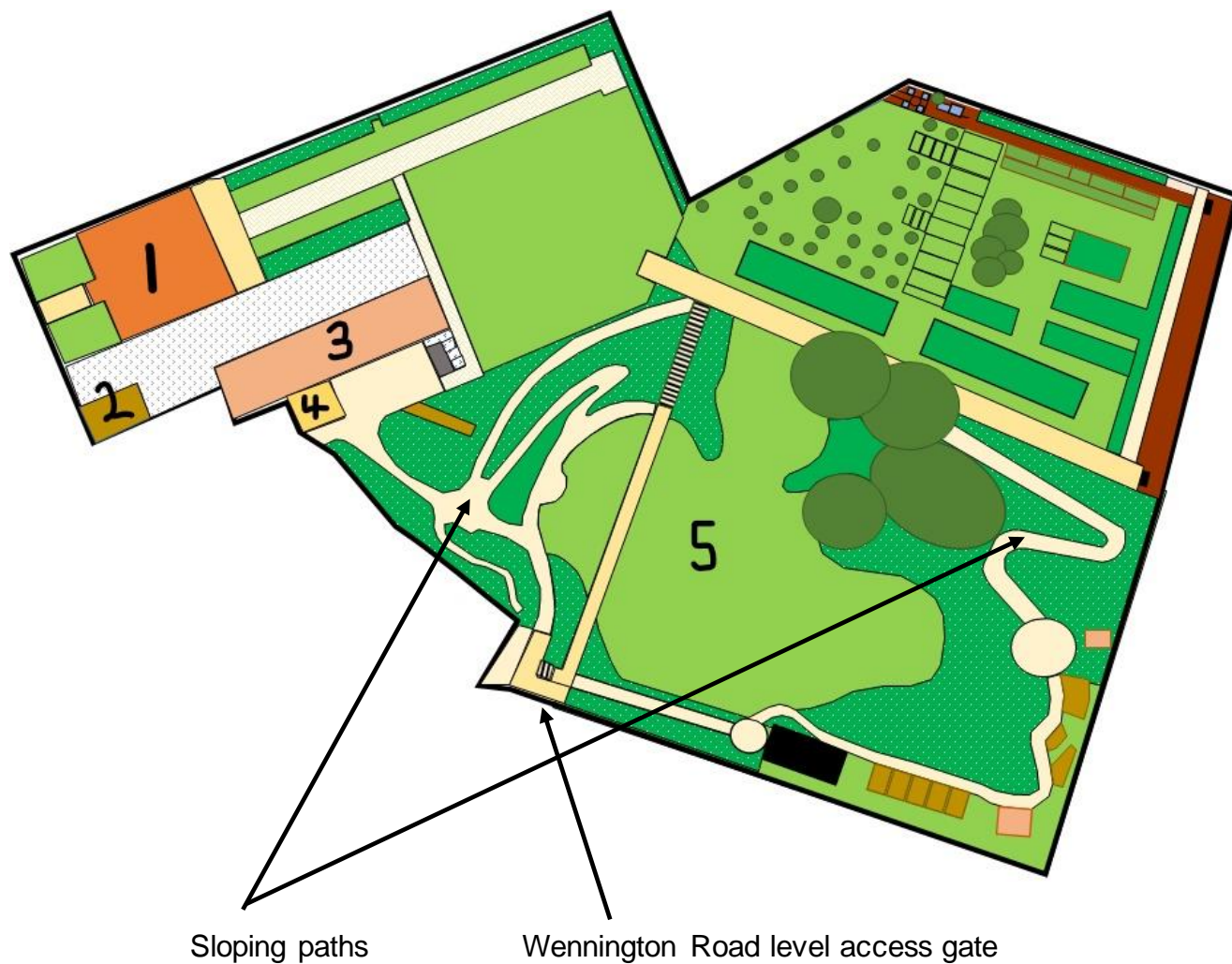
Contact details for more information

T: 01708 525579

E: Rainhamhall@nationaltrust.org.uk

8 April 2021

Map



Sloping paths

Wennington Road level access gate

- 1) Rainham Hall
- 2) Coach House
- 3) Stableblock
- 4) Toilets
- 5) Gardens