

Outdoor property Access Statement – Northumberland Coast

7a The Square, Low Newton-by-the-Sea, Alnwick, Northumberland NE66 3EL

T: 01665 576874

E: northumberlandcoast@nationaltrust.org.uk

Introduction

The properties are at several locations across the Northumberland coast as well as inland, and include Druridge Bay, Alnmouth, Beadnell dunes, Beadnell lime kilns, St Aiden's dunes, Craster – Long Nanny, Lindisfarne, St Cuthberts Cave and Ros Hill.

Beadnell dunes

All footpaths in the dunes are desire lines rather than official footpaths, with the footpaths running behind the dunes and five paths running straight through kissing gates and a stile to the beach. The ground is sandy underfoot throughout and stock may be grazing here.

St Aiden's dunes

A surfaced footpath runs along the seafront at the southern end of the property. One official footpath in the dunes leads from the main road straight through to the beach. Other footpaths in the dunes are desire lines, with the footpaths running behind the dunes and paths running straight through kissing gates and a stile to the beach. The ground is sandy underfoot throughout and stock may be grazing here.

Craster – Beadnell

Craster – Dunstanburgh: There is a wide grassy track running through the field to the castle, accessible through several kissing gates along the route. Stock may be grazing here. There is also a footpath through a kissing gate opposite the Council car park in Craster.

Dunstanburgh – Low Newton: there is a small footpath running from the castle to the golf course, where the ground is flat and grassy. There are multiple desire lines through the dunes between the castle and Low Newton bird hides but please be aware that there is a golf course here. There is a gravel topped footpath between Low Newton bird hides and the village of Low Newton which is wheelchair accessible.

Low Newton – Long Nanny: there is wide grassy track running around the point, where there may be stock in the fields. From Newton Point to High Newton car park the ground is sandy underfoot and undulates steeply in places. Between the Council Car Park at High Newton there is a flat grassy footpath for around 1km at the back of Newton Links, where stock may be grazing. The footpath then veers towards the sea, becoming sandy and steeper in places and ending at the Long Nanny burn with a small footbridge.

Long Nanny - Beadnell: There is a bridge here for which Northumberland County Council are responsible, it has three steep steps at either end. There is a sandy, relatively flat footpath to Beadnell along the back of the dunes to Beadnell caravan park. There is a summer route along the inside of the fence line from the beach when the shorebird site is being used by breeding birds which is roped off and relatively flat but is not wheelchair accessible.

Lindisfarne

Access is by foot along a wide track with gravel topping from Holy Island village. Access to the castle is along a steep cobbled track. The public footpath here runs through open fields in which stock may be grazing.

St Cuthberts Cave

Access is via a walk along a relatively steep unsurfaced track from the car park at Holborn Grange Farm.

Ros Hill

Access to viewpoint is via two paths: one a steep, narrow footpath through heather and bracken to the top, formed by a desire line, the other path is less steep and leads to the north of the summit before reaching the top..

Druridge Bay

A tarmac road runs along the back of the dunes. There are some sandy footpaths through the dunes to the beach via kissing gates and openings in the fence. A gravel surfaced track leads from the road to the Northumberland Wildlife Trust bird hides (not on NT land).

Buston Links, Alnmouth

A gravel track, generally accessible on foot, leads into the site. Access to dunes only via sandy footpaths.

Beadnell lime kilns

Access to top of kilns prevented by wooden barriers.

Dogs are welcome at all these locations aside from the Long Nanny during the bird breeding season. Dogs must be kept on a lead at Newton Point during the bird breeding season, and would ideally be kept on a lead at all locations due to the possibility of grazing livestock in the autumn, winter and early spring and breeding ground nesting birds in summer, particularly at the coastal locations.

NB - Mobile phone reception is not very good across the sites. In an emergency, please make contact on the phone number above as soon as you are able.

Arrival & Parking Facilities

Beadnell dunes

No designated parking – access from Beadnell along footpath near road or along beach. Public toilets at car park at NU 23515 28793 not National Trust.

St Aiden's dunes

Car park at Seahouses at NU 21830 32017 belongs to council. Public toilets at Seahouses at NU 21911 32095 not National Trust

Craster – Long Nanny

Parking at Craster (council car park at NU 25614 19853). Parking at Low Newton (council car park at NU 23976 24792) or High Newton (council car park at NU 23549 26043). No public toilets at these locations

Lindisfarne

Council car park on Holy Island at NU 12614 42422. Toilets in Holy Island village.

St Cuthberts Cave

Small parking area at Holborn Grange Farm NU 05113 35146 (not National Trust). No toilets.

Ros Hill

No designated parking or toilets.

Druridge Bay

No designated parking or toilets.

Alnmouth

No designated parking or toilets.

Beadnell lime kilns

Access from council car park at NU 23486 28772. Public toilets at car park at NU 23515 28793 not National Trust.

Trails

The majority of sites are heather moorland or sand dune and therefore do not allow wheelchair access

Craster – Long Nanny

Way marker posts from Low Newton indicate Newton Pool hide and there are also seasonal posts around the Long Nanny to direct visitors away from the breeding birds to the viewing area to indicate the direction of the routes. The easiest route to access for wheelchair users is from Low Newton to the hide. Access to beach from Low Newton village.

Lindisfarne



Access along track to castle from Holy Island village.

Further information about walks at Northumberland coast is available on our main website.
<http://www.nationaltrust.org.uk/embleton-and-newton-links>

Date: September 2016



Alnmouth Access Map



Legend

- ▲ Definitive Properties (GB)
- NT Ownership (GB)
- NT Leasehold (GB)

1: 13,000



0.5 0 0.26 0.5 Kilometers

British_National_Grid

© Crown copyright and database rights 2016 Ordnance Survey 100023974

This map is a user generated static output from an Intranet mapping site and is for reference only. Data layers that appear on this map may or may not be accurate, current, or otherwise reliable.

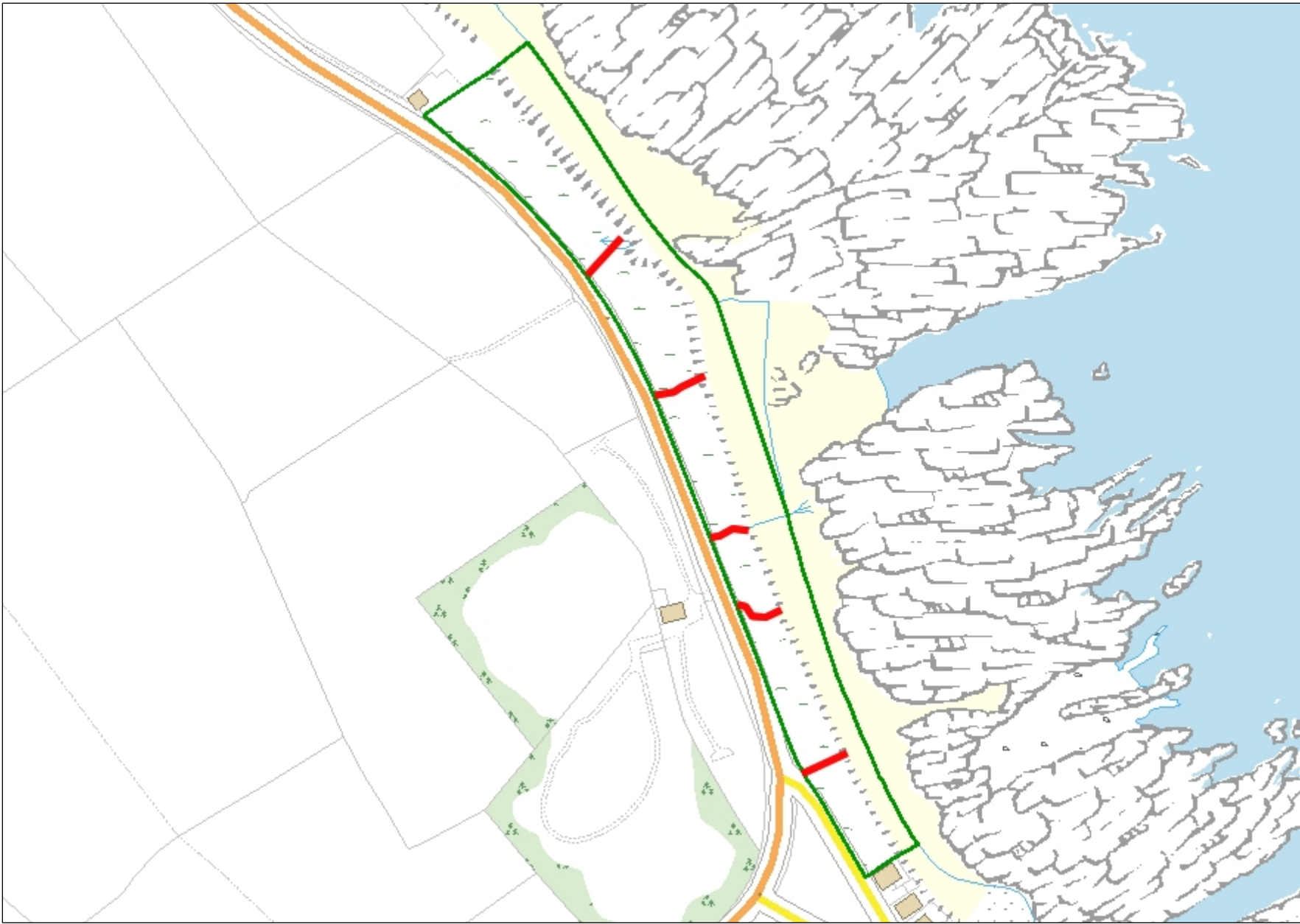
THIS MAP IS NOT TO BE USED FOR NAVIGATION

Notes

This map was automatically generated using the National Trust GIS Browser



Beadnell Access Map



Legend

- ▲ Definitive Properties (GB)
- NT Ownership (GB)
- NT Leasehold (GB)

1: 4,000

0.2 0 0.08 0.2 Kilometers

British_National_Grid
© Crown copyright and database rights 2016 Ordnance Survey 100023974

This map is a user generated static output from an Intranet mapping site and is for reference only. Data layers that appear on this map may or may not be accurate, current, or otherwise reliable.

THIS MAP IS NOT TO BE USED FOR NAVIGATION

Notes

This map was automatically generated using the National Trust GIS Browser



Druridge access map



Legend

- ▲ Definitive Properties (GB)
- NT Ownership (GB)
- NT Leasehold (GB)

1: 10,000



0.4 0 0.20 0.4 Kilometers

British_National_Grid

© Crown copyright and database rights 2016 Ordnance Survey 100023974

This map is a user generated static output from an Intranet mapping site and is for reference only. Data layers that appear on this map may or may not be accurate, current, or otherwise reliable.

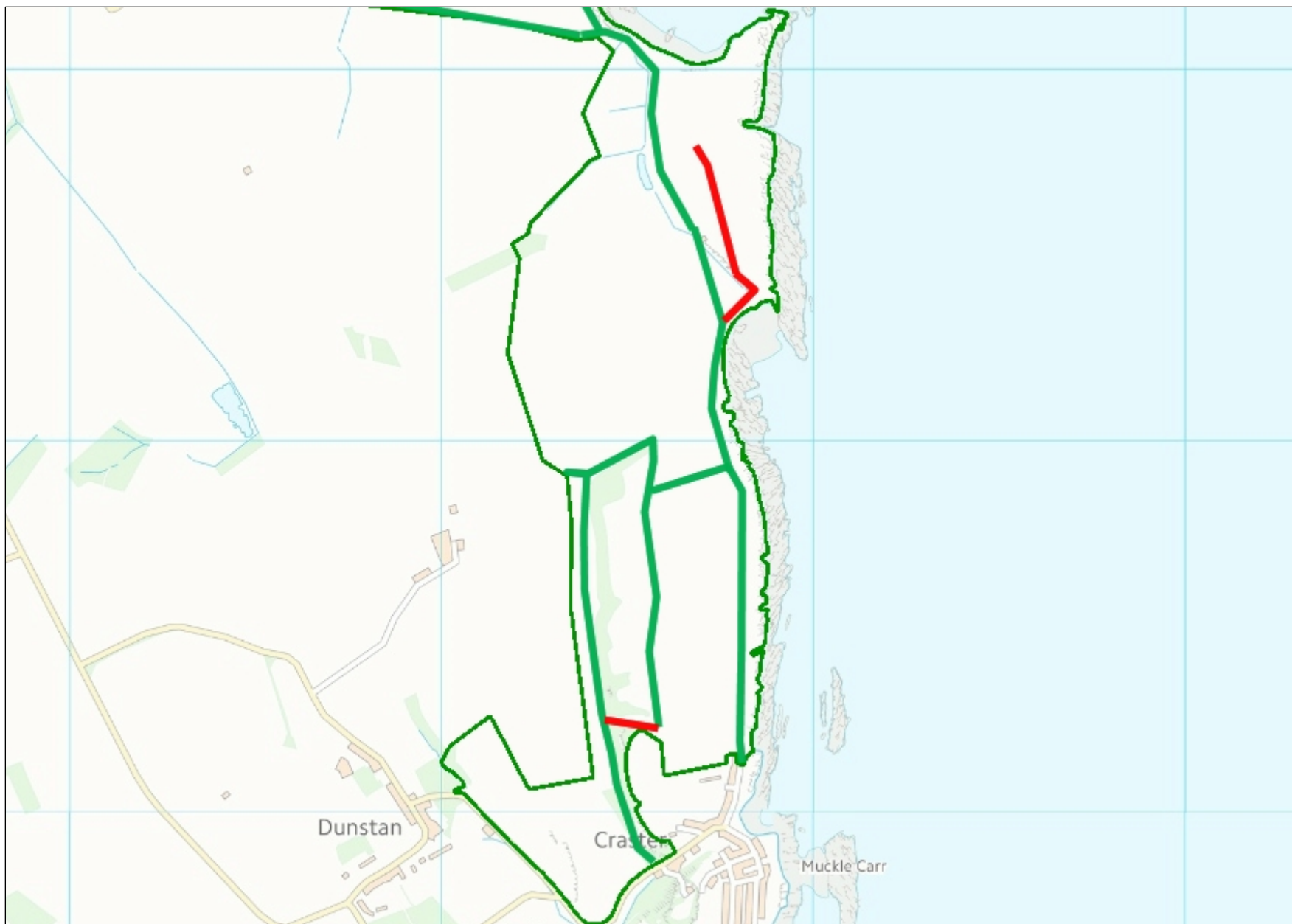
THIS MAP IS NOT TO BE USED FOR NAVIGATION

Notes

This map was automatically generated using the National Trust GIS Browser



Dunstanburgh Access Map



Legend

- ▲ Definitive Properties (GB)
- NT Ownership (GB)
- NT Leasehold (GB)

1: 15,000



0.6 0 0.30 0.6 Kilometers

British_National_Grid

© Crown copyright and database rights 2016 Ordnance Survey 100023974

This map is a user generated static output from an Intranet mapping site and is for reference only. Data layers that appear on this map may or may not be accurate, current, or otherwise reliable.

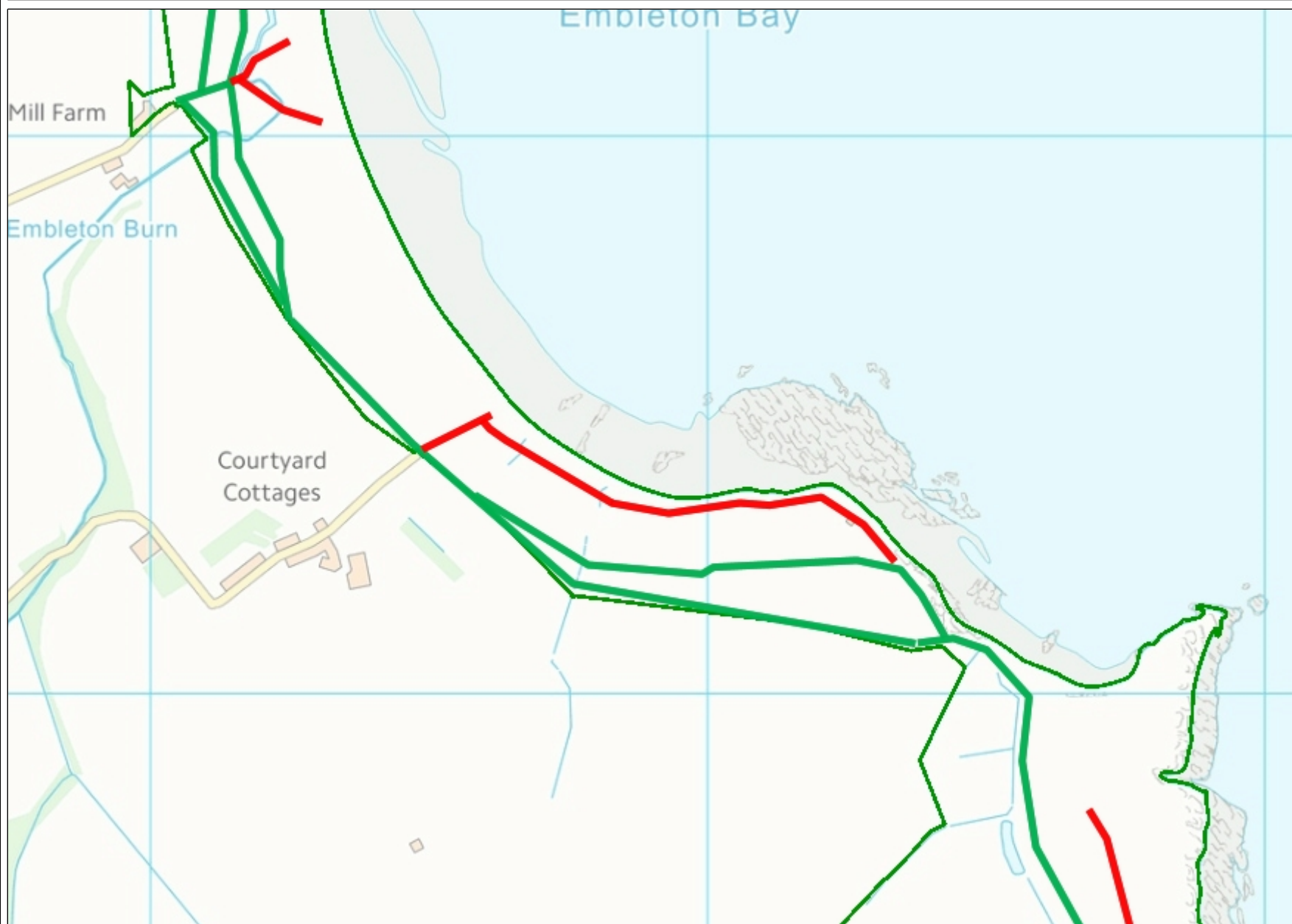
THIS MAP IS NOT TO BE USED FOR NAVIGATION

Notes

This map was automatically generated using the National Trust GIS Browser



Golf Course and Dunstanburgh Castle Access Map



Legend

- ▲ Definitive Properties (GB)
- NT Ownership (GB)
- NT Leasehold (GB)

1: 10,000



0.4 0 0.20 0.4 Kilometers

British_National_Grid

© Crown copyright and database rights 2016 Ordnance Survey 100023974

This map is a user generated static output from an Intranet mapping site and is for reference only. Data layers that appear on this map may or may not be accurate, current, or otherwise reliable.

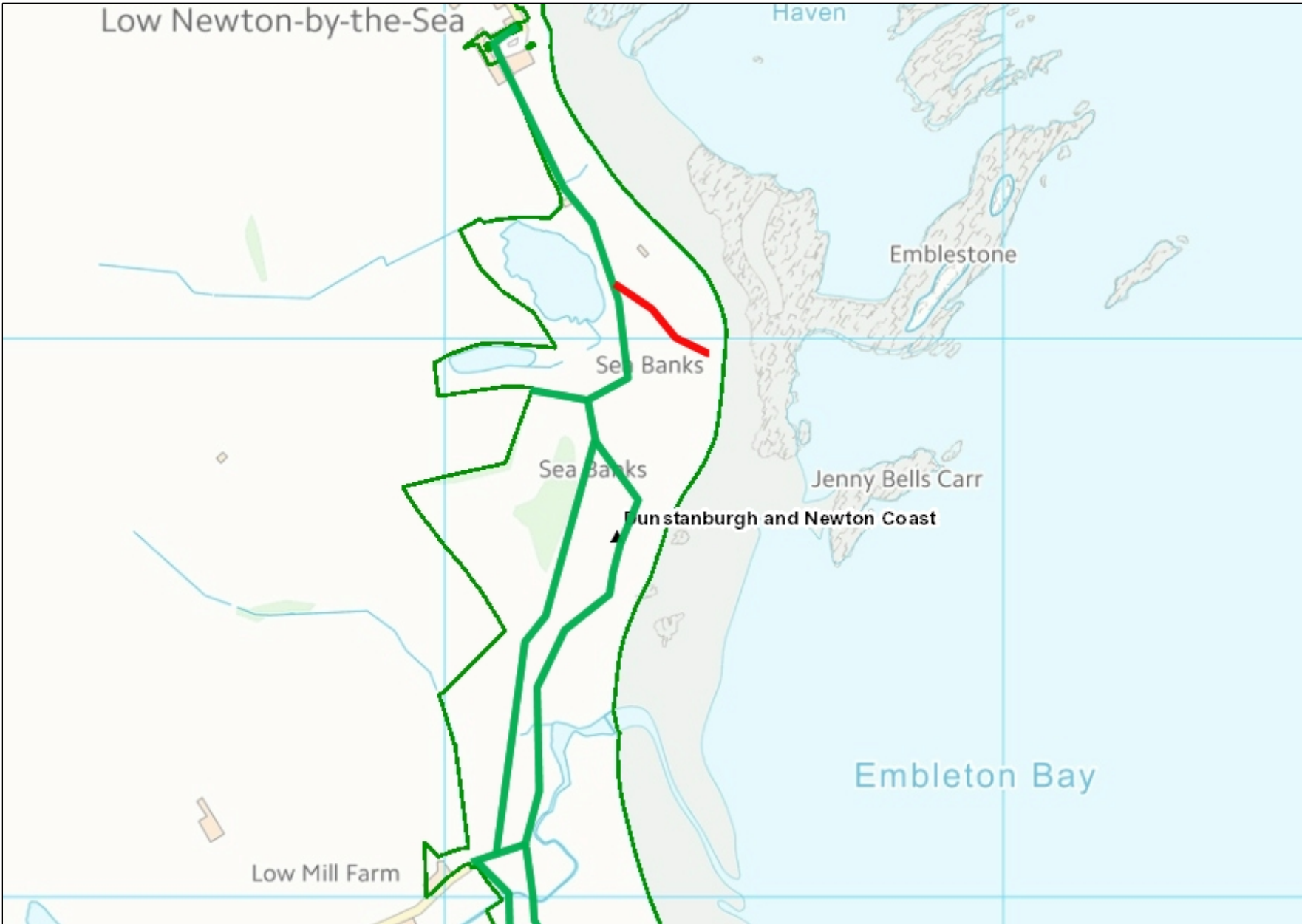
THIS MAP IS NOT TO BE USED FOR NAVIGATION

Notes

This map was automatically generated using the National Trust GIS Browser



Embleton Links Access Map



Legend

- ▲ Definitive Properties (GB)
- NT Ownership (GB)
- NT Leasehold (GB)

1: 10,000



0.4 0 0.20 0.4 Kilometers

British_National_Grid
© Crown copyright and database rights 2016 Ordnance Survey 100023974

This map is a user generated static output from an Intranet mapping site and is for reference only. Data layers that appear on this map may or may not be accurate, current, or otherwise reliable.

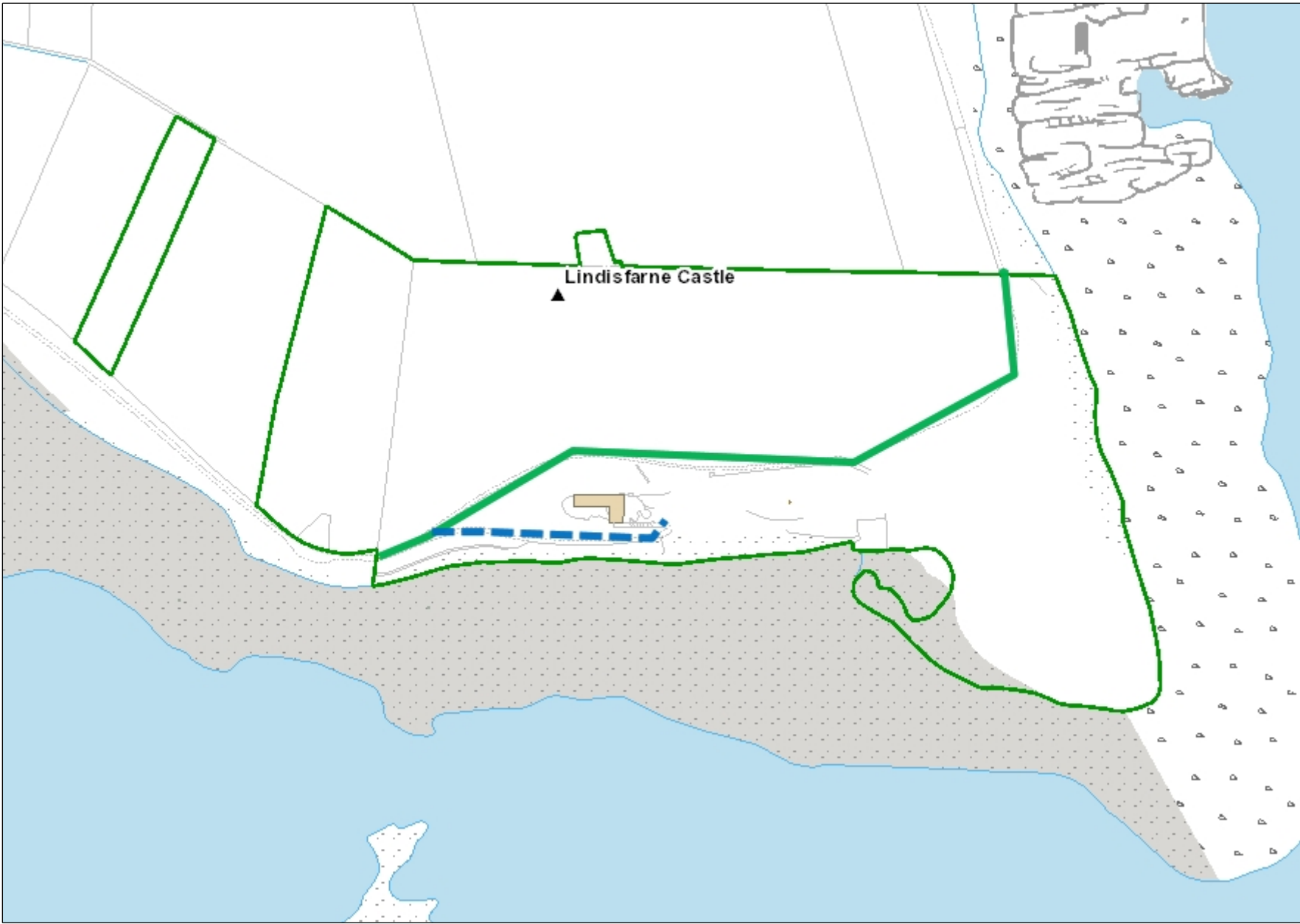
THIS MAP IS NOT TO BE USED FOR NAVIGATION

Notes

This map was automatically generated using the National Trust GIS Browser



Lindisfarne Access Map



Legend

- ▲ Definitive Properties (GB)
- NT Ownership (GB)
- NT Leasehold (GB)

1: 4,000



0.2 0 0.08 0.2 Kilometers

British_National_Grid
© Crown copyright and database rights 2016 Ordnance Survey 100023974

This map is a user generated static output from an Intranet mapping site and is for reference only. Data layers that appear on this map may or may not be accurate, current, or otherwise reliable.

THIS MAP IS NOT TO BE USED FOR NAVIGATION

Notes

This map was automatically generated using the National Trust GIS Browser



Newton Links Access Map



Legend

- ▲ Definitive Properties (GB)
- NT Ownership (GB)
- NT Leasehold (GB)

1: 7,000



0.3 0 0.14 0.3 Kilometers

British_National_Grid

© Crown copyright and database rights 2016 Ordnance Survey 100023974

This map is a user generated static output from an Intranet mapping site and is for reference only. Data layers that appear on this map may or may not be accurate, current, or otherwise reliable.

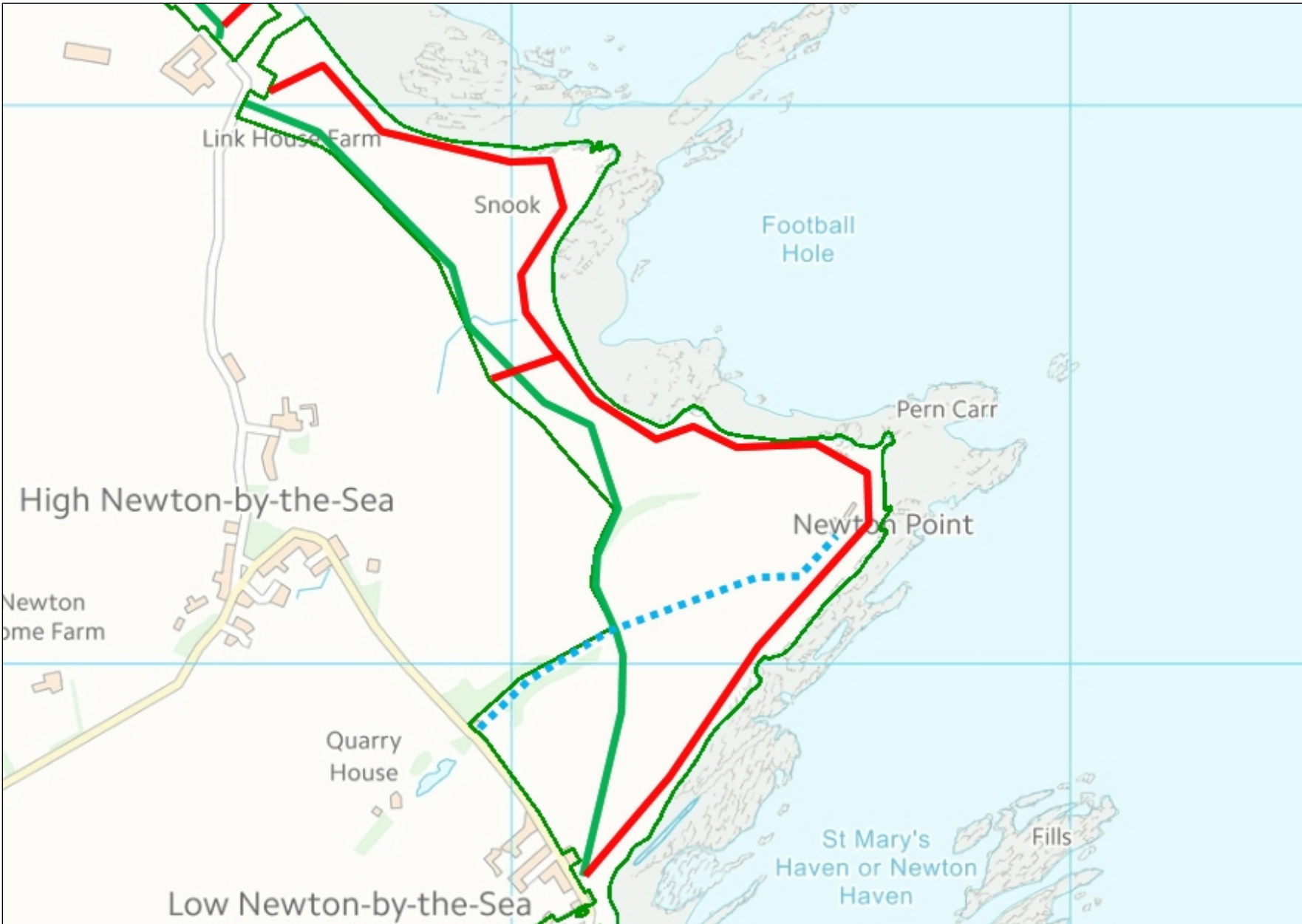
THIS MAP IS NOT TO BE USED FOR NAVIGATION

Notes

This map was automatically generated using the National Trust GIS Browser



Newton Point Access Map



- Legend
- ▲ Definitive Properties (GB)
 - NT Ownership (GB)
 - NT Leasehold (GB)

1: 10,000



0.4 0 0.20 0.4 Kilometers

British_National_Grid
© Crown copyright and database rights 2016 Ordnance Survey 100023974

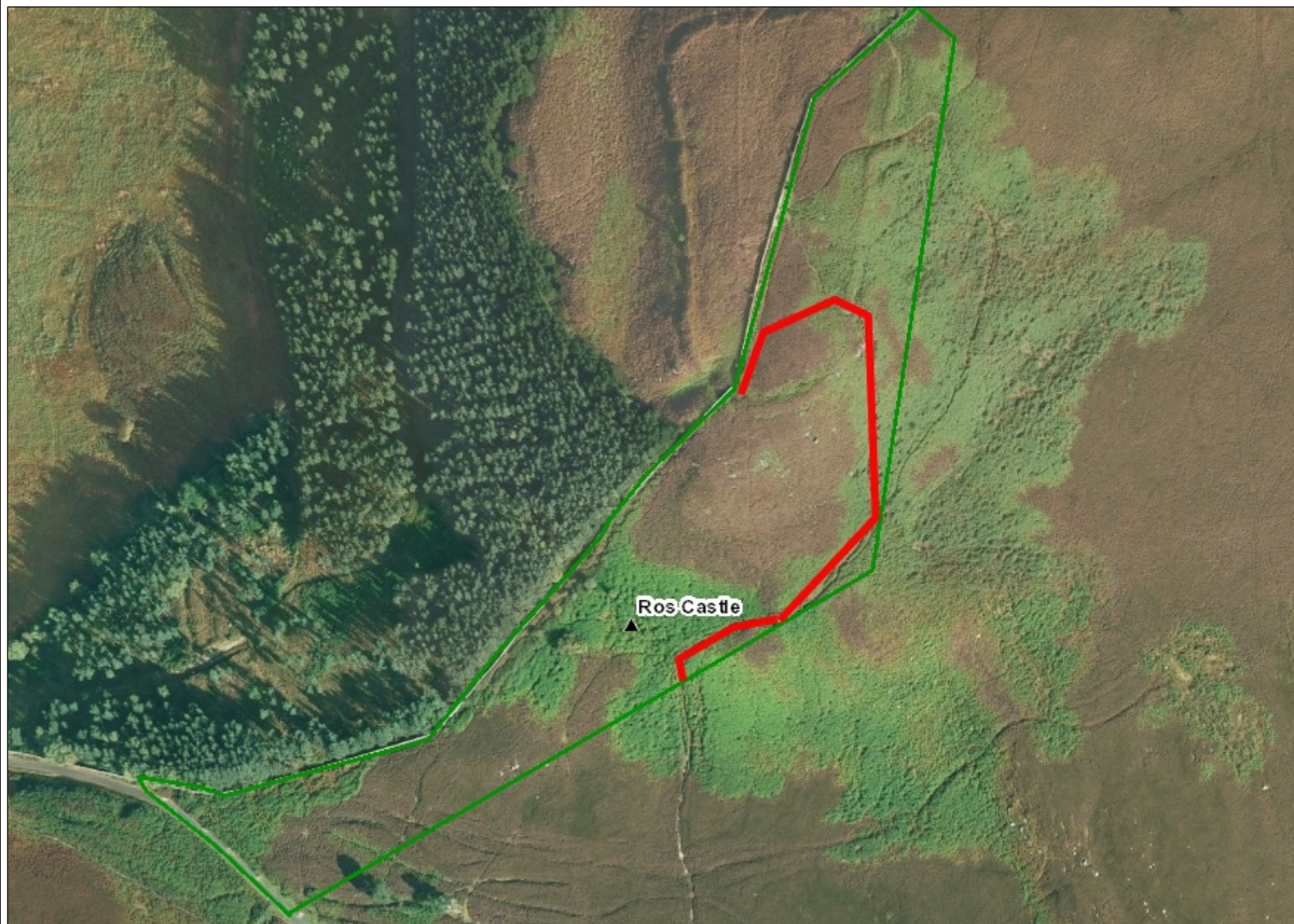
This map is a user generated static output from an Intranet mapping site and is for reference only. Data layers that appear on this map may or may not be accurate, current, or otherwise reliable.

THIS MAP IS NOT TO BE USED FOR NAVIGATION

Notes
This map was automatically generated using the National Trust GIS Browser



Ros Castle access



Legend

- ▲ Definitive Properties (GB)
- NT Ownership (GB)
- NT Leasehold (GB)

1: 2,500



0.1 0 0.05 0.1 Kilometers

British_National_Grid

© Crown copyright and database rights 2016 Ordnance Survey 100023974

This map is a user generated static output from an Intranet mapping site and is for reference only. Data layers that appear on this map may or may not be accurate, current, or otherwise reliable.

THIS MAP IS NOT TO BE USED FOR NAVIGATION

Notes

This map was automatically generated using the National Trust GIS Browser



Seahouses Access Map



Legend

- ▲ Definitive Properties (GB)
- NT Ownership (GB)
- NT Leasehold (GB)

1: 9,000



0.4 0 0.18 0.4 Kilometers

British_National_Grid

© Crown copyright and database rights 2016 Ordnance Survey 100023974

This map is a user generated static output from an Intranet mapping site and is for reference only. Data layers that appear on this map may or may not be accurate, current, or otherwise reliable.

THIS MAP IS NOT TO BE USED FOR NAVIGATION

Notes

This map was automatically generated using the National Trust GIS Browser



St Cuthberts Access Map



Legend

- ▲ Definitive Properties (GB)
- NT Ownership (GB)
- NT Leasehold (GB)

1: 2,000



0.1 0 0.04 0.1 Kilometers

British_National_Grid

© Crown copyright and database rights 2016 Ordnance Survey 100023974

This map is a user generated static output from an Intranet mapping site and is for reference only. Data layers that appear on this map may or may not be accurate, current, or otherwise reliable.

THIS MAP IS NOT TO BE USED FOR NAVIGATION

Notes

This map was automatically generated using the National Trust GIS Browser



Beadnell Bay Access Map



Legend

1: 5,000



0.2 0 0.10 0.2 Kilometers

British_National_Grid
© Crown copyright and database rights 2018 Ordnance Survey 100023974

This map is a user generated static output from an Intranet mapping site and is for reference only. Data layers that appear on this map may or may not be accurate, current, or otherwise reliable.

THIS MAP IS NOT TO BE USED FOR NAVIGATION

Notes

This map was automatically generated using the National Trust GIS Browser

Map Legend:

-  Desire line
-  Public footpath
-  Bridleway
-  Paved track